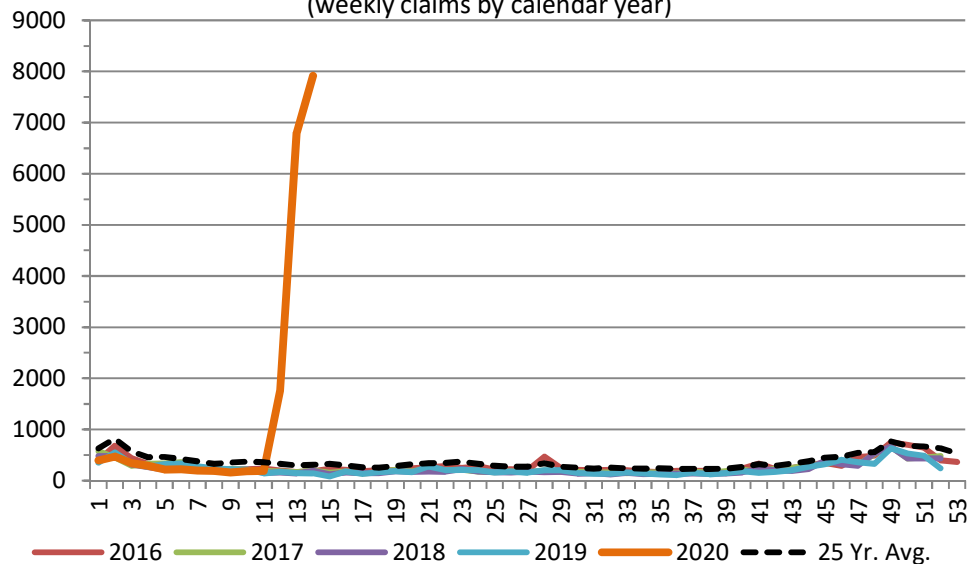
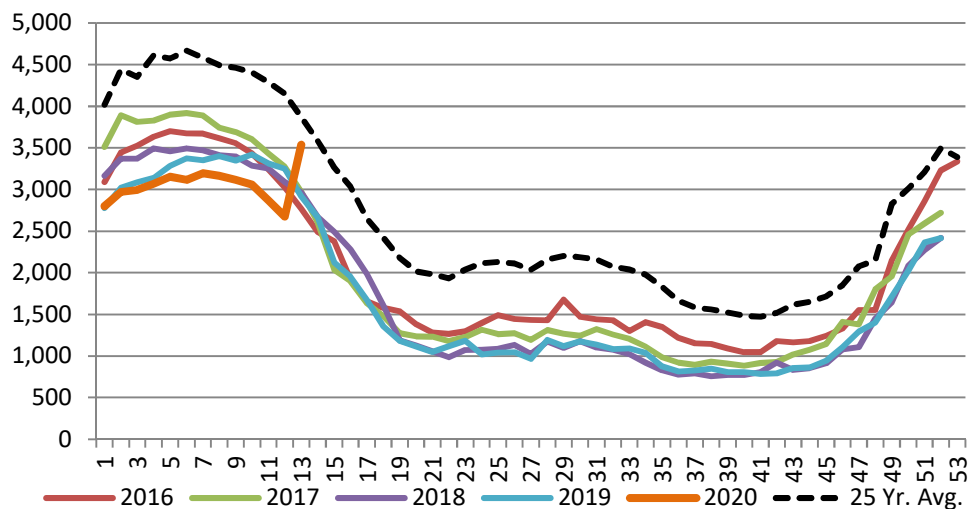


### SD Initial Claims for Reemployment Assistance

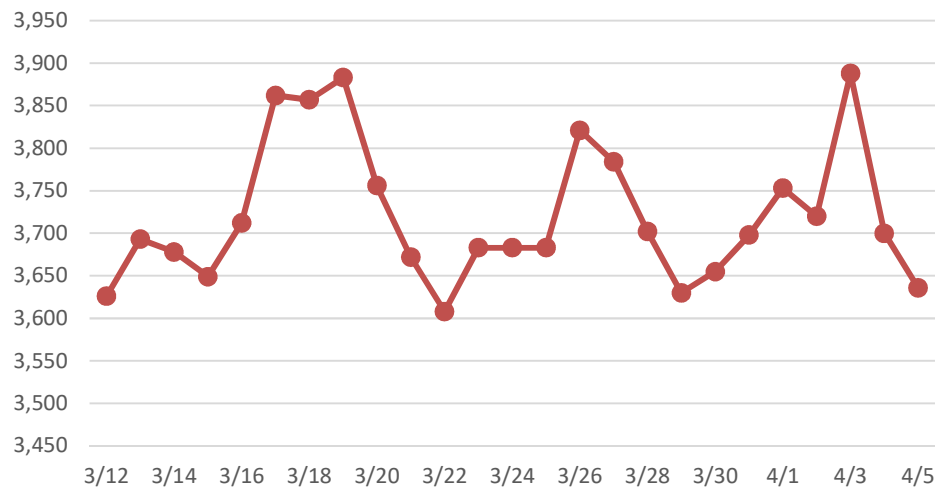
(weekly claims by calendar year)



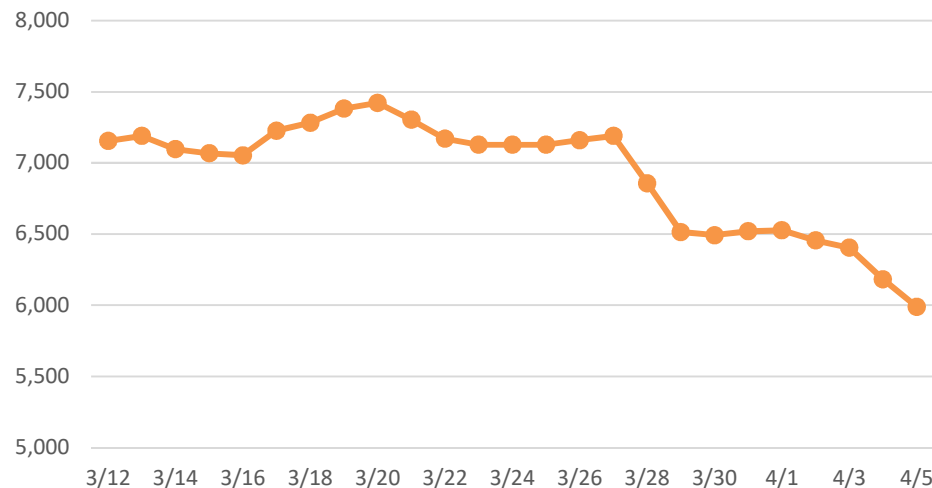
### SD Continuing Claims for Reemployment Assistance



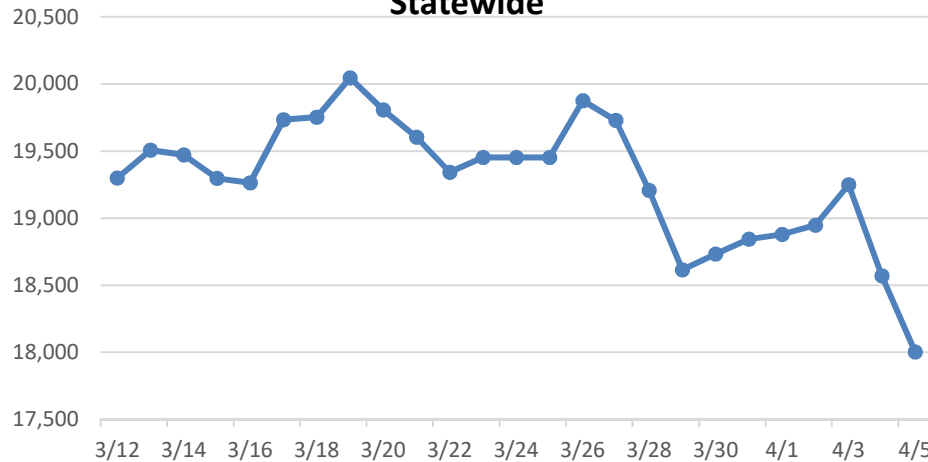
### Job Openings Advertised Online Rapid City MSA



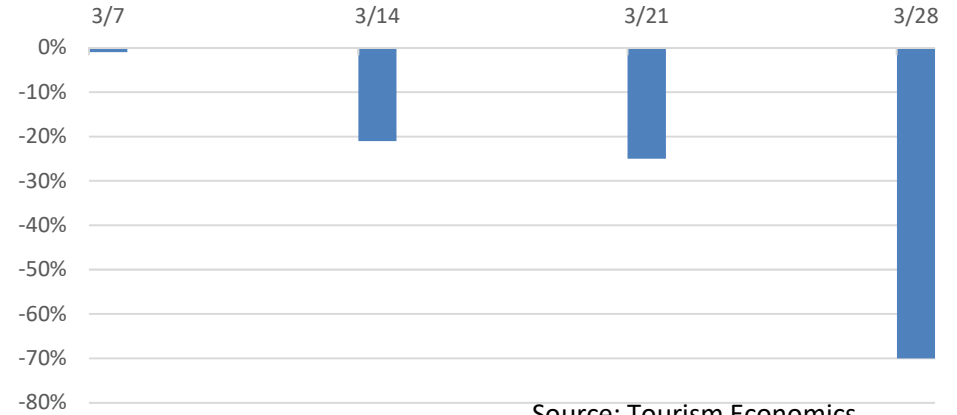
### Job Openings Advertised Online Sioux Falls MSA



**Job Openings Advertised Online  
Statewide**

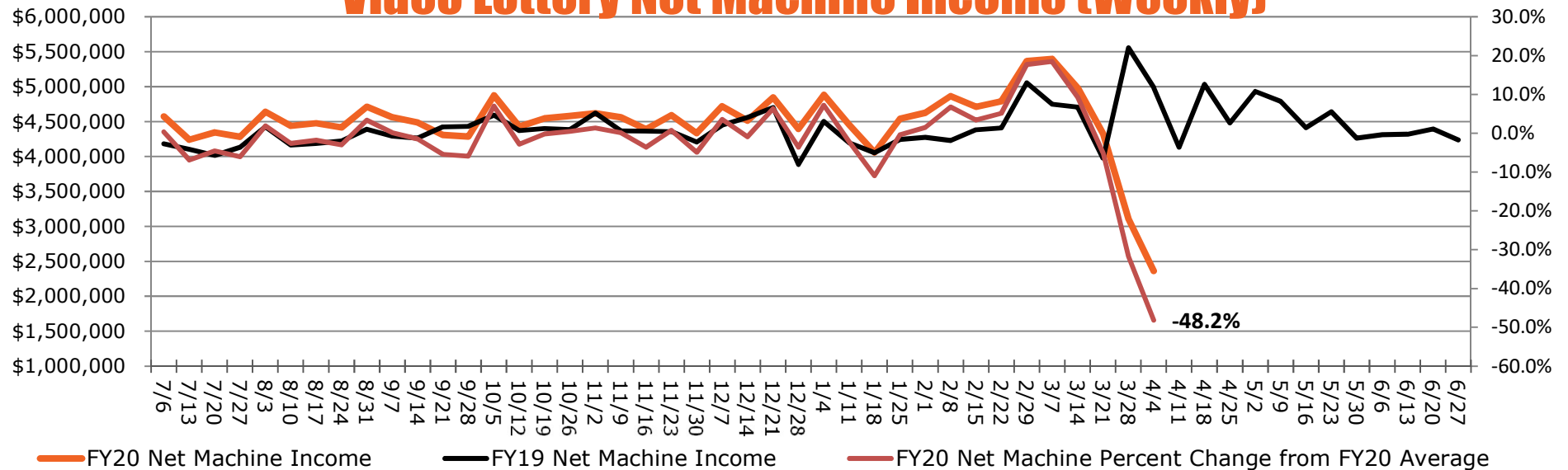


**Weekly Estimated Travel Spending in South  
Dakota: Year over Year Percent Change**



Source: Tourism Economics

**Video Lottery Net Machine Income (Weekly)**



\* Machine Income (NMI) is defined as Cash In minus Prize Paid Out. NMI is split, Machine Owner (Operator) receives 50%, General Fund receives 49.5% and 0.5% goes to the Video Lottery Operating Fund.