

**Actual Revenue FY2020 vs. Actual Revenue FY2021
FEBRUARY FY2021 Comparison**

	Actual FEBRUARY FY2020	Actual FEBRUARY FY2021	DOLLAR CHANGE	PERCENT CHANGE
ONGOING RECEIPTS				
Net Sales and Use Tax (excl. cost of admin)	81,111,229	88,113,274	7,002,045	8.6%
Lottery	5,077,902	12,287,157	7,209,256	142.0%
Net Contractor's Excise Tax	8,343,131	8,577,278	234,147	2.8%
Insurance Company Tax	11,534,347	11,186,235	(348,112)	-3.0%
Unclaimed Property Receipts	(2,327,486)	(1,262,796)	1,064,690	N/A
Licenses, Permits, and Fees	865,638	1,001,629	135,991	15.7%
Tobacco Taxes	1,627,206	2,277,157	649,952	39.9%
Trust Funds	0	0	0	N/A
Net Transfers In (excluding one-time)	279,746	930,792	651,046	232.7%
Alcohol Beverage Tax	7,913	4,683	(3,230)	-40.8%
Bank Franchise Tax	670,762	244,565	(426,196)	-63.5%
Charges for Goods and Services	1,182,797	1,005,594	(177,204)	-15.0%
Telecommunications Tax	1,768,699	267,448	(1,501,251)	-84.9%
Severance Taxes	184,833	193,288	8,454	N/A
Investment Income and Interest	5,050	2,868	(2,182)	N/A
Alcohol Beverage 2% Wholesale Tax	201,838	224,705	22,867	11.3%
SUBTOTAL (ONGOING RECEIPTS)	\$ 110,533,602	\$ 125,053,876	\$ 14,520,274	13.1%
ONE-TIME RECEIPTS				
SUBTOTAL (ONE-TIME RECEIPTS)	\$ 0	\$ 0	\$ 0	N/A
GRAND TOTAL	\$ 110,533,602	\$ 125,053,876	\$ 14,520,274	13.1%

NOTES:

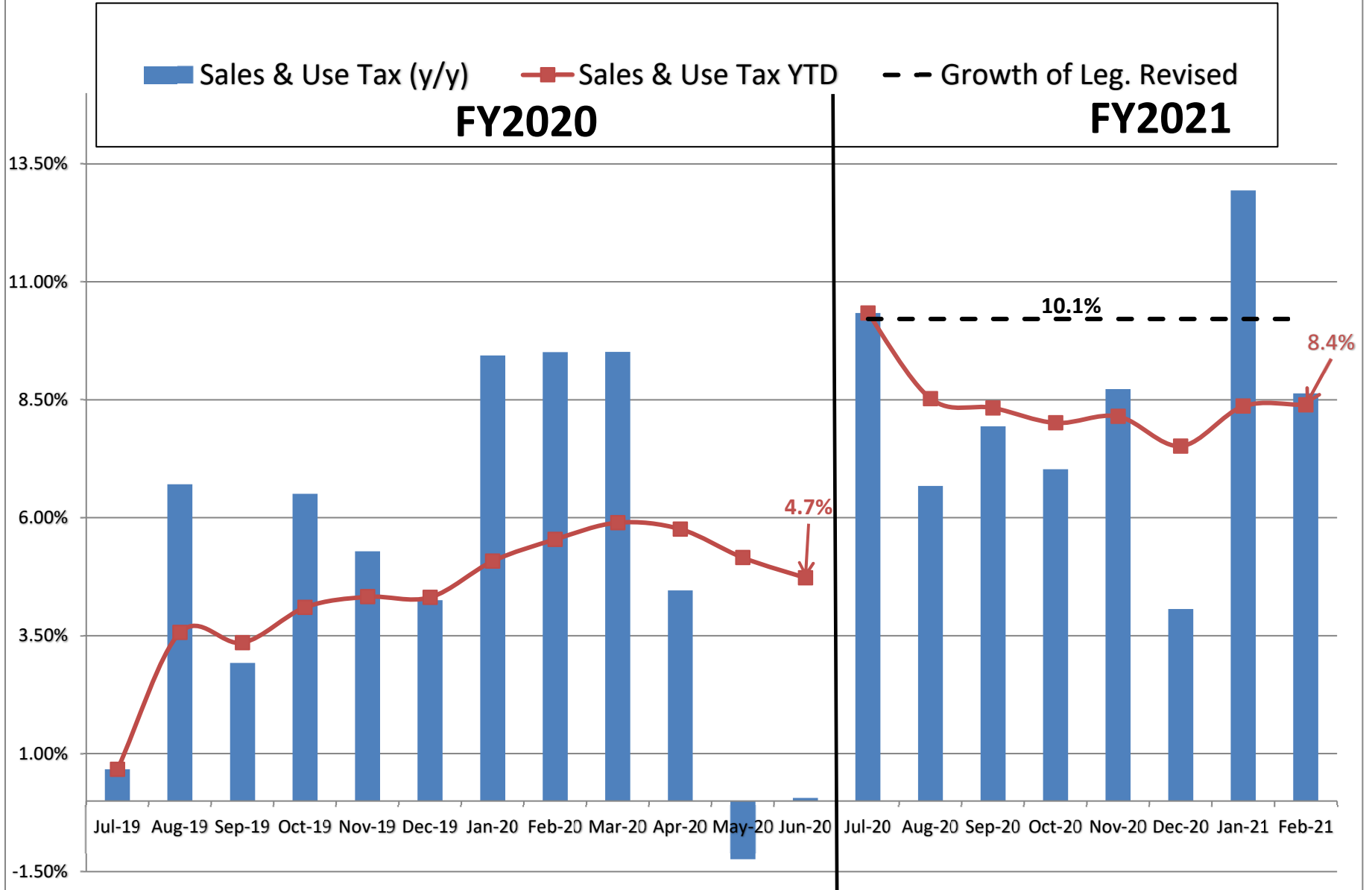
**Actual Revenue FY2020 vs. Actual Revenue FY2021
Year-To-Date Through FEBRUARY FY2021 Comparison**

	Actual YTD FY2020	Actual YTD FY2021	DOLLAR CHANGE	YTD GROWTH OVER FY2020
ONGOING RECEIPTS				
Net Sales and Use Tax (excl. cost of admin)	751,282,429	814,342,464	63,060,034	8.4%
Lottery	73,189,012	92,039,537	18,850,525	25.8%
Net Contractor's Excise Tax	94,035,894	106,562,370	12,526,475	13.3%
Insurance Company Tax	64,751,993	70,731,968	5,979,975	9.2%
Unclaimed Property Receipts	48,939,238	66,847,960	17,908,723	36.6%
Licenses, Permits, and Fees	39,227,009	40,389,040	1,162,031	3.0%
Tobacco Taxes	31,627,206	32,275,025	647,819	2.0%
Trust Funds	26,854,666	28,223,883	1,369,217	5.1%
Net Transfers In (excluding one-time)	13,720,856	14,881,723	1,160,866	8.5%
Alcohol Beverage Tax	4,278,126	4,782,651	504,525	11.8%
Bank Franchise Tax	3,887,843	3,680,397	(207,446)	-5.3%
Charges for Goods and Services	10,607,530	10,356,766	(250,763)	-2.4%
Telecommunications Tax	4,053,475	2,286,152	(1,767,323)	-43.6%
Severance Taxes	4,984,390	8,424,991	3,440,601	69.0%
Investment Income and Interest	10,894,424	18,380,743	7,486,320	68.7%
Alcohol Beverage 2% Wholesale Tax	1,648,684	1,880,229	231,545	14.0%
SUBTOTAL (ONGOING RECEIPTS)	\$ 1,183,982,774	\$ 1,316,085,898	\$ 132,103,124	11.2%
ONE-TIME RECEIPTS				
¹ Closeout of SDRC Inc. Funds	0	3,381,726	3,381,726	N/A
² Refinancing Gains	7,082,539	6,745,654	(336,885)	-4.8%
³ One-Time Sales and Use Tax	0	13,486,289	13,486,289	N/A
⁴ Bank Franchise Tax Prior Year Revenue	0	9,720,271	9,720,271	N/A
SUBTOTAL (ONE-TIME RECEIPTS)	\$ 7,082,539	\$ 33,333,940	\$ 26,251,401	370.6%
GRAND TOTAL	\$ 1,191,065,313	\$ 1,349,419,838	\$ 158,354,524	13.3%

NOTES:

- ¹ Per the SDRC Inc. contract.
- ² Refinancing Gains are related to savings generated by the refinancing of various bonds at the Board of Regents and Game, Fish, and Parks.
- ³ One-time Sales and Use Tax is due to one-time collections related to the reinvestment program.
- ⁴ Bank Franchise Tax Prior Year Revenue includes revenue related to the federal income tax filing extension and audits.

Recent Growth Rates in State Sales and Use Tax



**Legislative Revised FY2021 Estimate (Feb. 2021) vs. Actual Revenues
FEBRUARY FY2021 Comparison**

	Leg Revised FEBRUARY FY2021	Actual FEBRUARY FY2021	DOLLAR CHANGE	MTD % Chg. Actual/Adopt Comparison
ONGOING RECEIPTS				
Net Sales and Use Tax (excl. cost of admin)	85,655,210	88,113,274	2,458,064	2.9%
Lottery	10,126,013	12,287,157	2,161,145	21.3%
Net Contractor's Excise Tax	9,264,083	8,577,278	(686,805)	-7.4%
Insurance Company Tax	8,457,383	11,186,235	2,728,852	32.3%
Unclaimed Property Receipts	(2,902,403)	(1,262,796)	1,639,607	N/A
Licenses, Permits, and Fees	878,379	1,001,629	123,250	14.0%
Tobacco Taxes	2,738,711	2,277,157	(461,554)	-16.9%
Trust Funds	0	0	0	N/A
Net Transfers In (excluding one-time)	294,342	930,792	636,449	216.2%
Alcohol Beverage Tax	4,737	4,683	(54)	-1.1%
Bank Franchise Tax	437,500	244,565	(192,934)	-44.1%
Charges for Goods and Services	1,301,484	1,005,594	(295,890)	-22.7%
Telecommunications Tax	459,951	267,448	(192,503)	-41.9%
Severance Taxes	286,790	193,288	(93,503)	-32.6%
Investment Income and Interest	6,805	2,868	(3,937)	-57.9%
Alcohol Beverage 2% Wholesale Tax	245,665	224,705	(20,960)	-8.5%
SUBTOTAL (ONGOING RECEIPTS)	\$ 117,254,648	\$ 125,053,876	\$ 7,799,228	6.7%
ONE-TIME RECEIPTS				
SUBTOTAL (ONE-TIME RECEIPTS)	\$ 0	\$ 0	\$ 0	N/A
GRAND TOTAL	\$ 117,254,648	\$ 125,053,876	\$ 7,799,228	6.7%

NOTES

**Legislative Adopted FY2021 Estimate (Feb. 2020) vs. Actual
Revenues Year-to-Date Through FEBRUARY FY2021 Comparison**

	Leg. Adopted YTD FY2021	Actual YTD FY2021	DOLLAR CHANGE	YTD % Chg. Actual/Adopt Comparison
ONGOING RECEIPTS				
Net Sales and Use Tax (excl. cost of admin)	811,884,399	814,342,464	2,458,064	0.3%
Lottery	89,878,392	92,039,537	2,161,145	2.4%
Net Contractor's Excise Tax	107,249,175	106,562,370	(686,805)	-0.6%
Insurance Company Tax	68,003,116	70,731,968	2,728,852	4.0%
Unclaimed Property Receipts	65,208,353	66,847,960	1,639,607	2.5%
Licenses, Permits, and Fees	40,265,790	40,389,040	123,250	0.3%
Tobacco Taxes	32,736,579	32,275,025	(461,554)	-1.4%
Trust Funds	28,223,883	28,223,883	0	0.0%
Net Transfers In (excluding one-time)	14,245,273	14,881,723	636,449	4.5%
Alcohol Beverage Tax	4,782,705	4,782,651	(54)	0.0%
Bank Franchise Tax	3,873,331	3,680,397	(192,934)	-5.0%
Charges for Goods and Services	10,652,657	10,356,766	(295,890)	-2.8%
Telecommunications Tax	2,478,655	2,286,152	(192,503)	-7.8%
Severance Taxes	8,518,493	8,424,991	(93,503)	-1.1%
Investment Income and Interest	18,384,680	18,380,743	(3,937)	0.0%
Alcohol Beverage 2% Wholesale Tax	1,901,189	1,880,229	(20,960)	-1.1%
SUBTOTAL (ONGOING RECEIPTS)	\$ 1,308,286,670	\$ 1,316,085,898	\$ 7,799,228	0.6%
ONE-TIME RECEIPTS				
¹ Closeout of SDRC Inc. Funds	3,381,726	3,381,726	0	0.0%
² Refinancing Gains	6,745,654	6,745,654	0	0.0%
³ One-Time Sales and Use Tax	13,486,289	13,486,289	0	0.0%
⁴ Bank Franchise Tax Prior Year Revenue	9,720,271	9,720,271	0	0.0%
SUBTOTAL (ONE-TIME RECEIPTS)	\$ 33,333,940	\$ 33,333,940	\$ 0	0.0%
GRAND TOTAL	\$ 1,341,620,610	\$ 1,349,419,838	\$ 7,799,228	0.6%

NOTES

¹ Per the SDRC Inc. contract.

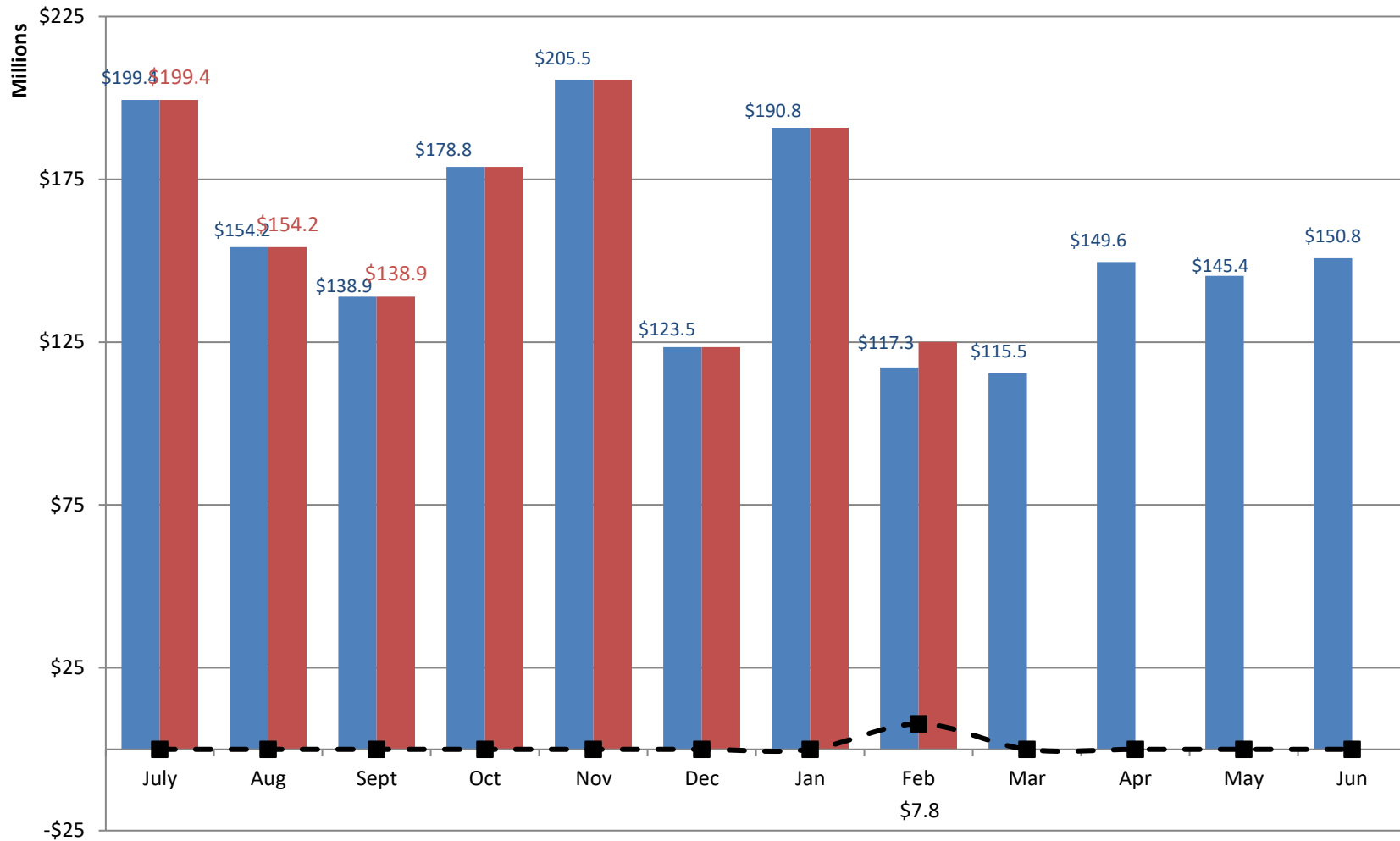
² Refinancing Gains are related to savings generated by the refinancing of various bonds at the Board of Regents and Game, Fish, and Parks.

³ One-time Sales and Use Tax is due to one-time collections related to the reinvestment program.

⁴ Bank Franchise Tax Prior Year Revenue includes revenue related to the federal income tax filing extension and audits.

Adopted FY2021 vs. Actual FY2021 Ongoing Receipts

■ Adopted FY2021 Receipts
 ■ Actual FY2021 Receipts
 -■- Actual vs. Adopted



Through 8 months, total actual ongoing receipts were \$7.8 million MORE than the Revised Adopted FY2021 estimate.