

**Actual Revenue FY2020 vs. Actual Revenue FY2021
MARCH FY2021 Comparison**

	Actual MARCH FY2020	Actual MARCH FY2021	DOLLAR CHANGE	PERCENT CHANGE
ONGOING RECEIPTS				
Net Sales and Use Tax (excl. cost of admin)	76,278,507	88,832,069	12,553,562	16.5%
Lottery*	15,561,542	12,408,555	(3,152,987)	-20.3%
Net Contractor's Excise Tax	6,315,302	7,457,499	1,142,196	18.1%
Insurance Company Tax	8,610,580	5,516,706	(3,093,874)	-35.9%
Unclaimed Property Receipts	0	(1,955,659)	(1,955,659)	N/A
Licenses, Permits, and Fees	927,360	1,107,704	180,344	19.4%
Tobacco Taxes	5,214,946	4,700,224	(514,721)	-9.9%
Trust Funds	0	0	0	N/A
Net Transfers In (excluding one-time)	579,240	683,102	103,862	17.9%
Alcohol Beverage Tax	6,909	9,469	2,561	37.1%
Bank Franchise Tax	2,844,779	4,593,905	1,749,126	61.5%
Charges for Goods and Services	939,966	884,453	(55,513)	-5.9%
Telecommunications Tax	381,591	240,951	(140,640)	-36.9%
Severance Taxes	0	0	0	N/A
Investment Income and Interest	9,828	16,849	7,021	71.4%
Alcohol Beverage 2% Wholesale Tax	138,349	123,042	(15,306)	-11.1%
SUBTOTAL (ONGOING RECEIPTS)	\$ 117,808,898	\$ 124,618,870	\$ 6,809,972	5.8%
ONE-TIME RECEIPTS				
SUBTOTAL (ONE-TIME RECEIPTS)	\$ 0	\$ 0	\$ 0	N/A
GRAND TOTAL	\$ 117,808,898	\$ 124,618,870	\$ 6,809,972	5.8%

NOTES:

* March 2020 Lottery receipts included \$5.1M which would normally have been included in February, due to timing of receipts.

**Actual Revenue FY2020 vs. Actual Revenue FY2021
Year-To-Date Through MARCH FY2021 Comparison**

	Actual YTD FY2020	Actual YTD FY2021	DOLLAR CHANGE	YTD GROWTH OVER FY2020
ONGOING RECEIPTS				
Net Sales and Use Tax (excl. cost of admin)	827,560,937	903,174,533	75,613,596	9.1%
Lottery	88,750,554	104,448,087	15,697,533	17.7%
Net Contractor's Excise Tax	100,351,197	114,019,868	13,668,672	13.6%
Insurance Company Tax	73,362,573	76,248,674	2,886,101	3.9%
Unclaimed Property Receipts	48,939,238	64,892,302	15,953,064	32.6%
Licenses, Permits, and Fees	40,154,369	41,496,744	1,342,375	3.3%
Tobacco Taxes	36,842,151	36,975,249	133,098	0.4%
Trust Funds	26,854,666	28,223,883	1,369,217	5.1%
Net Transfers In (excluding one-time)	14,300,097	15,564,825	1,264,728	8.8%
Alcohol Beverage Tax	4,285,035	4,792,121	507,086	11.8%
Bank Franchise Tax	6,732,621	8,274,301	1,541,680	22.9%
Charges for Goods and Services	11,547,496	11,241,220	(306,276)	-2.7%
Telecommunications Tax	4,435,066	2,527,103	(1,907,963)	-43.0%
Severance Taxes	4,984,390	8,424,991	3,440,601	69.0%
Investment Income and Interest	10,904,251	18,397,592	7,493,340	68.7%
Alcohol Beverage 2% Wholesale Tax	1,787,033	2,003,271	216,238	12.1%
SUBTOTAL (ONGOING RECEIPTS)	\$ 1,301,791,672	\$ 1,440,704,762	\$ 138,913,090	10.7%
ONE-TIME RECEIPTS				
¹ Closeout of SDRC Inc. Funds	0	3,381,726	3,381,726	N/A
² Refinancing Gains	7,082,539	6,745,654	(336,885)	-4.8%
³ One-Time Sales and Use Tax	0	13,486,289	13,486,289	N/A
⁴ Bank Franchise Tax Prior Year Revenue	0	9,720,271	9,720,271	N/A
SUBTOTAL (ONE-TIME RECEIPTS)	\$ 7,082,539	\$ 33,333,940	\$ 26,251,401	370.6%
GRAND TOTAL	\$ 1,308,874,211	\$ 1,474,038,702	\$ 165,164,491	12.6%

NOTES:

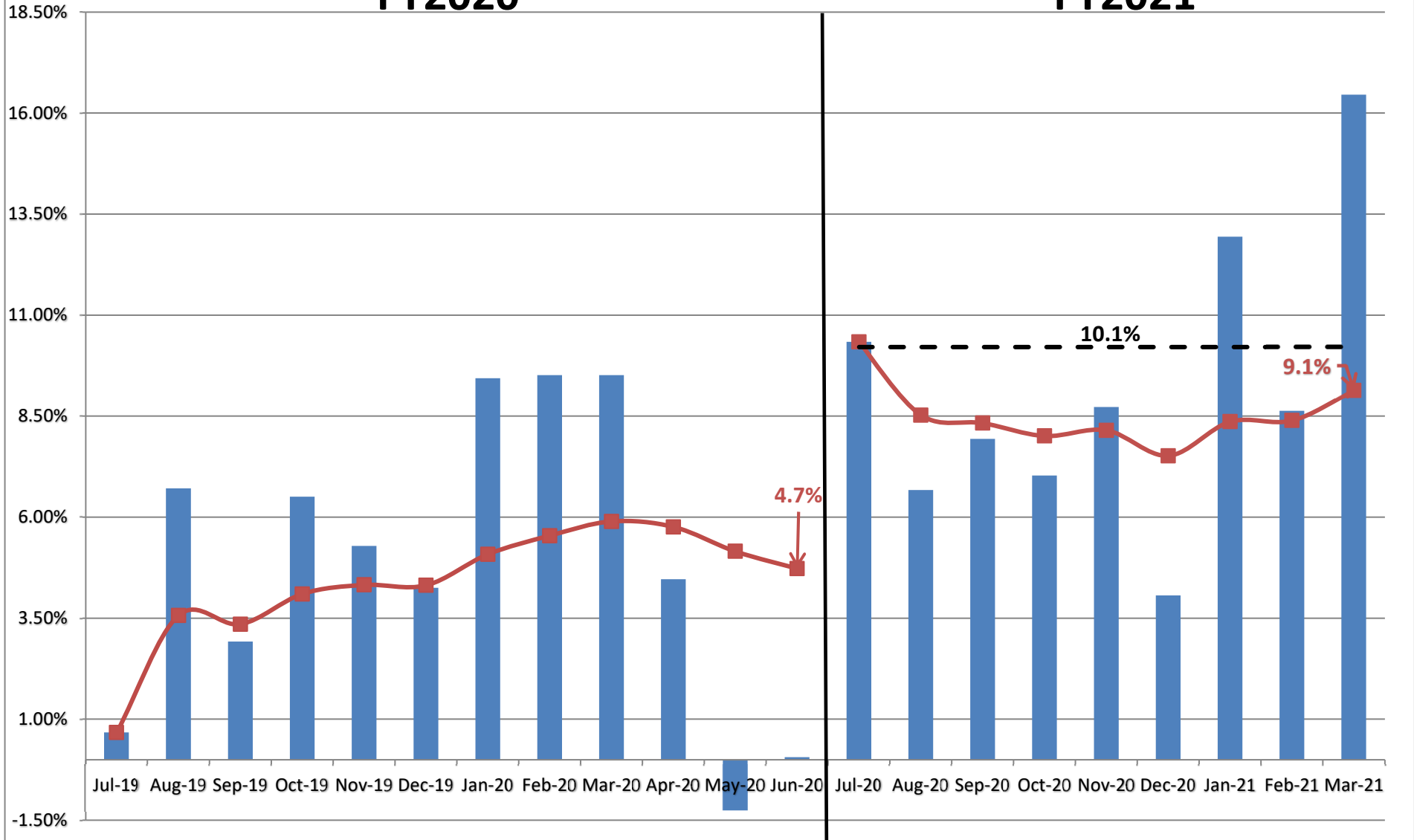
- ¹ Per the SDRC Inc. contract.
- ² Refinancing Gains are related to savings generated by the refinancing of various bonds at the Board of Regents and Game, Fish, and Parks.
- ³ One-time Sales and Use Tax is due to one-time collections related to the reinvestment program.
- ⁴ Bank Franchise Tax Prior Year Revenue includes revenue related to the federal income tax filing extension and audits.

Recent Growth Rates in State Sales and Use Tax



FY2020

FY2021



**Legislative Revised FY2021 Estimate (Feb. 2021) vs. Actual Revenues
MARCH FY2021 Comparison**

	Leg Revised MARCH FY2021	Actual MARCH FY2021	DOLLAR CHANGE	MTD % Chg. Actual/Adopt Comparison
ONGOING RECEIPTS				
Net Sales and Use Tax (excl. cost of admin)	80,955,585	88,832,069	7,876,485	9.7%
Lottery	11,638,716	12,408,555	769,840	6.6%
Net Contractor's Excise Tax	7,700,636	7,457,499	(243,138)	-3.2%
Insurance Company Tax	7,393,446	5,516,706	(1,876,740)	-25.4%
Unclaimed Property Receipts	(2,569,556)	(1,955,659)	613,897	N/A
Licenses, Permits, and Fees	1,020,347	1,107,704	87,357	8.6%
Tobacco Taxes	4,803,797	4,700,224	(103,573)	-2.2%
Trust Funds	0	0	0	N/A
Net Transfers In (excluding one-time)	521,183	683,102	161,919	31.1%
Alcohol Beverage Tax	3,850	9,469	5,619	146.0%
Bank Franchise Tax	2,282,117	4,593,905	2,311,788	101.3%
Charges for Goods and Services	1,077,935	884,453	(193,482)	-17.9%
Telecommunications Tax	441,322	240,951	(200,371)	-45.4%
Severance Taxes	76,045	0	(76,045)	-100.0%
Investment Income and Interest	11,043	16,849	5,805	52.6%
Alcohol Beverage 2% Wholesale Tax	137,581	123,042	(14,539)	-10.6%
SUBTOTAL (ONGOING RECEIPTS)	\$ 115,494,047	\$ 124,618,870	\$ 9,124,823	7.9%
ONE-TIME RECEIPTS				
SUBTOTAL (ONE-TIME RECEIPTS)	\$ 0	\$ 0	\$ 0	N/A
GRAND TOTAL	\$ 115,494,047	\$ 124,618,870	\$ 9,124,823	7.9%

NOTES

**Legislative Adopted FY2021 Estimate (Feb. 2021) vs. Actual Revenues
Year-to-Date Through MARCH FY2021 Comparison**

	Leg. Adopted YTD FY2021	Actual YTD FY2021	DOLLAR CHANGE	YTD % Chg. Actual/Adopt Comparison
ONGOING RECEIPTS				
Net Sales and Use Tax (excl. cost of admin)	892,839,984	903,174,533	10,334,549	1.2%
Lottery	101,517,108	104,448,087	2,930,979	2.9%
Net Contractor's Excise Tax	114,949,811	114,019,868	(929,943)	-0.8%
Insurance Company Tax	75,396,562	76,248,674	852,112	1.1%
Unclaimed Property Receipts	62,638,797	64,892,302	2,253,505	3.6%
Licenses, Permits, and Fees	41,286,137	41,496,744	210,607	0.5%
Tobacco Taxes	37,540,376	36,975,249	(565,127)	-1.5%
Trust Funds	28,223,883	28,223,883	0	0.0%
Net Transfers In (excluding one-time)	14,766,457	15,564,825	798,368	5.4%
Alcohol Beverage Tax	4,786,555	4,792,121	5,565	0.1%
Bank Franchise Tax	6,155,448	8,274,301	2,118,854	34.4%
Charges for Goods and Services	11,730,592	11,241,220	(489,372)	-4.2%
Telecommunications Tax	2,919,977	2,527,103	(392,874)	-13.5%
Severance Taxes	8,594,538	8,424,991	(169,547)	-2.0%
Investment Income and Interest	18,395,723	18,397,592	1,868	0.0%
Alcohol Beverage 2% Wholesale Tax	2,038,770	2,003,271	(35,499)	-1.7%
SUBTOTAL (ONGOING RECEIPTS)	\$ 1,423,780,717	\$ 1,440,704,762	\$ 16,924,046	1.2%
ONE-TIME RECEIPTS				
¹ Closeout of SDRC Inc. Funds	3,381,726	3,381,726	0	0.0%
² Refinancing Gains	6,745,654	6,745,654	0	0.0%
³ One-Time Sales and Use Tax	13,486,289	13,486,289	0	0.0%
⁴ Bank Franchise Tax Prior Year Revenue	9,720,271	9,720,271	0	0.0%
SUBTOTAL (ONE-TIME RECEIPTS)	\$ 33,333,940	\$ 33,333,940	\$ 0	0.0%
GRAND TOTAL	\$ 1,457,114,657	\$ 1,474,038,702	\$ 16,924,046	1.2%

NOTES

¹ Per the SDRC Inc. contract.

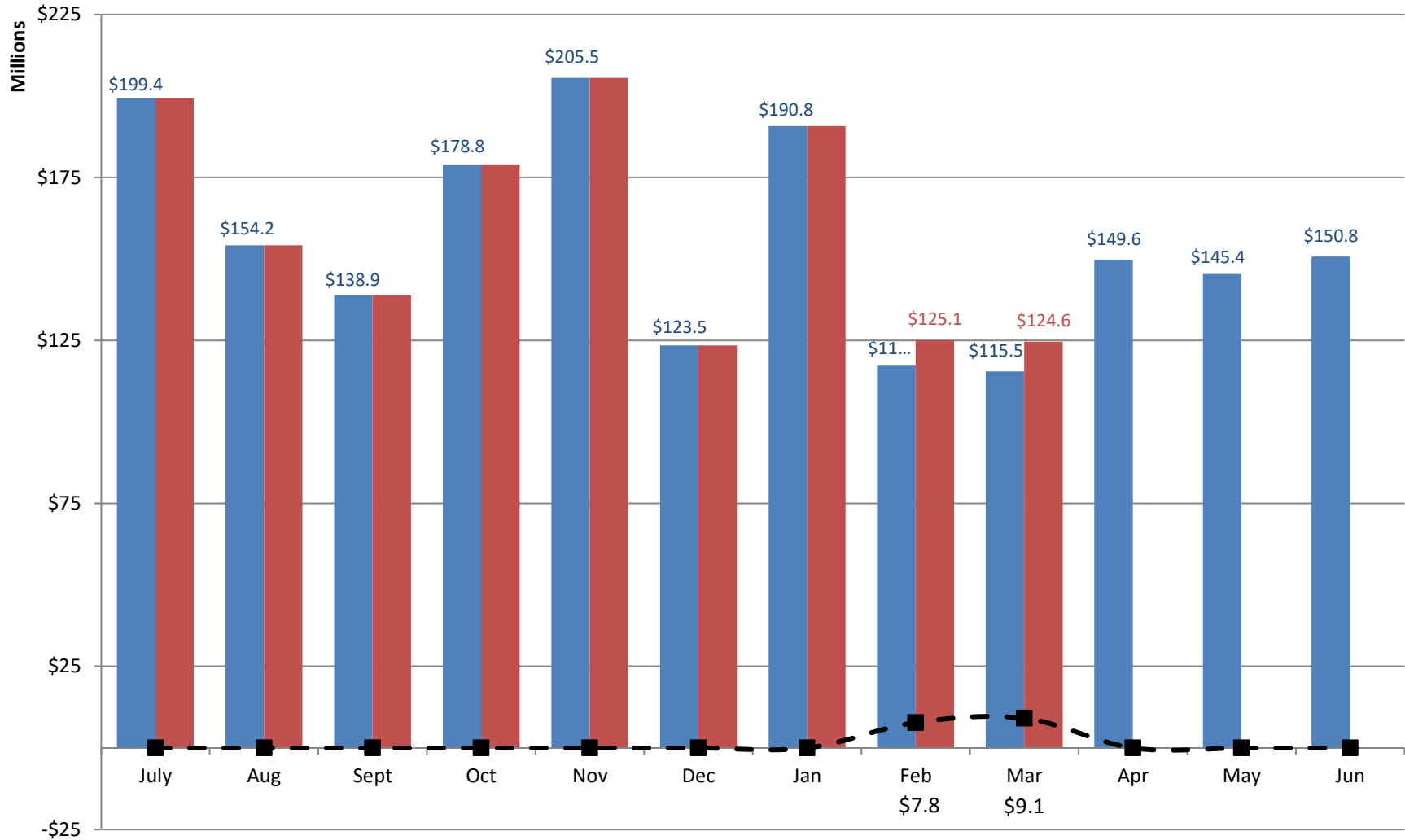
² Refinancing Gains are related to savings generated by the refinancing of various bonds at the Board of Regents and Game, Fish, and Parks.

³ One-time Sales and Use Tax is due to one-time collections related to the reinvestment program.

⁴ Bank Franchise Tax Prior Year Revenue includes revenue related to the federal income tax filing extension and audits.

Adopted FY2021 vs. Actual FY2021 Ongoing Receipts

■ Adopted FY2021 Receipts
 ■ Actual FY2021 Receipts
 -■- Actual vs. Adopted



Through 9 months, total actual ongoing receipts were \$16.9 million MORE than the Revised Adopted FY2021 estimate.