

**Actual Revenue FY2020 vs. Actual Revenue FY2021  
APRIL FY2021 Comparison**

	<b>Actual APRIL FY2020</b>	<b>Actual APRIL FY2021</b>	<b>DOLLAR CHANGE</b>	<b>PERCENT CHANGE</b>
<b>ONGOING RECEIPTS</b>				
Net Sales and Use Tax (excl. cost of admin)	85,439,170	106,903,136	21,463,966	25.1%
Lottery	6,184,090	8,948,929	2,764,839	44.7%
Net Contractor's Excise Tax	7,685,644	10,044,140	2,358,496	30.7%
Insurance Company Tax	16,766,878	16,169,782	(597,096)	-3.6%
Unclaimed Property Receipts	(1,902,313)	(1,447,939)	454,373	-23.9%
<sup>1</sup> Licenses, Permits, and Fees	722,324	10,151,539	9,429,216	1305.4%
Tobacco Taxes	4,631,907	5,067,193	435,286	9.4%
Trust Funds	0	0	0	N/A
Net Transfers In (excluding one-time)	380,410	2,388,811	2,008,402	528.0%
Alcohol Beverage Tax	1,912,959	1,976,907	63,948	3.3%
<sup>2</sup> Bank Franchise Tax	2,642,927	9,128,505	6,485,578	245.4%
Charges for Goods and Services	1,219,160	1,572,731	353,570	29.0%
Telecommunications Tax	359,212	229,709	(129,503)	-36.1%
Severance Taxes	756,812	1,111,430	354,618	46.9%
Investment Income and Interest	1,358	4,824	3,466	255.2%
Alcohol Beverage 2% Wholesale Tax	160,234	179,782	19,548	12.2%
<b>SUBTOTAL (ONGOING RECEIPTS)</b>	<b>\$ 126,960,773</b>	<b>\$ 172,429,480</b>	<b>\$ 45,468,707</b>	<b>35.8%</b>
<b>ONE-TIME RECEIPTS</b>				
<b>SUBTOTAL (ONE-TIME RECEIPTS)</b>	<b>\$ 0</b>	<b>\$ 0</b>	<b>\$ 0</b>	<b>N/A</b>
<b>GRAND TOTAL</b>	<b>\$ 126,960,773</b>	<b>\$ 172,429,480</b>	<b>\$ 45,468,707</b>	<b>35.8%</b>

**NOTES**

<sup>1</sup> Securities fees collected in April 2020 were receipted in May 2020.

<sup>2</sup> Bank Franchise payments were delayed in FY20 due to the federal tax deadline extension.

**Actual Revenue FY2020 vs. Actual Revenue FY2021  
Year-To-Date Through APRIL FY2021 Comparison**

	<b>Actual APRIL FY2020</b>	<b>Actual APRIL FY2021</b>	<b>DOLLAR CHANGE</b>	<b>YTD GROWTH OVER FY2020</b>
<b>ONGOING RECEIPTS</b>				
Net Sales and Use Tax (excl. cost of admin)	913,000,106	1,010,077,669	97,077,562	10.6%
Lottery	94,934,644	113,397,016	18,462,372	19.4%
Net Contractor's Excise Tax	108,036,840	124,064,008	16,027,168	14.8%
Insurance Company Tax	90,129,450	92,418,456	2,289,005	2.5%
Unclaimed Property Receipts	47,036,925	63,444,362	16,407,437	34.9%
Licenses, Permits, and Fees	40,876,692	51,648,283	10,771,591	26.4%
Tobacco Taxes	41,474,059	42,042,443	568,384	1.4%
Trust Funds	26,854,666	28,223,883	1,369,217	5.1%
Net Transfers In (excluding one-time)	14,680,507	17,953,636	3,273,130	22.3%
Alcohol Beverage Tax	6,197,994	6,769,028	571,034	9.2%
Bank Franchise Tax	9,375,549	17,402,580	8,027,031	85.6%
Charges for Goods and Services	12,766,656	12,813,950	47,294	0.4%
Telecommunications Tax	4,794,278	2,756,811	<b>(2,037,467)</b>	-42.5%
Severance Taxes	5,741,202	9,536,421	3,795,218	66.1%
Investment Income and Interest	10,905,609	18,402,416	7,496,806	68.7%
Alcohol Beverage 2% Wholesale Tax	1,947,266	2,183,053	235,786	12.1%
<b>SUBTOTAL (ONGOING RECEIPTS)</b>	<b>\$ 1,428,752,445</b>	<b>\$ 1,613,134,015</b>	<b>\$ 184,381,570</b>	<b>12.9%</b>
<b>ONE-TIME RECEIPTS</b>				
<sup>1</sup> Closeout of SDRC Inc. Funds	0	3,381,726	3,381,726	N/A
<sup>2</sup> Refinancing Gains	7,082,539	6,745,654	<b>(336,885)</b>	-4.8%
<sup>3</sup> One-Time Sales and Use Tax	0	13,486,289	13,486,289	N/A
<sup>4</sup> Bank Franchise Tax Prior Year Revenue	0	10,016,931	10,016,931	N/A
<b>SUBTOTAL (ONE-TIME RECEIPTS)</b>	<b>\$ 7,082,539</b>	<b>\$ 33,630,600</b>	<b>\$ 26,548,061</b>	<b>374.8%</b>
<b>GRAND TOTAL</b>	<b>\$ 1,435,834,984</b>	<b>\$ 1,646,764,615</b>	<b>\$ 210,929,631</b>	<b>14.7%</b>

**NOTES**

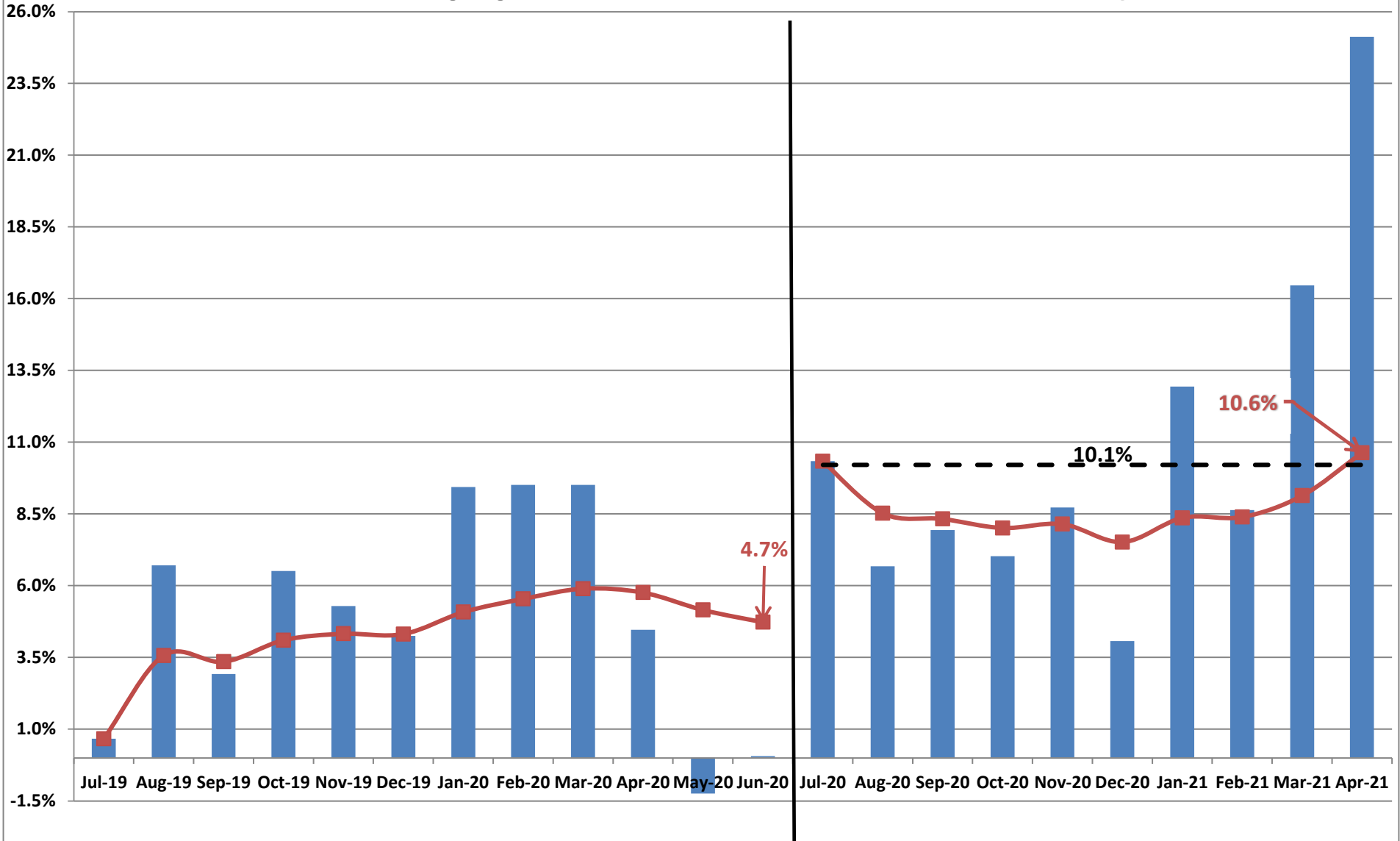
- <sup>1</sup> Per the SDRC Inc. contract.
- <sup>2</sup> Refinancing Gains are related to savings generated by the refinancing of various bonds at the Board of Regents and Game, Fish, and Parks.
- <sup>3</sup> One-time Sales and Use Tax is due to one-time collections related to the reinvestment program.
- <sup>4</sup> Bank Franchise Tax Prior Year Revenue includes revenue related to the federal income tax filing extension and audits.

## Recent Growth Rates in State Sales and Use Tax



### FY2020

### FY2021



**Legislative Revised FY2021 Estimate (Feb. 2021) vs. Actual Revenues  
APRIL FY2021 Comparison**

	<b>Leg Revised APRIL FY2021</b>	<b>Actual APRIL FY2021</b>	<b>DOLLAR CHANGE</b>	<b>MTD % Chg. Actual/Adopt Comparison</b>
<b>ONGOING RECEIPTS</b>				
Net Sales and Use Tax (excl. cost of admin)	91,867,114	106,903,136	15,036,022	16.4%
Lottery	10,846,846	8,948,929	(1,897,917)	-17.5%
Net Contractor's Excise Tax	8,522,341	10,044,140	1,521,799	17.9%
Insurance Company Tax	16,588,411	16,169,782	(418,629)	-2.5%
Unclaimed Property Receipts	(2,243,421)	(1,447,939)	795,482	-35.5%
Licenses, Permits, and Fees	5,616,366	10,151,539	4,535,173	80.7%
Tobacco Taxes	4,649,433	5,067,193	417,760	9.0%
Trust Funds	0	0	0	N/A
Net Transfers In (excluding one-time)	1,971,915	2,388,811	416,896	21.1%
Alcohol Beverage Tax	1,801,719	1,976,907	175,189	9.7%
Bank Franchise Tax	7,768,339	9,128,505	1,360,166	17.5%
Charges for Goods and Services	1,278,853	1,572,731	293,878	23.0%
Telecommunications Tax	441,015	229,709	(211,307)	-47.9%
Severance Taxes	313,615	1,111,430	797,815	254.4%
Investment Income and Interest	4,896	4,824	(72)	-1.5%
Alcohol Beverage 2% Wholesale Tax	138,018	179,782	41,763	30.3%
<b>SUBTOTAL (ONGOING RECEIPTS)</b>	<b>\$ 149,565,461</b>	<b>\$ 172,429,480</b>	<b>\$ 22,864,019</b>	<b>15.3%</b>
<b>ONE-TIME RECEIPTS</b>				
<b>SUBTOTAL (ONE-TIME RECEIPTS)</b>	<b>\$ 0</b>	<b>\$ 0</b>	<b>\$ 0</b>	<b>N/A</b>
<b>GRAND TOTAL</b>	<b>\$ 149,565,461</b>	<b>\$ 172,429,480</b>	<b>\$ 22,864,019</b>	<b>15.3%</b>

**NOTES**

**Legislative Adopted FY2021 Estimate (Feb. 2021) vs. Actual Revenues  
Year-to-Date Through APRIL FY2021 Comparison**

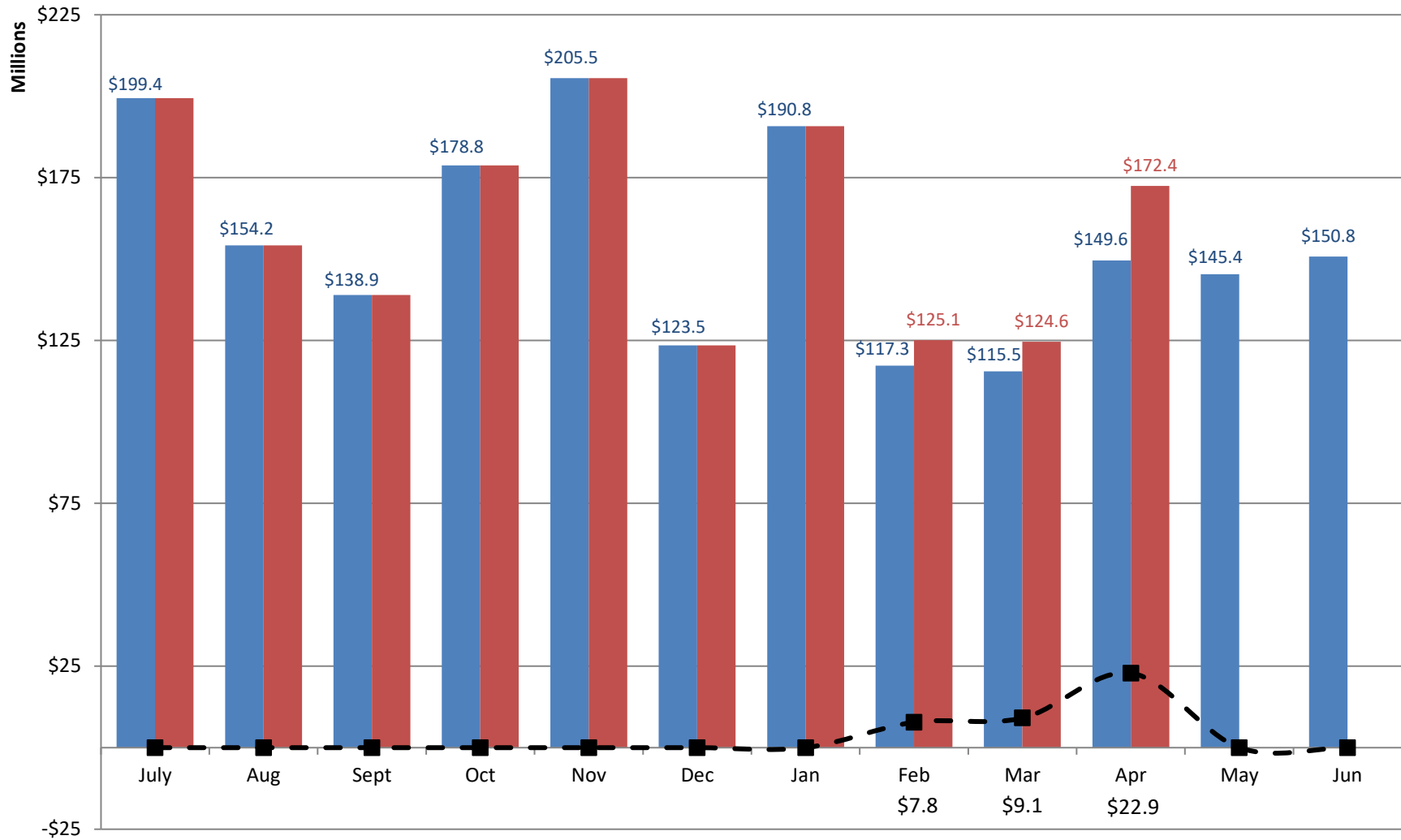
	<b>Leg. Adopted APRIL FY2021</b>	<b>Actual APRIL FY2021</b>	<b>DOLLAR CHANGE</b>	<b>YTD % Chg. Actual/Adopt Comparison</b>
<b>ONGOING RECEIPTS</b>				
Net Sales and Use Tax (excl. cost of admin)	984,707,098	1,010,077,669	25,370,571	2.6%
Lottery	112,363,954	113,397,016	1,033,063	0.9%
Net Contractor's Excise Tax	123,472,152	124,064,008	591,856	0.5%
Insurance Company Tax	91,984,972	92,418,456	433,483	0.5%
Unclaimed Property Receipts	60,395,376	63,444,362	3,048,986	5.0%
Licenses, Permits, and Fees	46,902,503	51,648,283	4,745,780	10.1%
Tobacco Taxes	42,189,826	42,042,443	(147,384)	-0.3%
Trust Funds	28,223,883	28,223,883	0	N/A
Net Transfers In (excluding one-time)	16,738,372	17,953,636	1,215,265	7.3%
Alcohol Beverage Tax	6,588,274	6,769,028	180,754	2.7%
Bank Franchise Tax	13,923,649	17,402,580	3,478,931	25.0%
Charges for Goods and Services	13,009,444	12,813,950	(195,494)	-1.5%
Telecommunications Tax	3,360,992	2,756,811	(604,181)	-18.0%
Severance Taxes	8,908,153	9,536,421	628,268	7.1%
Investment Income and Interest	18,400,619	18,402,416	1,797	0.0%
Alcohol Beverage 2% Wholesale Tax	2,176,788	2,183,053	6,265	0.3%
<b>SUBTOTAL (ONGOING RECEIPTS)</b>	<b>\$ 1,573,346,056</b>	<b>\$ 1,613,134,015</b>	<b>\$ 39,787,959</b>	<b>2.5%</b>
<b>ONE-TIME RECEIPTS</b>				
<sup>1</sup> Closeout of SDRC Inc. Funds	3,381,726	3,381,726	0	0.0%
<sup>2</sup> Refinancing Gains	6,745,654	6,745,654	0	0.0%
<sup>3</sup> One-Time Sales and Use Tax	13,486,289	13,486,289	0	0.0%
<sup>4</sup> Bank Franchise Tax Prior Year Revenue	9,720,271	10,016,931	296,660	3.1%
<b>SUBTOTAL (ONE-TIME RECEIPTS)</b>	<b>\$ 33,333,940</b>	<b>\$ 33,630,600</b>	<b>\$ 296,660</b>	<b>0.9%</b>
<b>GRAND TOTAL</b>	<b>\$ 1,606,679,996</b>	<b>\$ 1,646,764,615</b>	<b>\$ 40,084,619</b>	<b>2.5%</b>

**NOTES**

- <sup>1</sup> Per the SDRC Inc. contract.
- <sup>2</sup> Refinancing Gains are related to savings generated by the refinancing of various bonds at the Board of Regents and Game, Fish, and Parks.
- <sup>3</sup> One-time Sales and Use Tax is due to one-time collections related to the reinvestment program.
- <sup>4</sup> Bank Franchise Tax Prior Year Revenue includes revenue related to the federal income tax filing extension and audits.

# Adopted FY2021 vs. Actual FY2021 Ongoing Receipts

■ Adopted FY2021 Receipts    
 ■ Actual FY2021 Receipts    
 -■- Actual vs. Adopted



Through 10 months, total actual ongoing receipts were \$39.8 million MORE than the Revised Adopted FY2021 estimate.