

**Actual Revenue FY2021 vs. Actual Revenue FY2022  
DECEMBER FY2022 Comparison**

	<b>Actual DECEMBER FY2021</b>	<b>Actual DECEMBER FY2022</b>	<b>DOLLAR CHANGE</b>	<b>PERCENT CHANGE</b>
<b>ONGOING RECEIPTS</b>				
Net Sales and Use Tax (excl. cost of admin)	90,597,309	109,941,667	19,344,359	21.4%
Lottery	10,983,609	13,186,360	2,202,751	20.1%
Net Contractor's Excise Tax	12,003,338	13,223,938	1,220,600	10.2%
Insurance Company Tax	2,681,184	1,134,472	(1,546,712)	-57.7%
Unclaimed Property Receipts	(2,892,248)	5,762,026	8,654,274	-299.2%
Licenses, Permits, and Fees	1,434,622	1,291,378	(143,244)	-10.0%
Tobacco Taxes	4,637,913	5,160,048	522,136	11.3%
Trust Funds	-	-	0	N/A
Net Transfers In (excluding one-time)	1,469,176	682,153	(787,023)	-53.6%
Alcohol Beverage Tax	8,639	9,457	818	9.5%
Bank Franchise Tax	1,144,551	2,066,902	922,350	80.6%
Charges for Goods and Services	877,457	962,413	84,956	9.7%
Telecommunications Tax	246,382	226,588	(19,794)	-8.0%
Severance Taxes	-	6,105	6,105	N/A
Investment Income and Interest	48,297	2,805	(45,492)	-94.2%
Alcohol Beverage 2% Wholesale Tax	247,086	253,302	6,217	2.5%
<b>SUBTOTAL (ONGOING RECEIPTS)</b>	<b>\$ 123,487,314</b>	<b>\$ 153,909,616</b>	<b>\$ 30,422,302</b>	<b>24.6%</b>

**Actual Revenue FY2021 vs. Actual Revenue FY2022  
Year-To-Date Through DECEMBER FY2022 Comparison**

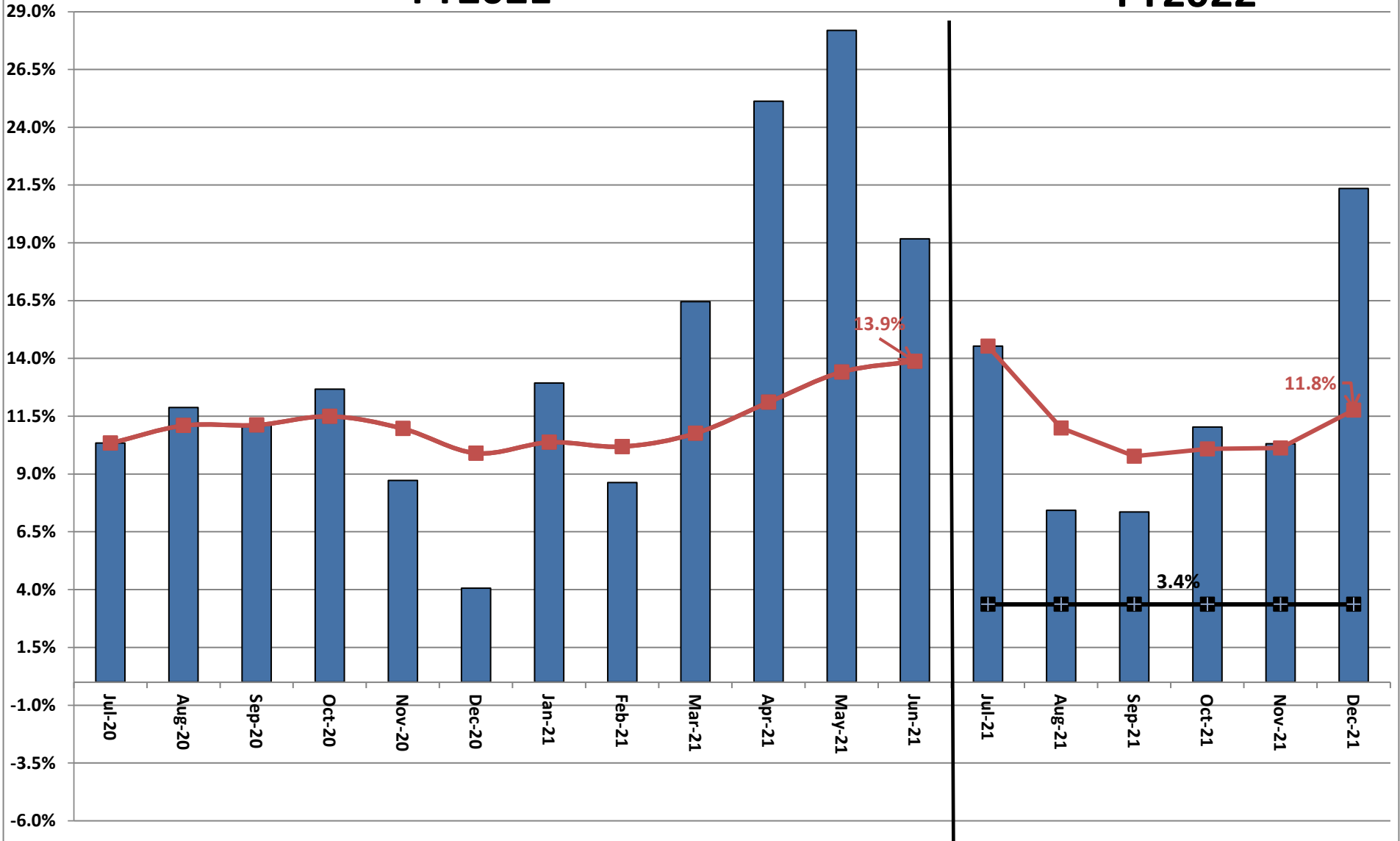
	<b>Actual DECEMBER FY2021</b>	<b>Actual DECEMBER FY2022</b>	<b>DOLLAR CHANGE</b>	<b>YTD GROWTH OVER FY2021</b>
<b>ONGOING RECEIPTS</b>				
Net Sales and Use Tax (excl. cost of admin)	608,222,696	694,821,313	86,598,617	14.2%
Lottery	67,130,744	73,842,420	6,711,676	10.0%
Net Contractor's Excise Tax	81,719,127	85,807,304	4,088,177	5.0%
Insurance Company Tax	46,291,912	45,132,253	(1,159,660)	-2.5%
Unclaimed Property Receipts	69,664,743	55,144,294	(14,520,449)	-20.8%
Licenses, Permits, and Fees	15,776,857	16,666,053	889,196	5.6%
Tobacco Taxes	29,866,064	28,942,988	(923,075)	-3.1%
Trust Funds	28,223,883	29,512,894	1,289,011	4.6%
Net Transfers In (excluding one-time)	13,307,355	13,691,007	383,651	2.9%
Alcohol Beverage Tax	2,339,307	2,550,694	211,387	9.0%
Bank Franchise Tax	1,923,133	3,839,941	1,916,808	99.7%
Charges for Goods and Services	7,959,286	6,031,107	(1,928,179)	-24.2%
Telecommunications Tax	1,788,178	1,188,537	(599,640)	-33.5%
Severance Taxes	6,272,812	5,079,192	(1,193,620)	-19.0%
Investment Income and Interest	18,374,970	19,470,089	1,095,119	6.0%
Alcohol Beverage 2% Wholesale Tax	1,386,854	1,470,456	83,603	6.0%
<b>SUBTOTAL (ONGOING RECEIPTS)</b>	<b>\$ 1,000,247,921</b>	<b>\$ 1,083,190,541</b>	<b>\$ 82,942,619</b>	<b>8.3%</b>
<b>ONE-TIME RECEIPTS</b>				
Bank Franchise Tax Prior Year Revenue	9,724,554	-	(9,724,554)	-100.0%
One-Time Sales and Use Tax	13,486,289	28,305,843	14,819,554	109.9%
One-Time Unclaimed Property	-	14,887,304	14,887,304	N/A
Refinancing Gains	6,745,654	-	(6,745,654)	-100.0%
Charges for Goods and Services	3,381,726	-	(3,381,726)	-100.0%
<b>SUBTOTAL (ONE-TIME RECEIPTS)</b>	<b>\$ 33,338,223</b>	<b>\$ 43,193,147</b>	<b>\$ 9,854,924</b>	<b>29.6%</b>
<b>GRAND TOTAL</b>	<b>\$ 1,033,586,144</b>	<b>\$ 1,126,383,688</b>	<b>\$ 92,797,544</b>	<b>9.0%</b>

# Recent Growth Rates in State Sales and Use Tax



**FY2021**

**FY2022**



**Legislative Adopted FY2022 Estimate (Feb. 2021) vs. Actual Revenues  
DECEMBER FY2022 Comparison**

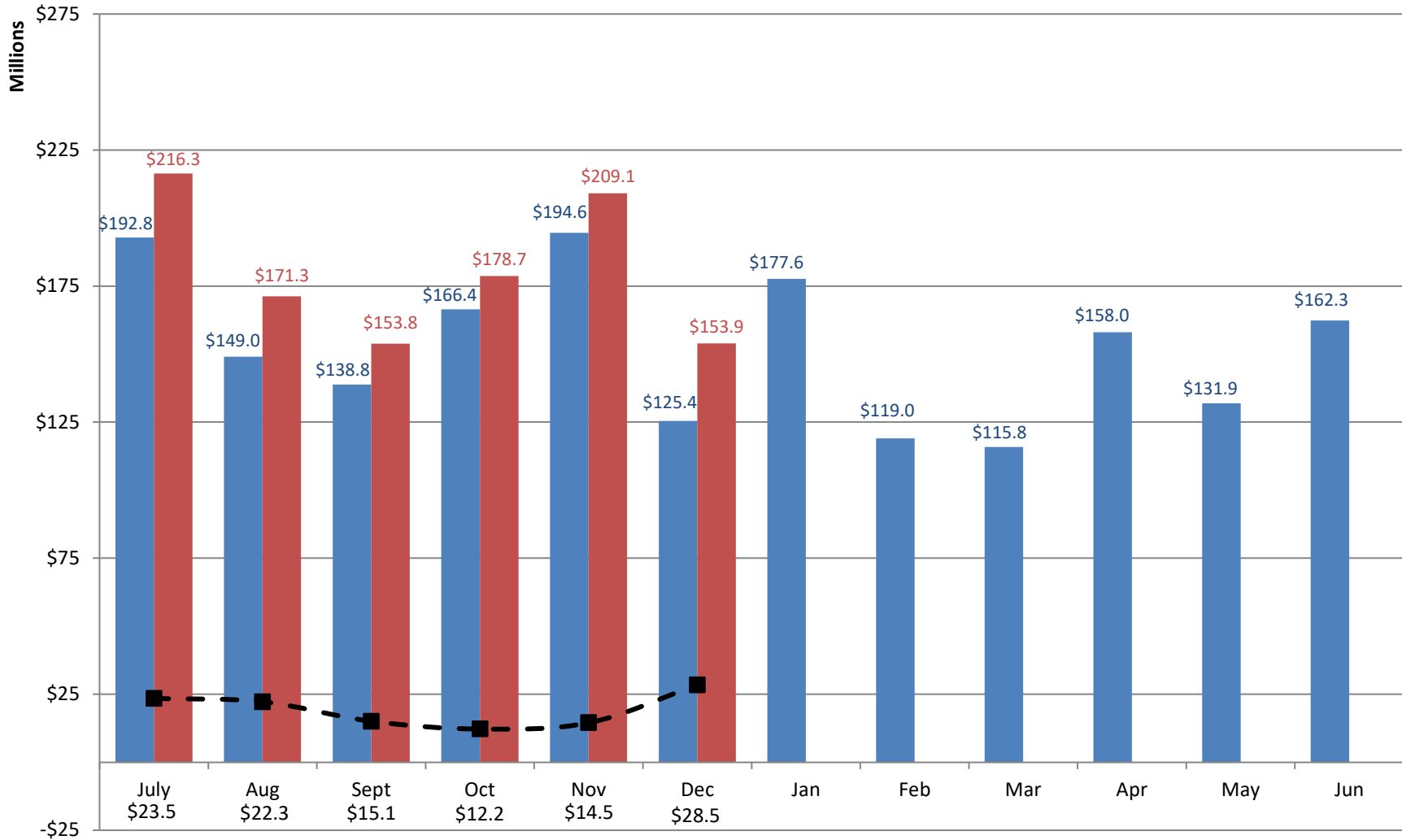
	<b>Leg Adopted DECEMBER FY2022</b>	<b>Actual DECEMBER FY2022</b>	<b>DOLLAR CHANGE</b>	<b>PERCENT CHANGE</b>
<b>ONGOING RECEIPTS</b>				
Net Sales and Use Tax (excl. cost of admin)	92,271,402	109,941,667	17,670,265	19.2%
Lottery	10,523,662	13,186,360	2,662,698	25.3%
Net Contractor's Excise Tax	12,285,597	13,223,938	938,341	7.6%
Insurance Company Tax	2,006,219	1,134,472	(871,747)	-43.5%
Unclaimed Property Receipts	(1,922,849)	5,762,026	7,684,875	-399.7%
Licenses, Permits, and Fees	2,875,705	1,291,378	(1,584,327)	-55.1%
Tobacco Taxes	4,347,412	5,160,048	812,636	18.7%
Trust Funds	-	-	0	N/A
Net Transfers In (excluding one-time)	749,601	682,153	(67,447)	-9.0%
Alcohol Beverage Tax	6,537	9,457	2,920	44.7%
Bank Franchise Tax	539,450	2,066,902	1,527,451	283.1%
Charges for Goods and Services	1,069,381	962,413	(106,967)	-10.0%
Telecommunications Tax	365,573	226,588	(138,985)	-38.0%
Severance Taxes	823	6,105	5,283	642.2%
Investment Income and Interest	18,545	2,805	(15,740)	-84.9%
Alcohol Beverage 2% Wholesale Tax	289,544	253,302	(36,242)	-12.5%
<b>TOTAL (ONGOING RECEIPTS)</b>	<b>\$ 125,426,601</b>	<b>\$ 153,909,616</b>	<b>\$ 28,483,015</b>	<b>22.7%</b>

**Legislative Adopted FY2022 Estimate (Feb. 2021) vs. Actual Revenues  
Year-to-Date Through DECEMBER FY2022 Comparison**

	<b>Leg. Adopted DECEMBER YTD FY2022</b>	<b>Actual DECEMBER YTD FY2022</b>	<b>DOLLAR CHANGE</b>	<b>YTD % Chg. Actual/Adopt Comparison</b>
<b>ONGOING RECEIPTS</b>				
Net Sales and Use Tax (excl. cost of admin)	602,538,134	694,821,313	92,283,178	15.3%
Lottery	63,130,576	73,842,420	10,711,844	17.0%
Net Contractor's Excise Tax	83,019,083	85,807,304	2,788,221	3.4%
Insurance Company Tax	45,131,919	45,132,253	333	0.0%
Unclaimed Property Receipts	53,911,820	55,144,294	1,232,475	2.3%
Licenses, Permits, and Fees	16,928,473	16,666,053	(262,420)	-1.6%
Tobacco Taxes	30,000,000	28,942,988	(1,057,012)	-3.5%
Trust Funds	29,424,278	29,512,894	88,616	0.3%
Net Transfers In (excluding one-time)	12,332,303	13,691,007	1,358,704	11.0%
Alcohol Beverage Tax	2,439,031	2,550,694	111,663	4.6%
Bank Franchise Tax	1,604,802	3,839,941	2,235,138	139.3%
Charges for Goods and Services	7,838,946	6,031,107	(1,807,840)	-23.1%
Telecommunications Tax	1,900,273	1,188,537	(711,736)	-37.5%
Severance Taxes	4,392,938	5,079,192	686,255	15.6%
Investment Income and Interest	11,142,252	19,470,089	8,327,837	74.7%
Alcohol Beverage 2% Wholesale Tax	1,357,950	1,470,456	112,506	8.3%
<b>SUBTOTAL (ONGOING RECEIPTS)</b>	<b>\$ 967,092,778</b>	<b>\$ 1,083,190,541</b>	<b>\$ 116,097,762</b>	<b>12.0%</b>
<b>ONE-TIME RECEIPTS</b>				
One-Time Sales and Use Tax	25,000,000	28,305,843	3,305,843	13.2%
One-Time Unclaimed Property	-	14,887,304	14,887,304	N/A
<b>SUBTOTAL (ONE-TIME RECEIPTS)</b>	<b>\$ 25,000,000</b>	<b>\$ 43,193,147</b>	<b>\$ 18,193,147</b>	<b>72.8%</b>
<b>GRAND TOTAL</b>	<b>\$ 992,092,778</b>	<b>\$ 1,126,383,688</b>	<b>\$ 134,290,909</b>	<b>13.5%</b>

# Adopted FY2022 vs. Actual FY2022 Ongoing Receipts

■ Adopted FY2022 Receipts    
 ■ Actual FY2022 Receipts    
 -■- Actual vs. Adopted



Through 6 months, total actual ongoing receipts were \$116.1 million MORE than the Adopted FY2022 estimate.

**Governor Revised FY2022 Estimate (Nov. 2021) vs. Actual Revenues  
DECEMBER FY2022 Comparison**

	<b>Gov. Revised DECEMBER FY2022</b>	<b>Actual DECEMBER FY2022</b>	<b>DOLLAR CHANGE</b>	<b>MTD % Chg. Actual/Revised Comparison</b>
<b>ONGOING RECEIPTS</b>				
Net Sales and Use Tax (excl. cost of admin)	97,313,723	109,941,667	12,627,945	13.0%
Lottery	12,524,230	13,186,360	662,130	5.3%
Net Contractor's Excise Tax	12,749,417	13,223,938	474,521	3.7%
Insurance Company Tax	2,060,545	1,134,472	(926,072)	-44.9%
Unclaimed Property Receipts	(1,827,203)	5,762,026	7,589,229	-415.3%
Licenses, Permits, and Fees	2,847,129	1,291,378	(1,555,751)	-54.6%
Tobacco Taxes	3,886,081	5,160,048	1,273,968	32.8%
Trust Funds	0	0	0	N/A
Net Transfers In (excluding one-time)	808,099	682,153	(125,946)	-15.6%
Alcohol Beverage Tax	6,565	9,457	2,892	44.0%
Bank Franchise Tax	893,261	2,066,902	1,173,641	131.4%
Charges for Goods and Services	1,283,723	962,413	(321,310)	-25.0%
Telecommunications Tax	250,007	226,588	(23,419)	-9.4%
Severance Taxes	1,217	6,105	4,889	401.8%
Investment Income and Interest	14,952	2,805	(12,147)	-81.2%
Alcohol Beverage 2% Wholesale Tax	280,201	253,302	(26,898)	-9.6%
<b>TOTAL (ONGOING RECEIPTS)</b>	<b>\$ 133,091,945</b>	<b>\$ 153,909,616</b>	<b>\$ 20,817,671</b>	<b>15.6%</b>

**Governor Revised FY2022 Estimate (Nov. 2021) vs. Actual Revenues  
Year-To-Date Through DECEMBER FY2022 Comparison**

	<b>Gov. Revised YTD FY2022</b>	<b>Actual YTD FY2022</b>	<b>DOLLAR CHANGE</b>	<b>YTD % Chg. Actual/Revised Comparison</b>
<b>ONGOING RECEIPTS</b>				
Net Sales and Use Tax (excl. cost of admin)	674,118,895	694,821,313	20,702,418	3.1%
Lottery	72,332,299	73,842,420	1,510,121	2.1%
Net Contractor's Excise Tax	86,161,165	85,807,304	(353,861)	-0.4%
Insurance Company Tax	46,966,922	45,132,253	(1,834,669)	-3.9%
Unclaimed Property Receipts	48,142,679	55,144,294	7,001,615	14.5%
Licenses, Permits, and Fees	17,697,199	16,666,053	(1,031,146)	-5.8%
Tobacco Taxes	27,685,107	28,942,988	1,257,881	4.5%
Trust Funds	29,512,894	29,512,894	0	0.0%
Net Transfers In (excluding one-time)	13,468,581	13,691,007	222,426	1.7%
Alcohol Beverage Tax	2,544,466	2,550,694	6,228	0.2%
Bank Franchise Tax	2,451,036	3,839,941	1,388,905	56.7%
Charges for Goods and Services	6,545,103	6,031,107	(513,997)	-7.9%
Telecommunications Tax	1,225,386	1,188,537	(36,849)	-3.0%
Severance Taxes	2,738,836	5,079,192	2,340,356	85.5%
Investment Income and Interest	19,511,906	19,470,089	(41,817)	-0.2%
Alcohol Beverage 2% Wholesale Tax	1,442,581	1,470,456	27,875	1.9%
<b>SUBTOTAL (ONGOING RECEIPTS)</b>	<b>\$ 1,052,545,055</b>	<b>\$ 1,083,190,541</b>	<b>\$ 30,645,486</b>	<b>2.9%</b>
<b>ONE-TIME RECEIPTS</b>				
One Time Sales and Use Tax	28,305,843	28,305,843	0	0.0%
One-Time Unclaimed Property	14,887,304	14,887,304	0	0.0%
<b>SUBTOTAL (ONE-TIME RECEIPTS)</b>	<b>\$ 43,193,147</b>	<b>\$ 43,193,147</b>	<b>\$ -</b>	<b>0.0%</b>
<b>GRAND TOTAL</b>	<b>\$ 1,095,738,202</b>	<b>\$ 1,126,383,688</b>	<b>\$ 30,645,486</b>	<b>2.8%</b>