

**Actual Revenue FY2021 vs. Actual Revenue FY2022  
JANUARY FY2022 Comparison**

	<b>Actual JANUARY FY2021</b>	<b>Actual JANUARY FY2022</b>	<b>DOLLAR CHANGE</b>	<b>PERCENT CHANGE</b>
<b>ONGOING RECEIPTS</b>				
Net Sales and Use Tax (excl. cost of admin)	118,006,494	131,111,716	13,105,222	11.1%
Lottery	12,621,635	19,645,080	7,023,445	55.6%
Net Contractor's Excise Tax	16,265,965	16,849,204	583,239	3.6%
Insurance Company Tax	13,253,821	14,770,609	1,516,788	11.4%
Unclaimed Property Receipts	(1,553,987)	344,025	1,898,013	-122.1%
Licenses, Permits, and Fees	23,610,554	10,106,711	(13,503,843)	-57.2%
Tobacco Taxes	131,804	1,057,012	925,208	702.0%
Trust Funds	-	-	0	N/A
Net Transfers In (excluding one-time)	643,576	2,010,531	1,366,955	212.4%
Alcohol Beverage Tax	2,438,661	2,369,639	(69,023)	-2.8%
Bank Franchise Tax	1,512,472	1,023,820	(488,652)	-32.3%
Charges for Goods and Services	1,391,887	1,451,429	59,542	4.3%
Telecommunications Tax	230,526	222,517	(8,010)	-3.5%
Severance Taxes	1,958,891	-	(1,958,891)	-100.0%
Investment Income and Interest	2,905	12,935	10,030	345.2%
Alcohol Beverage 2% Wholesale Tax	268,670	-	(268,670)	-100.0%
<b>SUBTOTAL (ONGOING RECEIPTS)</b>	<b>\$ 190,783,874</b>	<b>\$ 200,975,227</b>	<b>\$ 10,191,353</b>	<b>5.3%</b>

**Actual Revenue FY2021 vs. Actual Revenue FY2022  
Year-To-Date Through JANUARY FY2022 Comparison**

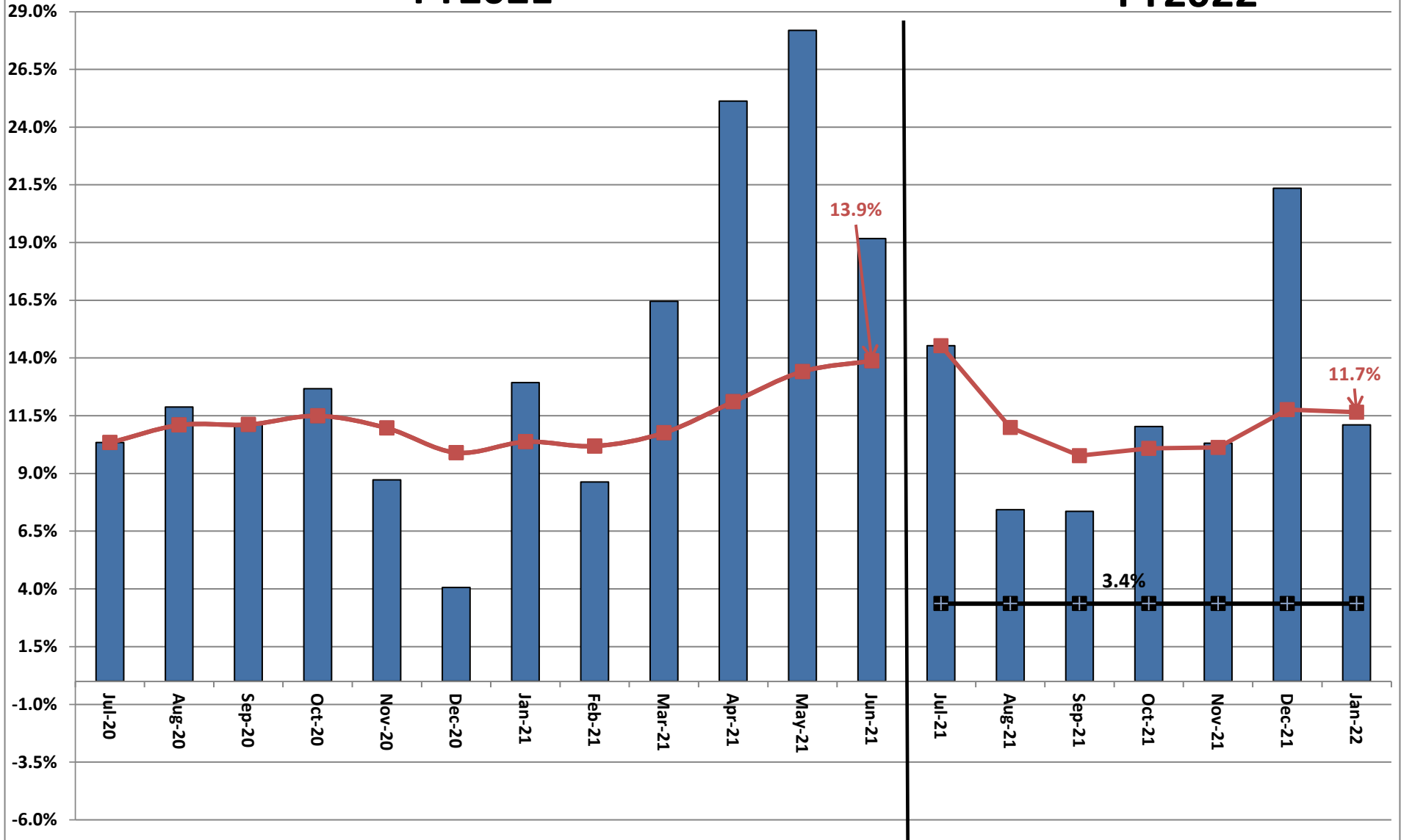
	<b>Actual JANUARY FY2021</b>	<b>Actual JANUARY FY2022</b>	<b>DOLLAR CHANGE</b>	<b>YTD GROWTH OVER FY2021</b>
<b>ONGOING RECEIPTS</b>				
Net Sales and Use Tax (excl. cost of admin)	726,229,189	825,933,028	99,703,839	13.7%
Lottery	79,752,380	93,487,500	13,735,120	17.2%
Net Contractor's Excise Tax	97,985,092	102,656,508	4,671,416	4.8%
Insurance Company Tax	59,545,733	59,902,862	357,129	0.6%
Unclaimed Property Receipts	68,110,756	55,488,320	(12,622,437)	-18.5%
Licenses, Permits, and Fees	39,387,411	26,772,764	(12,614,647)	-32.0%
Tobacco Taxes	29,997,868	30,000,000	2,132	0.0%
Trust Funds	28,223,883	29,512,894	1,289,011	4.6%
Net Transfers In (excluding one-time)	13,950,931	15,701,537	1,750,606	12.5%
Alcohol Beverage Tax	4,777,968	4,920,332	142,364	3.0%
Bank Franchise Tax	3,435,604	4,863,761	1,428,156	41.6%
Charges for Goods and Services	9,351,173	7,482,535	(1,868,637)	-20.0%
Telecommunications Tax	2,018,704	1,411,054	(607,650)	-30.1%
Severance Taxes	8,231,703	5,079,192	(3,152,511)	-38.3%
Investment Income and Interest	18,377,875	19,483,023	1,105,148	6.0%
Alcohol Beverage 2% Wholesale Tax	1,655,524	1,470,456	(185,068)	-11.2%
<b>SUBTOTAL (ONGOING RECEIPTS)</b>	<b>\$ 1,191,031,795</b>	<b>\$ 1,284,165,767</b>	<b>\$ 93,133,973</b>	<b>7.8%</b>
<b>ONE-TIME RECEIPTS</b>				
Bank Franchise Tax Prior Year Revenue	9,724,554	-	(9,724,554)	-100.0%
One-Time Sales and Use Tax	13,486,289	28,305,843	14,819,554	109.9%
One-Time Unclaimed Property	-	14,887,304	14,887,304	N/A
Refinancing Gains	6,745,654	-	(6,745,654)	-100.0%
Charges for Goods and Services	3,381,726	-	(3,381,726)	-100.0%
<b>SUBTOTAL (ONE-TIME RECEIPTS)</b>	<b>\$ 33,338,223</b>	<b>\$ 43,193,147</b>	<b>\$ 9,854,924</b>	<b>29.6%</b>
<b>GRAND TOTAL</b>	<b>\$ 1,224,370,018</b>	<b>\$ 1,327,358,915</b>	<b>\$ 102,988,897</b>	<b>8.4%</b>

# Recent Growth Rates in State Sales and Use Tax



**FY2021**

**FY2022**



**Legislative Adopted FY2022 Estimate (Feb. 2021) vs. Actual Revenues  
JANUARY FY2022 Comparison**

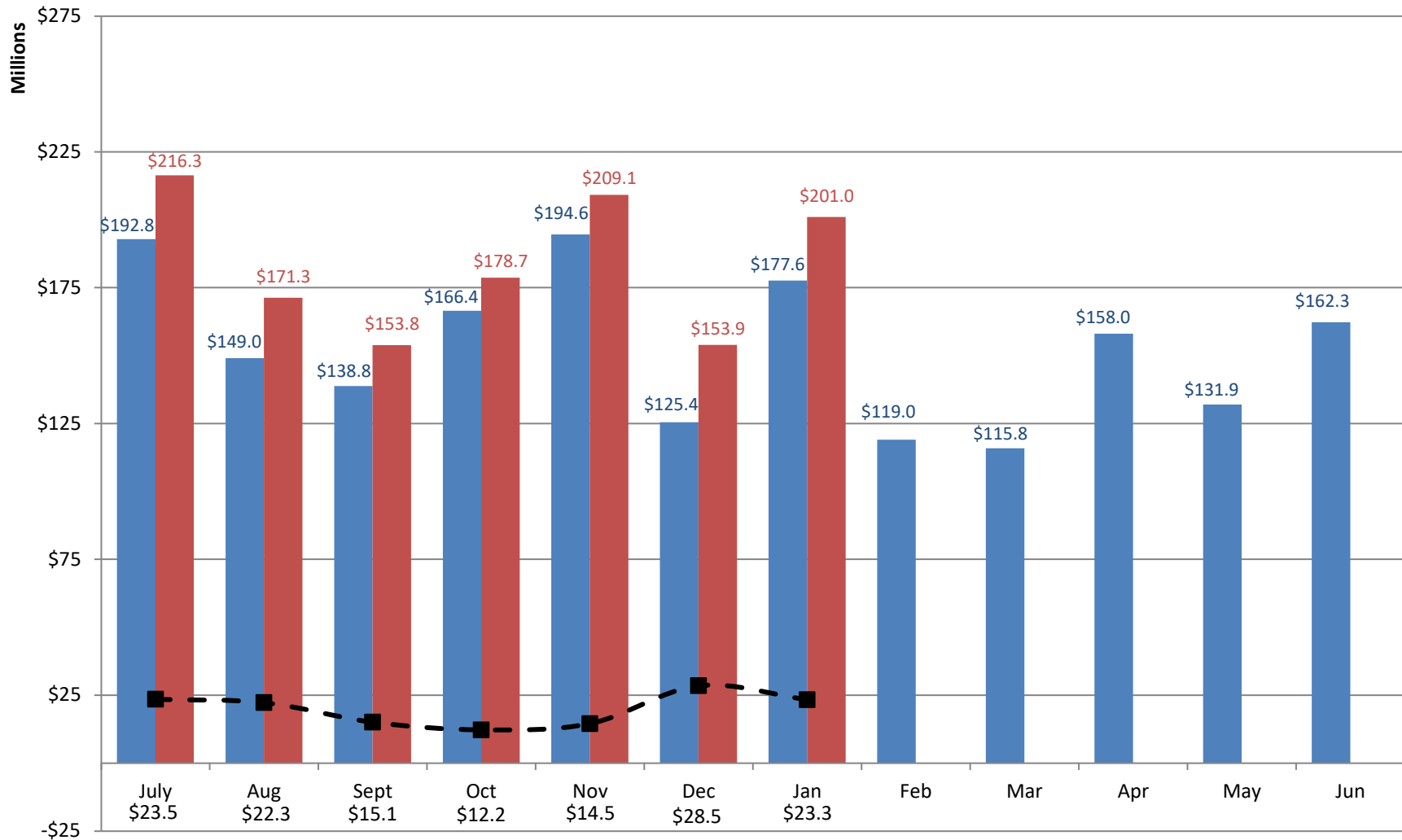
	<b>Leg Adopted JANUARY FY2022</b>	<b>Actual JANUARY FY2022</b>	<b>DOLLAR CHANGE</b>	<b>PERCENT CHANGE</b>
<b>ONGOING RECEIPTS</b>				
Net Sales and Use Tax (excl. cost of admin)	110,434,622	131,111,716	20,677,094	18.7%
Lottery	10,847,785	19,645,080	8,797,295	81.1%
Net Contractor's Excise Tax	14,641,868	16,849,204	2,207,336	15.1%
Insurance Company Tax	15,318,339	14,770,609	(547,730)	-3.6%
Unclaimed Property Receipts	(1,522,521)	344,025	1,866,546	-122.6%
Licenses, Permits, and Fees	19,742,897	10,106,711	(9,636,186)	-48.8%
Tobacco Taxes	-	1,057,012	1,057,012	N/A
Trust Funds	-	-	0	N/A
Net Transfers In (excluding one-time)	604,292	2,010,531	1,406,239	232.7%
Alcohol Beverage Tax	2,306,499	2,369,639	63,139	2.7%
Bank Franchise Tax	1,520,319	1,023,820	(496,499)	-32.7%
Charges for Goods and Services	1,292,863	1,451,429	158,565	12.3%
Telecommunications Tax	361,164	222,517	(138,648)	-38.4%
Severance Taxes	1,812,523	-	(1,812,523)	-100.0%
Investment Income and Interest	31,864	12,935	(18,930)	-59.4%
Alcohol Beverage 2% Wholesale Tax	250,387	-	(250,387)	-100.0%
<b>TOTAL (ONGOING RECEIPTS)</b>	<b>\$ 177,642,902</b>	<b>\$ 200,975,227</b>	<b>\$ 23,332,324</b>	<b>13.1%</b>

**Legislative Adopted FY2022 Estimate (Feb. 2021) vs. Actual Revenues  
Year-to-Date Through JANUARY FY2022 Comparison**

	<b>Leg. Adopted JANUARY YTD FY2022</b>	<b>Actual JANUARY YTD FY2022</b>	<b>DOLLAR CHANGE</b>	<b>YTD % Chg. Actual/Adopt Comparison</b>
<b>ONGOING RECEIPTS</b>				
Net Sales and Use Tax (excl. cost of admin)	712,972,756	825,933,028	112,960,273	15.8%
Lottery	73,978,361	93,487,500	19,509,139	26.4%
Net Contractor's Excise Tax	97,660,951	102,656,508	4,995,557	5.1%
Insurance Company Tax	60,450,258	59,902,862	(547,397)	-0.9%
Unclaimed Property Receipts	52,389,299	55,488,320	3,099,021	5.9%
Licenses, Permits, and Fees	36,671,371	26,772,764	(9,898,606)	-27.0%
Tobacco Taxes	30,000,000	30,000,000	0	0.0%
Trust Funds	29,424,278	29,512,894	88,616	0.3%
Net Transfers In (excluding one-time)	12,936,595	15,701,537	2,764,943	21.4%
Alcohol Beverage Tax	4,745,530	4,920,332	174,802	3.7%
Bank Franchise Tax	3,125,122	4,863,761	1,738,639	55.6%
Charges for Goods and Services	9,131,810	7,482,535	(1,649,275)	-18.1%
Telecommunications Tax	2,261,437	1,411,054	(850,384)	-37.6%
Severance Taxes	6,205,460	5,079,192	(1,126,268)	-18.1%
Investment Income and Interest	11,174,116	19,483,023	8,308,907	74.4%
Alcohol Beverage 2% Wholesale Tax	1,608,337	1,470,456	(137,881)	-8.6%
<b>SUBTOTAL (ONGOING RECEIPTS)</b>	<b>\$ 1,144,735,681</b>	<b>\$ 1,284,165,767</b>	<b>\$ 139,430,086</b>	<b>12.2%</b>
<b>ONE-TIME RECEIPTS</b>				
One-Time Sales and Use Tax	25,000,000	28,305,843	3,305,843	13.2%
One-Time Unclaimed Property	-	14,887,304	14,887,304	N/A
<b>SUBTOTAL (ONE-TIME RECEIPTS)</b>	<b>\$ 25,000,000</b>	<b>\$ 43,193,147</b>	<b>\$ 18,193,147</b>	<b>72.8%</b>
<b>GRAND TOTAL</b>	<b>\$ 1,169,735,681</b>	<b>\$ 1,327,358,915</b>	<b>\$ 157,623,234</b>	<b>13.5%</b>

# Adopted FY2022 vs. Actual FY2022 Ongoing Receipts

■ Adopted FY2022 Receipts    
 ■ Actual FY2022 Receipts    
 -■- Actual vs. Adopted



Through 7 months, total actual ongoing receipts were \$139.4 million MORE than the Adopted FY2022 estimate.

**Governor Revised FY2022 Estimate (Nov. 2021) vs. Actual Revenues  
JANUARY FY2022 Comparison**

	<b>Gov. Revised JANUARY FY2022</b>	<b>Actual JANUARY FY2022</b>	<b>DOLLAR CHANGE</b>	<b>MTD % Chg. Actual/Revised Comparison</b>
<b>ONGOING RECEIPTS</b>				
Net Sales and Use Tax (excl. cost of admin)	114,682,169	131,111,716	16,429,547	14.3%
Lottery	12,909,969	19,645,080	6,735,111	52.2%
Net Contractor's Excise Tax	14,936,780	16,849,204	1,912,425	12.8%
Insurance Company Tax	16,000,165	14,770,609	(1,229,556)	-7.7%
Unclaimed Property Receipts	(1,446,788)	344,025	1,790,813	-123.8%
Licenses, Permits, and Fees	19,546,713	10,106,711	(9,440,002)	-48.3%
Tobacco Taxes	3,519,846	1,057,012	(2,462,834)	-70.0%
Trust Funds	-	-	0	N/A
Net Transfers In (excluding one-time)	651,450	2,010,531	1,359,080	208.6%
Alcohol Beverage Tax	2,316,558	2,369,639	53,081	2.3%
Bank Franchise Tax	2,517,454	1,023,820	(1,493,634)	-59.3%
Charges for Goods and Services	1,552,000	1,451,429	(100,571)	-6.5%
Telecommunications Tax	246,992	222,517	(24,475)	-9.9%
Severance Taxes	2,680,885	-	(2,680,885)	-100.0%
Investment Income and Interest	25,691	12,935	(12,756)	-49.7%
Alcohol Beverage 2% Wholesale Tax	242,307	-	(242,307)	-100.0%
<b>TOTAL (ONGOING RECEIPTS)</b>	<b>\$ 190,382,190</b>	<b>\$ 200,975,227</b>	<b>\$ 10,593,037</b>	<b>5.6%</b>

**Governor Revised FY2022 Estimate (Nov. 2021) vs. Actual Revenues  
Year-To-Date Through JANUARY FY2022 Comparison**

	<b>Gov. Revised YTD FY2022</b>	<b>Actual YTD FY2022</b>	<b>DOLLAR CHANGE</b>	<b>YTD % Chg. Actual/Revised Comparison</b>
<b>ONGOING RECEIPTS</b>				
Net Sales and Use Tax (excl. cost of admin)	788,801,064	825,933,028	37,131,965	4.7%
Lottery	85,242,268	93,487,500	8,245,232	9.7%
Net Contractor's Excise Tax	101,097,945	102,656,508	1,558,563	1.5%
Insurance Company Tax	62,967,087	59,902,862	(3,064,225)	-4.9%
Unclaimed Property Receipts	46,695,892	55,488,320	8,792,428	18.8%
Licenses, Permits, and Fees	37,243,912	26,772,764	(10,471,148)	-28.1%
Tobacco Taxes	31,204,952	30,000,000	(1,204,952)	-3.9%
Trust Funds	29,512,894	29,512,894	0	0.0%
Net Transfers In (excluding one-time)	14,120,031	15,701,537	1,581,506	11.2%
Alcohol Beverage Tax	4,861,023	4,920,332	59,309	1.2%
Bank Franchise Tax	4,968,490	4,863,761	(104,729)	-2.1%
Charges for Goods and Services	8,097,103	7,482,535	(614,568)	-7.6%
Telecommunications Tax	1,472,378	1,411,054	(61,324)	-4.2%
Severance Taxes	5,419,722	5,079,192	(340,529)	-6.3%
Investment Income and Interest	19,537,596	19,483,023	(54,573)	-0.3%
Alcohol Beverage 2% Wholesale Tax	1,684,888	1,470,456	(214,432)	-12.7%
<b>SUBTOTAL (ONGOING RECEIPTS)</b>	<b>\$ 1,242,927,245</b>	<b>\$ 1,284,165,767</b>	<b>\$ 41,238,523</b>	<b>3.3%</b>
<b>ONE-TIME RECEIPTS</b>				
One Time Sales and Use Tax	28,305,843	28,305,843	0	0.0%
One-Time Unclaimed Property	14,887,304	14,887,304	0	0.0%
<b>SUBTOTAL (ONE-TIME RECEIPTS)</b>	<b>\$ 43,193,147</b>	<b>\$ 43,193,147</b>	<b>\$ -</b>	<b>0.0%</b>
<b>GRAND TOTAL</b>	<b>\$ 1,286,120,392</b>	<b>\$ 1,327,358,915</b>	<b>\$ 41,238,523</b>	<b>3.2%</b>