

**Actual Revenue FY2021 vs. Actual Revenue FY2022
MARCH FY2022 Comparison**

	Actual MARCH FY2021	Actual MARCH FY2022	DOLLAR CHANGE	PERCENT CHANGE
ONGOING RECEIPTS				
Net Sales and Use Tax (excl. cost of admin)	88,832,069	94,704,338	5,872,269	6.6%
Lottery	12,408,555	13,282,035	873,480	7.0%
Net Contractor's Excise Tax	7,457,499	8,816,373	1,358,874	18.2%
Insurance Company Tax	5,516,706	8,124,238	2,607,532	47.3%
Unclaimed Property Receipts	(1,955,659)	(4,223,585)	(2,267,927)	-116.0%
Licenses, Permits, and Fees	1,107,704	2,034,256	926,552	83.6%
Tobacco Taxes	4,700,224	4,072,538	(627,686)	-13.4%
Trust Funds	-	-	0	N/A
Net Transfers In (excluding one-time)	683,102	320,600	(362,502)	-53.1%
Alcohol Beverage Tax	9,469	5,533	(3,937)	-41.6%
Bank Franchise Tax	4,593,905	3,314,025	(1,279,880)	-27.9%
Charges for Goods and Services	884,453	853,265	(31,188)	-3.5%
Telecommunications Tax	240,951	216,347	(24,604)	-10.2%
Severance Taxes	-	91	91	N/A
Investment Income and Interest	16,849	4,696	(12,152)	-72.1%
Alcohol Beverage 2% Wholesale Tax	123,042	456,791	333,749	271.2%
SUBTOTAL (ONGOING RECEIPTS)	\$ 124,618,870	\$ 131,981,540	\$ 7,362,670	5.9%

**Actual Revenue FY2021 vs. Actual Revenue FY2022
Year-To-Date Through MARCH FY2022 Comparison**

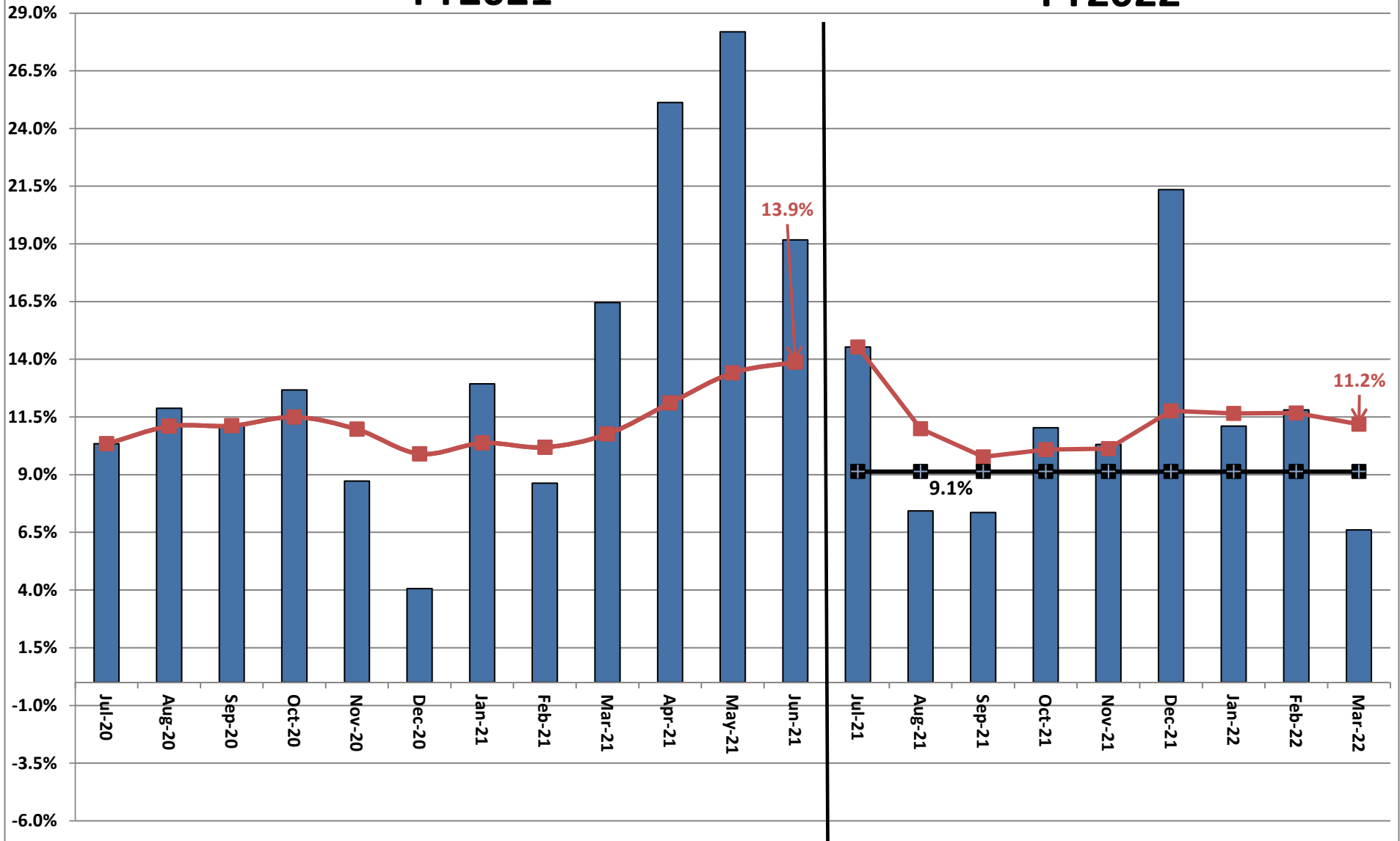
	Actual MARCH FY2021	Actual MARCH FY2022	DOLLAR CHANGE	YTD GROWTH OVER FY2021
ONGOING RECEIPTS				
Net Sales and Use Tax (excl. cost of admin)	903,174,533	1,019,155,088	115,980,555	12.8%
Lottery	104,448,087	119,592,337	15,144,249	14.5%
Net Contractor's Excise Tax	114,019,868	121,804,152	7,784,284	6.8%
Insurance Company Tax	76,248,674	80,265,848	4,017,175	5.3%
Unclaimed Property Receipts	64,892,302	66,152,038	1,259,737	1.9%
Licenses, Permits, and Fees	41,496,744	29,689,802	(11,806,942)	-28.5%
Tobacco Taxes	36,975,249	35,261,313	(1,713,936)	-4.6%
Trust Funds	28,223,883	29,512,894	1,289,011	4.6%
Net Transfers In (excluding one-time)	15,564,825	16,532,425	967,600	6.2%
Alcohol Beverage Tax	4,792,121	4,931,378	139,257	2.9%
Bank Franchise Tax	8,274,074	8,283,909	9,835	0.1%
Charges for Goods and Services	11,241,220	9,931,082	(1,310,138)	-11.7%
Telecommunications Tax	2,527,103	1,876,148	(650,955)	-25.8%
Severance Taxes	8,424,991	6,597,599	(1,827,391)	-21.7%
Investment Income and Interest	18,397,592	19,492,730	1,095,138	6.0%
Alcohol Beverage 2% Wholesale Tax	2,003,271	2,172,747	169,475	8.5%
SUBTOTAL (ONGOING RECEIPTS)	\$ 1,440,704,535	\$ 1,571,251,490	\$ 130,546,954	9.1%
ONE-TIME RECEIPTS				
Bank Franchise Tax Prior Year Revenue	10,016,931	416,316	(9,600,615)	-95.8%
One-Time Sales and Use Tax	13,486,289	28,305,843	14,819,554	109.9%
Refinancing Gains	6,745,654	-	(6,745,654)	-100.0%
Charges for Goods and Services	3,381,726	-	(3,381,726)	-100.0%
SUBTOTAL (ONE-TIME RECEIPTS)	\$ 33,630,600	\$ 28,722,159	\$ (4,908,440)	-14.6%
GRAND TOTAL	\$ 1,474,335,135	\$ 1,599,973,649	\$ 125,638,514	8.5%

Recent Growth Rates in State Sales and Use Tax



FY2021

FY2022



**Legislative Adopted FY2022 Estimate (Feb. 2022) vs. Actual Revenues
MARCH FY2022 Comparison**

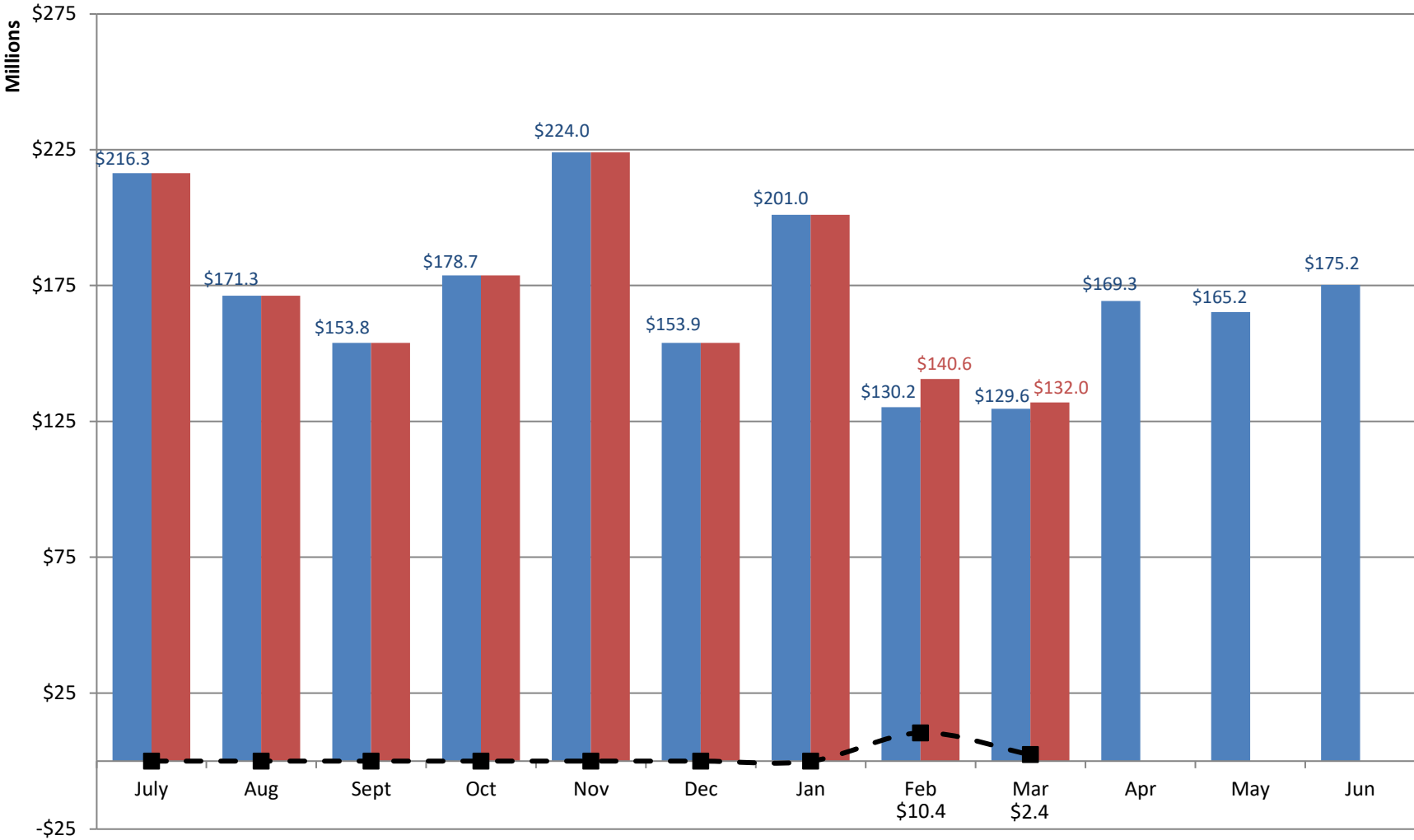
	Leg Adopted MARCH FY2022	Actual MARCH FY2022	DOLLAR CHANGE	PERCENT CHANGE
ONGOING RECEIPTS				
Net Sales and Use Tax (excl. cost of admin)	90,749,369	94,704,338	3,954,969	4.4%
Lottery	13,734,079	13,282,035	(452,045)	-3.3%
Net Contractor's Excise Tax	7,907,061	8,816,373	909,312	11.5%
Insurance Company Tax	7,463,753	8,124,238	660,484	8.8%
Unclaimed Property Receipts	(1,510,175)	(4,223,585)	(2,713,410)	-179.7%
Licenses, Permits, and Fees	1,511,699	2,034,256	522,557	34.6%
Tobacco Taxes	4,875,354	4,072,538	(802,815)	-16.5%
Trust Funds	-	-	0	N/A
Net Transfers In (excluding one-time)	568,589	320,600	(247,989)	-43.6%
Alcohol Beverage Tax	4,667	5,533	866	18.5%
Bank Franchise Tax	2,594,090	3,314,025	719,935	27.8%
Charges for Goods and Services	1,146,041	853,265	(292,776)	-25.5%
Telecommunications Tax	233,901	216,347	(17,555)	-7.5%
Severance Taxes	111,525	91	(111,435)	-99.9%
Investment Income and Interest	13,584	4,696	(8,887)	-65.4%
Alcohol Beverage 2% Wholesale Tax	189,393	456,791	267,399	141.2%
TOTAL (ONGOING RECEIPTS)	\$ 129,592,929	\$ 131,981,540	\$ 2,388,610	1.8%

**Legislative Adopted FY2022 Estimate (Feb. 2022) vs. Actual Revenues
Year-to-Date Through MARCH FY2022 Comparison**

	Leg. Adopted MARCH YTD FY2022	Actual MARCH YTD FY2022	DOLLAR CHANGE	YTD % Chg. Actual/Adopt Comparison
ONGOING RECEIPTS				
Net Sales and Use Tax (excl. cost of admin)	1,011,983,191	1,019,155,088	7,171,897	0.7%
Lottery	119,383,131	119,592,337	209,206	0.2%
Net Contractor's Excise Tax	120,075,988	121,804,152	1,728,164	1.4%
Insurance Company Tax	76,547,684	80,265,848	3,718,164	4.9%
Unclaimed Property Receipts	67,159,652	66,152,038	(1,007,614)	-1.5%
Licenses, Permits, and Fees	29,585,829	29,689,802	103,973	0.4%
Tobacco Taxes	36,003,236	35,261,313	(741,923)	-2.1%
Trust Funds	29,512,894	29,512,894	0	0.0%
Net Transfers In (excluding one-time)	16,591,241	16,532,425	(58,816)	-0.4%
Alcohol Beverage Tax	4,929,998	4,931,378	1,380	0.0%
Bank Franchise Tax	7,538,842	8,283,909	745,067	9.9%
Charges for Goods and Services	9,994,593	9,931,082	(63,511)	-0.6%
Telecommunications Tax	1,957,243	1,876,148	(81,095)	-4.1%
Severance Taxes	5,705,351	6,597,599	892,249	15.6%
Investment Income and Interest	19,503,191	19,492,730	(10,461)	-0.1%
Alcohol Beverage 2% Wholesale Tax	1,998,937	2,172,747	173,809	8.7%
SUBTOTAL (ONGOING RECEIPTS)	\$ 1,558,471,000	\$ 1,571,251,490	\$ 12,780,489	0.8%
ONE-TIME RECEIPTS				
Bank Franchise Tax Prior Year Revenue	416,316	416,316	0	0.0%
One-Time Sales and Use Tax	28,305,843	28,305,843	0	0.0%
SUBTOTAL (ONE-TIME RECEIPTS)	\$ 28,722,159	\$ 28,722,159	\$ 0	0.0%
GRAND TOTAL	\$ 1,587,193,159	\$ 1,599,973,649	\$ 12,780,489	0.8%

Revised Adopted FY2022 vs. Actual FY2022 Ongoing Receipts

■ Rev. Adopted FY2022 Receipts
 ■ Actual FY2022 Receipts
 -■- Actual vs. Adopted



Through 9 months, total actual ongoing receipts were \$12.8 million MORE than the Revised Adopted FY2022 estimate.