

**Actual Revenue FY2022 vs. Actual Revenue FY2023  
JULY FY2023 Comparison**

	<b>Actual JULY FY2022</b>	<b>Actual JULY FY2023</b>	<b>DOLLAR CHANGE</b>	<b>PERCENT CHANGE</b>
<b>ONGOING RECEIPTS</b>				
Net Sales and Use Tax (excl. cost of admin)	124,568,241	139,814,673	15,246,433	12.2%
Lottery	12,556,369	12,979,955	423,586	3.4%
Net Contractor's Excise Tax	15,342,214	18,041,434	2,699,220	17.6%
Insurance Company Tax	19,912,798	16,362,971	(3,549,827)	-17.8%
Unclaimed Property Receipts	(3,430,312)	(2,024,146)	1,406,165	-41.0%
Licenses, Permits, and Fees	1,023,598	608,375	(415,222)	-40.6%
Tobacco Taxes	5,437,780	5,108,802	(328,978)	-6.0%
Trust Funds	29,512,894	31,890,322	2,377,428	8.1%
Net Transfers In (excluding one-time)	8,442,988	7,662,177	(780,811)	-9.2%
Alcohol Beverage Tax	15,245	11,062	(4,183)	-27.4%
Bank Franchise Tax	53,030	53,876	846	1.6%
Charges for Goods and Services	572,047	727,596	155,549	27.2%
Telecommunications Tax	-	-	0	N/A
Severance Taxes	2,080,422	273,240	(1,807,182)	-86.9%
Investment Income and Interest	5,196	5,687	491	9.5%
Alcohol Beverage 2% Wholesale Tax	252,704	285,194	32,490	12.9%
<b>SUBTOTAL (ONGOING RECEIPTS)</b>	<b>\$ 216,345,213</b>	<b>\$ 231,801,217</b>	<b>\$ 15,456,005</b>	<b>7.1%</b>

**Actual Revenue FY2022 vs. Actual Revenue FY2023  
Year-To-Date Through JULY FY2023 Comparison**

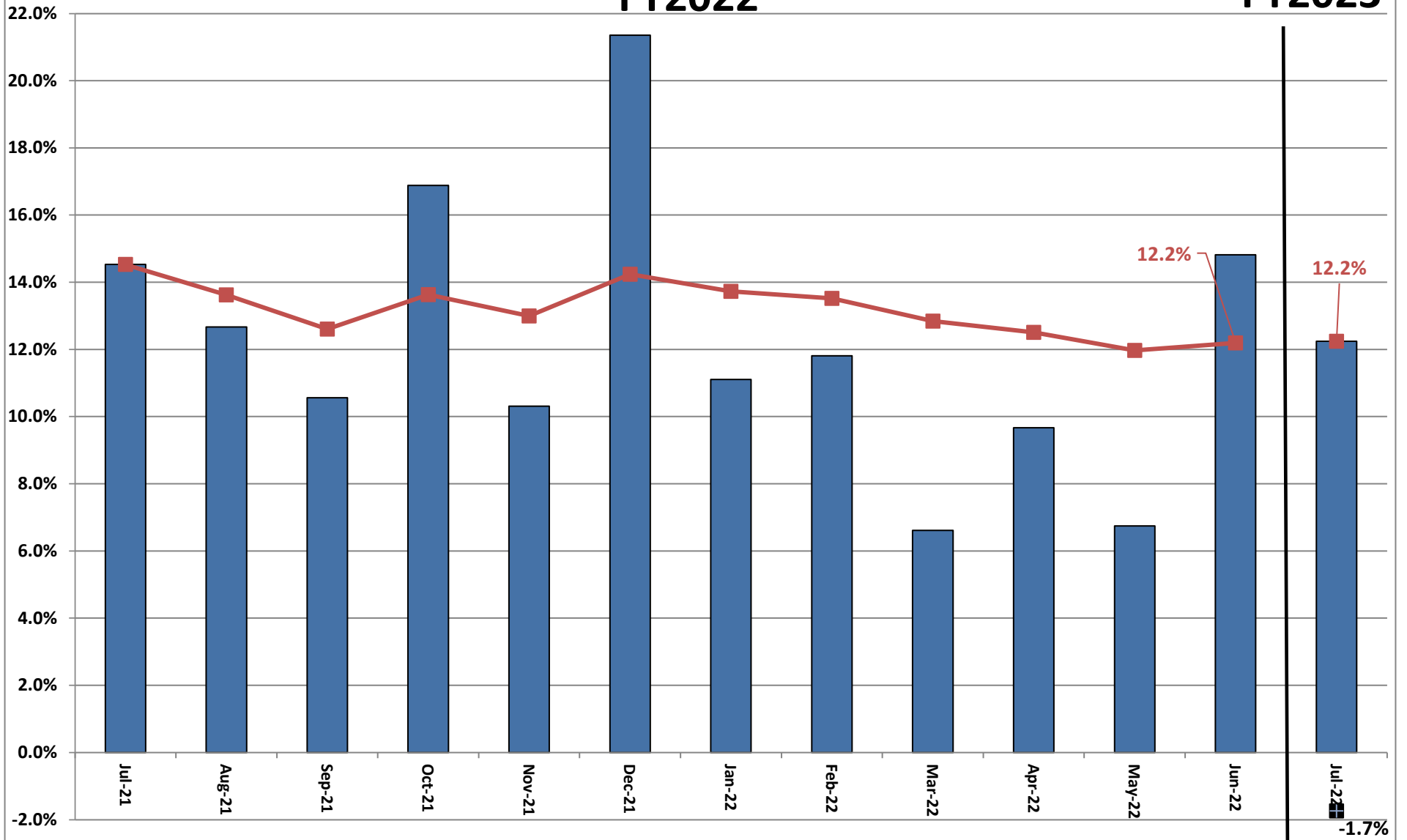
	<b>Actual JULY FY2022</b>	<b>Actual JULY FY2023</b>	<b>DOLLAR CHANGE</b>	<b>YTD GROWTH OVER FY2022</b>
<b>ONGOING RECEIPTS</b>				
Net Sales and Use Tax (excl. cost of admin)	124,568,241	139,814,673	15,246,433	12.2%
Lottery	12,556,369	12,979,955	423,586	3.4%
Net Contractor's Excise Tax	15,342,214	18,041,434	2,699,220	17.6%
Insurance Company Tax	19,912,798	16,362,971	<b>(3,549,827)</b>	-17.8%
Unclaimed Property Receipts	<b>(3,430,312)</b>	<b>(2,024,146)</b>	1,406,165	-41.0%
Licenses, Permits, and Fees	1,023,598	608,375	<b>(415,222)</b>	-40.6%
Tobacco Taxes	5,437,780	5,108,802	<b>(328,978)</b>	-6.0%
Trust Funds	29,512,894	31,890,322	2,377,428	8.1%
Net Transfers In (excluding one-time)	8,442,988	7,662,177	<b>(780,811)</b>	-9.2%
Alcohol Beverage Tax	15,245	11,062	<b>(4,183)</b>	-27.4%
Bank Franchise Tax	53,030	53,876	846	1.6%
Charges for Goods and Services	572,047	727,596	155,549	27.2%
Telecommunications Tax	-	-	0	N/A
Severance Taxes	2,080,422	273,240	<b>(1,807,182)</b>	-86.9%
Investment Income and Interest	5,196	5,687	491	9.5%
Alcohol Beverage 2% Wholesale Tax	252,704	285,194	32,490	12.9%
<b>SUBTOTAL (ONGOING RECEIPTS)</b>	<b>\$ 216,345,213</b>	<b>\$ 231,801,217</b>	<b>\$ 15,456,005</b>	<b>7.1%</b>

## Ongoing State Sales and Use Tax (Excludes one-time receipts)



### FY2022

### FY2023



**Legislative Adopted FY2023 Estimate (Feb. 2022) vs. Actual Revenues  
JULY FY2023 Comparison**

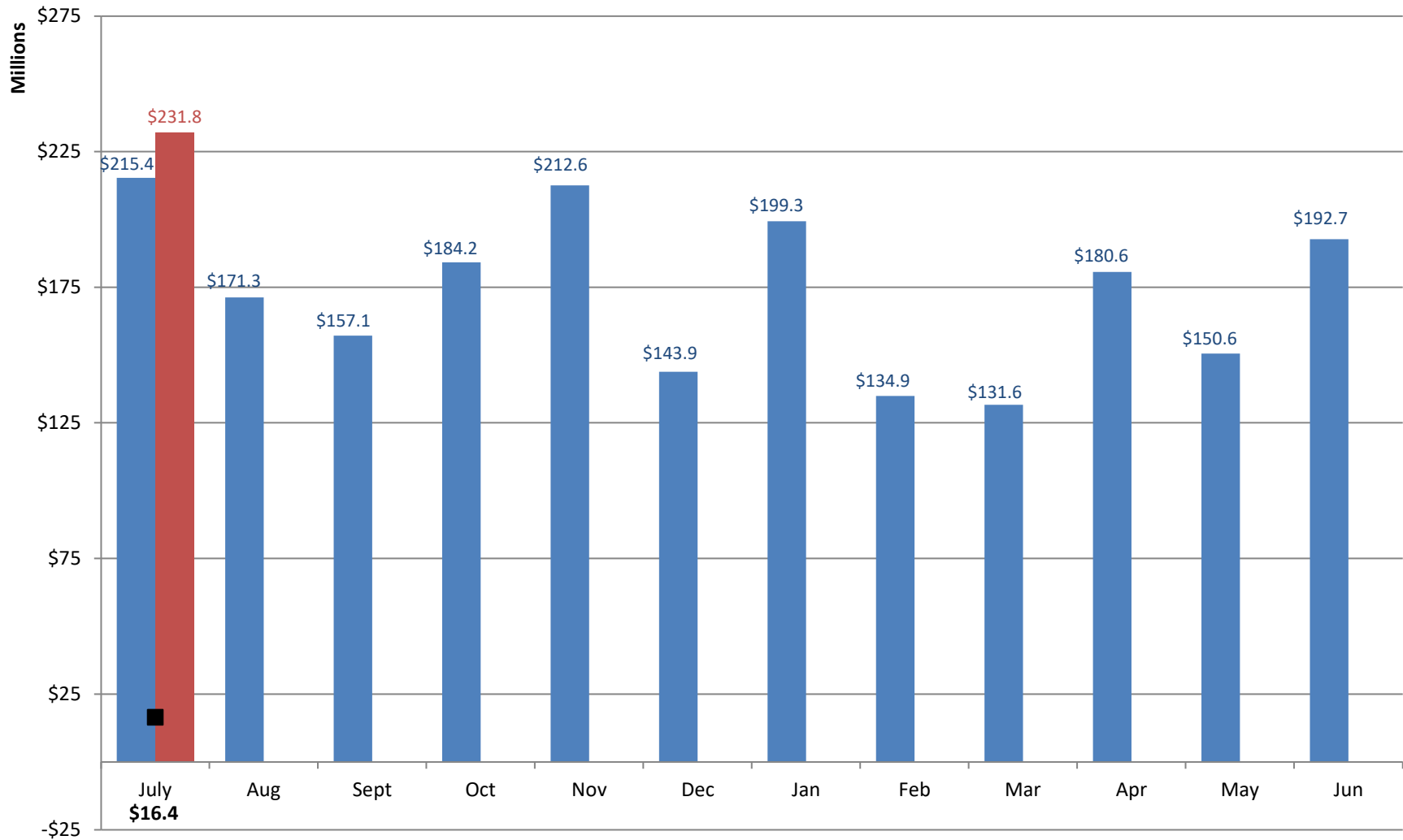
	<b>Leg Adopted JULY FY2023</b>	<b>Actual JULY FY2023</b>	<b>DOLLAR CHANGE</b>	<b>PERCENT CHANGE</b>
<b>ONGOING RECEIPTS</b>				
Net Sales and Use Tax (excl. cost of admin)	121,631,958	139,814,673	18,182,716	14.9%
Lottery	12,364,860	12,979,955	615,095	5.0%
Net Contractor's Excise Tax	14,716,753	18,041,434	3,324,680	22.6%
Insurance Company Tax	18,275,901	16,362,971	(1,912,930)	-10.5%
Unclaimed Property Receipts	(1,341,965)	(2,024,146)	(682,182)	50.8%
Licenses, Permits, and Fees	884,721	608,375	(276,345)	-31.2%
Tobacco Taxes	5,813,506	5,108,802	(704,704)	-12.1%
Trust Funds	31,890,322	31,890,322	0	0.0%
Net Transfers In (excluding one-time)	7,998,149	7,662,177	(335,973)	-4.2%
Alcohol Beverage Tax	18,134	11,062	(7,072)	-39.0%
Bank Franchise Tax	61,217	53,876	(7,340)	-12.0%
Charges for Goods and Services	1,340,902	727,596	(613,305)	-45.7%
Telecommunications Tax	-	-	0	N/A
Severance Taxes	1,461,831	273,240	(1,188,590)	-81.3%
Investment Income and Interest	7,439	5,687	(1,752)	-23.6%
Alcohol Beverage 2% Wholesale Tax	233,890	285,194	51,304	21.9%
<b>TOTAL (ONGOING RECEIPTS)</b>	<b>\$ 215,357,617</b>	<b>\$ 231,801,217</b>	<b>\$ 16,443,601</b>	<b>7.6%</b>

**Legislative Adopted FY2023 Estimate (Feb. 2022) vs. Actual Revenues  
Year-to-Date Through JULY FY2023 Comparison**

	<b>Leg. Adopted JULY YTD FY2023</b>	<b>Actual JULY YTD FY2023</b>	<b>DOLLAR CHANGE</b>	<b>YTD % Chg. Actual/Adopt Comparison</b>
<b>ONGOING RECEIPTS</b>				
Net Sales and Use Tax (excl. cost of admin)	121,631,958	139,814,673	18,182,716	14.9%
Lottery	12,364,860	12,979,955	615,095	5.0%
Net Contractor's Excise Tax	14,716,753	18,041,434	3,324,680	22.6%
Insurance Company Tax	18,275,901	16,362,971	(1,912,930)	-10.5%
Unclaimed Property Receipts	(1,341,965)	(2,024,146)	(682,182)	50.8%
Licenses, Permits, and Fees	884,721	608,375	(276,345)	-31.2%
Tobacco Taxes	5,813,506	5,108,802	(704,704)	-12.1%
Trust Funds	31,890,322	31,890,322	0	0.0%
Net Transfers In (excluding one-time)	7,998,149	7,662,177	(335,973)	-4.2%
Alcohol Beverage Tax	18,134	11,062	(7,072)	-39.0%
Bank Franchise Tax	61,217	53,876	(7,340)	-12.0%
Charges for Goods and Services	1,340,902	727,596	(613,305)	-45.7%
Telecommunications Tax	-	-	0	N/A
Severance Taxes	1,461,831	273,240	(1,188,590)	-81.3%
Investment Income and Interest	7,439	5,687	(1,752)	-23.6%
Alcohol Beverage 2% Wholesale Tax	233,890	285,194	51,304	21.9%
<b>SUBTOTAL (ONGOING RECEIPTS)</b>	<b>\$ 215,357,617</b>	<b>\$ 231,801,217</b>	<b>\$ 16,443,601</b>	<b>7.6%</b>

# Adopted FY2023 vs. Actual FY2023 Ongoing Receipts

■ Adopted FY2023 Receipts    
 ■ Actual FY2023 Receipts    
 ■ Actual vs. Adopted



Through 1 month, total actual ongoing receipts were \$16.4 million MORE than the Adopted FY2023 estimate.