

**Actual Revenue FY2022 vs. Actual Revenue FY2023
DECEMBER FY2023 Comparison**

	Actual DECEMBER FY2022	Actual DECEMBER FY2023	DOLLAR CHANGE	PERCENT CHANGE
ONGOING RECEIPTS				
Net Sales and Use Tax (excl. cost of admin)	109,941,667	116,705,574	6,763,907	6.2%
Lottery	13,186,360	12,790,747	(395,613)	-3.0%
Net Contractor's Excise Tax	13,223,938	16,851,669	3,627,731	27.4%
Insurance Company Tax	1,134,472	1,294,781	160,309	14.1%
Unclaimed Property Receipts*	5,762,026	(970,224)	(6,732,250)	N/A
Licenses, Permits, and Fees	1,291,378	962,661	(328,717)	-25.5%
Tobacco Taxes	5,160,048	3,567,896	(1,592,152)	-30.9%
Trust Funds	-	-	0	N/A
Net Transfers In (excluding one-time)	682,153	613,083	(69,070)	-10.1%
Alcohol Beverage Tax	9,457	8,369	(1,088)	-11.5%
Bank Franchise Tax	2,066,902	905,533	(1,161,368)	-56.2%
Charges for Goods and Services	962,413	872,585	(89,829)	-9.3%
Telecommunications Tax	226,588	187,349	(39,239)	-17.3%
Severance Taxes	6,105	-	(6,105)	-100.0%
Investment Income and Interest	2,805	711	(2,094)	-74.6%
Alcohol Beverage 2% Wholesale Tax	253,302	287,273	33,970	13.4%
SUBTOTAL (ONGOING RECEIPTS)	\$ 153,909,616	\$ 154,078,007	\$ 168,391	0.1%
ONE-TIME RECEIPTS				
Bank Franchise Tax Prior Year Revenue	-	141,410	141,410	N/A
SUBTOTAL (ONE-TIME RECEIPTS)	\$ 0	\$ 141,410	\$ 141,410	N/A
GRAND TOTAL	\$ 153,909,616	\$ 154,219,417	\$ 309,801	0.2%

NOTES

* The decrease in Unclaimed Property Receipts is partially due to timing of receipts to the general fund in FY2022.

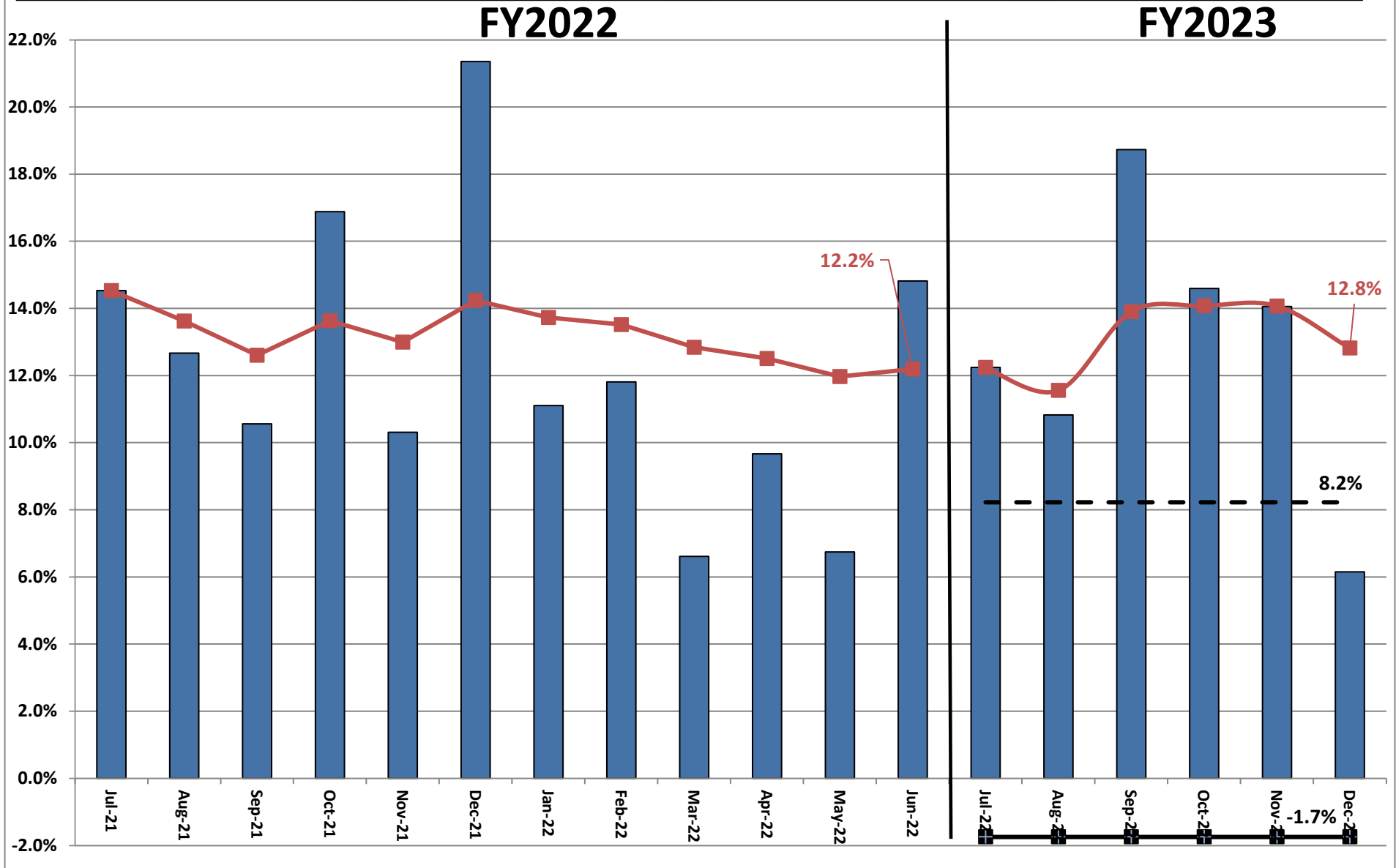
**Actual Revenue FY2022 vs. Actual Revenue FY2023
Year-To-Date Through DECEMBER FY2023 Comparison**

	Actual DECEMBER FY2022	Actual DECEMBER FY2023	DOLLAR CHANGE	YTD GROWTH OVER FY2022
ONGOING RECEIPTS				
Net Sales and Use Tax (excl. cost of admin)	694,821,313	783,891,386	89,070,073	12.8%
Lottery*	73,842,420	85,150,601	11,308,181	15.3%
Net Contractor's Excise Tax	85,807,304	107,610,037	21,802,733	25.4%
Insurance Company Tax	45,132,253	47,872,468	2,740,216	6.1%
Unclaimed Property Receipts	70,031,598	86,287,470	16,255,872	23.2%
Licenses, Permits, and Fees	16,666,053	15,890,220	(775,833)	-4.7%
Tobacco Taxes	28,942,988	26,433,944	(2,509,045)	-8.7%
Trust Funds	29,512,894	31,890,322	2,377,428	8.1%
Net Transfers In (excluding one-time)	13,691,007	12,452,937	(1,238,069)	-9.0%
Alcohol Beverage Tax	2,550,694	2,494,270	(56,423)	-2.2%
Bank Franchise Tax	3,839,941	4,277,918	437,977	11.4%
Charges for Goods and Services	6,031,107	6,130,379	99,272	1.6%
Telecommunications Tax	1,188,537	1,026,627	(161,910)	-13.6%
Severance Taxes	5,079,192	3,239,156	(1,840,037)	-36.2%
Investment Income and Interest	19,470,089	13,750,805	(5,719,284)	-29.4%
Alcohol Beverage 2% Wholesale Tax	1,470,456	1,516,662	46,206	3.1%
SUBTOTAL (ONGOING RECEIPTS)	\$ 1,098,077,845	\$ 1,229,915,201	\$ 131,837,357	12.0%
ONE-TIME RECEIPTS				
Bank Franchise Tax Prior Year Revenue	-	183,423	183,423	N/A
One-Time Sales and Use Tax	28,305,843	-	(28,305,843)	-100.0%
SUBTOTAL (ONE-TIME RECEIPTS)	\$ 28,305,843	\$ 183,423	\$ (28,122,421)	-99.4%
GRAND TOTAL	\$ 1,126,383,688	\$ 1,230,098,624	\$ 103,714,936	9.2%

NOTES

* The increase in Lottery is partially due to timing of receipts to the general fund in FY2022.

Ongoing State Sales and Use Tax (Excludes one-time receipts)



**Legislative Adopted FY2023 Estimate (Feb. 2022) vs. Actual Revenues
DECEMBER FY2023 Comparison**

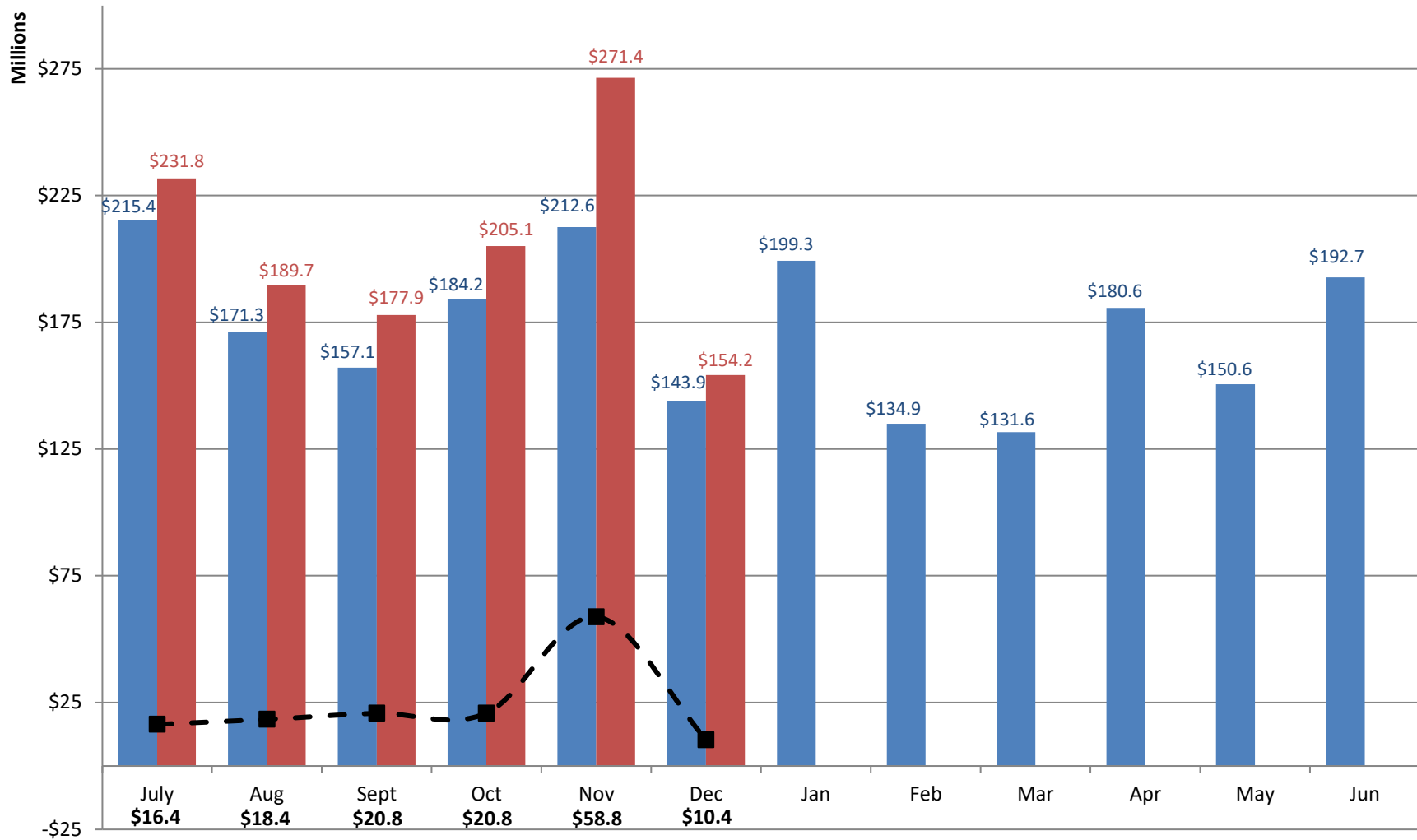
	Leg Adopted DECEMBER FY2023	Actual DECEMBER FY2023	DOLLAR CHANGE	PERCENT CHANGE
ONGOING RECEIPTS				
Net Sales and Use Tax (excl. cost of admin)	106,259,382	116,705,574	10,446,192	9.8%
Lottery	12,967,288	12,790,747	(176,541)	-1.4%
Net Contractor's Excise Tax	13,034,661	16,851,669	3,817,008	29.3%
Insurance Company Tax	1,977,041	1,294,781	(682,260)	-34.5%
Unclaimed Property Receipts	(667,556)	(970,224)	(302,668)	N/A
Licenses, Permits, and Fees	2,700,098	962,661	(1,737,436)	-64.3%
Tobacco Taxes	4,474,409	3,567,896	(906,513)	-20.3%
Trust Funds	-	-	0	N/A
Net Transfers In (excluding one-time)	875,891	613,083	(262,808)	-30.0%
Alcohol Beverage Tax	7,014	8,369	1,355	19.3%
Bank Franchise Tax	641,325	905,533	264,208	41.2%
Charges for Goods and Services	1,071,333	872,585	(198,749)	-18.6%
Telecommunications Tax	208,642	187,349	(21,293)	-10.2%
Severance Taxes	1,960	-	(1,960)	-100.0%
Investment Income and Interest	18,389	711	(17,678)	-96.1%
Alcohol Beverage 2% Wholesale Tax	299,286	287,273	(12,014)	-4.0%
TOTAL (ONGOING RECEIPTS)	\$ 143,869,164	\$ 154,078,007	\$ 10,208,843	7.1%
ONE-TIME RECEIPTS				
Bank Franchise Tax Prior Year Revenue	-	141,410	141,410	N/A
SUBTOTAL (ONE-TIME RECEIPTS)	\$ 0	\$ 141,410	\$ 141,410	N/A
GRAND TOTAL	\$ 143,869,164	\$ 154,219,417	\$ 10,350,253	7.2%

**Legislative Adopted FY2023 Estimate (Feb. 2022) vs. Actual Revenues
Year-to-Date Through DECEMBER FY2023 Comparison**

	Leg. Adopted DECEMBER YTD FY2023	Actual DECEMBER YTD FY2023	DOLLAR CHANGE	YTD % Chg. Actual/Adopt Comparison
ONGOING RECEIPTS				
Net Sales and Use Tax (excl. cost of admin)	691,663,307	783,891,386	92,228,078	13.3%
Lottery	77,001,555	85,150,601	8,149,046	10.6%
Net Contractor's Excise Tax	88,181,850	107,610,037	19,428,187	22.0%
Insurance Company Tax	46,770,068	47,872,468	1,102,401	2.4%
Unclaimed Property Receipts	54,792,967	86,287,470	31,494,504	57.5%
Licenses, Permits, and Fees	17,291,130	15,890,220	(1,400,910)	-8.1%
Tobacco Taxes	29,313,739	26,433,944	(2,879,796)	-9.8%
Trust Funds	31,890,322	31,890,322	0	0.0%
Net Transfers In (excluding one-time)	12,877,530	12,452,937	(424,592)	-3.3%
Alcohol Beverage Tax	2,521,869	2,494,270	(27,598)	-1.1%
Bank Franchise Tax	1,907,868	4,277,918	2,370,050	124.2%
Charges for Goods and Services	7,660,569	6,130,379	(1,530,190)	-20.0%
Telecommunications Tax	1,084,983	1,026,627	(58,355)	-5.4%
Severance Taxes	4,393,746	3,239,156	(1,154,590)	-26.3%
Investment Income and Interest	15,653,092	13,750,805	(1,902,287)	-12.2%
Alcohol Beverage 2% Wholesale Tax	1,441,494	1,516,662	75,168	5.2%
SUBTOTAL (ONGOING RECEIPTS)	\$ 1,084,446,087	\$ 1,229,915,201	\$ 145,469,114	13.4%
ONE-TIME RECEIPTS				
Bank Franchise Tax Prior Year Revenue	-	183,423	183,423	N/A
SUBTOTAL (ONE-TIME RECEIPTS)	\$ 0	\$ 183,423	\$ 183,423	N/A
GRAND TOTAL	\$ 1,084,446,087	\$ 1,230,098,624	\$ 145,652,537	13.4%

Adopted FY2023 vs. Actual FY2023 Receipts

■ Adopted FY2023 Receipts
 ■ Actual FY2023 Receipts
 -■- Actual vs. Adopted



Through 6 months, total actual receipts were \$145.7 million MORE than the Adopted FY2023 estimate.

**Governor's Revised FY2023 Estimate (Nov. 2022) vs. Actual Revenues
DECEMBER FY2023 Comparison**

	Gov. Revised DECEMBER FY2023	Actual DECEMBER FY2023	DOLLAR CHANGE	MTD % Chg. Actual/Revised Comparison
ONGOING RECEIPTS				
Net Sales and Use Tax (excl. cost of admin)	114,661,370	116,705,574	2,044,204	1.8%
Lottery	13,242,333	12,790,747	(451,586)	-3.4%
Net Contractor's Excise Tax	14,774,541	16,851,669	2,077,128	14.1%
Insurance Company Tax	2,151,308	1,294,781	(856,527)	-39.8%
Unclaimed Property Receipts	(2,384,667)	(970,224)	1,414,442	-59.3%
Licenses, Permits, and Fees	2,830,362	962,661	(1,867,701)	-66.0%
Tobacco Taxes	4,279,478	3,567,896	(711,582)	-16.6%
Trust Funds	-	-	0	N/A
Net Transfers In (excluding one-time)	1,009,987	613,083	(396,904)	-39.3%
Alcohol Beverage Tax	7,284	8,369	1,085	14.9%
Bank Franchise Tax	902,071	905,533	3,462	0.4%
Charges for Goods and Services	1,239,320	872,585	(366,735)	-29.6%
Telecommunications Tax	191,787	187,349	(4,438)	-2.3%
Severance Taxes	2,785	-	(2,785)	-100.0%
Investment Income and Interest	9,052	711	(8,341)	-92.1%
Alcohol Beverage 2% Wholesale Tax	323,770	287,273	(36,498)	-11.3%
TOTAL (ONGOING RECEIPTS)	\$ 153,240,781	\$ 154,078,007	\$ 837,226	0.5%
ONE-TIME RECEIPTS				
Bank Franchise Tax Prior Year Revenue	-	141,410	141,410	N/A
SUBTOTAL (ONE-TIME RECEIPTS)	\$ 0	\$ 141,410	\$ 141,410	N/A
GRAND TOTAL	\$ 153,240,781	\$ 154,219,417	\$ 978,636	0.6%

**Governor's Revised FY2023 Estimate (Nov. 2022) vs. Actual Revenues
Year-To-Date Through DECEMBER FY2022 Comparison**

	Gov. Revised DECEMBER YTD FY2023	Actual DECEMBER YTD FY2023	DOLLAR CHANGE	YTD % Chg. Actual/Revised Comparison
ONGOING RECEIPTS				
Net Sales and Use Tax (excl. cost of admin)	776,564,163	783,891,386	7,327,222	0.9%
Lottery	85,460,969	85,150,601	(310,368)	-0.4%
Net Contractor's Excise Tax	105,018,659	107,610,037	2,591,378	2.5%
Insurance Company Tax	50,344,065	47,872,468	(2,471,597)	-4.9%
Unclaimed Property Receipts	82,541,980	86,287,470	3,745,490	4.5%
Licenses, Permits, and Fees	17,588,939	15,890,220	(1,698,719)	-9.7%
Tobacco Taxes	27,304,630	26,433,944	(870,687)	-3.2%
Trust Funds	31,890,322	31,890,322	0	0.0%
Net Transfers In (excluding one-time)	12,777,771	12,452,937	(324,834)	-2.5%
Alcohol Beverage Tax	2,496,291	2,494,270	(2,021)	-0.1%
Bank Franchise Tax	2,847,858	4,277,918	1,430,059	50.2%
Charges for Goods and Services	6,621,122	6,130,379	(490,743)	-7.4%
Telecommunications Tax	1,025,924	1,026,627	703	0.1%
Severance Taxes	2,872,142	3,239,156	367,014	12.8%
Investment Income and Interest	13,777,082	13,750,805	(26,277)	-0.2%
Alcohol Beverage 2% Wholesale Tax	1,560,700	1,516,662	(44,039)	-2.8%
SUBTOTAL (ONGOING RECEIPTS)	\$ 1,220,692,618	\$ 1,229,915,201	\$ 9,222,583	0.8%
ONE-TIME RECEIPTS				
Bank Franchise Tax Prior Year Revenue	14,625	183,423	168,798	1154.2%
SUBTOTAL (ONE-TIME RECEIPTS)	\$ 14,625	\$ 183,423	\$ 168,798	1154.2%
GRAND TOTAL	\$ 1,220,707,243	\$ 1,230,098,624	\$ 9,391,381	0.8%