

**Actual Revenue FY2023 vs. Actual Revenue FY2024
AUGUST FY2024 Comparison**

	Actual AUGUST FY2023	Actual AUGUST FY2024	DOLLAR CHANGE	PERCENT CHANGE
ONGOING RECEIPTS				
Net Sales and Use Tax (excl. cost of admin)	128,534,039	125,281,422	(3,252,617)	-2.5%
Lottery	13,581,027	13,428,924	(152,103)	-1.1%
Net Contractor's Excise Tax	16,767,465	18,708,206	1,940,742	11.6%
Insurance Company Tax	6,672,640	11,320,250	4,647,610	69.7%
Unclaimed Property Receipts	-	(3,559,769)	(3,559,769)	N/A
Licenses, Permits, and Fees	1,096,843	156,898	(939,945)	-85.7%
Tobacco Taxes	4,470,116	4,653,572	183,455	4.1%
Trust Funds	-	-	0	N/A
Net Transfers In (excluding one-time)	1,234,479	1,723,466	488,987	39.6%
Alcohol Beverage Tax	14,496	11,611	(2,885)	-19.9%
Bank Franchise Tax	428,802	6,756	(422,046)	-98.4%
Charges for Goods and Services	1,113,368	925,378	(187,990)	-16.9%
Telecommunications Tax	206,636	198,211	(8,425)	-4.1%
Severance Taxes	1,560,476	2,942,619	1,382,143	88.6%
Investment Income and Interest	13,732,834	48,957,301	35,224,467	256.5%
Alcohol Beverage 2% Wholesale Tax	265,538	509,635	244,097	91.9%
SUBTOTAL (ONGOING RECEIPTS)	\$ 189,678,759	\$ 225,264,480	\$ 35,585,721	18.8%
ONE-TIME RECEIPTS				
Bank Franchise Tax Prior Year Revenue	14,625	-	(14,625)	-100.0%
SUBTOTAL (ONE-TIME RECEIPTS)	\$ 14,625	\$ 0	\$ (14,625)	N/A
GRAND TOTAL	\$ 189,693,384	\$ 225,264,480	\$ 35,571,096	18.8%

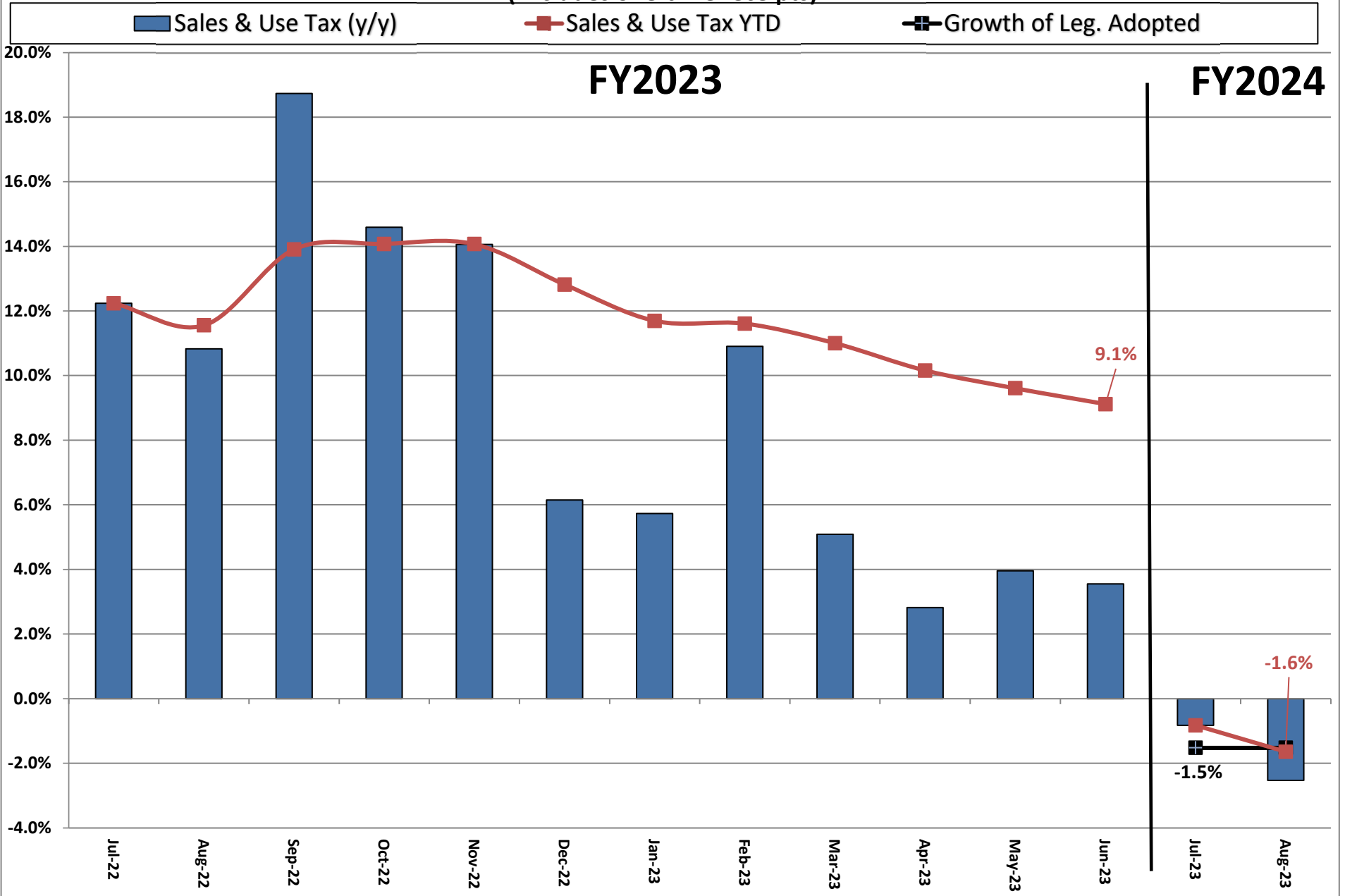
**Actual Revenue FY2023 vs. Actual Revenue FY2024
Year-To-Date Through AUGUST FY2024 Comparison**

	Actual AUGUST YTD FY2023	Actual AUGUST YTD FY2024	DOLLAR CHANGE	YTD GROWTH OVER FY2022
ONGOING RECEIPTS				
Net Sales and Use Tax (excl. cost of admin)	268,348,712	263,946,308	(4,402,404)	-1.6%
Lottery	26,560,982	26,944,471	383,489	1.4%
Net Contractor's Excise Tax	34,808,898	40,461,409	5,652,511	16.2%
Insurance Company Tax	23,035,611	25,301,344	2,265,733	9.8%
Unclaimed Property Receipts	(2,024,146)	(5,877,183)	(3,853,036)	N/A
Licenses, Permits, and Fees	1,705,218	1,007,665	(697,554)	-40.9%
Tobacco Taxes	9,578,918	8,949,582	(629,336)	-6.6%
Trust Funds	31,890,322	33,665,904	1,775,583	5.6%
Net Transfers In (excluding one-time)	8,896,656	9,614,092	717,436	8.1%
Alcohol Beverage Tax	25,558	30,742	5,184	20.3%
Bank Franchise Tax	482,678	97,974	(384,704)	-79.7%
Charges for Goods and Services	1,840,964	1,759,120	(81,844)	-4.4%
Telecommunications Tax	206,636	198,211	(8,425)	-4.1%
Severance Taxes	1,833,716	2,942,619	1,108,903	60.5%
Investment Income and Interest	13,738,521	48,959,850	35,221,329	256.4%
Alcohol Beverage 2% Wholesale Tax	550,732	509,635	(41,097)	-7.5%
SUBTOTAL (ONGOING RECEIPTS)	\$ 421,479,976	\$ 458,511,743	\$ 37,031,767	8.8%
ONE-TIME RECEIPTS				
One-Time Sales and Use Tax*	-	9,726,426	9,726,426	N/A
Bank Franchise Tax Prior Year Revenue	14,625	135,680	121,055	N/A
SUBTOTAL (ONE-TIME RECEIPTS)	\$ 14,625	\$ 9,862,106	\$ 121,055	N/A
GRAND TOTAL	\$ 421,494,601	\$ 468,373,849	\$ 46,879,247	11.1%

NOTES

* The state sales tax rate was decreased from 4.5% to 4.2% on July 1st. However, July sales tax collections were from June sales. The additional 0.3% was noted as a one-time receipt in July.

Ongoing State Sales and Use Tax (Excludes one-time receipts)



**Legislative Adopted FY2024 Estimate (Feb. 2023) vs. Actual Revenues
AUGUST FY2024 Comparison**

	Leg. Adopted AUGUST FY2024	Actual AUGUST FY2024	DOLLAR CHANGE	PERCENT CHANGE
ONGOING RECEIPTS				
Net Sales and Use Tax (excl. cost of admin)	128,104,411	125,281,422	(2,822,990)	-2.2%
Lottery	13,937,177	13,428,924	(508,253)	-3.6%
Net Contractor's Excise Tax	18,003,642	18,708,206	704,565	3.9%
Insurance Company Tax	4,894,488	11,320,250	6,425,761	131.3%
Unclaimed Property Receipts	(1,894,794)	(3,559,769)	(1,664,975)	N/A
Licenses, Permits, and Fees	918,732	156,898	(761,834)	-82.9%
Tobacco Taxes	5,085,575	4,653,572	(432,003)	-8.5%
Trust Funds	-	-	0	N/A
Net Transfers In (excluding one-time)	914,615	1,723,466	808,851	88.4%
Alcohol Beverage Tax	6,565	11,611	5,046	76.9%
Bank Franchise Tax	19,382	6,756	(12,626)	-65.1%
Charges for Goods and Services	1,026,161	925,378	(100,783)	-9.8%
Telecommunications Tax	175,536	198,211	22,675	12.9%
Severance Taxes	554,630	2,942,619	2,387,989	430.6%
Investment Income and Interest	19,980,686	48,957,301	28,976,616	145.0%
Alcohol Beverage 2% Wholesale Tax	254,460	509,635	255,175	100.3%
TOTAL (ONGOING RECEIPTS)	\$ 191,981,267	\$ 225,264,480	\$ 33,283,213	17.3%
GRAND TOTAL	\$ 191,981,267	\$ 225,264,480	\$ 33,283,213	17.3%

**Legislative Adopted FY2024 Estimate (Feb. 2023) vs. Actual Revenues
Year-to-Date Through AUGUST FY2024 Comparison**

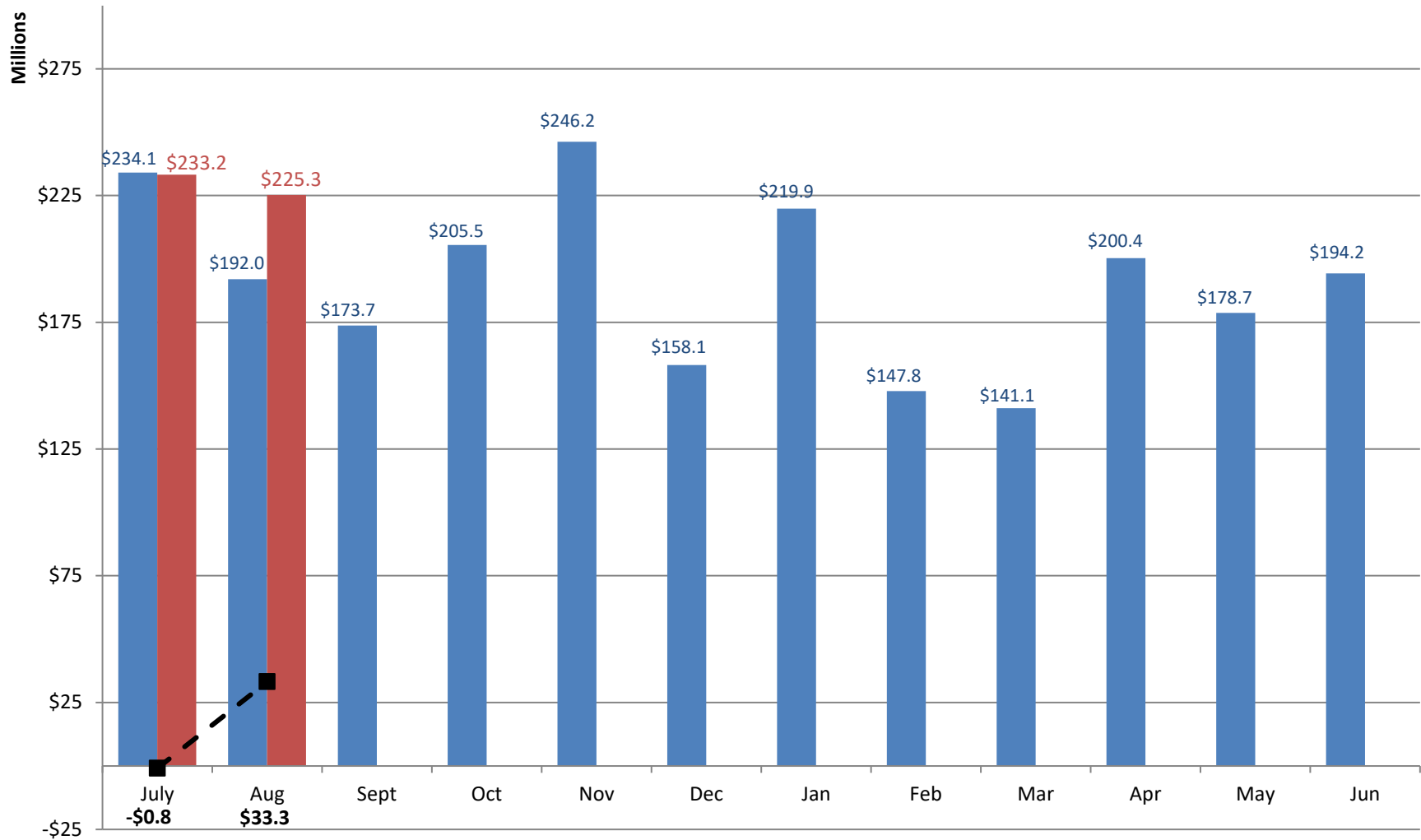
	Leg. Adopted AUGUST YTD FY2024	Actual AUGUST YTD FY2024	DOLLAR CHANGE	YTD % Chg. Actual/Adopt Comparison
ONGOING RECEIPTS				
Net Sales and Use Tax (excl. cost of admin)	261,112,359	263,946,308	2,833,950	1.1%
Lottery	27,561,143	26,944,471	(616,672)	-2.2%
Net Contractor's Excise Tax	36,811,806	40,461,409	3,649,603	9.9%
Insurance Company Tax	24,420,549	25,301,344	880,794	3.6%
Unclaimed Property Receipts	(3,525,864)	(5,877,183)	(2,351,319)	N/A
Licenses, Permits, and Fees	1,806,543	1,007,665	(798,878)	-44.2%
Tobacco Taxes	10,194,844	8,949,582	(1,245,262)	-12.2%
Trust Funds	33,665,904	33,665,904	0	0.0%
Net Transfers In (excluding one-time)	9,030,285	9,614,092	583,807	6.5%
Alcohol Beverage Tax	24,589	30,742	6,152	25.0%
Bank Franchise Tax	101,287	97,974	(3,313)	-3.3%
Charges for Goods and Services	2,220,087	1,759,120	(460,967)	-20.8%
Telecommunications Tax	175,536	198,211	22,675	12.9%
Severance Taxes	1,956,153	2,942,619	986,466	50.4%
Investment Income and Interest	19,987,354	48,959,850	28,972,496	145.0%
Alcohol Beverage 2% Wholesale Tax	525,911	509,635	(16,276)	-3.1%
SUBTOTAL (ONGOING RECEIPTS)	\$ 426,068,488	\$ 458,511,743	\$ 32,443,255	7.6%
ONE-TIME RECEIPTS				
One-Time Sales and Use Tax*	-	9,726,426	9,726,426	N/A
Bank Franchise Tax Prior Year Revenue	-	135,680	135,680	N/A
SUBTOTAL (ONE-TIME RECEIPTS)	\$ 0	\$ 9,862,106	\$ 9,862,106	N/A
GRAND TOTAL	\$ 426,068,488	\$ 468,373,849	\$ 42,305,361	9.9%

NOTES

* The state sales tax rate was decreased from 4.5% to 4.2% on July 1st. However, July sales tax collections were from June sales. The additional 0.3% was noted as a one-time receipt in July.

Legislative Adopted FY2024 vs. Actual FY2024 Receipts

■ Leg. Adopted FY2024 Receipts
 ■ Actual FY2024 Receipts
 -■- Actual vs. Adopted



Through 2 months, total ongoing receipts were \$32.4 million MORE than the Legislative Adopted FY2024 estimate.