

**Actual Revenue FY2023 vs. Actual Revenue FY2024  
DECEMBER FY2024 Comparison**

	<b>Actual DECEMBER FY2023</b>	<b>Actual DECEMBER FY2024</b>	<b>DOLLAR CHANGE</b>	<b>PERCENT CHANGE</b>
<b>ONGOING RECEIPTS</b>				
Net Sales and Use Tax (excl. cost of admin)	116,705,574	114,209,646	(2,495,929)	-2.1%
Lottery	12,790,747	13,589,650	798,903	6.2%
Net Contractor's Excise Tax	16,851,669	18,648,302	1,796,633	10.7%
Insurance Company Tax	1,294,781	517,854	(776,927)	-60.0%
Unclaimed Property Receipts	(970,224)	6,497,560	7,467,784	N/A
Licenses, Permits, and Fees	962,661	328,343	(634,318)	-65.9%
Tobacco Taxes	3,567,896	3,530,411	(37,485)	-1.1%
Trust Funds	-	-	0	N/A
Net Transfers In (excluding one-time)	613,083	1,139,108	526,025	85.8%
Alcohol Beverage Tax	8,369	13,862	5,494	65.6%
Bank Franchise Tax	905,533	63,551	(841,982)	-93.0%
Charges for Goods and Services	872,585	920,168	47,583	5.5%
Telecommunications Tax	187,349	178,207	(9,142)	-4.9%
Severance Taxes	-	1,296	1,296	N/A
Investment Income and Interest	711	2,514	1,803	253.6%
Alcohol Beverage 2% Wholesale Tax	287,273	328,670	41,397	14.4%
<b>SUBTOTAL (ONGOING RECEIPTS)</b>	<b>\$ 154,078,007</b>	<b>\$ 159,969,141</b>	<b>\$ 5,891,135</b>	<b>3.8%</b>
<b>ONE-TIME RECEIPTS</b>				
Bank Franchise Tax Prior Year Revenue	141,410	(1,037,677)	(1,179,087)	-833.8%
<b>SUBTOTAL (ONE-TIME RECEIPTS)</b>	<b>\$ 141,410</b>	<b>\$ (1,037,677)</b>	<b>\$ (1,179,087)</b>	<b>-833.8%</b>
<b>GRAND TOTAL</b>	<b>\$ 154,219,417</b>	<b>\$ 158,931,464</b>	<b>\$ 4,712,048</b>	<b>3.1%</b>

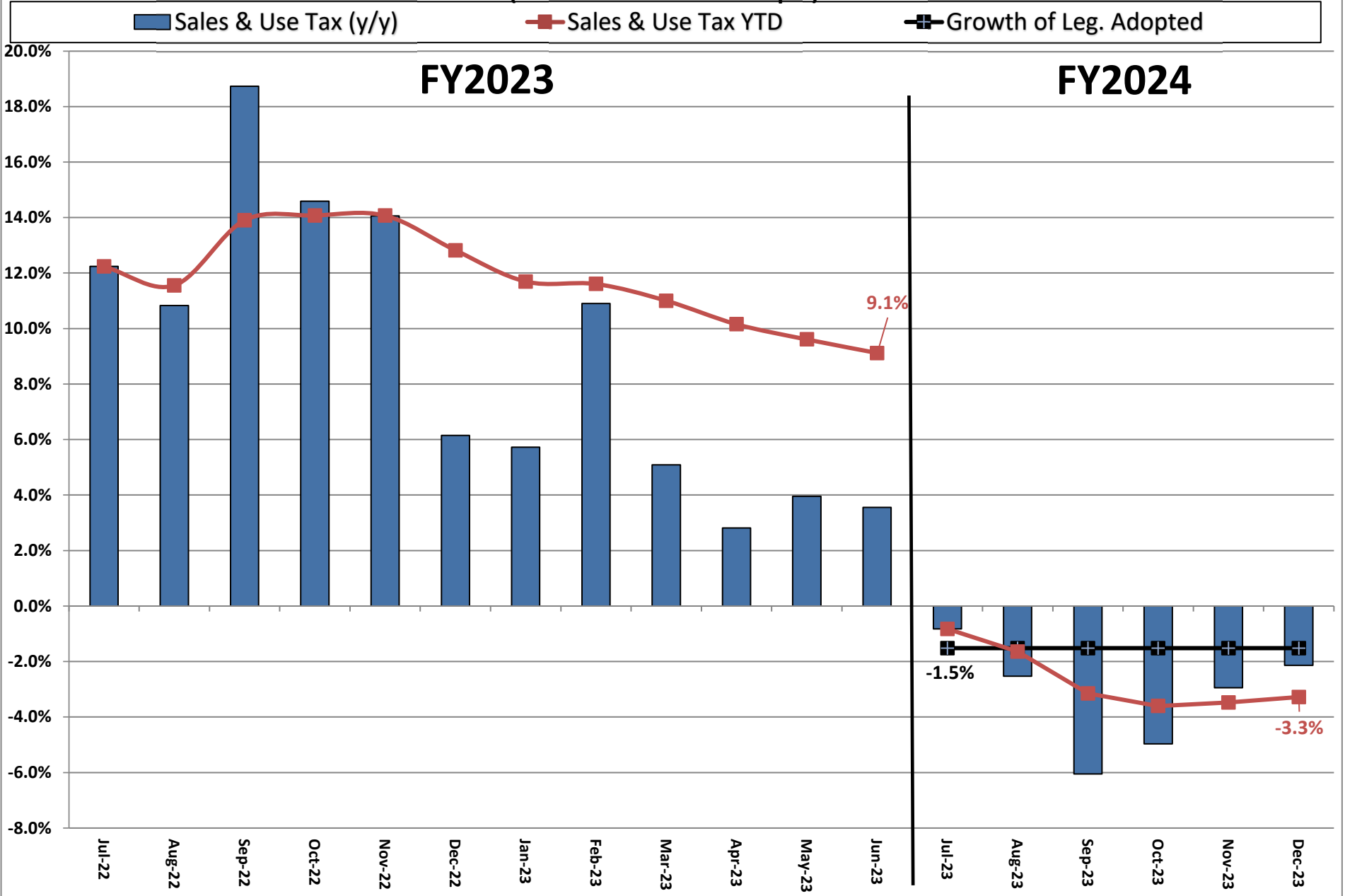
**Actual Revenue FY2023 vs. Actual Revenue FY2024  
Year-To-Date Through DECEMBER FY2024 Comparison**

	<b>Actual DECEMBER YTD FY2023</b>	<b>Actual DECEMBER YTD FY2024</b>	<b>DOLLAR CHANGE</b>	<b>YTD GROWTH OVER FY2023</b>
<b>ONGOING RECEIPTS</b>				
Net Sales and Use Tax (excl. cost of admin)	783,891,386	758,212,929	(25,678,457)	-3.3%
Lottery	85,150,601	86,592,573	1,441,972	1.7%
Net Contractor's Excise Tax	107,610,037	123,668,005	16,057,968	14.9%
Insurance Company Tax	47,872,468	51,165,667	3,293,199	6.9%
Unclaimed Property Receipts	86,287,470	150,139,246	63,851,776	74.0%
Licenses, Permits, and Fees	15,890,220	14,286,051	(1,604,169)	-10.1%
Tobacco Taxes	26,433,944	24,761,741	(1,672,203)	-6.3%
Trust Funds	31,890,322	33,665,904	1,775,583	5.6%
Net Transfers In (excluding one-time)	12,452,937	14,796,645	2,343,707	18.8%
Alcohol Beverage Tax	2,494,270	2,527,448	33,178	1.3%
Bank Franchise Tax	4,277,918	3,428,481	(849,437)	-19.9%
Charges for Goods and Services	6,130,379	6,100,069	(30,310)	-0.5%
Telecommunications Tax	1,026,627	925,446	(101,181)	-9.9%
Severance Taxes	3,239,156	5,311,122	2,071,966	64.0%
Investment Income and Interest	13,750,805	48,968,331	35,217,526	256.1%
Alcohol Beverage 2% Wholesale Tax	1,516,662	1,631,416	114,754	7.6%
<b>SUBTOTAL (ONGOING RECEIPTS)</b>	<b>\$ 1,229,915,201</b>	<b>\$ 1,326,181,074</b>	<b>\$ 96,265,873</b>	<b>7.8%</b>
<b>ONE-TIME RECEIPTS</b>				
One-Time Sales and Use Tax*	-	9,726,426	9,726,426	N/A
Bank Franchise Tax Prior Year Revenue	183,423	727,097	543,674	296.4%
<b>SUBTOTAL (ONE-TIME RECEIPTS)</b>	<b>\$ 183,423</b>	<b>\$ 10,453,523</b>	<b>\$ 543,674</b>	<b>5599.1%</b>
<b>GRAND TOTAL</b>	<b>\$ 1,230,098,624</b>	<b>\$ 1,336,634,596</b>	<b>\$ 106,535,973</b>	<b>8.7%</b>

**NOTES**

\* The state sales tax rate was decreased from 4.5% to 4.2% on July 1st. However, July sales tax collections were from June sales. The additional 0.3% was noted as a one-time receipt in July.

# Ongoing State Sales and Use Tax (Excludes one-time receipts)



**Legislative Adopted FY2024 Estimate (Feb. 2023) vs. Actual Revenues  
DECEMBER FY2024 Comparison**

	<b>Leg. Adopted DECEMBER FY2024</b>	<b>Actual DECEMBER FY2024</b>	<b>DOLLAR CHANGE</b>	<b>PERCENT CHANGE</b>
<b>ONGOING RECEIPTS</b>				
Net Sales and Use Tax (excl. cost of admin)	116,377,821	114,209,646	(2,168,176)	-1.9%
Lottery	14,140,128	13,589,650	(550,478)	-3.9%
Net Contractor's Excise Tax	16,796,388	18,648,302	1,851,914	11.0%
Insurance Company Tax	1,206,174	517,854	(688,320)	-57.1%
Unclaimed Property Receipts	(811,370)	6,497,560	7,308,930	N/A
Licenses, Permits, and Fees	2,584,550	328,343	(2,256,207)	-87.3%
Tobacco Taxes	4,023,102	3,530,411	(492,691)	-12.2%
Trust Funds	-	-	0	N/A
Net Transfers In (excluding one-time)	778,677	1,139,108	360,431	46.3%
Alcohol Beverage Tax	7,345	13,862	6,518	88.7%
Bank Franchise Tax	858,065	63,551	(794,514)	-92.6%
Charges for Goods and Services	1,052,709	920,168	(132,542)	-12.6%
Telecommunications Tax	163,862	178,207	14,346	8.8%
Severance Taxes	1,805	1,296	(508)	-28.2%
Investment Income and Interest	18,521	2,514	(16,007)	-86.4%
Alcohol Beverage 2% Wholesale Tax	336,966	328,670	(8,297)	-2.5%
<b>TOTAL (ONGOING RECEIPTS)</b>	<b>\$ 157,534,743</b>	<b>\$ 159,969,141</b>	<b>\$ 2,434,399</b>	<b>1.5%</b>
<b>ONE-TIME RECEIPTS</b>				
Bank Franchise Tax Prior Year Revenue	-	(1,037,677)	(1,037,677)	N/A
<b>SUBTOTAL (ONE-TIME RECEIPTS)</b>	<b>\$ 0</b>	<b>\$ (1,037,677)</b>	<b>\$ (1,037,677)</b>	<b>N/A</b>
<b>GRAND TOTAL</b>	<b>\$ 157,534,743</b>	<b>\$ 158,931,464</b>	<b>\$ 1,396,722</b>	<b>0.9%</b>

**Legislative Adopted FY2024 Estimate (Feb. 2023) vs. Actual Revenues  
Year-to-Date Through DECEMBER FY2024 Comparison**

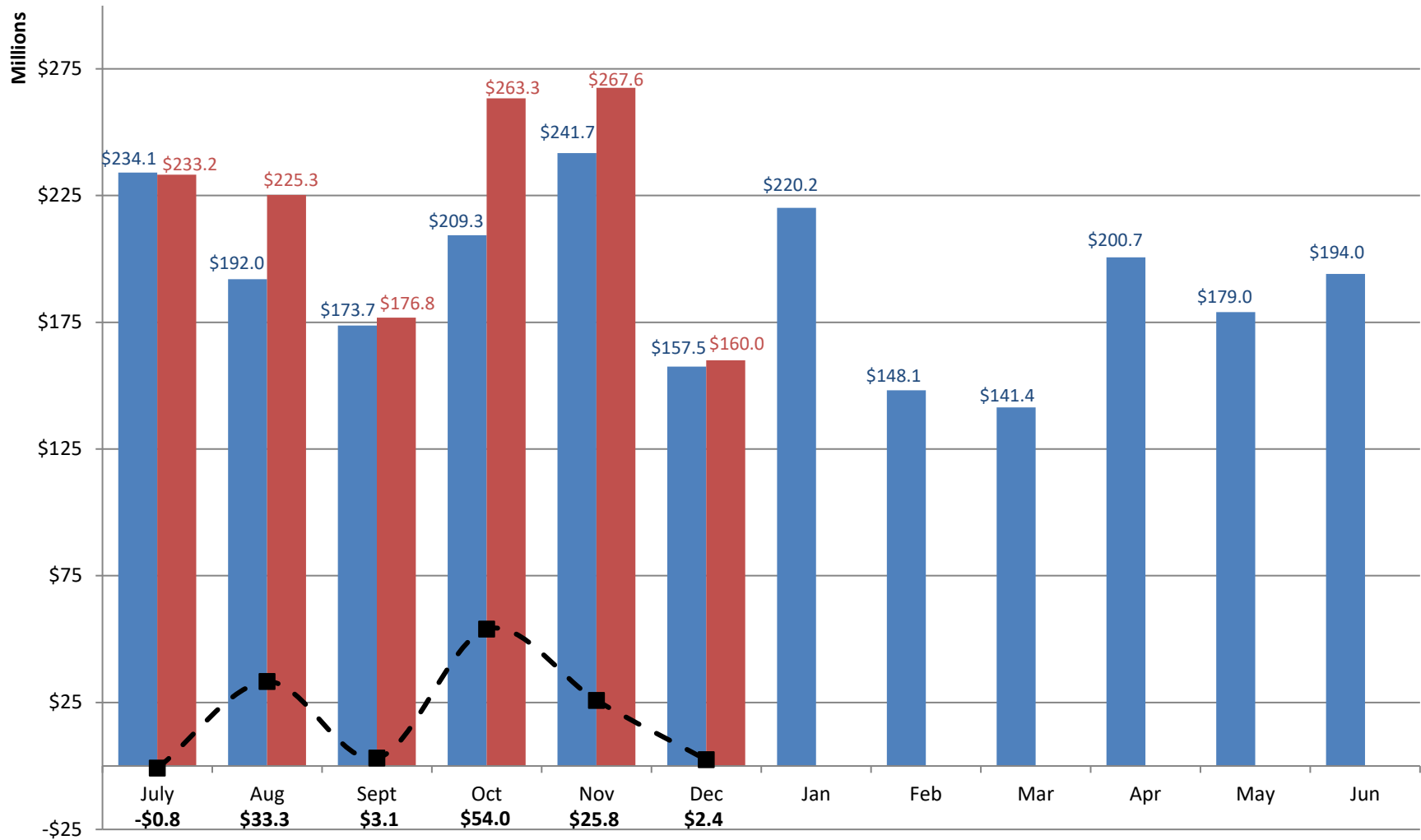
	<b>Leg. Adopted DECEMBER YTD FY2024</b>	<b>Actual DECEMBER YTD FY2024</b>	<b>DOLLAR CHANGE</b>	<b>YTD % Chg. Actual/Adopt Comparison</b>
<b>ONGOING RECEIPTS</b>				
Net Sales and Use Tax (excl. cost of admin)	757,848,342	758,212,929	364,587	0.0%
Lottery	88,161,825	86,592,573	(1,569,252)	-1.8%
Net Contractor's Excise Tax	112,619,345	123,668,005	11,048,660	9.8%
Insurance Company Tax	52,131,644	51,165,667	(965,977)	-1.9%
Unclaimed Property Receipts	66,597,258	150,139,246	83,541,988	125.4%
Licenses, Permits, and Fees	17,910,684	14,286,051	(3,624,633)	-20.2%
Tobacco Taxes	26,748,191	24,761,741	(1,986,450)	-7.4%
Trust Funds	33,665,904	33,665,904	0	0.0%
Net Transfers In (excluding one-time)	12,931,496	14,796,645	1,865,149	14.4%
Alcohol Beverage Tax	2,593,887	2,527,448	(66,439)	-2.6%
Bank Franchise Tax	2,552,644	3,428,481	875,837	34.3%
Charges for Goods and Services	7,389,060	6,100,069	(1,288,991)	-17.4%
Telecommunications Tax	853,766	925,446	71,680	8.4%
Severance Taxes	4,703,654	5,311,122	607,468	12.9%
Investment Income and Interest	20,040,997	48,968,331	28,927,334	144.3%
Alcohol Beverage 2% Wholesale Tax	1,640,763	1,631,416	(9,347)	-0.6%
<b>SUBTOTAL (ONGOING RECEIPTS)</b>	<b>\$ 1,208,389,460</b>	<b>\$ 1,326,181,074</b>	<b>\$ 117,791,614</b>	<b>9.7%</b>
<b>ONE-TIME RECEIPTS</b>				
One-Time Sales and Use Tax*	-	9,726,426	9,726,426	N/A
Bank Franchise Tax Prior Year Revenue	-	727,097	727,097	N/A
<b>SUBTOTAL (ONE-TIME RECEIPTS)</b>	<b>\$ 0</b>	<b>\$ 10,453,523</b>	<b>\$ 10,453,523</b>	<b>N/A</b>
<b>GRAND TOTAL</b>	<b>\$ 1,208,389,460</b>	<b>\$ 1,336,634,596</b>	<b>\$ 128,245,137</b>	<b>10.6%</b>

**NOTES**

\* The state sales tax rate was decreased from 4.5% to 4.2% on July 1st. However, July sales tax collections were from June sales. The additional 0.3% was noted as a one-time receipt in July.

# Legislative Adopted FY2024 vs. Actual FY2024 Receipts

■ Leg. Adopted FY2024 Receipts    
 ■ Actual FY2024 Receipts    
 -■- Actual vs. Adopted



Through 6 months, total ongoing receipts were \$117.8 million MORE than the Legislative Adopted FY2024 estimate.

**Governor's Revised FY2024 Estimate (Nov. 2023) vs. Actual Revenues  
DECEMBER FY2024 Comparison**

	<b>Gov. Revised DECEMBER FY2024</b>	<b>Actual DECEMBER FY2024</b>	<b>DOLLAR CHANGE</b>	<b>MTD % Chg. Actual/Revised Comparison</b>
<b>ONGOING RECEIPTS</b>				
Net Sales and Use Tax (excl. cost of admin)	114,069,190	114,209,646	140,455	0.1%
Lottery	12,911,985	13,589,650	677,665	5.2%
Net Contractor's Excise Tax	17,661,636	18,648,302	986,666	5.6%
Insurance Company Tax	1,284,240	517,854	(766,386)	-59.7%
Unclaimed Property Receipts	(5,845,053)	6,497,560	12,342,613	N/A
Licenses, Permits, and Fees	2,564,925	328,343	(2,236,582)	-87.2%
Tobacco Taxes	3,881,377	3,530,411	(350,965)	-9.0%
Trust Funds	-	-	0	N/A
Net Transfers In (excluding one-time)	765,965	1,139,108	373,143	48.7%
Alcohol Beverage Tax	7,324	13,862	6,538	89.3%
Bank Franchise Tax	895,293	63,551	(831,742)	-92.9%
Charges for Goods and Services	861,103	920,168	59,065	6.9%
Telecommunications Tax	189,022	178,207	(10,815)	-5.7%
Severance Taxes	1,245	1,296	51	4.1%
Investment Income and Interest	10,612	2,514	(8,098)	-76.3%
Alcohol Beverage 2% Wholesale Tax	263,888	328,670	64,782	24.5%
<b>TOTAL (ONGOING RECEIPTS)</b>	<b>\$ 149,522,752</b>	<b>\$ 159,969,141</b>	<b>\$ 10,446,389</b>	<b>7.0%</b>
<b>ONE-TIME RECEIPTS</b>				
Bank Franchise Tax Prior Year Revenue	-	(1,037,677)	(1,037,677)	N/A
<b>SUBTOTAL (ONE-TIME RECEIPTS)</b>	<b>\$ 0</b>	<b>\$ (1,037,677)</b>	<b>\$ (1,037,677)</b>	<b>N/A</b>
<b>GRAND TOTAL</b>	<b>\$ 149,522,752</b>	<b>\$ 158,931,464</b>	<b>\$ 9,408,712</b>	<b>6.3%</b>

**Governor's Revised FY2024 Estimate (Nov. 2023) vs. Actual Revenues  
Year-To-Date Through DECEMBER FY2024 Comparison**

	<b>Gov. Revised DECEMBER YTD FY2024</b>	<b>Actual DECEMBER YTD FY2024</b>	<b>DOLLAR CHANGE</b>	<b>YTD % Chg. Actual/Revised Comparison</b>
<b>ONGOING RECEIPTS</b>				
Net Sales and Use Tax (excl. cost of admin)	756,547,279	758,212,929	1,665,650	0.2%
Lottery	85,628,346	86,592,573	964,227	1.1%
Net Contractor's Excise Tax	121,375,011	123,668,005	2,292,994	1.9%
Insurance Company Tax	53,748,335	51,165,667	(2,582,668)	-4.8%
Unclaimed Property Receipts	135,954,677	150,139,246	14,184,568	10.4%
Licenses, Permits, and Fees	17,204,193	14,286,051	(2,918,142)	-17.0%
Tobacco Taxes	25,377,666	24,761,741	(615,926)	-2.4%
Trust Funds	33,665,904	33,665,904	0	0.0%
Net Transfers In (excluding one-time)	14,413,504	14,796,645	383,141	2.7%
Alcohol Beverage Tax	2,522,690	2,527,448	4,758	0.2%
Bank Franchise Tax	3,272,529	3,428,481	155,952	4.8%
Charges for Goods and Services	5,849,380	6,100,069	250,689	4.3%
Telecommunications Tax	942,555	925,446	(17,109)	-1.8%
Severance Taxes	5,969,793	5,311,122	(658,671)	-11.0%
Investment Income and Interest	48,986,860	48,968,331	(18,529)	0.0%
Alcohol Beverage 2% Wholesale Tax	1,817,165	1,631,416	(185,749)	-10.2%
<b>SUBTOTAL (ONGOING RECEIPTS)</b>	<b>\$ 1,313,275,889</b>	<b>\$ 1,326,181,074</b>	<b>\$ 12,905,185</b>	<b>1.0%</b>
<b>ONE-TIME RECEIPTS</b>				
One-Time Sales and Use Tax*	9,726,426	9,726,426	0	0.0%
Bank Franchise Tax Prior Year Revenue	1,751,228	727,097	(1,024,131)	-58.5%
<b>SUBTOTAL (ONE-TIME RECEIPTS)</b>	<b>\$ 11,477,654</b>	<b>\$ 10,453,523</b>	<b>\$ (1,024,131)</b>	<b>-8.9%</b>
<b>GRAND TOTAL</b>	<b>\$ 1,324,753,543</b>	<b>\$ 1,336,634,596</b>	<b>\$ 11,881,053</b>	<b>0.9%</b>

**NOTES:**

\* The state sales tax rate was decreased from 4.5% to 4.2% on July 1st. However, July sales tax collections were from June sales. The additional 0.3% was noted as a one-time receipt in July.



# Ongoing State Sales and Use Tax (RATE ADJUSTED)

(Excludes one-time receipts)

