

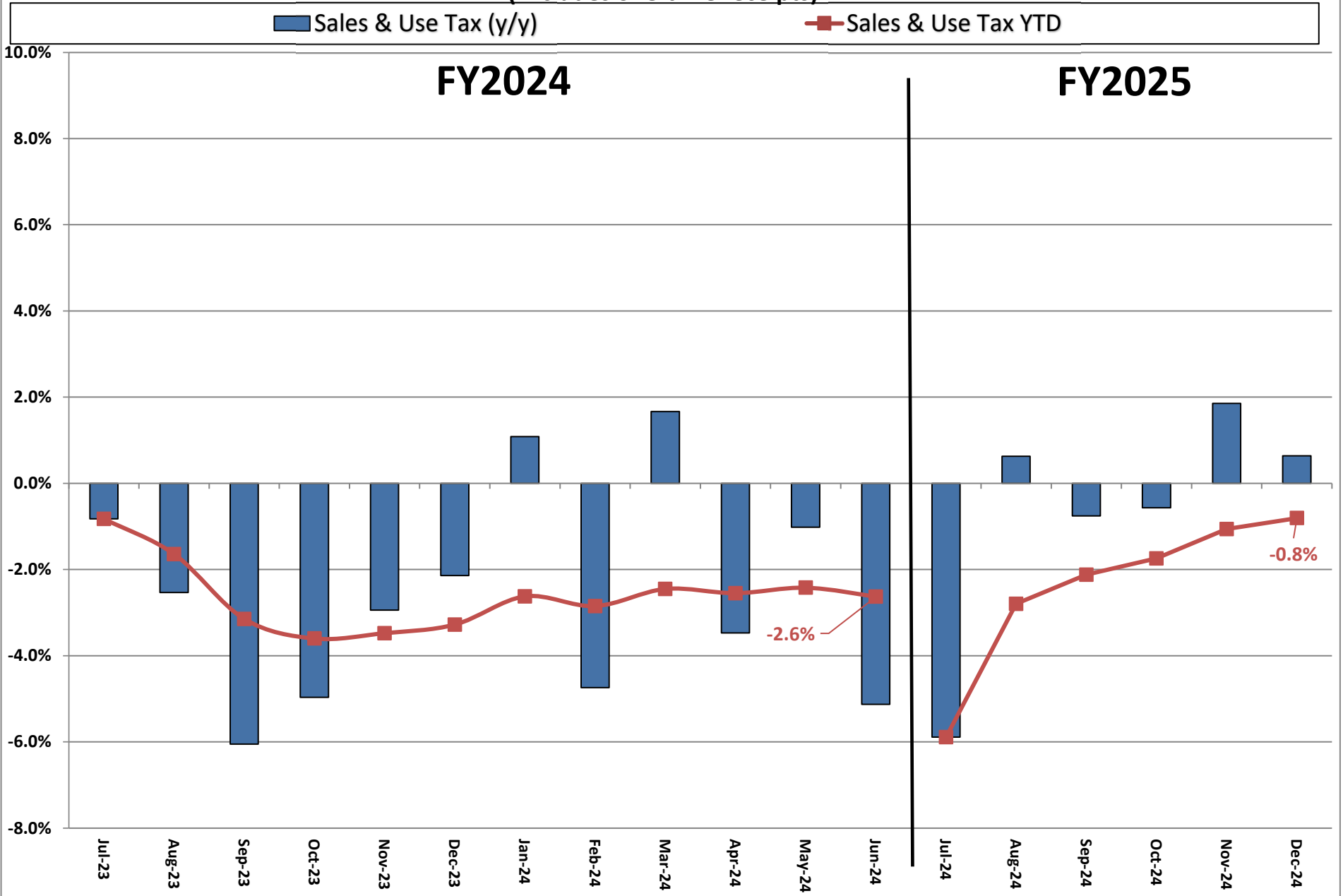
**Actual Revenue FY2024 vs. Actual Revenue FY2025  
DECEMBER FY2025 Comparison**

	<b>Actual DECEMBER FY2024</b>	<b>Actual DECEMBER FY2025</b>	<b>DOLLAR CHANGE</b>	<b>PERCENT CHANGE</b>
<b>ONGOING RECEIPTS</b>				
Net Sales and Use Tax (excl. cost of admin)	114,209,646	114,940,919	731,273	0.6%
Lottery	13,589,650	13,261,424	(328,226)	-2.4%
Net Contractor's Excise Tax	18,648,302	18,394,437	(253,865)	-1.4%
Insurance Company Tax	517,854	1,076,629	558,775	107.9%
Unclaimed Property Receipts	6,497,560	(2,660,748)	(9,158,308)	N/A
Licenses, Permits, and Fees	328,343	9,807,641	9,479,298	2887.0%
Tobacco Taxes	3,530,411	3,390,059	(140,352)	-4.0%
Trust Funds	-	-	0	N/A
Net Transfers In (excluding one-time)	1,139,108	917,869	(221,239)	-19.4%
Alcohol Beverage Tax	13,862	11,391	(2,471)	-17.8%
Bank Franchise Tax	63,551	5,799,982	5,736,431	9026.5%
Charges for Goods and Services	920,168	745,107	(175,061)	-19.0%
Telecommunications Tax	178,207	175,056	(3,151)	-1.8%
Severance Taxes	1,296	1,919	623	48.1%
Investment Income and Interest	2,514	2,349	(165)	-6.5%
Alcohol Beverage 2% Wholesale Tax	328,670	295,560	(33,110)	-10.1%
<b>SUBTOTAL (ONGOING RECEIPTS)</b>	<b>\$ 159,969,141</b>	<b>\$ 166,159,596</b>	<b>\$ 6,190,454</b>	<b>3.9%</b>
<b>ONE-TIME RECEIPTS</b>				
Bank Franchise Tax Prior Year Revenue	(1,037,677)	600,355	1,638,032	-157.9%
<b>SUBTOTAL (ONE-TIME RECEIPTS)</b>	<b>\$ (1,037,677)</b>	<b>\$ 600,355</b>	<b>\$ 1,638,032</b>	<b>-157.9%</b>
<b>GRAND TOTAL</b>	<b>\$ 158,931,464</b>	<b>\$ 166,759,951</b>	<b>\$ 7,828,486</b>	<b>4.9%</b>

**Actual Revenue FY2024 vs. Actual Revenue FY2025  
Year-To-Date Through DECEMBER FY2025 Comparison**

	<b>Actual DECEMBER YTD FY2024</b>	<b>Actual DECEMBER YTD FY2025</b>	<b>DOLLAR CHANGE</b>	<b>YTD GROWTH OVER FY2024</b>
<b>ONGOING RECEIPTS</b>				
Net Sales and Use Tax (excl. cost of admin)	758,212,929	752,111,115	(6,101,814)	-0.8%
Lottery	86,592,573	87,409,963	817,390	0.9%
Net Contractor's Excise Tax	123,668,005	120,985,635	(2,682,370)	-2.2%
Insurance Company Tax	51,165,667	57,433,815	6,268,148	12.3%
Unclaimed Property Receipts	150,139,246	110,788,682	(39,350,564)	-26.2%
Licenses, Permits, and Fees	14,286,051	11,853,865	(2,432,187)	-17.0%
Tobacco Taxes	24,761,741	23,735,635	(1,026,106)	-4.1%
Trust Funds	33,665,904	35,309,002	1,643,097	4.9%
Net Transfers In (excluding one-time)	14,796,645	14,153,751	(642,894)	-4.3%
Alcohol Beverage Tax	2,527,448	2,474,908	(52,540)	-2.1%
Bank Franchise Tax	3,428,481	9,805,224	6,376,743	186.0%
Charges for Goods and Services	6,100,069	5,782,821	(317,248)	-5.2%
Telecommunications Tax	925,446	907,117	(18,329)	-2.0%
Severance Taxes	5,311,122	8,196,546	2,885,425	54.3%
Investment Income and Interest	48,968,331	95,894,981	46,926,650	95.8%
Alcohol Beverage 2% Wholesale Tax	1,631,416	1,595,672	(35,744)	-2.2%
<b>SUBTOTAL (ONGOING RECEIPTS)</b>	<b>\$ 1,326,181,074</b>	<b>\$ 1,338,438,732</b>	<b>\$ 12,257,658</b>	<b>0.9%</b>
<b>ONE-TIME RECEIPTS</b>				
One-Time Sales and Use Tax	9,726,426	-	(9,726,426)	-100.0%
Bank Franchise Tax Prior Year Revenue	727,097	817,339	90,242	12.4%
One-Time Unclaimed Property	-	167,664,409	167,664,409	N/A
<b>SUBTOTAL (ONE-TIME RECEIPTS)</b>	<b>\$ 10,453,523</b>	<b>\$ 168,481,748</b>	<b>\$ 158,028,225</b>	<b>1511.7%</b>
<b>GRAND TOTAL</b>	<b>\$ 1,336,634,596</b>	<b>\$ 1,506,920,480</b>	<b>\$ 170,285,883</b>	<b>12.7%</b>

# Ongoing State Sales and Use Tax (Excludes one-time receipts)



**Legislative Adopted FY2025 Estimate (Feb. 2024) vs. Actual Revenues  
DECEMBER FY2025 Comparison**

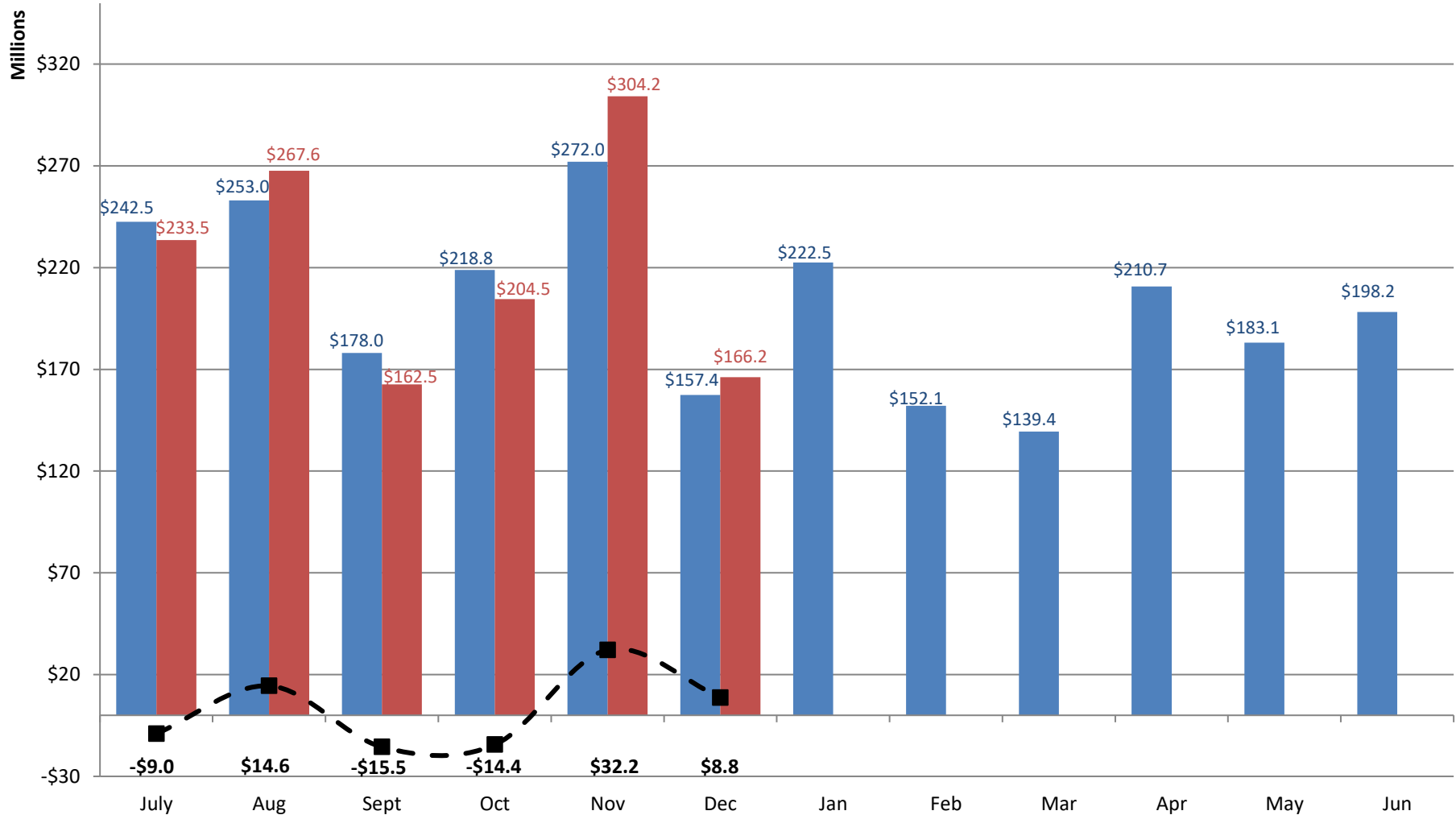
	<b>Leg. Adopted DECEMBER FY2025</b>	<b>Actual DECEMBER FY2025</b>	<b>DOLLAR CHANGE</b>	<b>PERCENT CHANGE</b>
<b>ONGOING RECEIPTS</b>				
Net Sales and Use Tax (excl. cost of admin)	119,918,223	114,940,919	(4,977,304)	-4.2%
Lottery	13,320,795	13,261,424	(59,371)	-0.4%
Net Contractor's Excise Tax	19,064,608	18,394,437	(670,171)	-3.5%
Insurance Company Tax	559,117	1,076,629	517,512	92.6%
Unclaimed Property Receipts	(3,365,685)	(2,660,748)	704,937	N/A
Licenses, Permits, and Fees	877,214	9,807,641	8,930,426	1018.0%
Tobacco Taxes	3,784,459	3,390,059	(394,400)	-10.4%
Trust Funds	-	-	0	N/A
Net Transfers In (excluding one-time)	843,500	917,869	74,369	8.8%
Alcohol Beverage Tax	7,805	11,391	3,586	45.9%
Bank Franchise Tax	890,098	5,799,982	4,909,885	551.6%
Charges for Goods and Services	923,526	745,107	(178,420)	-19.3%
Telecommunications Tax	176,094	175,056	(1,038)	-0.6%
Severance Taxes	1,967	1,919	(47)	-2.4%
Investment Income and Interest	39,729	2,349	(37,380)	-94.1%
Alcohol Beverage 2% Wholesale Tax	332,632	295,560	(37,072)	-11.1%
<b>TOTAL (ONGOING RECEIPTS)</b>	<b>\$ 157,374,084</b>	<b>\$ 166,159,596</b>	<b>\$ 8,785,512</b>	<b>5.6%</b>
<b>ONE-TIME RECEIPTS</b>				
Bank Franchise Tax Prior Year Revenue	-	600,355	600,355	N/A
<b>SUBTOTAL (ONE-TIME RECEIPTS)</b>	<b>\$ 0</b>	<b>\$ 600,355</b>	<b>\$ 600,355</b>	<b>N/A</b>
<b>GRAND TOTAL</b>	<b>\$ 157,374,084</b>	<b>\$ 166,759,951</b>	<b>\$ 9,385,867</b>	<b>6.0%</b>

**Legislative Adopted FY2025 Estimate (Feb. 2024) vs. Actual Revenues  
Year-to-Date Through DECEMBER FY2025 Comparison**

	<b>Leg. Adopted DECEMBER YTD FY2025</b>	<b>Actual DECEMBER YTD FY2025</b>	<b>DOLLAR CHANGE</b>	<b>YTD % Chg. Actual/Adopt Comparison</b>
<b>ONGOING RECEIPTS</b>				
Net Sales and Use Tax (excl. cost of admin)	781,621,245	752,111,115	(29,510,130)	-3.8%
Lottery	85,660,947	87,409,963	1,749,016	2.0%
Net Contractor's Excise Tax	127,618,764	120,985,635	(6,633,129)	-5.2%
Insurance Company Tax	57,463,404	57,433,815	(29,590)	-0.1%
Unclaimed Property Receipts	86,055,415	110,788,682	24,733,267	28.7%
Licenses, Permits, and Fees	15,711,960	11,853,865	(3,858,095)	-24.6%
Tobacco Taxes	24,639,074	23,735,635	(903,439)	-3.7%
Trust Funds	35,309,002	35,309,002	0	0.0%
Net Transfers In (excluding one-time)	13,760,355	14,153,751	393,396	2.9%
Alcohol Beverage Tax	2,560,715	2,474,908	(85,807)	-3.4%
Bank Franchise Tax	3,606,200	9,805,224	6,199,024	171.9%
Charges for Goods and Services	6,193,722	5,782,821	(410,900)	-6.6%
Telecommunications Tax	917,399	907,117	(10,282)	-1.1%
Severance Taxes	5,499,062	8,196,546	2,697,484	49.1%
Investment Income and Interest	73,485,795	95,894,981	22,409,186	30.5%
Alcohol Beverage 2% Wholesale Tax	1,623,285	1,595,672	(27,613)	-1.7%
<b>SUBTOTAL (ONGOING RECEIPTS)</b>	<b>\$ 1,321,726,344</b>	<b>\$ 1,338,438,732</b>	<b>\$ 16,712,388</b>	<b>1.3%</b>
<b>ONE-TIME RECEIPTS</b>				
Bank Franchise Tax Prior Year Revenue	-	817,339	817,339	N/A
One-Time Unclaimed Property	-	167,664,409	167,664,409	N/A
<b>SUBTOTAL (ONE-TIME RECEIPTS)</b>	<b>\$ 0</b>	<b>\$ 168,481,748</b>	<b>\$ 168,481,748</b>	<b>N/A</b>
<b>GRAND TOTAL</b>	<b>\$ 1,321,726,344</b>	<b>\$ 1,506,920,480</b>	<b>\$ 185,194,136</b>	<b>14.0%</b>

# Legislative Adopted FY2025 vs. Actual FY2025 Receipts

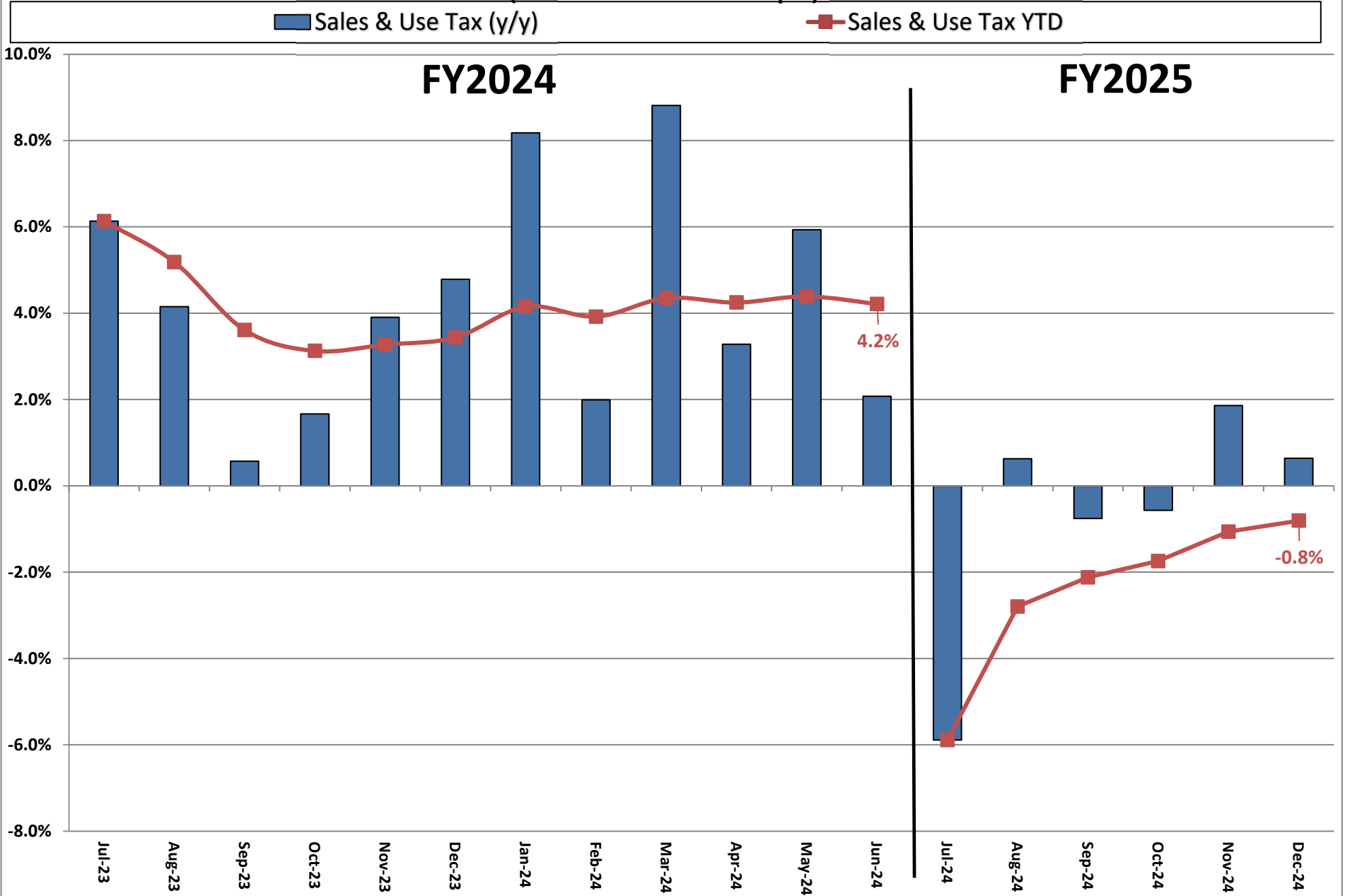
■ Leg. Adopted FY2025 Receipts    
 ■ Actual FY2025 Receipts    
 -■- Actual vs. Adopted



Through 6 months, total ongoing receipts were \$16.7 million MORE than the Legislative Adopted FY2025 estimate.

# Ongoing State Sales and Use Tax (RATE ADJUSTED)

(Excludes one-time receipts)



**Governor's Revised FY2025 Estimate (Nov. 2024) vs. Actual Revenues  
DECEMBER FY2025 Comparison**

	<b>Gov. Revised DECEMBER FY2025</b>	<b>Actual DECEMBER FY2025</b>	<b>DOLLAR CHANGE</b>	<b>MTD % Chg. Actual/Revised Comparison</b>
<b>ONGOING RECEIPTS</b>				
Net Sales and Use Tax (excl. cost of admin)	118,025,104	114,940,919	(3,084,185)	-2.6%
Lottery	13,159,049	13,261,424	102,375	0.8%
Net Contractor's Excise Tax	18,346,344	18,394,437	48,093	0.3%
Insurance Company Tax	1,575,438	1,076,629	(498,810)	-31.7%
Unclaimed Property Receipts	(4,057,281)	(2,660,748)	1,396,533	N/A
Licenses, Permits, and Fees	9,903,154	9,807,641	(95,514)	-1.0%
Tobacco Taxes	3,735,919	3,390,059	(345,860)	-9.3%
Trust Funds	-	-	0	N/A
Net Transfers In (excluding one-time)	914,837	917,869	3,032	0.3%
Alcohol Beverage Tax	7,726	11,391	3,666	47.4%
Bank Franchise Tax	1,164,300	5,799,982	4,635,683	398.2%
Charges for Goods and Services	929,577	745,107	(184,470)	-19.8%
Telecommunications Tax	163,436	175,056	11,619	7.1%
Severance Taxes	3,692	1,919	(1,773)	-48.0%
Investment Income and Interest	12,147	2,349	(9,797)	-80.7%
Alcohol Beverage 2% Wholesale Tax	329,470	295,560	(33,910)	-10.3%
<b>TOTAL (ONGOING RECEIPTS)</b>	<b>\$ 164,212,913</b>	<b>\$ 166,159,596</b>	<b>\$ 1,946,682</b>	<b>1.2%</b>
<b>ONE-TIME RECEIPTS</b>				
Bank Franchise Tax Prior Year Revenue	-	600,355	600,355	N/A
<b>SUBTOTAL (ONE-TIME RECEIPTS)</b>	<b>\$ 0</b>	<b>\$ 600,355</b>	<b>\$ 600,355</b>	<b>N/A</b>
<b>GRAND TOTAL</b>	<b>\$ 164,212,913</b>	<b>\$ 166,759,951</b>	<b>\$ 2,547,037</b>	<b>1.6%</b>

**NOTES**



**Governor's Revised FY2025 Estimate (Nov. 2024) vs. Actual Revenues  
Year-To-Date Through DECEMBER FY2025 Comparison**

	<b>Gov. Revised DECEMBER YTD FY2025</b>	<b>Actual DECEMBER YTD FY2025</b>	<b>DOLLAR CHANGE</b>	<b>YTD % Chg. Actual/Revised Comparison</b>
<b>ONGOING RECEIPTS</b>				
Net Sales and Use Tax (excl. cost of admin)	755,552,254	752,111,115	(3,441,139)	-0.5%
Lottery	86,460,924	87,409,963	949,039	1.1%
Net Contractor's Excise Tax	120,261,445	120,985,635	724,190	0.6%
Insurance Company Tax	58,126,830	57,433,815	(693,015)	-1.2%
Unclaimed Property Receipts	108,077,603	110,788,682	2,711,079	2.5%
Licenses, Permits, and Fees	12,696,628	11,853,865	(842,763)	-6.6%
Tobacco Taxes	24,417,943	23,735,635	(682,308)	-2.8%
Trust Funds	35,309,002	35,309,002	0	0.0%
Net Transfers In (excluding one-time)	14,645,257	14,153,751	(491,505)	-3.4%
Alcohol Beverage Tax	2,473,007	2,474,908	1,901	0.1%
Bank Franchise Tax	5,620,305	9,805,224	4,184,919	74.5%
Charges for Goods and Services	5,718,283	5,782,821	64,538	1.1%
Telecommunications Tax	875,853	907,117	31,264	3.6%
Severance Taxes	6,514,130	8,196,546	1,682,417	25.8%
Investment Income and Interest	95,918,951	95,894,981	(23,971)	0.0%
Alcohol Beverage 2% Wholesale Tax	1,631,886	1,595,672	(36,214)	-2.2%
<b>SUBTOTAL (ONGOING RECEIPTS)</b>	<b>\$ 1,334,300,299</b>	<b>\$ 1,338,438,732</b>	<b>\$ 4,138,433</b>	<b>0.3%</b>
<b>ONE-TIME RECEIPTS</b>				
Bank Franchise Tax Prior Year Revenue	54,690	817,339	762,649	1394.5%
One-Time Unclaimed Property	167,664,409	167,664,409	0	0.0%
<b>SUBTOTAL (ONE-TIME RECEIPTS)</b>	<b>\$ 167,719,099</b>	<b>\$ 168,481,748</b>	<b>\$ 762,649</b>	<b>0.5%</b>
<b>GRAND TOTAL</b>	<b>\$ 1,502,019,398</b>	<b>\$ 1,506,920,480</b>	<b>\$ 4,901,082</b>	<b>0.3%</b>