

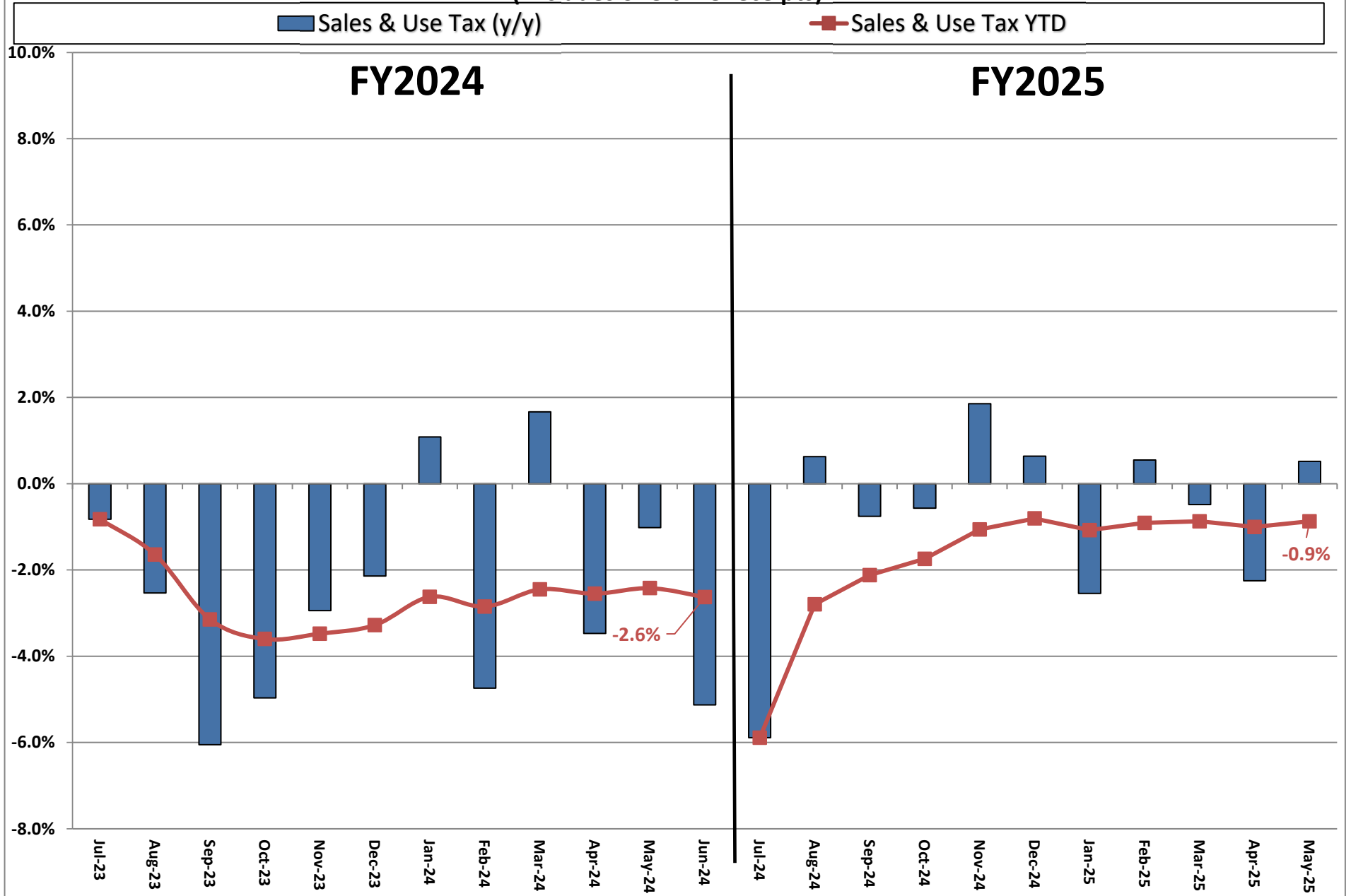
**Actual Revenue FY2024 vs. Actual Revenue FY2025
MAY FY2025 Comparison**

	Actual MAY FY2024	Actual MAY FY2025	DOLLAR CHANGE	PERCENT CHANGE
ONGOING RECEIPTS				
Net Sales and Use Tax (excl. cost of admin)	113,477,200	114,067,129	589,929	0.5%
Lottery	13,986,056	13,739,252	(246,803)	-1.8%
Net Contractor's Excise Tax	14,332,278	13,916,659	(415,618)	-2.9%
Insurance Company Tax	16,197,584	7,414,985	(8,782,599)	-54.2%
Unclaimed Property Receipts	(2,435,438)	(9,045,019)	(6,609,581)	N/A
Licenses, Permits, and Fees	567,803	10,259,510	9,691,708	1706.9%
Tobacco Taxes	3,898,292	4,184,325	286,034	7.3%
Trust Funds	14,668,289	15,057,005	388,716	2.7%
Net Transfers In (excluding one-time)	2,800,752	5,752,317	2,951,566	105.4%
Alcohol Beverage Tax	5,440	4,956	(485)	-8.9%
Bank Franchise Tax	787,946	(2,460,672)	(3,248,618)	-412.3%
Charges for Goods and Services	932,676	625,754	(306,923)	-32.9%
Telecommunications Tax	194,304	197,285	2,981	1.5%
Severance Taxes	23,202	2,862	(20,340)	-87.7%
Investment Income and Interest	2,687	1,257	(1,430)	-53.2%
Alcohol Beverage 2% Wholesale Tax	230,074	232,380	2,305	1.0%
SUBTOTAL (ONGOING RECEIPTS)	\$ 179,669,144	\$ 173,949,985	\$ (5,719,160)	-3.2%
ONE-TIME RECEIPTS				
One-Time Unclaimed Property	-	9,045,019	9,045,019	N/A
SUBTOTAL (ONE-TIME RECEIPTS)	\$ 0	\$ 9,045,019	\$ 9,045,019	N/A
GRAND TOTAL	\$ 179,669,144	\$ 182,995,004	\$ 3,325,859	1.9%

Actual Revenue FY2024 vs. Actual Revenue FY2025
Year-To-Date Through MAY FY2025 Comparison

	Actual MAY YTD FY2024	Actual MAY YTD FY2025	DOLLAR CHANGE	YTD GROWTH OVER FY2024
ONGOING RECEIPTS				
Net Sales and Use Tax (excl. cost of admin)	1,333,439,047	1,321,830,113	(11,608,933)	-0.9%
Lottery	155,786,856	157,081,059	1,294,203	0.8%
Net Contractor's Excise Tax	201,562,561	196,668,830	(4,893,731)	-2.4%
Insurance Company Tax	128,310,134	142,641,943	14,331,809	11.2%
Unclaimed Property Receipts	135,887,313	69,046,729	(66,840,585)	N/A
Licenses, Permits, and Fees	56,568,527	59,149,978	2,581,451	4.6%
Tobacco Taxes	39,053,513	36,528,311	(2,525,203)	-6.5%
Trust Funds	48,334,193	50,366,006	2,031,813	4.2%
Net Transfers In (excluding one-time)	26,009,393	26,149,712	140,319	0.5%
Alcohol Beverage Tax	7,049,274	6,680,179	(369,095)	-5.2%
Bank Franchise Tax	27,733,489	25,788,252	(1,945,237)	-7.0%
Charges for Goods and Services	12,004,385	10,776,839	(1,227,546)	-10.2%
Telecommunications Tax	1,774,008	1,812,928	38,920	2.2%
Severance Taxes	10,932,699	14,717,662	3,784,963	34.6%
Investment Income and Interest	49,022,342	95,935,154	46,912,812	95.7%
Alcohol Beverage 2% Wholesale Tax	2,813,468	2,771,351	(42,116)	-1.5%
SUBTOTAL (ONGOING RECEIPTS)	\$ 2,236,281,204	\$ 2,217,945,047	\$ (18,336,157)	-0.8%
ONE-TIME RECEIPTS				
One-Time Sales and Use Tax	12,319,527	-	(12,319,527)	-100.0%
Bank Franchise Tax Prior Year Revenue	1,443,391	1,414,044	(29,347)	-2.0%
One-Time Unclaimed Property	-	224,059,807	224,059,807	N/A
SUBTOTAL (ONE-TIME RECEIPTS)	\$ 13,762,918	\$ 225,473,851	\$ 211,710,933	1538.3%
GRAND TOTAL	\$ 2,250,044,122	\$ 2,443,418,898	\$ 193,374,776	8.6%

Ongoing State Sales and Use Tax (Excludes one-time receipts)



Legislative Revised Adopted FY2025 Estimate (Feb. 2025) vs. Actual Revenues
MAY FY2025 Comparison

	Leg. Rev. Adopted MAY FY2025	Actual MAY FY2025	DOLLAR CHANGE	PERCENT CHANGE
ONGOING RECEIPTS				
Net Sales and Use Tax (excl. cost of admin)	114,314,446	114,067,129	(247,318)	-0.2%
Lottery	15,628,628	13,739,252	(1,889,376)	-12.1%
Net Contractor's Excise Tax	13,529,461	13,916,659	387,199	2.9%
Insurance Company Tax	6,127,394	7,414,985	1,287,590	21.0%
Unclaimed Property Receipts	(9,045,019)	(9,045,019)	0	0.0%
Licenses, Permits, and Fees	3,686,193	10,259,510	6,573,318	178.3%
Tobacco Taxes	3,757,598	4,184,325	426,728	11.4%
Trust Funds	15,109,166	15,057,005	(52,162)	-0.3%
Net Transfers In (excluding one-time)	3,111,771	5,752,317	2,640,547	84.9%
Alcohol Beverage Tax	116,884	4,956	(111,928)	-95.8%
Bank Franchise Tax	988,329	(2,460,672)	(3,449,001)	-349.0%
Charges for Goods and Services	1,267,625	625,754	(641,871)	-50.6%
Telecommunications Tax	176,643	197,285	20,641	11.7%
Severance Taxes	1,123,594	2,862	(1,120,732)	-99.7%
Investment Income and Interest	17,248	1,257	(15,991)	-92.7%
Alcohol Beverage 2% Wholesale Tax	272,984	232,380	(40,605)	-14.9%
TOTAL (ONGOING RECEIPTS)	\$ 170,182,946	\$ 173,949,985	\$ 3,767,039	2.2%
ONE-TIME RECEIPTS				
One-Time Unclaimed Property	-	9,045,019	9,045,019	N/A
SUBTOTAL (ONE-TIME RECEIPTS)	\$ 0	\$ 9,045,019	\$ 9,045,019	N/A
GRAND TOTAL	\$ 170,182,946	\$ 182,995,004	\$ 12,812,058	7.5%

Legislative Revised Adopted FY2025 Estimate (Feb. 2025) vs. Actual Revenues
Year-to-Date Through MAY FY2025 Comparison

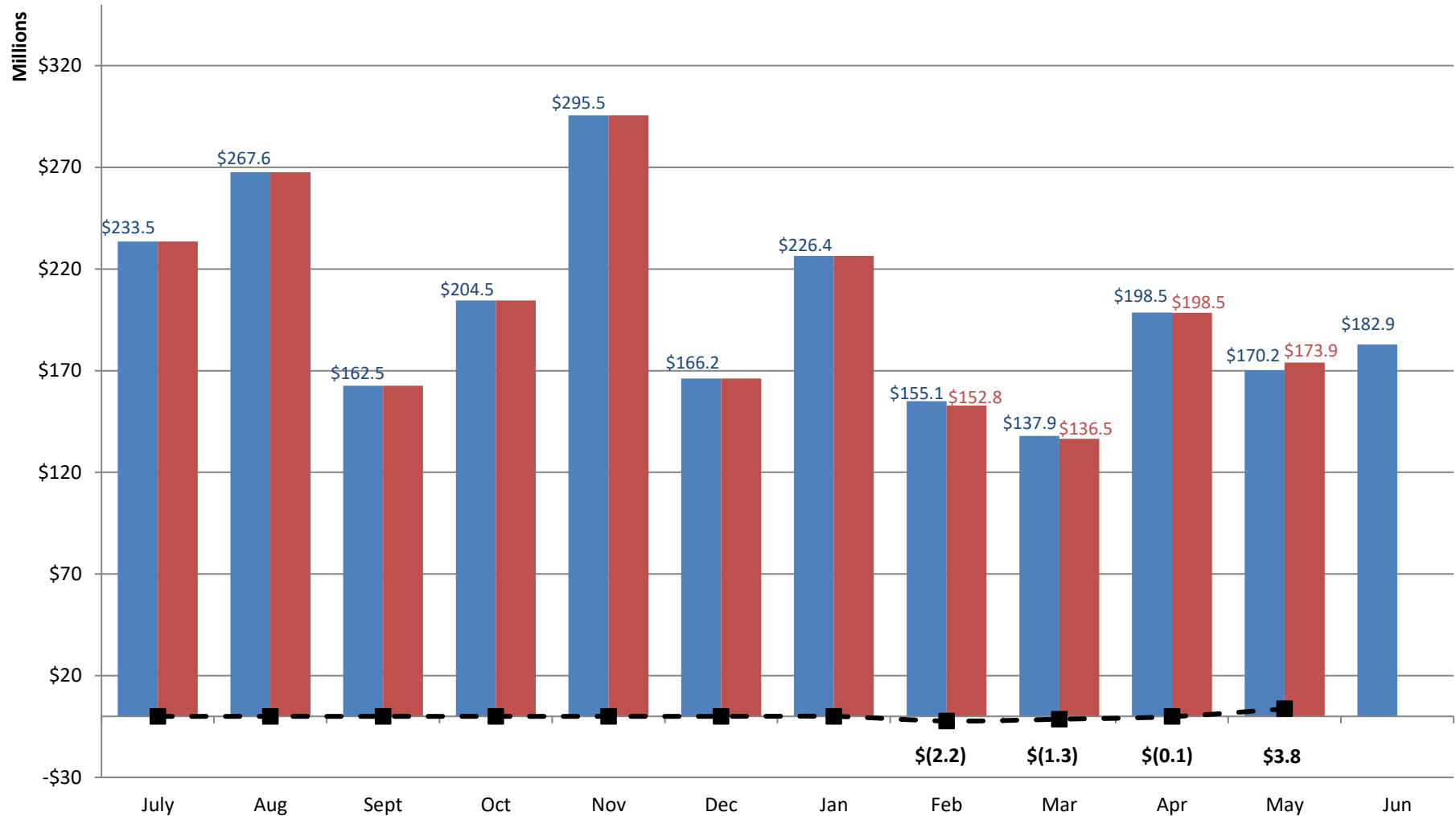
	Leg. Rev. Adopted MAY YTD FY2025	Actual MAY YTD FY2025	DOLLAR CHANGE	YTD % Chg. Actual/Adopt Comparison
ONGOING RECEIPTS				
Net Sales and Use Tax (excl. cost of admin)	1,325,045,731	1,321,830,113	(3,215,618)	-0.2%
Lottery	159,070,297	157,081,059	(1,989,239)	-1.3%
Net Contractor's Excise Tax	196,578,725	196,668,830	90,105	0.0%
Insurance Company Tax	138,734,194	142,641,943	3,907,749	2.8%
Unclaimed Property Receipts	69,046,729	69,046,729	0	0.0%
Licenses, Permits, and Fees	57,359,970	59,149,978	1,790,008	3.1%
Tobacco Taxes	36,487,447	36,528,311	40,864	0.1%
Trust Funds	50,418,168	50,366,006	(52,162)	-0.1%
Net Transfers In (excluding one-time)	24,386,457	26,149,712	1,763,255	7.2%
Alcohol Beverage Tax	6,791,211	6,680,179	(111,032)	-1.6%
Bank Franchise Tax	27,132,161	25,788,252	(1,343,909)	-5.0%
Charges for Goods and Services	11,553,140	10,776,839	(776,300)	-6.7%
Telecommunications Tax	1,809,713	1,812,928	3,215	0.2%
Severance Taxes	14,585,319	14,717,662	132,343	0.9%
Investment Income and Interest	95,937,307	95,935,154	(2,152)	0.0%
Alcohol Beverage 2% Wholesale Tax	2,883,490	2,771,351	(112,139)	-3.9%
SUBTOTAL (ONGOING RECEIPTS)	\$ 2,217,820,059	2,217,945,047	\$ 124,989	0.0%
ONE-TIME RECEIPTS				
Bank Franchise Tax Prior Year Revenue	1,539,871	1,414,044	(125,827)	-8.2%
One-Time Unclaimed Property	176,321,347	224,059,807	47,738,460	27.1%
SUBTOTAL (ONE-TIME RECEIPTS)	\$ 177,861,218	\$ 225,473,851	\$ 47,612,633	26.8%
GRAND TOTAL	\$ 2,395,681,277	\$ 2,443,418,898	\$ 47,737,622	2.0%

Legislative Adopted FY2025 vs. Actual FY2025 Receipts

■ Leg. Adopted FY2025 Receipts

■ Actual FY2025 Receipts

■ Actual vs. Adopted



Through 11 months, total ongoing receipts were \$0.1 million MORE than the Legislative Revised Adopted FY2025 estimate.

Ongoing State Sales and Use Tax (RATE ADJUSTED)

(Excludes one-time receipts)

