

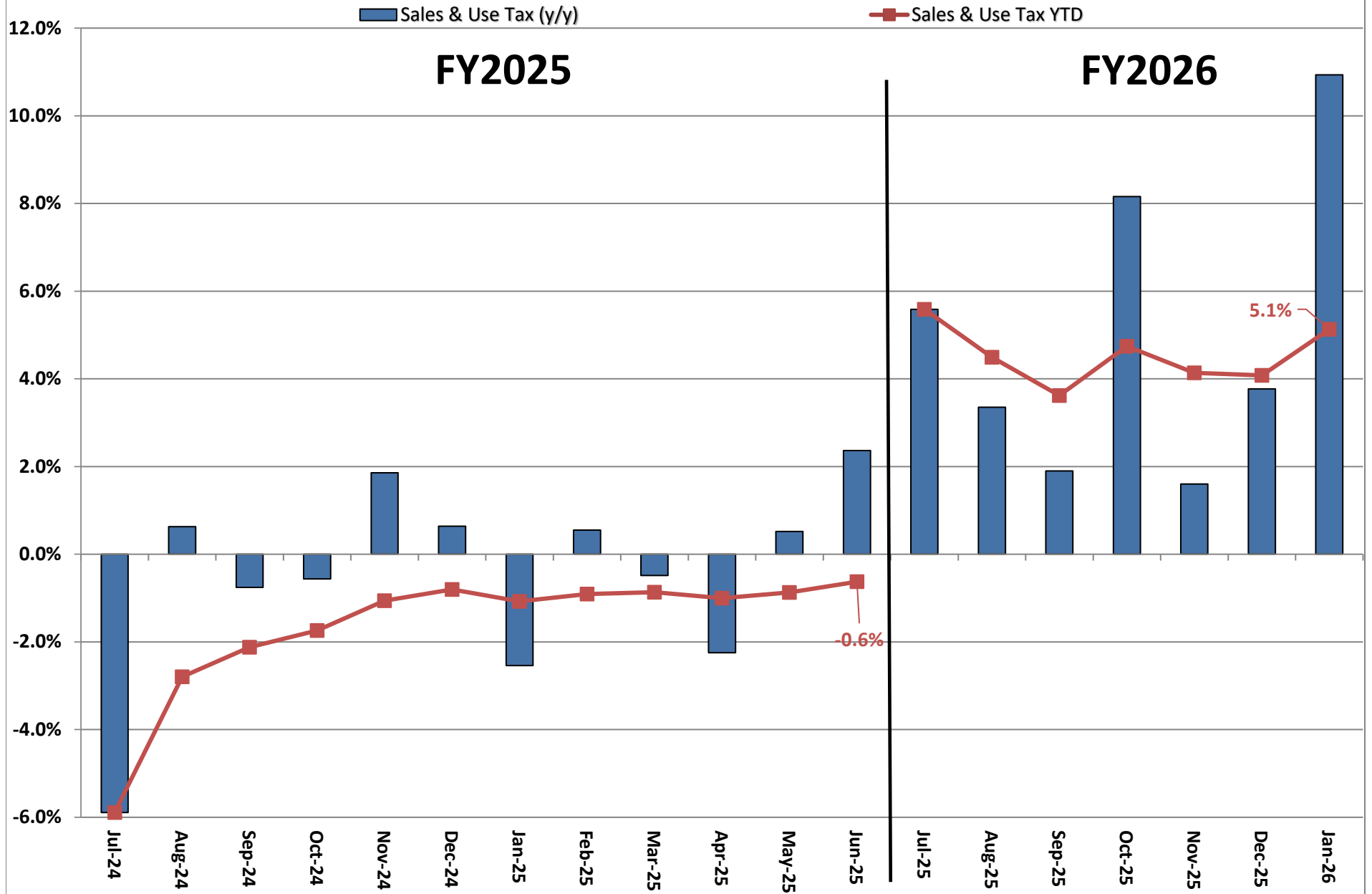
**Actual Revenue FY2025 vs. Actual Revenue FY2026
JANUARY FY2026 Comparison**

	Actual JANUARY FY2025	Actual JANUARY FY2026	DOLLAR CHANGE	PERCENT CHANGE
ONGOING RECEIPTS				
Net Sales and Use Tax (excl. cost of admin)	136,562,600	151,491,945	14,929,345	10.9%
Lottery	13,846,043	14,683,845	837,802	6.1%
Net Contractor's Excise Tax	22,714,196	22,717,852	3,656	0.0%
Insurance Company Tax	13,385,700	17,896,180	4,510,480	33.7%
Unclaimed Property Receipts	-	-	-	N/A
Licenses, Permits, and Fees	27,217,919	10,468,038	(16,749,881)	-61.5%
Tobacco Taxes	3,557,498	3,628,838	71,340	2.0%
Trust Funds	-	-	0	N/A
Net Transfers In (excluding one-time)	1,641,792	951,533	(690,259)	-42.0%
Alcohol Beverage Tax	2,231,720	2,381,944	150,224	6.7%
Bank Franchise Tax	49,313	474,973	425,660	863.2%
Charges for Goods and Services	1,467,471	1,264,348	(203,122)	-13.8%
Telecommunications Tax	170,598	248,304	77,706	45.5%
Severance Taxes	3,301,416	7,386,878	4,085,462	123.7%
Investment Income and Interest	3,005	4,302	1,297	43.2%
Alcohol Beverage 2% Wholesale Tax	290,898	238,669	(52,228)	-18.0%
SUBTOTAL (ONGOING RECEIPTS)	\$ 226,440,169	\$ 233,837,651	\$ 7,397,482	3.3%
ONE-TIME RECEIPTS				
One-Time Sales and Use Tax	-	3,312,731	3,312,731	N/A
Bank Franchise Tax Prior Year Revenue	596,705	129,457	(467,249)	-78.3%
SUBTOTAL (ONE-TIME RECEIPTS)	\$ 596,705	\$ 3,442,187	\$ (467,249)	476.9%
GRAND TOTAL	\$ 227,036,875	\$ 237,279,839	\$ 10,242,964	4.5%

**Actual Revenue FY2025 vs. Actual Revenue FY2026
Year-To-Date Through JANUARY FY2026 Comparison**

	Actual JANUARY YTD FY2025	Actual JANUARY YTD FY2026	DOLLAR CHANGE	YTD GROWTH OVER FY2025
ONGOING RECEIPTS				
Net Sales and Use Tax (excl. cost of admin)	888,673,715	934,287,630	45,613,915	5.1%
Lottery	101,256,006	102,906,121	1,650,115	1.6%
Net Contractor's Excise Tax	143,699,831	147,127,232	3,427,401	2.4%
Insurance Company Tax	70,819,515	81,427,031	10,607,516	15.0%
Unclaimed Property Receipts	102,131,744	61,384,827	(40,746,917)	-39.9%
Licenses, Permits, and Fees	39,071,784	25,865,685	(13,206,099)	-33.8%
Tobacco Taxes	27,293,133	26,678,298	(614,836)	-2.3%
Trust Funds	35,309,002	37,307,402	1,998,400	5.7%
Net Transfers In (excluding one-time)	15,795,543	15,049,814	(745,730)	-4.7%
Alcohol Beverage Tax	4,706,628	4,809,371	102,743	2.2%
Bank Franchise Tax	9,854,537	9,997,376	142,838	1.4%
Charges for Goods and Services	7,250,292	7,061,716	(188,576)	-2.6%
Telecommunications Tax	1,077,715	1,546,556	468,841	43.5%
Severance Taxes	11,497,963	18,873,703	7,375,740	64.1%
Investment Income and Interest	95,897,986	71,799,447	(24,098,538)	-25.1%
Alcohol Beverage 2% Wholesale Tax	1,886,570	1,903,006	16,437	0.9%
SUBTOTAL (ONGOING RECEIPTS)	\$ 1,556,221,963	\$ 1,548,025,214	\$ (8,196,750)	-0.5%
ONE-TIME RECEIPTS				
One-Time Sales and Use Tax	-	3,312,731	3,312,731	N/A
Bank Franchise Tax Prior Year Revenue	1,414,044	155,379	(1,258,665)	-89.0%
One-Time Unclaimed Property	176,321,347	-	(176,321,347)	-100.0%
SUBTOTAL (ONE-TIME RECEIPTS)	\$ 177,735,391	\$ 3,468,110	\$ (174,267,281)	-98.0%
GRAND TOTAL	\$ 1,733,957,355	\$ 1,551,493,324	\$ (182,464,031)	-10.5%

Ongoing State Sales and Use Tax (Excludes one-time receipts)



Legislative Adopted FY2026 Estimate (Feb. 2025) vs. Actual Revenues
JANUARY FY2026 Comparison

	Leg. Adopted JANUARY FY2026	Actual JANUARY FY2026	DOLLAR CHANGE	PERCENT CHANGE
ONGOING RECEIPTS				
Net Sales and Use Tax (excl. cost of admin)	143,284,554	151,491,945	8,207,392	5.7%
Lottery	15,146,839	14,683,845	(462,994)	-3.1%
Net Contractor's Excise Tax	23,067,720	22,717,852	(349,868)	-1.5%
Insurance Company Tax	16,902,414	17,896,180	993,766	5.9%
Unclaimed Property Receipts	-	-	0	N/A
Licenses, Permits, and Fees	14,952,688	10,468,038	(4,484,651)	-30.0%
Tobacco Taxes	3,203,079	3,628,838	425,759	13.3%
Trust Funds	-	-	0	N/A
Net Transfers In (excluding one-time)	1,277,818	951,533	(326,284)	-25.5%
Alcohol Beverage Tax	2,365,071	2,381,944	16,873	0.7%
Bank Franchise Tax	1,422,574	474,973	(947,601)	-66.6%
Charges for Goods and Services	1,241,384	1,264,348	22,964	1.8%
Telecommunications Tax	165,336	248,304	82,968	50.2%
Severance Taxes	3,996,850	7,386,878	3,390,028	84.8%
Investment Income and Interest	12,216	4,302	(7,914)	-64.8%
Alcohol Beverage 2% Wholesale Tax	275,479	238,669	(36,810)	-13.4%
TOTAL (ONGOING RECEIPTS)	\$ 227,314,023	\$ 233,837,651	\$ 6,523,628	2.9%
ONE-TIME RECEIPTS				
One-Time Sales and Use Tax	-	3,312,731	3,312,731	N/A
Bank Franchise Tax Prior Year Revenue	-	129,457	129,457	N/A
SUBTOTAL (ONE-TIME RECEIPTS)	\$ 0	\$ 3,442,187	\$ 3,442,187	N/A
GRAND TOTAL	\$ 227,314,023	\$ 237,279,839	\$ 9,965,816	4.4%

Legislative Adopted FY2026 Estimate (Feb. 2025) vs. Actual Revenues
Year-to-Date Through JANUARY FY2026 Comparison

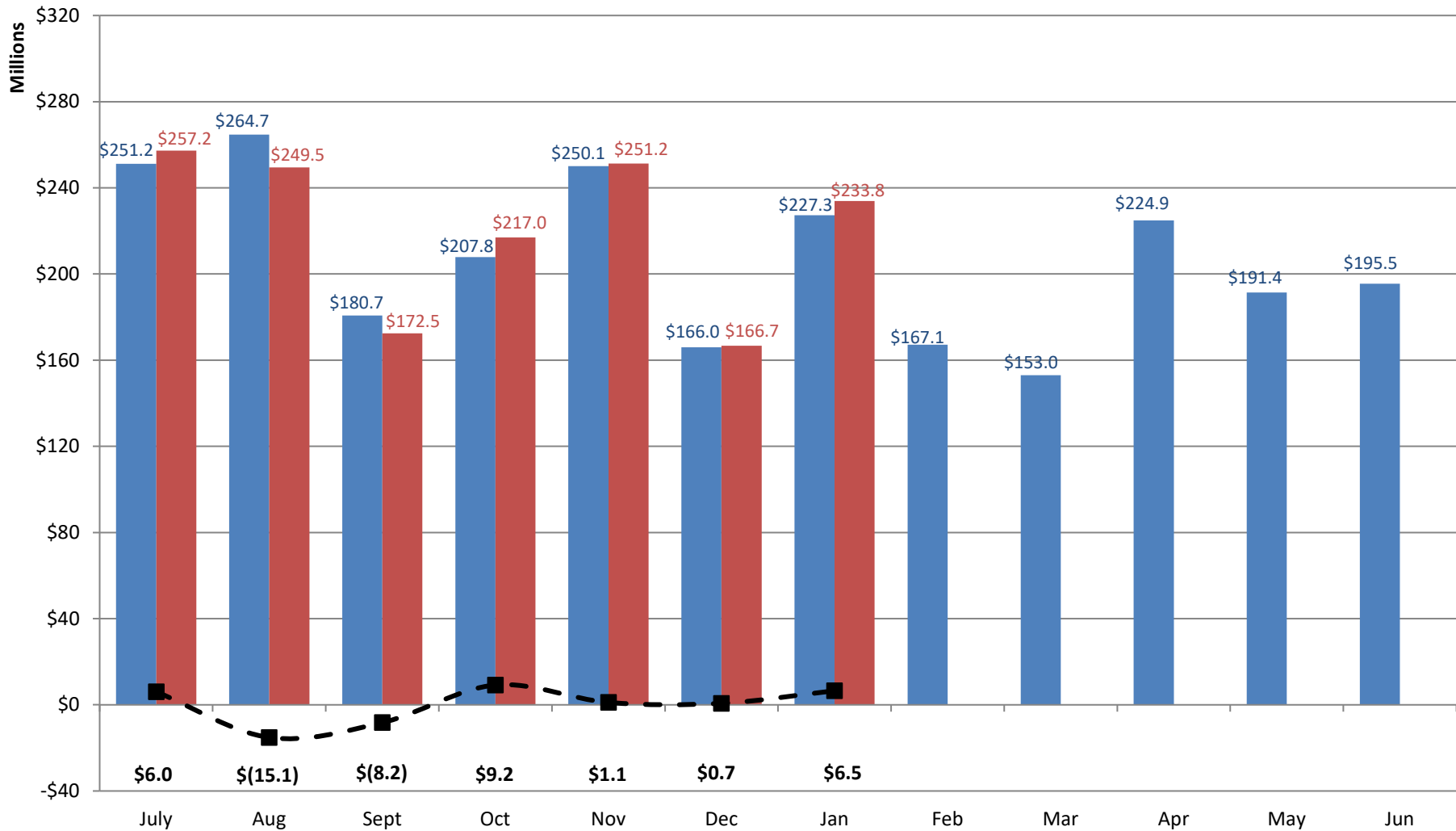
	Leg. Adopted JANUARY YTD FY2026	Actual JANUARY YTD FY2026	DOLLAR CHANGE	YTD % Chg. Actual/Adopt Comparison
ONGOING RECEIPTS				
Net Sales and Use Tax (excl. cost of admin)	926,499,008	934,287,630	7,788,622	0.8%
Lottery	103,979,385	102,906,121	(1,073,264)	-1.0%
Net Contractor's Excise Tax	149,070,729	147,127,232	(1,943,496)	-1.3%
Insurance Company Tax	81,957,815	81,427,031	(530,784)	-0.6%
Unclaimed Property Receipts	61,384,827	61,384,827	0	0.0%
Licenses, Permits, and Fees	29,463,146	25,865,685	(3,597,461)	-12.2%
Tobacco Taxes	26,396,363	26,678,298	281,935	1.1%
Trust Funds	37,300,000	37,307,402	7,402	0.0%
Net Transfers In (excluding one-time)	15,984,003	15,049,814	(934,189)	-5.8%
Alcohol Beverage Tax	4,887,374	4,809,371	(78,003)	-1.6%
Bank Franchise Tax	6,785,499	9,997,376	3,211,877	47.3%
Charges for Goods and Services	7,319,220	7,061,716	(257,504)	-3.5%
Telecommunications Tax	1,045,661	1,546,556	500,896	47.9%
Severance Taxes	12,581,440	18,873,703	6,292,262	50.0%
Investment Income and Interest	81,291,875	71,799,447	(9,492,427)	-11.7%
Alcohol Beverage 2% Wholesale Tax	1,931,895	1,903,006	(28,889)	-1.5%
SUBTOTAL (ONGOING RECEIPTS)	\$ 1,547,878,238	1,548,025,214	\$ 146,975	0.0%
ONE-TIME RECEIPTS				
One-Time Sales and Use Tax	-	3,312,731	3,312,731	N/A
Bank Franchise Tax Prior Year Revenue	-	155,379	155,379	N/A
SUBTOTAL (ONE-TIME RECEIPTS)	\$ 0	\$ 3,468,110	\$ 3,468,110	N/A
GRAND TOTAL	\$ 1,547,878,238	\$ 1,551,493,324	\$ 3,615,085	0.2%

Legislative Adopted FY2026 vs. Actual FY2026 Receipts

■ Leg. Adopted FY2026 Receipts

■ Actual FY2026 Receipts

—■— Actual vs. Adopted



Through 7 months, total ongoing receipts are \$0.1 million MORE than the Legislative Adopted FY2026 estimate.

Governor's Revised FY2026 Estimate (Nov. 2025) vs. Actual Revenues
JANUARY FY2026 Comparison

	Gov. Revised JANUARY FY2026	Actual JANUARY FY2026	DOLLAR CHANGE	MTD % Chg. Actual/Revised Comparison
ONGOING RECEIPTS				
Net Sales and Use Tax (excl. cost of admin)	141,630,538	151,491,945	9,861,408	7.0%
Lottery	14,681,491	14,683,845	2,354	0.0%
Net Contractor's Excise Tax	23,158,496	22,717,852	(440,644)	-1.9%
Insurance Company Tax	17,529,281	17,896,180	366,899	2.1%
Unclaimed Property Receipts	-	-	0	N/A
Licenses, Permits, and Fees	14,747,696	10,468,038	(4,279,658)	-29.0%
Tobacco Taxes	3,034,740	3,628,838	594,098	19.6%
Trust Funds	-	-	0	N/A
Net Transfers In (excluding one-time)	1,308,950	951,533	(357,417)	-27.3%
Alcohol Beverage Tax	2,339,204	2,381,944	42,740	1.8%
Bank Franchise Tax	1,587,564	474,973	(1,112,591)	-70.1%
Charges for Goods and Services	1,271,697	1,264,348	(7,348)	-0.6%
Telecommunications Tax	227,962	248,304	20,343	8.9%
Severance Taxes	5,781,202	7,386,878	1,605,676	27.8%
Investment Income and Interest	10,327	4,302	(6,025)	-58.3%
Alcohol Beverage 2% Wholesale Tax	260,074	238,669	(21,405)	-8.2%
TOTAL (ONGOING RECEIPTS)	\$ 227,569,221	\$ 233,837,651	\$ 6,268,430	2.8%
ONE-TIME RECEIPTS				
One-Time Sales and Use Tax	-	3,312,731	3,312,731	N/A
Bank Franchise Tax Prior Year Revenue	-	129,457	129,457	N/A
SUBTOTAL (ONE-TIME RECEIPTS)	\$ 0	\$ 3,442,187	\$ 3,442,187	N/A
GRAND TOTAL	\$ 227,569,221	\$ 237,279,839	\$ 9,710,618	4.3%

Governor's Revised FY2026 Estimate (Nov. 2025) vs. Actual Revenues
Year-To-Date Through JANUARY FY2026 Comparison

	Gov. Revised JANUARY YTD FY2026	Actual JANUARY YTD FY2026	DOLLAR CHANGE	YTD % Chg. Actual/Revised Comparison
ONGOING RECEIPTS				
Net Sales and Use Tax (excl. cost of admin)	923,776,427	934,287,630	10,511,203	1.1%
Lottery	102,775,685	102,906,121	130,436	0.1%
Net Contractor's Excise Tax	148,756,912	147,127,232	(1,629,680)	-1.1%
Insurance Company Tax	79,975,640	81,427,031	1,451,391	1.8%
Unclaimed Property Receipts	61,384,827	61,384,827	0	0.0%
Licenses, Permits, and Fees	29,789,027	25,865,685	(3,923,343)	-13.2%
Tobacco Taxes	25,515,484	26,678,298	1,162,813	4.6%
Trust Funds	37,307,402	37,307,402	0	0.0%
Net Transfers In (excluding one-time)	15,985,143	15,049,814	(935,329)	-5.9%
Alcohol Beverage Tax	4,776,184	4,809,371	33,186	0.7%
Bank Franchise Tax	9,149,537	9,997,376	847,839	9.3%
Charges for Goods and Services	7,180,379	7,061,716	(118,664)	-1.7%
Telecommunications Tax	1,489,267	1,546,556	57,289	3.8%
Severance Taxes	17,970,704	18,873,703	902,999	5.0%
Investment Income and Interest	71,801,373	71,799,447	(1,926)	0.0%
Alcohol Beverage 2% Wholesale Tax	1,918,138	1,903,006	(15,132)	-0.8%
SUBTOTAL (ONGOING RECEIPTS)	\$ 1,539,552,130	\$ 1,548,025,214	\$ 8,473,084	0.6%
ONE-TIME RECEIPTS				
One-Time Sales and Use Tax	-	3,312,731	3,312,731	N/A
Bank Franchise Tax Prior Year Revenue	25,923	155,379	129,457	499.4%
SUBTOTAL (ONE-TIME RECEIPTS)	\$ 25,923	\$ 3,468,110	\$ 3,442,187	13278.7%
GRAND TOTAL	\$ 1,539,578,053	\$ 1,551,493,324	\$ 11,915,271	0.8%