

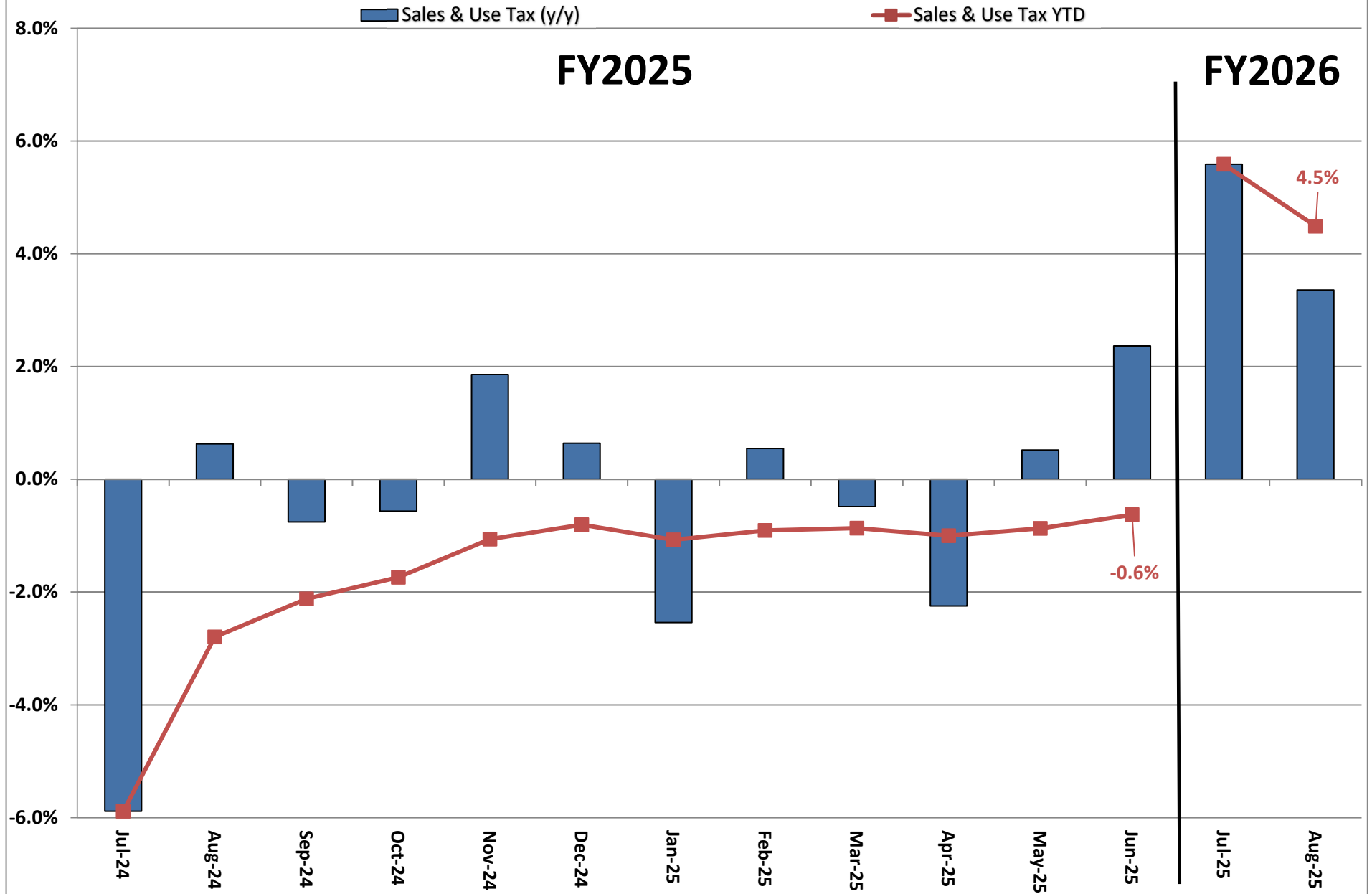
**Actual Revenue FY2025 vs. Actual Revenue FY2026
AUGUST FY2026 Comparison**

	Actual AUGUST FY2025	Actual AUGUST FY2026	DOLLAR CHANGE	PERCENT CHANGE
ONGOING RECEIPTS				
Net Sales and Use Tax (excl. cost of admin)	126,067,337	130,296,855	4,229,518	3.4%
Lottery	13,439,393	14,109,611	670,219	5.0%
Net Contractor's Excise Tax	18,745,289	18,995,757	250,469	1.3%
Insurance Company Tax	5,501,412	4,067,769	(1,433,643)	-26.1%
Unclaimed Property Receipts	(2,156,193)	-	2,156,193	-100.0%
Licenses, Permits, and Fees	145,801	135,726	(10,075)	-6.9%
Tobacco Taxes	5,080,508	4,112,148	(968,361)	-19.1%
Trust Funds	-	-	0	N/A
Net Transfers In (excluding one-time)	1,469,906	1,624,645	154,739	10.5%
Alcohol Beverage Tax	15,908	6,950	(8,958)	-56.3%
Bank Franchise Tax	(167,908)	3,012,386	3,180,294	N/A
Charges for Goods and Services	877,794	778,970	(98,824)	-11.3%
Telecommunications Tax	190,356	270,861	80,505	42.3%
Severance Taxes	2,256,017	107,467	(2,148,551)	-95.2%
Investment Income and Interest	95,856,161	71,752,415	(24,103,745)	-25.1%
Alcohol Beverage 2% Wholesale Tax	259,671	253,856	(5,814)	-2.2%
SUBTOTAL (ONGOING RECEIPTS)	\$ 267,581,451	\$ 249,525,416	\$ (18,056,035)	-6.7%
ONE-TIME RECEIPTS				
Bank Franchise Tax Prior Year Revenue	24,100	-	(24,100)	-100.0%
SUBTOTAL (ONE-TIME RECEIPTS)	\$ 24,100	\$ 0	\$ (24,100)	-100.0%
GRAND TOTAL	\$ 267,605,551	\$ 249,525,416	\$ (18,080,135)	-6.8%

**Actual Revenue FY2025 vs. Actual Revenue FY2026
Year-To-Date Through AUGUST FY2026 Comparison**

	Actual AUGUST YTD FY2025	Actual AUGUST YTD FY2026	DOLLAR CHANGE	YTD GROWTH OVER FY2025
ONGOING RECEIPTS				
Net Sales and Use Tax (excl. cost of admin)	256,565,904	268,086,141	11,520,237	4.5%
Lottery	26,445,717	27,257,902	812,185	3.1%
Net Contractor's Excise Tax	38,874,761	41,380,940	2,506,179	6.4%
Insurance Company Tax	27,594,654	30,737,953	3,143,299	11.4%
Unclaimed Property Receipts	(4,971,004)	-	4,971,004	-100.0%
Licenses, Permits, and Fees	1,196,321	329,558	(866,763)	-72.5%
Tobacco Taxes	8,981,643	8,305,487	(676,156)	-7.5%
Trust Funds	35,309,002	37,307,402	1,998,400	5.7%
Net Transfers In (excluding one-time)	10,095,767	10,183,175	87,408	0.9%
Alcohol Beverage Tax	19,479	23,213	3,733	19.2%
Bank Franchise Tax	(53,668)	3,386,207	3,439,875	N/A
Charges for Goods and Services	1,815,132	2,129,260	314,127	17.3%
Telecommunications Tax	190,356	270,861	80,505	42.3%
Severance Taxes	2,606,810	5,033,995	2,427,186	93.1%
Investment Income and Interest	95,856,809	71,753,050	(24,103,759)	-25.1%
Alcohol Beverage 2% Wholesale Tax	554,428	560,478	6,050	1.1%
SUBTOTAL (ONGOING RECEIPTS)	\$ 501,082,111	\$ 506,745,622	\$ 5,663,511	1.1%
ONE-TIME RECEIPTS				
Bank Franchise Tax Prior Year Revenue	28,996	2,795	(26,201)	-90.4%
SUBTOTAL (ONE-TIME RECEIPTS)	\$ 28,996	\$ 2,795	\$ (26,201)	-90.4%
GRAND TOTAL	\$ 501,111,106	\$ 506,748,417	\$ 5,637,310	1.1%

Ongoing State Sales and Use Tax (Excludes one-time receipts)



Legislative Adopted FY2026 Estimate (Feb. 2025) vs. Actual Revenues
AUGUST FY2026 Comparison

	Leg. Adopted AUGUST FY2026	Actual AUGUST FY2026	DOLLAR CHANGE	PERCENT CHANGE
ONGOING RECEIPTS				
Net Sales and Use Tax (excl. cost of admin)	132,692,217	130,296,855	(2,395,362)	-1.8%
Lottery	14,032,017	14,109,611	77,595	0.6%
Net Contractor's Excise Tax	19,858,387	18,995,757	(862,630)	-4.3%
Insurance Company Tax	7,059,483	4,067,769	(2,991,714)	-42.4%
Unclaimed Property Receipts	-	-	0	N/A
Licenses, Permits, and Fees	622,342	135,726	(486,616)	-78.2%
Tobacco Taxes	4,406,719	4,112,148	(294,571)	-6.7%
Trust Funds	-	-	0	N/A
Net Transfers In (excluding one-time)	1,202,231	1,624,645	422,413	35.1%
Alcohol Beverage Tax	7,505	6,950	(555)	-7.4%
Bank Franchise Tax	492,974	3,012,386	2,519,412	511.1%
Charges for Goods and Services	893,519	778,970	(114,548)	-12.8%
Telecommunications Tax	181,356	270,861	89,505	49.4%
Severance Taxes	1,687,947	107,467	(1,580,481)	-93.6%
Investment Income and Interest	81,251,689	71,752,415	(9,499,274)	-11.7%
Alcohol Beverage 2% Wholesale Tax	285,615	253,856	(31,759)	-11.1%
TOTAL (ONGOING RECEIPTS)	\$ 264,674,000	\$ 249,525,416	\$ (15,148,584)	-5.7%

Legislative Adopted FY2026 Estimate (Feb. 2025) vs. Actual Revenues
Year-to-Date Through AUGUST FY2026 Comparison

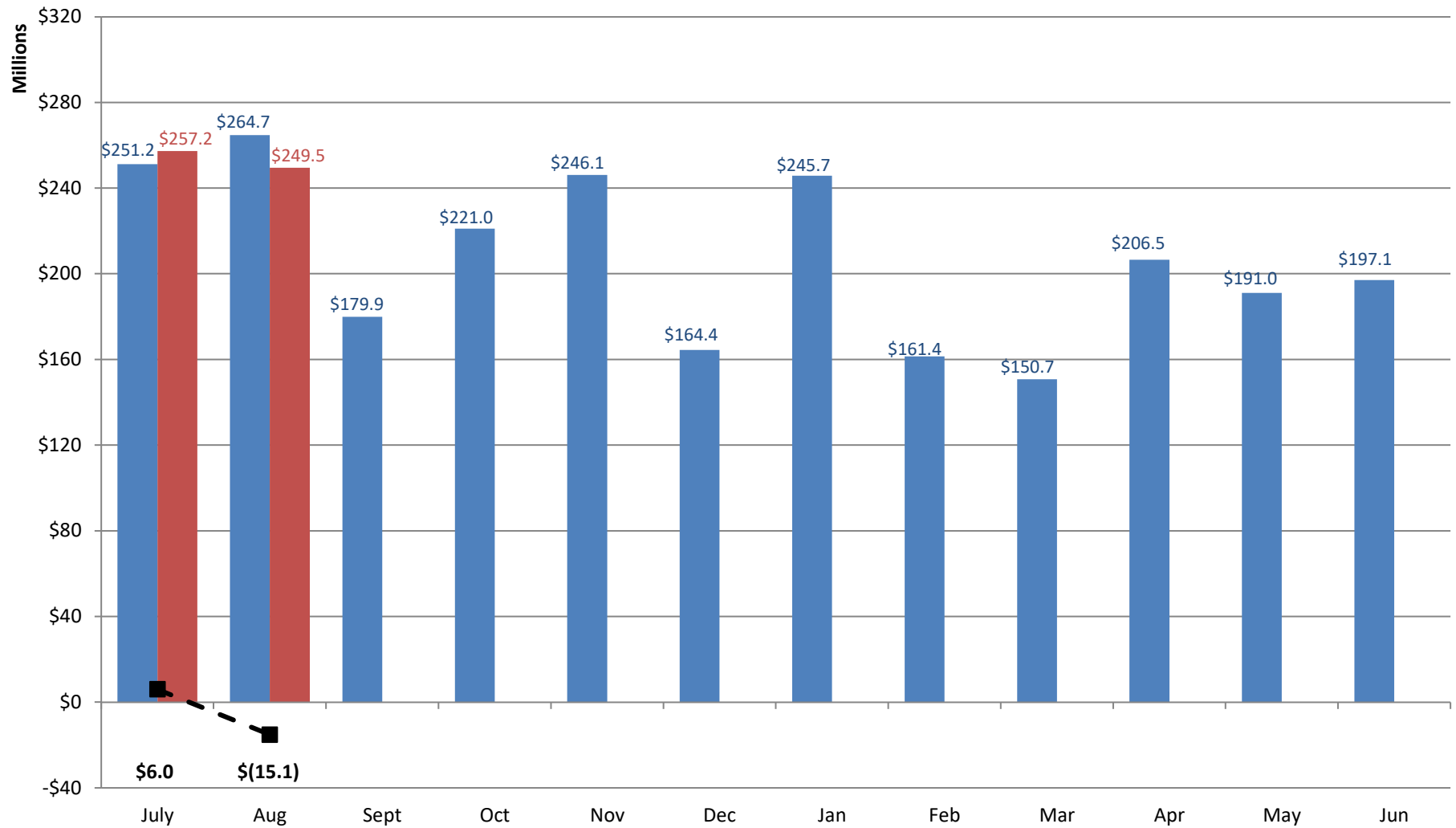
	Leg. Adopted AUGUST YTD FY2026	Actual AUGUST YTD FY2026	DOLLAR CHANGE	YTD % Chg. Actual/Adopt Comparison
ONGOING RECEIPTS				
Net Sales and Use Tax (excl. cost of admin)	270,241,306	268,086,141	(2,155,165)	-0.8%
Lottery	27,554,792	27,257,902	(296,890)	-1.1%
Net Contractor's Excise Tax	41,183,667	41,380,940	197,273	0.5%
Insurance Company Tax	30,765,208	30,737,953	(27,256)	-0.1%
Unclaimed Property Receipts	-	-	0	N/A
Licenses, Permits, and Fees	1,507,849	329,558	(1,178,291)	-78.1%
Tobacco Taxes	8,593,821	8,305,487	(288,334)	-3.4%
Trust Funds	37,300,000	37,307,402	7,402	0.0%
Net Transfers In (excluding one-time)	10,456,460	10,183,175	(273,285)	-2.6%
Alcohol Beverage Tax	24,122	23,213	(909)	-3.8%
Bank Franchise Tax	951,444	3,386,207	2,434,764	255.9%
Charges for Goods and Services	1,901,618	2,129,260	227,641	12.0%
Telecommunications Tax	181,356	270,861	89,505	49.4%
Severance Taxes	3,408,984	5,033,995	1,625,012	47.7%
Investment Income and Interest	81,253,483	71,753,050	(9,500,433)	-11.7%
Alcohol Beverage 2% Wholesale Tax	534,101	560,478	26,377	4.9%
SUBTOTAL (ONGOING RECEIPTS)	\$ 515,858,210	506,745,622	\$ (9,112,588)	-1.8%
ONE-TIME RECEIPTS				
Bank Franchise Tax Prior Year Revenue	-	2,795	2,795	N/A
SUBTOTAL (ONE-TIME RECEIPTS)	\$ 0	\$ 2,795	\$ 2,795	N/A
GRAND TOTAL	\$ 515,858,210	\$ 506,748,417	\$ (9,109,794)	-1.8%

Legislative Adopted FY2026 vs. Actual FY2026 Receipts

■ Leg. Adopted FY2026 Receipts

■ Actual FY2026 Receipts

■ Actual vs. Adopted



Through 2 months, total ongoing receipts are \$9.1 million LESS than the Legislative Adopted FY2026 estimate.