

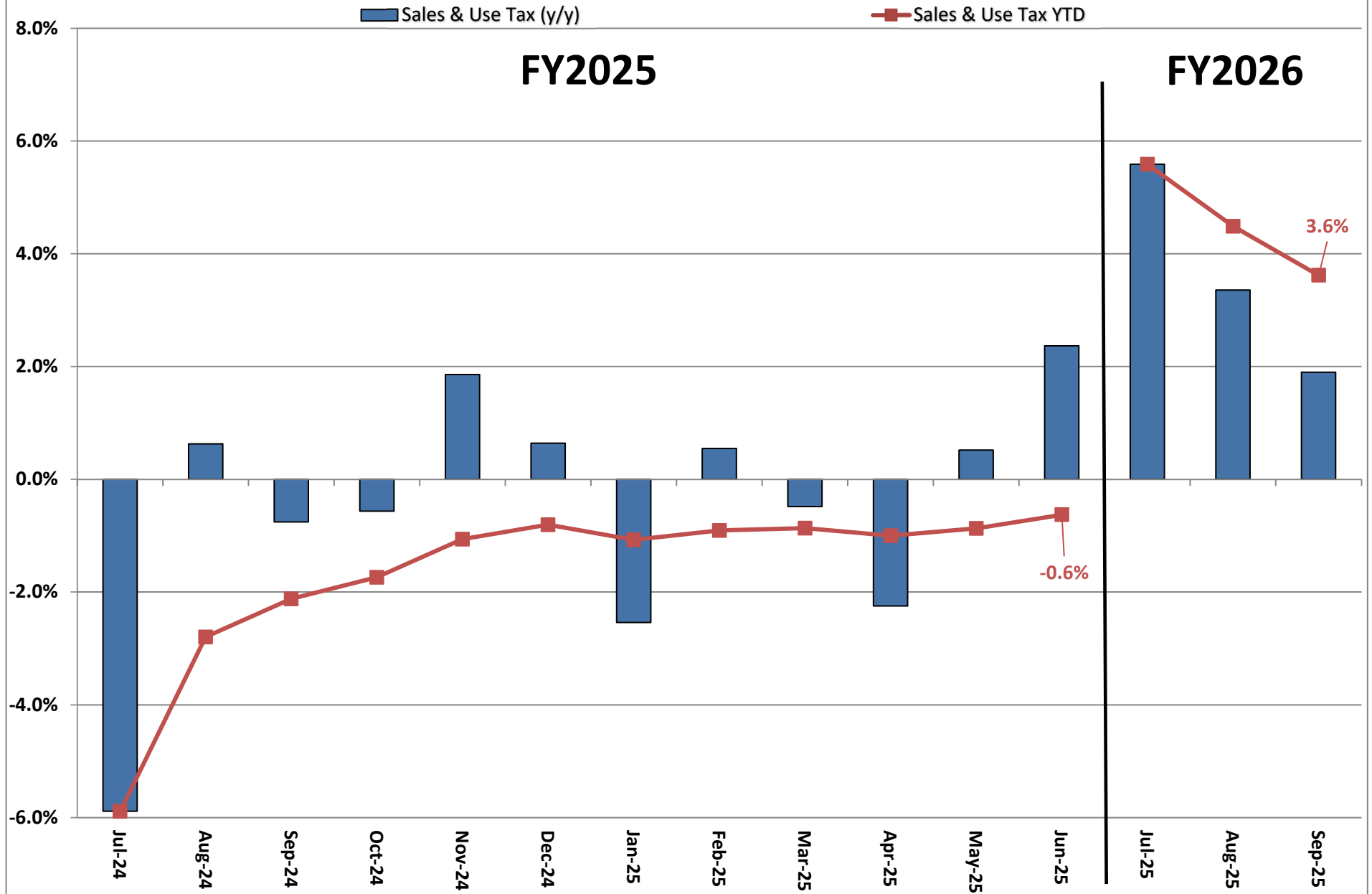
**Actual Revenue FY2025 vs. Actual Revenue FY2026
SEPTEMBER FY2026 Comparison**

	Actual SEPTEMBER FY2025	Actual SEPTEMBER FY2026	DOLLAR CHANGE	PERCENT CHANGE
ONGOING RECEIPTS				
Net Sales and Use Tax (excl. cost of admin)	129,587,850	132,048,237	2,460,387	1.9%
Lottery	13,730,333	13,837,927	107,594	0.8%
Net Contractor's Excise Tax	19,700,179	19,158,132	(542,047)	-2.8%
Insurance Company Tax	1,041,848	543,364	(498,484)	-47.8%
Unclaimed Property Receipts	(7,810,348)	-	7,810,348	-100.0%
Licenses, Permits, and Fees	118,045	154,199	36,153	30.6%
Tobacco Taxes	3,654,333	3,751,338	97,005	2.7%
Trust Funds	-	-	0	N/A
Net Transfers In (excluding one-time)	903,968	830,146	(73,822)	-8.2%
Alcohol Beverage Tax	7,670	1,173	(6,497)	-84.7%
Bank Franchise Tax	282,364	752,980	470,616	166.7%
Charges for Goods and Services	907,227	911,739	4,512	0.5%
Telecommunications Tax	174,898	253,143	78,245	44.7%
Severance Taxes	-	-	-	N/A
Investment Income and Interest	3,031	31,893	28,862	952.3%
Alcohol Beverage 2% Wholesale Tax	233,132	225,285	(7,846)	-3.4%
SUBTOTAL (ONGOING RECEIPTS)	\$ 162,534,530	\$ 172,499,555	\$ 9,965,025	6.1%
ONE-TIME RECEIPTS				
Bank Franchise Tax Prior Year Revenue	25,694	-	(25,694)	-100.0%
SUBTOTAL (ONE-TIME RECEIPTS)	\$ 25,694	\$ 0	\$ (25,694)	-100.0%
GRAND TOTAL	\$ 162,560,225	\$ 172,499,555	\$ 9,939,331	6.1%

Actual Revenue FY2025 vs. Actual Revenue FY2026
Year-To-Date Through SEPTEMBER FY2026 Comparison

	Actual SEPTEMBER YTD FY2025	Actual SEPTEMBER YTD FY2026	DOLLAR CHANGE	YTD GROWTH OVER FY2025
ONGOING RECEIPTS				
Net Sales and Use Tax (excl. cost of admin)	386,153,754	400,134,379	13,980,624	3.6%
Lottery	40,176,051	41,095,830	919,779	2.3%
Net Contractor's Excise Tax	58,574,939	60,539,071	1,964,132	3.4%
Insurance Company Tax	28,636,502	31,281,317	2,644,815	9.2%
Unclaimed Property Receipts	(12,781,352)	-	12,781,352	-100.0%
Licenses, Permits, and Fees	1,314,367	483,757	(830,610)	-63.2%
Tobacco Taxes	12,635,976	12,056,825	(579,151)	-4.6%
Trust Funds	35,309,002	37,307,402	1,998,400	5.7%
Net Transfers In (excluding one-time)	10,999,735	11,013,321	13,586	0.1%
Alcohol Beverage Tax	27,150	24,386	(2,764)	-10.2%
Bank Franchise Tax	228,696	4,139,187	3,910,491	1709.9%
Charges for Goods and Services	2,722,359	3,040,998	318,639	11.7%
Telecommunications Tax	365,254	524,004	158,750	43.5%
Severance Taxes	2,606,810	5,033,995	2,427,186	93.1%
Investment Income and Interest	95,859,840	71,784,943	(24,074,897)	-25.1%
Alcohol Beverage 2% Wholesale Tax	787,560	785,764	(1,796)	-0.2%
SUBTOTAL (ONGOING RECEIPTS)	\$ 663,616,641	\$ 679,245,177	\$ 15,628,536	2.4%
ONE-TIME RECEIPTS				
Bank Franchise Tax Prior Year Revenue	54,690	2,795	(51,895)	-94.9%
SUBTOTAL (ONE-TIME RECEIPTS)	\$ 54,690	\$ 2,795	\$ (51,895)	-94.9%
GRAND TOTAL	\$ 663,671,331	\$ 679,247,972	\$ 15,576,641	2.3%

Ongoing State Sales and Use Tax (Excludes one-time receipts)



Legislative Adopted FY2026 Estimate (Feb. 2025) vs. Actual Revenues
SEPTEMBER FY2026 Comparison

	Leg. Adopted SEPTEMBER FY2026	Actual SEPTEMBER FY2026	DOLLAR CHANGE	PERCENT CHANGE
ONGOING RECEIPTS				
Net Sales and Use Tax (excl. cost of admin)	135,982,197	132,048,237	(3,933,960)	-2.9%
Lottery	14,223,132	13,837,927	(385,205)	-2.7%
Net Contractor's Excise Tax	21,983,721	19,158,132	(2,825,589)	-12.9%
Insurance Company Tax	671,438	543,364	(128,074)	-19.1%
Unclaimed Property Receipts	-	-	0	N/A
Licenses, Permits, and Fees	507,850	154,199	(353,652)	-69.6%
Tobacco Taxes	3,892,493	3,751,338	(141,155)	-3.6%
Trust Funds	-	-	0	N/A
Net Transfers In (excluding one-time)	1,135,447	830,146	(305,301)	-26.9%
Alcohol Beverage Tax	8,438	1,173	(7,264)	-86.1%
Bank Franchise Tax	887,016	752,980	(134,036)	-15.1%
Charges for Goods and Services	1,004,400	911,739	(92,661)	-9.2%
Telecommunications Tax	173,736	253,143	79,407	45.7%
Severance Taxes	365	-	(365)	-100.0%
Investment Income and Interest	2,434	31,893	29,459	1210.3%
Alcohol Beverage 2% Wholesale Tax	272,168	225,285	(46,882)	-17.2%
TOTAL (ONGOING RECEIPTS)	\$ 180,744,835	\$ 172,499,555	\$ (8,245,280)	-4.6%

Legislative Adopted FY2026 Estimate (Feb. 2025) vs. Actual Revenues
Year-to-Date Through SEPTEMBER FY2026 Comparison

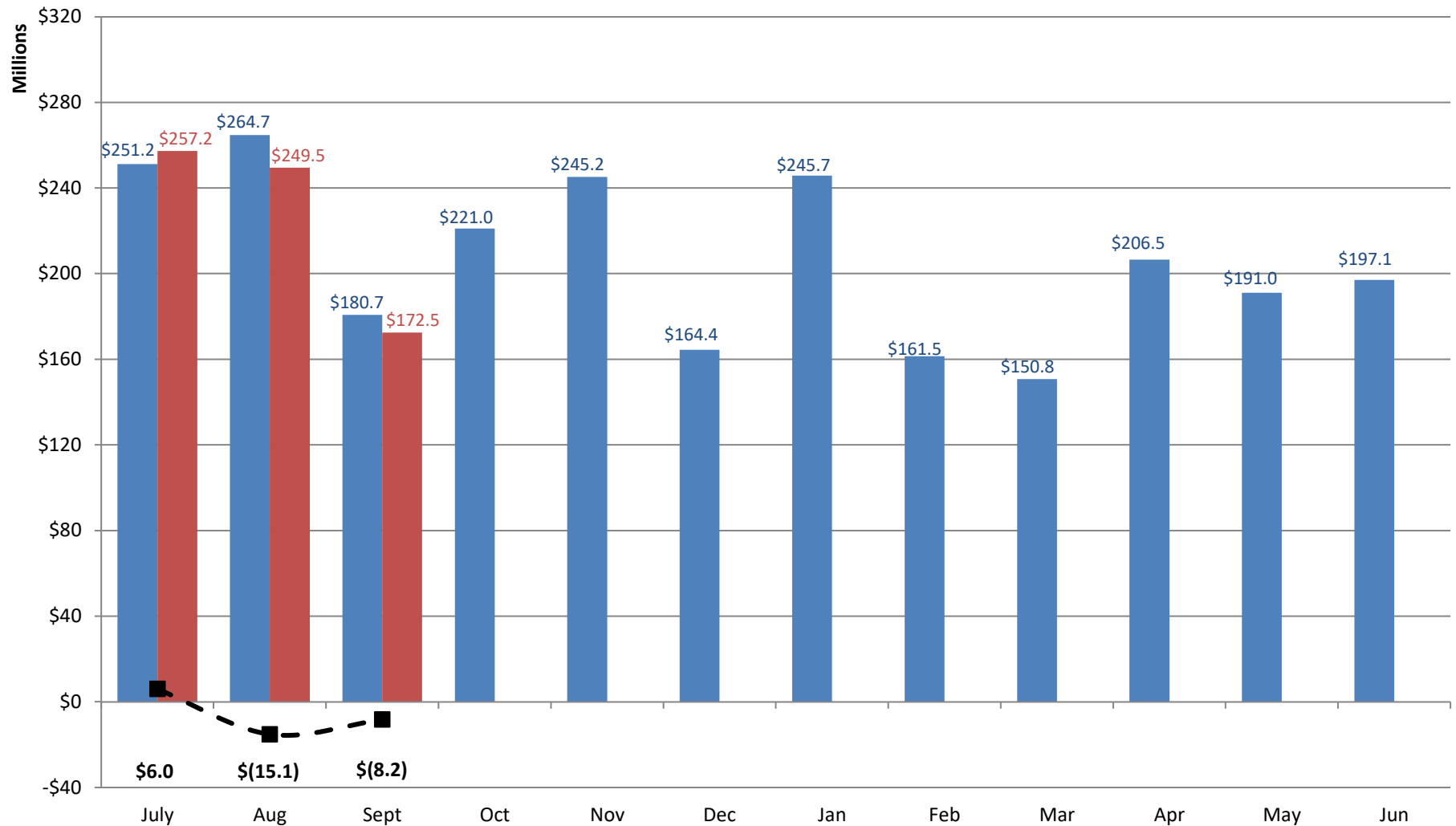
	Leg. Adopted SEPTEMBER YTD FY2026	Actual SEPTEMBER YTD FY2026	DOLLAR CHANGE	YTD % Chg. Actual/Adopt Comparison
ONGOING RECEIPTS				
Net Sales and Use Tax (excl. cost of admin)	406,223,503	400,134,379	(6,089,124)	-1.5%
Lottery	41,777,924	41,095,830	(682,095)	-1.6%
Net Contractor's Excise Tax	63,167,388	60,539,071	(2,628,316)	-4.2%
Insurance Company Tax	31,436,646	31,281,317	(155,329)	-0.5%
Unclaimed Property Receipts	-	-	0	N/A
Licenses, Permits, and Fees	2,015,699	483,757	(1,531,943)	-76.0%
Tobacco Taxes	12,486,314	12,056,825	(429,489)	-3.4%
Trust Funds	37,300,000	37,307,402	7,402	0.0%
Net Transfers In (excluding one-time)	11,591,907	11,013,321	(578,586)	-5.0%
Alcohol Beverage Tax	32,560	24,386	(8,174)	-25.1%
Bank Franchise Tax	1,838,460	4,139,187	2,300,727	125.1%
Charges for Goods and Services	2,906,018	3,040,998	134,980	4.6%
Telecommunications Tax	355,092	524,004	168,912	47.6%
Severance Taxes	3,409,349	5,033,995	1,624,646	47.7%
Investment Income and Interest	81,255,917	71,784,943	(9,470,974)	-11.7%
Alcohol Beverage 2% Wholesale Tax	806,269	785,764	(20,505)	-2.5%
SUBTOTAL (ONGOING RECEIPTS)	\$ 696,603,045	679,245,177	\$ (17,357,868)	-2.5%
ONE-TIME RECEIPTS				
Bank Franchise Tax Prior Year Revenue	-	2,795	2,795	N/A
SUBTOTAL (ONE-TIME RECEIPTS)	\$ 0	\$ 2,795	\$ 2,795	N/A
GRAND TOTAL	\$ 696,603,045	\$ 679,247,972	\$ (17,355,073)	-2.5%

Legislative Adopted FY2026 vs. Actual FY2026 Receipts

■ Leg. Adopted FY2026 Receipts

■ Actual FY2026 Receipts

—■— Actual vs. Adopted



Through 3 months, total ongoing receipts are \$17.4 million LESS than the Legislative Adopted FY2026 estimate.