

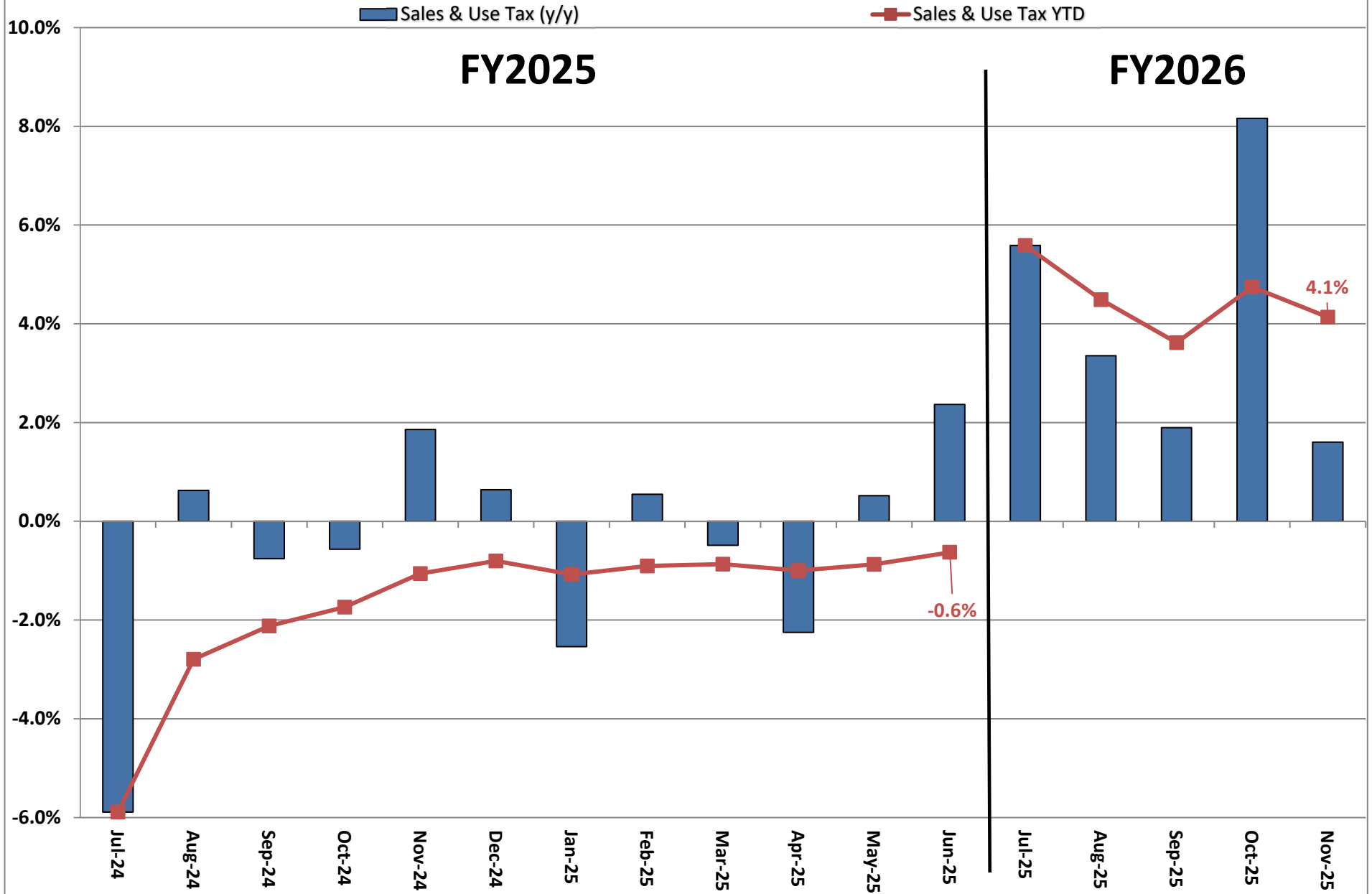
**Actual Revenue FY2025 vs. Actual Revenue FY2026  
NOVEMBER FY2026 Comparison**

	<b>Actual NOVEMBER FY2025</b>	<b>Actual NOVEMBER FY2026</b>	<b>DOLLAR CHANGE</b>	<b>PERCENT CHANGE</b>
<b>ONGOING RECEIPTS</b>				
Net Sales and Use Tax (excl. cost of admin)	123,749,434	125,733,654	1,984,220	1.6%
Lottery	14,482,886	14,601,796	118,910	0.8%
Net Contractor's Excise Tax	21,384,798	21,183,621	(201,176)	-0.9%
Insurance Company Tax	8,167,125	21,760,433	13,593,308	166.4%
Unclaimed Property Receipts	115,810,814	61,384,827	(54,425,987)	-47.0%
Licenses, Permits, and Fees	521,991	464,978	(57,013)	-10.9%
Tobacco Taxes	3,140,981	3,185,829	44,848	1.4%
Trust Funds	-	-	0	N/A
Net Transfers In (excluding one-time)	726,054	1,132,344	406,290	56.0%
Alcohol Beverage Tax	9,600	4,684	(4,916)	-51.2%
Bank Franchise Tax	438,206	462,548	24,342	5.6%
Charges for Goods and Services	1,257,935	794,285	(463,651)	-36.9%
Telecommunications Tax	193,922	263,497	69,575	35.9%
Severance Taxes	5,389,387	-	(5,389,387)	-100.0%
Investment Income and Interest	651	4,253	3,602	553.3%
Alcohol Beverage 2% Wholesale Tax	260,351	251,275	(9,076)	-3.5%
<b>SUBTOTAL (ONGOING RECEIPTS)</b>	<b>\$ 295,534,134</b>	<b>\$ 251,228,024</b>	<b>\$ (44,306,110)</b>	<b>-15.0%</b>
<b>ONE-TIME RECEIPTS</b>				
Bank Franchise Tax Prior Year Revenue	162,294	-	(162,294)	-100.0%
One-Time Unclaimed Property	176,321,347	-	(176,321,347)	-100.0%
<b>SUBTOTAL (ONE-TIME RECEIPTS)</b>	<b>\$ 176,483,641</b>	<b>\$ 0</b>	<b>\$ (176,483,641)</b>	<b>-100.0%</b>
<b>GRAND TOTAL</b>	<b>\$ 472,017,774</b>	<b>\$ 251,228,024</b>	<b>\$ (220,789,751)</b>	<b>-46.8%</b>

**Actual Revenue FY2025 vs. Actual Revenue FY2026**  
**Year-To-Date Through NOVEMBER FY2026 Comparison**

	<b>Actual NOVEMBER YTD FY2025</b>	<b>Actual NOVEMBER YTD FY2026</b>	<b>DOLLAR CHANGE</b>	<b>YTD GROWTH OVER FY2025</b>
<b>ONGOING RECEIPTS</b>				
Net Sales and Use Tax (excl. cost of admin)	637,170,196	663,519,398	26,349,202	4.1%
Lottery	74,148,539	75,093,725	945,186	1.3%
Net Contractor's Excise Tax	102,591,198	106,357,184	3,765,986	3.7%
Insurance Company Tax	56,357,186	61,474,190	5,117,004	9.1%
Unclaimed Property Receipts	104,792,492	61,384,827	(43,407,665)	-41.4%
Licenses, Permits, and Fees	2,046,224	11,452,802	9,406,578	459.7%
Tobacco Taxes	20,345,576	19,233,251	(1,112,325)	-5.5%
Trust Funds	35,309,002	37,307,402	1,998,400	5.7%
Net Transfers In (excluding one-time)	13,235,882	13,712,400	476,518	3.6%
Alcohol Beverage Tax	2,463,517	2,422,699	(40,817)	-1.7%
Bank Franchise Tax	4,005,241	5,121,730	1,116,489	27.9%
Charges for Goods and Services	5,037,714	4,738,421	(299,293)	-5.9%
Telecommunications Tax	732,061	1,042,998	310,937	42.5%
Severance Taxes	8,194,627	11,485,947	3,291,320	40.2%
Investment Income and Interest	95,892,631	71,791,448	(24,101,184)	-25.1%
Alcohol Beverage 2% Wholesale Tax	1,300,112	1,336,644	36,533	2.8%
<b>SUBTOTAL (ONGOING RECEIPTS)</b>	<b>\$ 1,163,622,198</b>	<b>\$ 1,147,475,068</b>	<b>\$ (16,147,131)</b>	<b>-1.4%</b>
<b>ONE-TIME RECEIPTS</b>				
Bank Franchise Tax Prior Year Revenue	216,984	25,923	(191,061)	-88.1%
One-Time Unclaimed Property	176,321,347	-	(176,321,347)	-100.0%
<b>SUBTOTAL (ONE-TIME RECEIPTS)</b>	<b>\$ 176,538,331</b>	<b>\$ 25,923</b>	<b>\$ (176,512,408)</b>	<b>-100.0%</b>
<b>GRAND TOTAL</b>	<b>\$ 1,340,160,529</b>	<b>\$ 1,147,500,990</b>	<b>\$ (192,659,539)</b>	<b>-14.4%</b>

# Ongoing State Sales and Use Tax (Excludes one-time receipts)



**Legislative Adopted FY2026 Estimate (Feb. 2025) vs. Actual Revenues**  
**NOVEMBER FY2026 Comparison**

	<b>Leg. Adopted NOVEMBER FY2026</b>	<b>Actual NOVEMBER FY2026</b>	<b>DOLLAR CHANGE</b>	<b>PERCENT CHANGE</b>
<b>ONGOING RECEIPTS</b>				
Net Sales and Use Tax (excl. cost of admin)	125,920,101	125,733,654	(186,447)	-0.1%
Lottery	14,353,414	14,601,796	248,382	1.7%
Net Contractor's Excise Tax	21,400,563	21,183,621	(216,942)	-1.0%
Insurance Company Tax	16,704,657	21,760,433	5,055,776	30.3%
Unclaimed Property Receipts	61,384,827	61,384,827	0	0.0%
Licenses, Permits, and Fees	949,688	464,978	(484,710)	-51.0%
Tobacco Taxes	3,272,125	3,185,829	(86,296)	-2.6%
Trust Funds	-	-	0	N/A
Net Transfers In (excluding one-time)	1,082,566	1,132,344	49,778	4.6%
Alcohol Beverage Tax	11,196	4,684	(6,512)	-58.2%
Bank Franchise Tax	748,193	462,548	(285,645)	-38.2%
Charges for Goods and Services	1,018,866	794,285	(224,582)	-22.0%
Telecommunications Tax	180,437	263,497	83,060	46.0%
Severance Taxes	2,823,208	-	(2,823,208)	-100.0%
Investment Income and Interest	1,826	4,253	2,427	132.9%
Alcohol Beverage 2% Wholesale Tax	270,554	251,275	(19,279)	-7.1%
<b>TOTAL (ONGOING RECEIPTS)</b>	<b>\$ 250,122,222</b>	<b>\$ 251,228,024</b>	<b>\$ 1,105,802</b>	<b>0.4%</b>

**Legislative Adopted FY2026 Estimate (Feb. 2025) vs. Actual Revenues**  
**Year-to-Date Through NOVEMBER FY2026 Comparison**

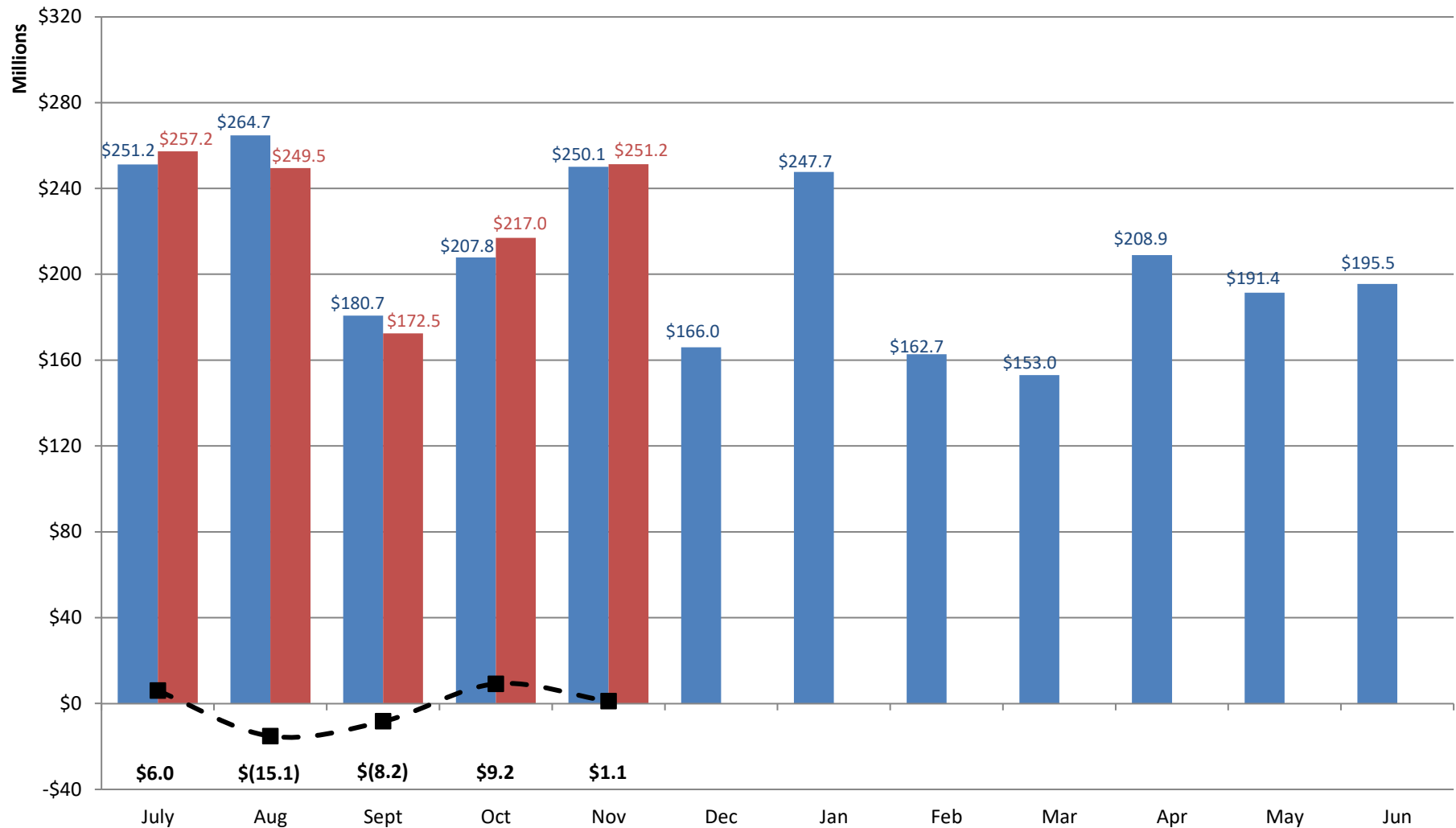
	<b>Leg. Adopted NOVEMBER YTD FY2026</b>	<b>Actual NOVEMBER YTD FY2026</b>	<b>DOLLAR CHANGE</b>	<b>YTD % Chg. Actual/Adopt Comparison</b>
<b>ONGOING RECEIPTS</b>				
Net Sales and Use Tax (excl. cost of admin)	662,993,888	663,519,398	525,510	0.1%
Lottery	74,981,401	75,093,725	112,324	0.1%
Net Contractor's Excise Tax	107,137,175	106,357,184	(779,991)	-0.7%
Insurance Company Tax	62,835,302	61,474,190	(1,361,112)	-2.2%
Unclaimed Property Receipts	61,384,827	61,384,827	0	0.0%
Licenses, Permits, and Fees	11,405,266	11,452,802	47,536	0.4%
Tobacco Taxes	19,675,224	19,233,251	(441,974)	-2.2%
Trust Funds	37,300,000	37,307,402	7,402	0.0%
Net Transfers In (excluding one-time)	13,742,471	13,712,400	(30,071)	-0.2%
Alcohol Beverage Tax	2,514,324	2,422,699	(91,624)	-3.6%
Bank Franchise Tax	3,510,004	5,121,730	1,611,726	45.9%
Charges for Goods and Services	5,178,983	4,738,421	(440,562)	-8.5%
Telecommunications Tax	711,319	1,042,998	331,679	46.6%
Severance Taxes	8,582,030	11,485,947	2,903,918	33.8%
Investment Income and Interest	81,276,930	71,791,448	(9,485,482)	-11.7%
Alcohol Beverage 2% Wholesale Tax	1,320,352	1,336,644	16,293	1.2%
<b>SUBTOTAL (ONGOING RECEIPTS)</b>	<b>\$ 1,154,549,495</b>	<b>1,147,475,068</b>	<b>\$ (7,074,427)</b>	<b>-0.6%</b>
<b>ONE-TIME RECEIPTS</b>				
Bank Franchise Tax Prior Year Revenue	-	25,923	25,923	N/A
<b>SUBTOTAL (ONE-TIME RECEIPTS)</b>	<b>\$ 0</b>	<b>\$ 25,923</b>	<b>\$ 25,923</b>	<b>N/A</b>
<b>GRAND TOTAL</b>	<b>\$ 1,154,549,495</b>	<b>\$ 1,147,500,990</b>	<b>\$ (7,048,505)</b>	<b>-0.6%</b>

# Legislative Adopted FY2026 vs. Actual FY2026 Receipts

■ Leg. Adopted FY2026 Receipts

■ Actual FY2026 Receipts

—■— Actual vs. Adopted



Through 5 months, total ongoing receipts are \$7.1 million LESS than the Legislative Adopted FY2026 estimate.

**Governor's Revised FY2026 Estimate (Nov. 2025) vs. Actual Revenues**  
**NOVEMBER FY2026 Comparison**

	<b>Gov. Revised NOVEMBER FY2026</b>	<b>Actual NOVEMBER FY2026</b>	<b>DOLLAR CHANGE</b>	<b>MTD % Chg. Actual/Revised Comparison</b>
<b>ONGOING RECEIPTS</b>				
Net Sales and Use Tax (excl. cost of admin)	124,789,908	125,733,654	943,746	0.8%
Lottery	14,095,884	14,601,796	505,912	3.6%
Net Contractor's Excise Tax	21,484,779	21,183,621	(301,157)	-1.4%
Insurance Company Tax	21,543,509	21,760,433	216,924	1.0%
Unclaimed Property Receipts	61,384,827	61,384,827	0	0.0%
Licenses, Permits, and Fees	949,367	464,978	(484,388)	-51.0%
Tobacco Taxes	3,100,157	3,185,829	85,672	2.8%
Trust Funds	-	-	0	N/A
Net Transfers In (excluding one-time)	1,108,942	1,132,344	23,402	2.1%
Alcohol Beverage Tax	11,074	4,684	(6,390)	-57.7%
Bank Franchise Tax	834,968	462,548	(372,420)	-44.6%
Charges for Goods and Services	1,043,745	794,285	(249,461)	-23.9%
Telecommunications Tax	248,783	263,497	14,715	5.9%
Severance Taxes	700,652	-	(700,652)	-100.0%
Investment Income and Interest	1,544	4,253	2,709	175.4%
Alcohol Beverage 2% Wholesale Tax	255,424	251,275	(4,149)	-1.6%
<b>TOTAL (ONGOING RECEIPTS)</b>	<b>\$ 251,553,561</b>	<b>\$ 251,228,024</b>	<b>\$ (325,537)</b>	<b>-0.1%</b>

**Governor's Revised FY2026 Estimate (Nov. 2025) vs. Actual Revenues**  
**Year-To-Date Through NOVEMBER FY2026 Comparison**

	<b>Gov. Revised NOVEMBER YTD FY2026</b>	<b>Actual NOVEMBER YTD FY2026</b>	<b>DOLLAR CHANGE</b>	<b>YTD % Chg. Actual/Revised Comparison</b>
<b>ONGOING RECEIPTS</b>				
Net Sales and Use Tax (excl. cost of admin)	662,575,652	663,519,398	943,746	0.1%
Lottery	74,587,813	75,093,725	505,912	0.7%
Net Contractor's Excise Tax	106,658,341	106,357,184	(301,157)	-0.3%
Insurance Company Tax	61,257,266	61,474,190	216,924	0.4%
Unclaimed Property Receipts	61,384,827	61,384,827	0	0.0%
Licenses, Permits, and Fees	11,937,191	11,452,802	(484,388)	-4.1%
Tobacco Taxes	19,147,578	19,233,251	85,672	0.4%
Trust Funds	37,307,402	37,307,402	0	0.0%
Net Transfers In (excluding one-time)	13,688,998	13,712,400	23,402	0.2%
Alcohol Beverage Tax	2,429,089	2,422,699	(6,390)	-0.3%
Bank Franchise Tax	5,494,150	5,121,730	(372,420)	-6.8%
Charges for Goods and Services	4,987,882	4,738,421	(249,461)	-5.0%
Telecommunications Tax	1,028,284	1,042,998	14,715	1.4%
Severance Taxes	12,186,600	11,485,947	(700,652)	-5.7%
Investment Income and Interest	71,788,739	71,791,448	2,709	0.0%
Alcohol Beverage 2% Wholesale Tax	1,340,793	1,336,644	(4,149)	-0.3%
<b>SUBTOTAL (ONGOING RECEIPTS)</b>	<b>\$ 1,147,800,604</b>	<b>\$ 1,147,475,068</b>	<b>\$ (325,537)</b>	<b>0.0%</b>
<b>ONE-TIME RECEIPTS</b>				
Bank Franchise Tax Prior Year Revenue	25,923	25,923	0	0.0%
<b>SUBTOTAL (ONE-TIME RECEIPTS)</b>	<b>\$ 25,923</b>	<b>\$ 25,923</b>	<b>\$ -</b>	<b>0.0%</b>
<b>GRAND TOTAL</b>	<b>\$ 1,147,826,527</b>	<b>\$ 1,147,500,990</b>	<b>\$ (325,537)</b>	<b>0.0%</b>