

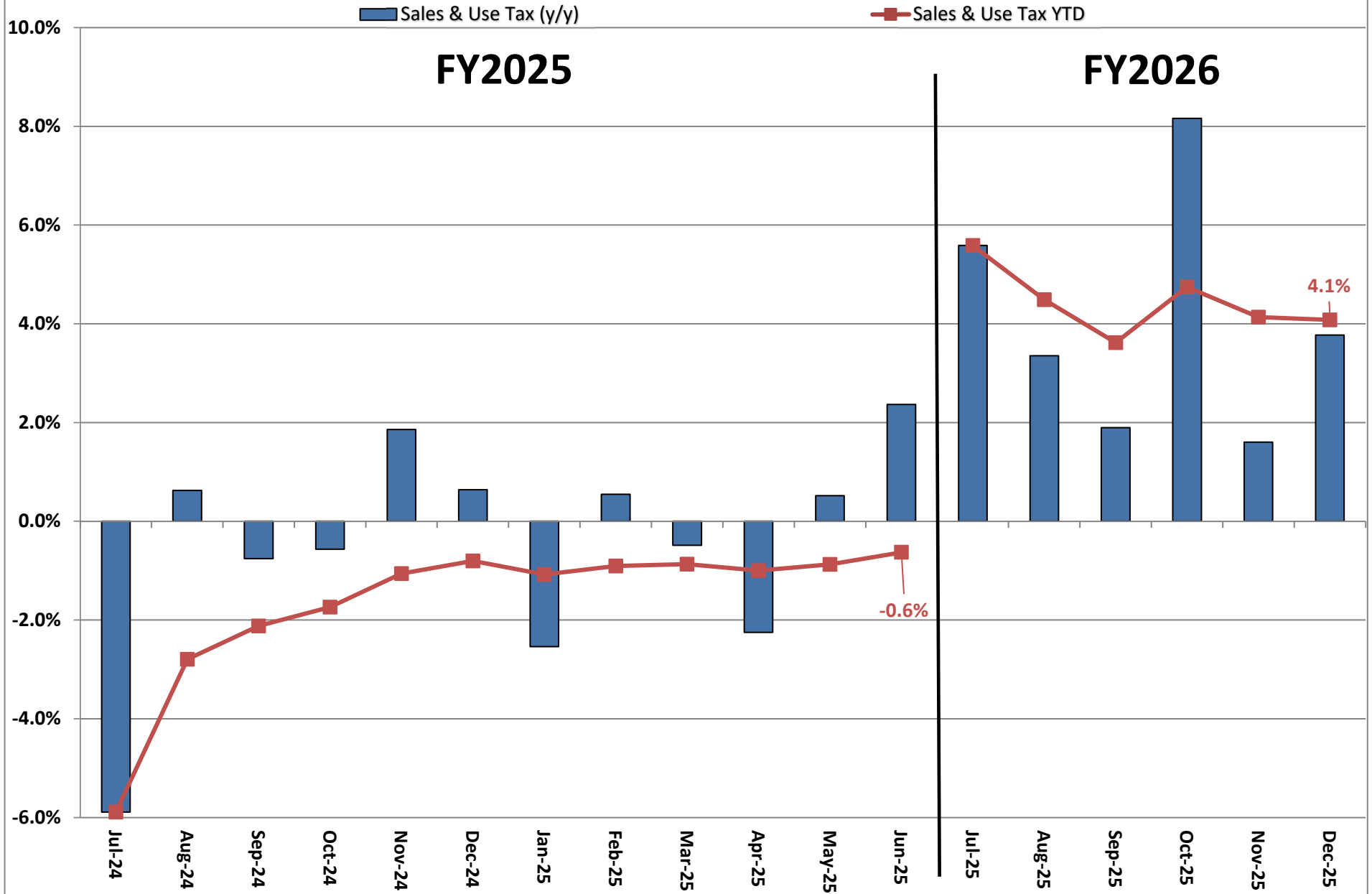
**Actual Revenue FY2025 vs. Actual Revenue FY2026  
DECEMBER FY2026 Comparison**

	<b>Actual DECEMBER FY2025</b>	<b>Actual DECEMBER FY2026</b>	<b>DOLLAR CHANGE</b>	<b>PERCENT CHANGE</b>
<b>ONGOING RECEIPTS</b>				
Net Sales and Use Tax (excl. cost of admin)	114,940,919	119,276,287	4,335,368	3.8%
Lottery	13,261,424	13,128,551	(132,873)	-1.0%
Net Contractor's Excise Tax	18,394,437	18,052,196	(342,241)	-1.9%
Insurance Company Tax	1,076,629	2,056,660	980,031	91.0%
Unclaimed Property Receipts	(2,660,748)	-	2,660,748	-100.0%
Licenses, Permits, and Fees	9,807,641	3,944,845	(5,862,796)	-59.8%
Tobacco Taxes	3,390,059	3,816,209	426,149	12.6%
Trust Funds	-	-	0	N/A
Net Transfers In (excluding one-time)	917,869	385,880	(531,989)	-58.0%
Alcohol Beverage Tax	11,391	4,727	(6,664)	-58.5%
Bank Franchise Tax	5,799,982	4,400,672	(1,399,310)	-24.1%
Charges for Goods and Services	745,107	1,058,946	313,839	42.1%
Telecommunications Tax	175,056	255,254	80,198	45.8%
Severance Taxes	1,919	877	(1,042)	-54.3%
Investment Income and Interest	2,349	3,697	1,348	57.4%
Alcohol Beverage 2% Wholesale Tax	295,560	327,693	32,133	10.9%
<b>SUBTOTAL (ONGOING RECEIPTS)</b>	<b>\$ 166,159,596</b>	<b>\$ 166,712,495</b>	<b>\$ 552,899</b>	<b>0.3%</b>
<b>ONE-TIME RECEIPTS</b>				
Bank Franchise Tax Prior Year Revenue	600,355	-	(600,355)	-100.0%
<b>SUBTOTAL (ONE-TIME RECEIPTS)</b>	<b>\$ 600,355</b>	<b>\$ 0</b>	<b>\$ (600,355)</b>	<b>-100.0%</b>
<b>GRAND TOTAL</b>	<b>\$ 166,759,951</b>	<b>\$ 166,712,495</b>	<b>\$ (47,456)</b>	<b>0.0%</b>

**Actual Revenue FY2025 vs. Actual Revenue FY2026**  
**Year-To-Date Through DECEMBER FY2026 Comparison**

	Actual DECEMBER YTD FY2025	Actual DECEMBER YTD FY2026	DOLLAR CHANGE	YTD GROWTH OVER FY2025
<b>ONGOING RECEIPTS</b>				
Net Sales and Use Tax (excl. cost of admin)	752,111,115	782,795,684	30,684,569	4.1%
Lottery	87,409,963	88,222,276	812,313	0.9%
Net Contractor's Excise Tax	120,985,635	124,409,380	3,423,745	2.8%
Insurance Company Tax	57,433,815	63,530,850	6,097,035	10.6%
Unclaimed Property Receipts	102,131,744	61,384,827	(40,746,917)	-39.9%
Licenses, Permits, and Fees	11,853,865	15,397,647	3,543,782	29.9%
Tobacco Taxes	23,735,635	23,049,459	(686,176)	-2.9%
Trust Funds	35,309,002	37,307,402	1,998,400	5.7%
Net Transfers In (excluding one-time)	14,153,751	14,098,281	(55,471)	-0.4%
Alcohol Beverage Tax	2,474,908	2,427,427	(47,482)	-1.9%
Bank Franchise Tax	9,805,224	9,522,403	(282,821)	-2.9%
Charges for Goods and Services	5,782,821	5,797,367	14,546	0.3%
Telecommunications Tax	907,117	1,298,252	391,135	43.1%
Severance Taxes	8,196,546	11,486,825	3,290,278	40.1%
Investment Income and Interest	95,894,981	71,795,145	(24,099,836)	-25.1%
Alcohol Beverage 2% Wholesale Tax	1,595,672	1,664,337	68,665	4.3%
<b>SUBTOTAL (ONGOING RECEIPTS)</b>	<b>\$ 1,329,781,794</b>	<b>\$ 1,314,187,562</b>	<b>\$ (15,594,231)</b>	<b>-1.2%</b>
<b>ONE-TIME RECEIPTS</b>				
Bank Franchise Tax Prior Year Revenue	817,339	25,923	(791,416)	-96.8%
One-Time Unclaimed Property	176,321,347	-	(176,321,347)	-100.0%
<b>SUBTOTAL (ONE-TIME RECEIPTS)</b>	<b>\$ 177,138,686</b>	<b>\$ 25,923</b>	<b>\$ (177,112,763)</b>	<b>-100.0%</b>
<b>GRAND TOTAL</b>	<b>\$ 1,506,920,480</b>	<b>\$ 1,314,213,485</b>	<b>\$ (192,706,995)</b>	<b>-12.8%</b>

# Ongoing State Sales and Use Tax (Excludes one-time receipts)



**Legislative Adopted FY2026 Estimate (Feb. 2025) vs. Actual Revenues**  
**DECEMBER FY2026 Comparison**

	<b>Leg. Adopted DECEMBER FY2026</b>	<b>Actual DECEMBER FY2026</b>	<b>DOLLAR CHANGE</b>	<b>PERCENT CHANGE</b>
<b>ONGOING RECEIPTS</b>				
Net Sales and Use Tax (excl. cost of admin)	120,220,566	119,276,287	(944,280)	-0.8%
Lottery	13,851,145	13,128,551	(722,594)	-5.2%
Net Contractor's Excise Tax	18,865,834	18,052,196	(813,637)	-4.3%
Insurance Company Tax	2,220,098	2,056,660	(163,439)	-7.4%
Unclaimed Property Receipts	-	-	0	N/A
Licenses, Permits, and Fees	3,105,191	3,944,845	839,653	27.0%
Tobacco Taxes	3,518,059	3,816,209	298,149	8.5%
Trust Funds	-	-	0	N/A
Net Transfers In (excluding one-time)	963,714	385,880	(577,834)	-60.0%
Alcohol Beverage Tax	7,979	4,727	(3,251)	-40.8%
Bank Franchise Tax	1,852,921	4,400,672	2,547,751	137.5%
Charges for Goods and Services	898,852	1,058,946	160,094	17.8%
Telecommunications Tax	169,006	255,254	86,248	51.0%
Severance Taxes	2,560	877	(1,683)	-65.7%
Investment Income and Interest	2,729	3,697	968	35.5%
Alcohol Beverage 2% Wholesale Tax	336,064	327,693	(8,372)	-2.5%
<b>TOTAL (ONGOING RECEIPTS)</b>	<b>\$ 166,014,721</b>	<b>\$ 166,712,495</b>	<b>\$ 697,774</b>	<b>0.4%</b>

**Legislative Adopted FY2026 Estimate (Feb. 2025) vs. Actual Revenues**  
**Year-to-Date Through DECEMBER FY2026 Comparison**

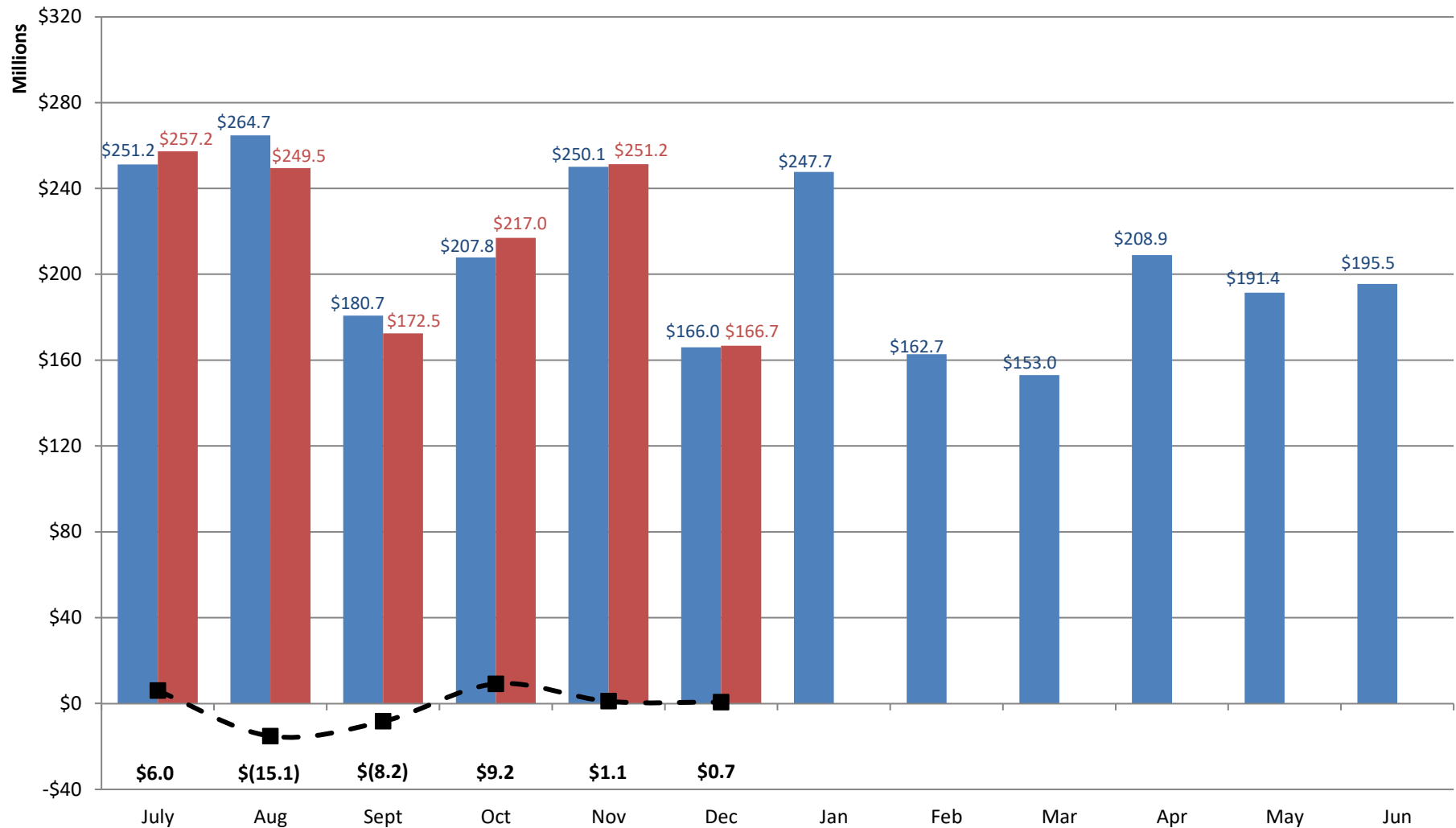
	<b>Leg. Adopted DECEMBER YTD FY2026</b>	<b>Actual DECEMBER YTD FY2026</b>	<b>DOLLAR CHANGE</b>	<b>YTD % Chg. Actual/Adopt Comparison</b>
<b>ONGOING RECEIPTS</b>				
Net Sales and Use Tax (excl. cost of admin)	783,214,454	782,795,684	(418,769)	-0.1%
Lottery	88,832,546	88,222,276	(610,270)	-0.7%
Net Contractor's Excise Tax	126,003,009	124,409,380	(1,593,629)	-1.3%
Insurance Company Tax	65,055,401	63,530,850	(1,524,550)	-2.3%
Unclaimed Property Receipts	61,384,827	61,384,827	0	0.0%
Licenses, Permits, and Fees	14,510,458	15,397,647	887,190	6.1%
Tobacco Taxes	23,193,284	23,049,459	(143,824)	-0.6%
Trust Funds	37,300,000	37,307,402	7,402	0.0%
Net Transfers In (excluding one-time)	14,706,186	14,098,281	(607,905)	-4.1%
Alcohol Beverage Tax	2,522,302	2,427,427	(94,876)	-3.8%
Bank Franchise Tax	5,362,925	9,522,403	4,159,478	77.6%
Charges for Goods and Services	6,077,835	5,797,367	(280,468)	-4.6%
Telecommunications Tax	880,325	1,298,252	417,927	47.5%
Severance Taxes	8,584,590	11,486,825	2,902,235	33.8%
Investment Income and Interest	81,279,659	71,795,145	(9,484,514)	-11.7%
Alcohol Beverage 2% Wholesale Tax	1,656,416	1,664,337	7,921	0.5%
<b>SUBTOTAL (ONGOING RECEIPTS)</b>	<b>\$ 1,320,564,215</b>	<b>1,314,187,562</b>	<b>\$ (6,376,653)</b>	<b>-0.5%</b>
<b>ONE-TIME RECEIPTS</b>				
Bank Franchise Tax Prior Year Revenue	-	25,923	25,923	N/A
<b>SUBTOTAL (ONE-TIME RECEIPTS)</b>	<b>\$ 0</b>	<b>\$ 25,923</b>	<b>\$ 25,923</b>	<b>N/A</b>
<b>GRAND TOTAL</b>	<b>\$ 1,320,564,215</b>	<b>\$ 1,314,213,485</b>	<b>\$ (6,350,730)</b>	<b>-0.5%</b>

# Legislative Adopted FY2026 vs. Actual FY2026 Receipts

■ Leg. Adopted FY2026 Receipts

■ Actual FY2026 Receipts

—■— Actual vs. Adopted



Through 6 months, total ongoing receipts are \$6.4 million LESS than the Legislative Adopted FY2026 estimate.

**Governor's Revised FY2026 Estimate (Nov. 2025) vs. Actual Revenues  
DECEMBER FY2026 Comparison**

	<b>Gov. Revised DECEMBER FY2026</b>	<b>Actual DECEMBER FY2026</b>	<b>DOLLAR CHANGE</b>	<b>MTD % Chg. Actual/Revised Comparison</b>
<b>ONGOING RECEIPTS</b>				
Net Sales and Use Tax (excl. cost of admin)	119,570,238	119,276,287	(293,952)	-0.2%
Lottery	13,506,381	13,128,551	(377,830)	-2.8%
Net Contractor's Excise Tax	18,940,075	18,052,196	(887,878)	-4.7%
Insurance Company Tax	1,189,092	2,056,660	867,567	73.0%
Unclaimed Property Receipts	-	-	0	N/A
Licenses, Permits, and Fees	3,104,141	3,944,845	840,704	27.1%
Tobacco Taxes	3,333,166	3,816,209	483,043	14.5%
Trust Funds	-	-	0	N/A
Net Transfers In (excluding one-time)	987,194	385,880	(601,314)	-60.9%
Alcohol Beverage Tax	7,891	4,727	(3,164)	-40.1%
Bank Franchise Tax	2,067,822	4,400,672	2,332,850	112.8%
Charges for Goods and Services	920,801	1,058,946	138,145	15.0%
Telecommunications Tax	233,022	255,254	22,232	9.5%
Severance Taxes	2,903	877	(2,025)	-69.8%
Investment Income and Interest	2,307	3,697	1,390	60.3%
Alcohol Beverage 2% Wholesale Tax	317,271	327,693	10,422	3.3%
<b>TOTAL (ONGOING RECEIPTS)</b>	<b>\$ 164,182,305</b>	<b>\$ 166,712,495</b>	<b>\$ 2,530,190</b>	<b>1.5%</b>

**Governor's Revised FY2026 Estimate (Nov. 2025) vs. Actual Revenues**  
**Year-To-Date Through DECEMBER FY2026 Comparison**

	<b>Gov. Revised DECEMBER YTD FY2026</b>	<b>Actual DECEMBER YTD FY2026</b>	<b>DOLLAR CHANGE</b>	<b>YTD % Chg. Actual/Revised Comparison</b>
<b>ONGOING RECEIPTS</b>				
Net Sales and Use Tax (excl. cost of admin)	782,145,890	782,795,684	649,795	0.1%
Lottery	88,094,194	88,222,276	128,082	0.1%
Net Contractor's Excise Tax	125,598,416	124,409,380	(1,189,036)	-0.9%
Insurance Company Tax	62,446,359	63,530,850	1,084,492	1.7%
Unclaimed Property Receipts	61,384,827	61,384,827	0	0.0%
Licenses, Permits, and Fees	15,041,331	15,397,647	356,316	2.4%
Tobacco Taxes	22,480,744	23,049,459	568,715	2.5%
Trust Funds	37,307,402	37,307,402	0	0.0%
Net Transfers In (excluding one-time)	14,676,192	14,098,281	(577,912)	-3.9%
Alcohol Beverage Tax	2,436,981	2,427,427	(9,554)	-0.4%
Bank Franchise Tax	7,561,973	9,522,403	1,960,430	25.9%
Charges for Goods and Services	5,908,683	5,797,367	(111,315)	-1.9%
Telecommunications Tax	1,261,306	1,298,252	36,947	2.9%
Severance Taxes	12,189,502	11,486,825	(702,677)	-5.8%
Investment Income and Interest	71,791,046	71,795,145	4,099	0.0%
Alcohol Beverage 2% Wholesale Tax	1,658,064	1,664,337	6,273	0.4%
<b>SUBTOTAL (ONGOING RECEIPTS)</b>	<b>\$ 1,311,982,909</b>	<b>\$ 1,314,187,562</b>	<b>\$ 2,204,653</b>	<b>0.2%</b>
<b>ONE-TIME RECEIPTS</b>				
Bank Franchise Tax Prior Year Revenue	25,923	25,923	0	0.0%
<b>SUBTOTAL (ONE-TIME RECEIPTS)</b>	<b>\$ 25,923</b>	<b>\$ 25,923</b>	<b>\$ -</b>	<b>0.0%</b>
<b>GRAND TOTAL</b>	<b>\$ 1,312,008,832</b>	<b>\$ 1,314,213,485</b>	<b>\$ 2,204,653</b>	<b>0.2%</b>