

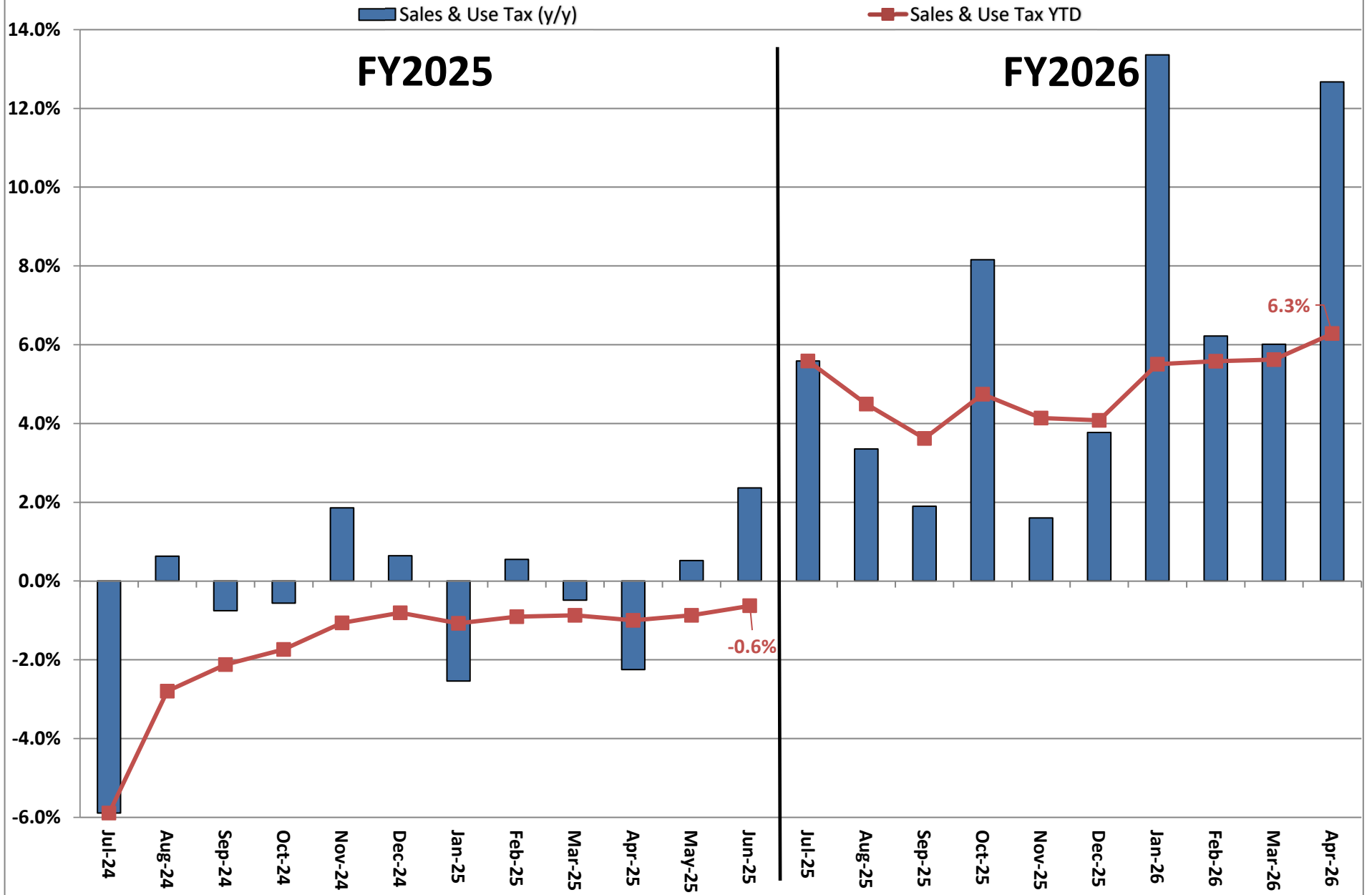
**Actual Revenue FY2025 vs. Actual Revenue FY2026
APRIL FY2026 Comparison**

	Actual APRIL FY2025	Actual APRIL FY2026	DOLLAR CHANGE	PERCENT CHANGE
ONGOING RECEIPTS				
Net Sales and Use Tax (excl. cost of admin)	113,738,934	128,151,618	14,412,684	12.7%
Lottery	14,504,250	15,201,713	697,463	4.8%
Net Contractor's Excise Tax	14,279,116	15,646,325	1,367,210	9.6%
Insurance Company Tax	30,475,527	14,256,194	(16,219,333)	-53.2%
Unclaimed Property Receipts	(7,405,501)	685,790	8,091,291	N/A
Licenses, Permits, and Fees	9,249,464	27,912,153	18,662,689	201.8%
Tobacco Taxes	2,389,457	3,960,277	1,570,820	65.7%
Trust Funds	-	-	0	N/A
Net Transfers In (excluding one-time)	2,772,194	7,913,704	5,141,510	185.5%
Alcohol Beverage Tax	1,958,669	1,733,823	(224,846)	-11.5%
Bank Franchise Tax	11,758,125	12,480,452	722,326	6.1%
Charges for Goods and Services	1,118,604	1,671,931	553,327	49.5%
Telecommunications Tax	167,370	241,533	74,163	44.3%
Severance Taxes	3,216,838	1,827,874	(1,388,963)	-43.2%
Investment Income and Interest	29,131	99,946	70,814	243.1%
Alcohol Beverage 2% Wholesale Tax	207,335	217,868	10,533	5.1%
SUBTOTAL (ONGOING RECEIPTS)	\$ 198,459,512	\$ 232,001,202	\$ 33,541,690	16.9%
ONE-TIME RECEIPTS				
One-Time Sales and Use Tax	-	4,135,875	4,135,875	N/A
One-Time Unclaimed Property	29,631,431	-	(29,631,431)	-100.0%
SUBTOTAL (ONE-TIME RECEIPTS)	\$ 29,631,431	\$ 4,135,875	\$ (29,631,431)	-86.0%
GRAND TOTAL	\$ 228,090,943	\$ 236,137,077	\$ 8,046,134	3.5%

**Actual Revenue FY2025 vs. Actual Revenue FY2026
Year-To-Date Through APRIL FY2026 Comparison**

	Actual APRIL YTD FY2025	Actual APRIL YTD FY2026	DOLLAR CHANGE	YTD GROWTH OVER FY2025
ONGOING RECEIPTS				
Net Sales and Use Tax (excl. cost of admin)	1,207,762,984	1,283,663,368	75,900,384	6.3%
Lottery	143,341,806	146,621,364	3,279,558	2.3%
Net Contractor's Excise Tax	182,752,171	187,697,916	4,945,746	2.7%
Insurance Company Tax	135,226,959	123,097,077	(12,129,882)	-9.0%
Unclaimed Property Receipts	78,091,748	62,070,617	(16,021,131)	-20.5%
Licenses, Permits, and Fees	48,890,468	54,099,962	5,209,495	10.7%
Tobacco Taxes	32,343,985	35,111,767	2,767,782	8.6%
Trust Funds	35,309,002	37,307,402	1,998,400	5.7%
Net Transfers In (excluding one-time)	20,397,395	24,675,439	4,278,045	21.0%
Alcohol Beverage Tax	6,675,223	6,548,961	(126,262)	-1.9%
Bank Franchise Tax	28,248,924	32,951,940	4,703,016	16.6%
Charges for Goods and Services	10,151,086	9,946,167	(204,919)	-2.0%
Telecommunications Tax	1,615,643	2,289,628	673,985	41.7%
Severance Taxes	14,714,801	20,707,299	5,992,498	40.7%
Investment Income and Interest	95,933,897	71,910,116	(24,023,782)	-25.0%
Alcohol Beverage 2% Wholesale Tax	2,538,971	2,530,349	(8,622)	-0.3%
SUBTOTAL (ONGOING RECEIPTS)	\$ 2,043,995,063	\$ 2,101,229,374	\$ 57,234,311	2.8%
ONE-TIME RECEIPTS				
One-Time Sales and Use Tax	-	4,135,875	4,135,875	N/A
Bank Franchise Tax Prior Year Revenue	1,414,044	1,761,519	347,475	24.6%
One-Time Unclaimed Property	215,014,788	-	(215,014,788)	-100.0%
SUBTOTAL (ONE-TIME RECEIPTS)	\$ 216,428,832	\$ 5,897,394	\$ (210,531,439)	-97.3%
GRAND TOTAL	\$ 2,260,423,895	\$ 2,107,126,767	\$ (153,297,128)	-6.8%

Ongoing State Sales and Use Tax (Excludes one-time receipts)



**Legislative Revised FY2026 Estimate (Feb. 2026) vs. Actual Revenues
APRIL FY2026 Comparison**

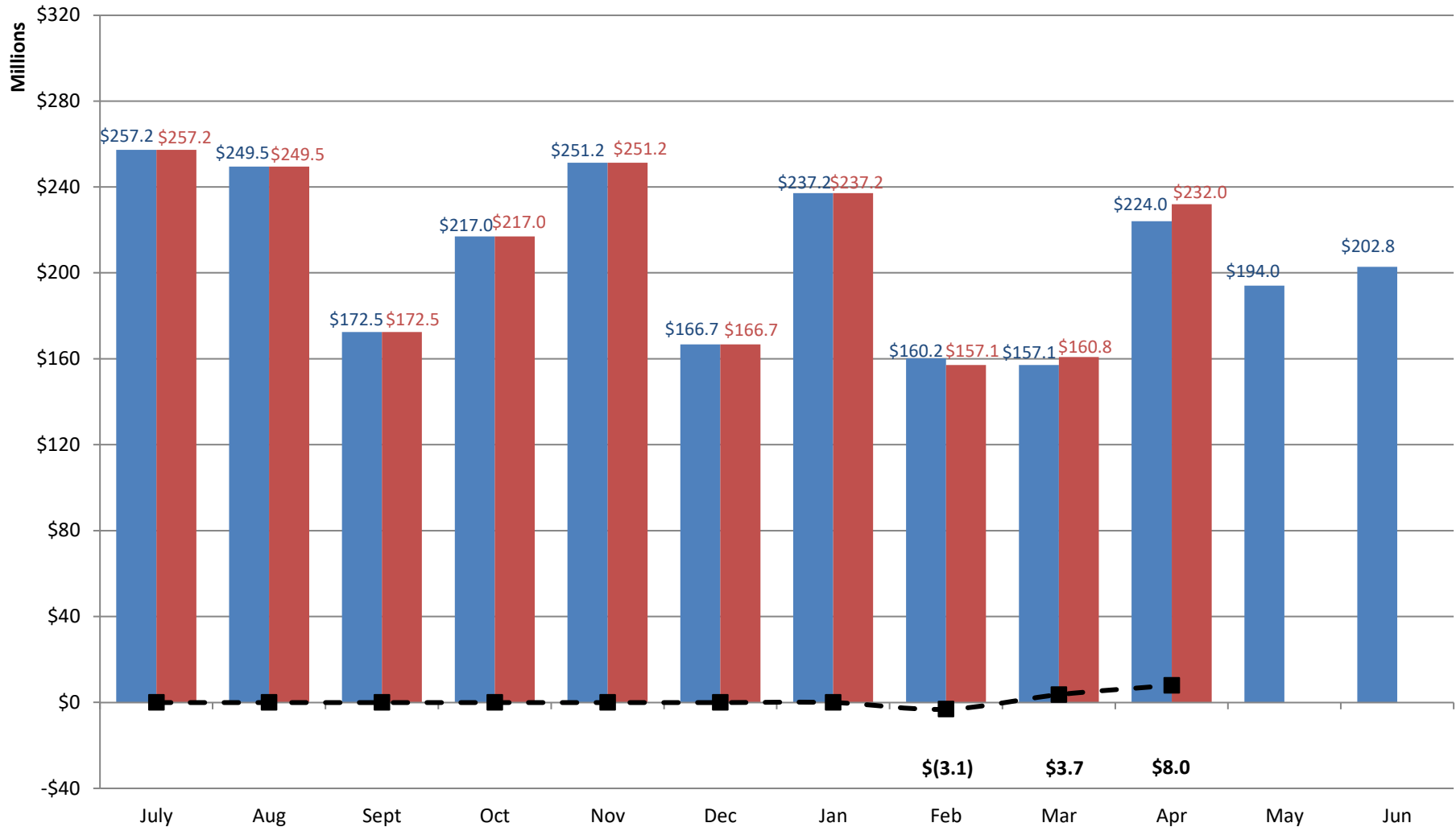
	Leg. Revised APRIL FY2026	Actual APRIL FY2026	DOLLAR CHANGE	PERCENT CHANGE
ONGOING RECEIPTS				
Net Sales and Use Tax (excl. cost of admin)	121,481,105	128,151,618	6,670,513	5.5%
Lottery	15,117,114	15,201,713	84,599	0.6%
Net Contractor's Excise Tax	14,551,786	15,646,325	1,094,540	7.5%
Insurance Company Tax	27,930,005	14,256,194	(13,673,811)	-49.0%
Unclaimed Property Receipts	-	685,790	0	N/A
Licenses, Permits, and Fees	18,703,443	27,912,153	9,208,710	49.2%
Tobacco Taxes	3,570,212	3,960,277	390,065	10.9%
Trust Funds	-	-	0	N/A
Net Transfers In (excluding one-time)	4,305,317	7,913,704	3,608,387	83.8%
Alcohol Beverage Tax	1,955,107	1,733,823	(221,284)	-11.3%
Bank Franchise Tax	10,492,309	12,480,452	1,988,143	18.9%
Charges for Goods and Services	1,088,219	1,671,931	583,712	53.6%
Telecommunications Tax	226,229	241,533	15,304	6.8%
Severance Taxes	4,373,785	1,827,874	(2,545,910)	-58.2%
Investment Income and Interest	26,281	99,946	73,665	280.3%
Alcohol Beverage 2% Wholesale Tax	201,367	217,868	16,500	8.2%
TOTAL (ONGOING RECEIPTS)	\$ 224,022,280	\$ 232,001,202	\$ 7,978,922	3.6%
ONE-TIME RECEIPTS				
One-Time Sales and Use Tax	-	4,135,875	4,135,875	N/A
SUBTOTAL (ONE-TIME RECEIPTS)	\$ 0	\$ 4,135,875	\$ 4,135,875	N/A
GRAND TOTAL	\$ 224,022,280	\$ 236,137,077	\$ 12,114,797	5.4%

**Legislative Revised FY2026 Estimate (Feb. 2026) vs. Actual Revenues
Year-to-Date Through APRIL FY2026 Comparison**

	Leg. Adopted APRIL YTD FY2026	Actual APRIL YTD FY2026	DOLLAR CHANGE	YTD % Chg. Actual/Adopt Comparison
ONGOING RECEIPTS				
Net Sales and Use Tax (excl. cost of admin)	1,274,914,649	1,283,663,368	8,748,719	0.7%
Lottery	146,157,689	146,621,364	463,675	0.3%
Net Contractor's Excise Tax	187,607,670	187,697,916	90,247	0.0%
Insurance Company Tax	136,789,541	123,097,077	(13,692,464)	-10.0%
Unclaimed Property Receipts	61,384,827	62,070,617	685,790	1.1%
Licenses, Permits, and Fees	47,678,651	54,099,962	6,421,311	13.5%
Tobacco Taxes	34,645,699	35,111,767	466,069	1.3%
Trust Funds	37,307,402	37,307,402	0	0.0%
Net Transfers In (excluding one-time)	21,241,105	24,675,439	3,434,335	16.2%
Alcohol Beverage Tax	6,774,745	6,548,961	(225,784)	-3.3%
Bank Franchise Tax	28,059,302	32,951,940	4,892,638	17.4%
Charges for Goods and Services	10,077,545	9,946,167	(131,377)	-1.3%
Telecommunications Tax	2,305,371	2,289,628	(15,743)	-0.7%
Severance Taxes	23,274,728	20,707,299	(2,567,429)	-11.0%
Investment Income and Interest	71,830,357	71,910,116	79,759	0.1%
Alcohol Beverage 2% Wholesale Tax	2,614,059	2,530,349	(83,709)	-3.2%
SUBTOTAL (ONGOING RECEIPTS)	\$ 2,092,663,338	\$ 2,101,229,374	\$ 8,566,036	0.4%
ONE-TIME RECEIPTS				
One-Time Sales and Use Tax	-	4,135,875	4,135,875	N/A
Bank Franchise Tax Prior Year Revenue	155,380	1,761,519	1,606,139	1033.7%
SUBTOTAL (ONE-TIME RECEIPTS)	\$ 155,380	\$ 5,897,394	\$ 5,742,014	3695.5%
GRAND TOTAL	\$ 2,092,818,718	\$ 2,107,126,767	\$ 14,308,050	0.7%

Legislative Revised FY2026 vs. Actual FY2026 Receipts

■ Leg. Revised FY2026 Receipts
 ■ Actual FY2026 Receipts
 ■ Actual vs. Adopted



Through 10 months, total ongoing receipts are \$8.6 million MORE than the Legislative Revised FY2026 estimate.