

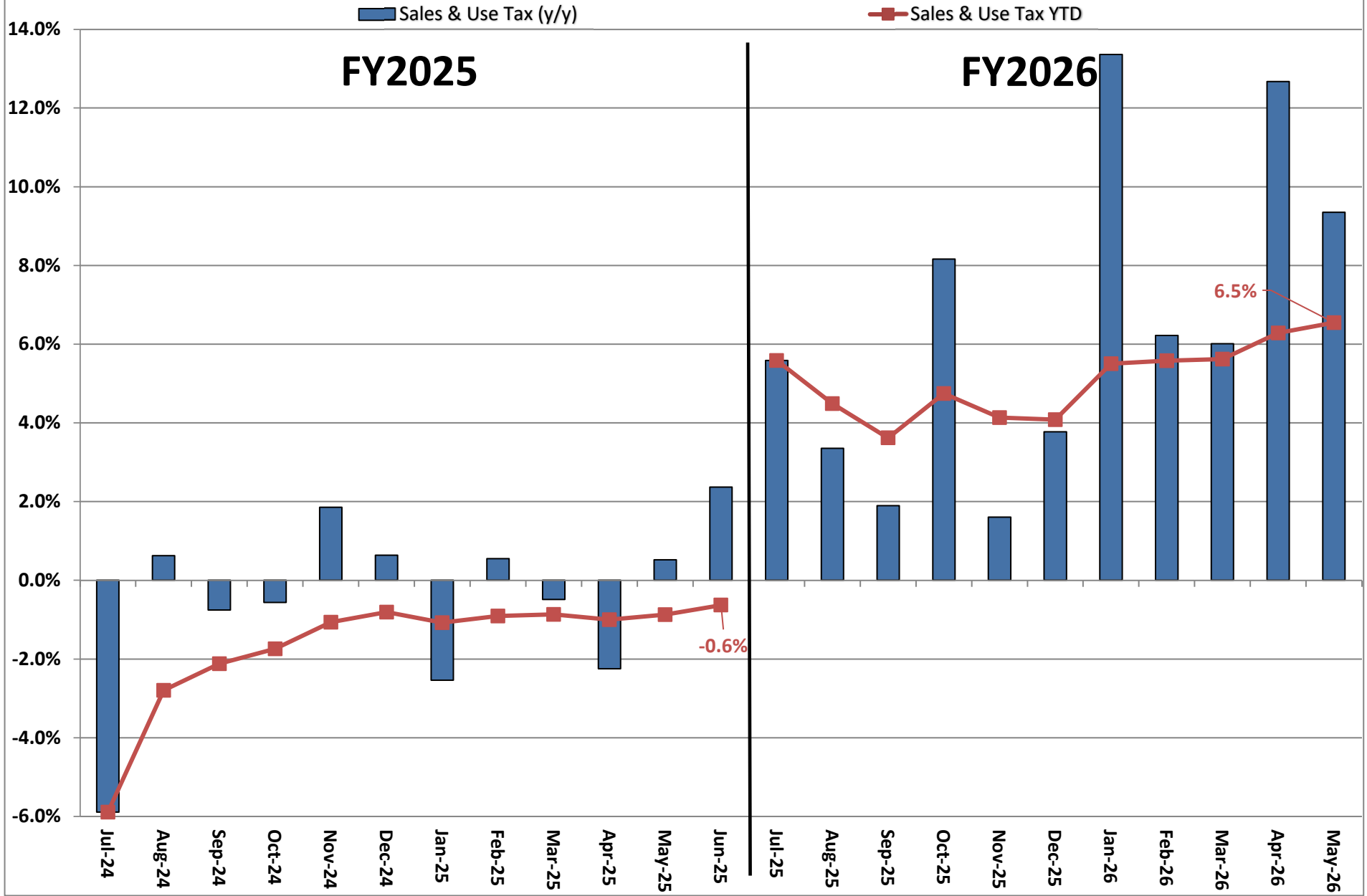
**Actual Revenue FY2025 vs. Actual Revenue FY2026  
MAY FY2026 Comparison**

	<b>Actual MAY FY2025</b>	<b>Actual MAY FY2026</b>	<b>DOLLAR CHANGE</b>	<b>PERCENT CHANGE</b>
<b>ONGOING RECEIPTS</b>				
Net Sales and Use Tax (excl. cost of admin)	114,067,129	124,730,602	10,663,473	9.3%
Lottery	13,739,252	14,801,796	1,062,544	7.7%
Net Contractor's Excise Tax	13,916,659	13,987,739	71,079	0.5%
Insurance Company Tax	7,414,985	19,789,908	12,374,924	166.9%
Unclaimed Property Receipts	(9,045,019)	(685,790)	8,359,229	N/A
Licenses, Permits, and Fees	10,259,510	3,430,081	(6,829,429)	-66.6%
Tobacco Taxes	4,184,325	3,530,251	(654,074)	-15.6%
Trust Funds	15,057,005	15,079,721	22,716	0.2%
Net Transfers In (excluding one-time)	5,752,317	671,874	(5,080,443)	-88.3%
Alcohol Beverage Tax	4,956	3,342	(1,613)	-32.6%
Bank Franchise Tax	(2,460,672)	1,720,326	4,180,998	-169.9%
Charges for Goods and Services	625,754	1,429,011	803,257	128.4%
Telecommunications Tax	197,285	256,072	58,788	29.8%
Severance Taxes	2,862	1,950	(912)	-31.9%
Investment Income and Interest	1,257	17,517	16,260	1293.5%
Alcohol Beverage 2% Wholesale Tax	232,380	238,817	6,437	2.8%
<b>SUBTOTAL (ONGOING RECEIPTS)</b>	<b>\$ 173,949,985</b>	<b>\$ 199,003,218</b>	<b>\$ 25,053,233</b>	<b>14.4%</b>
<b>ONE-TIME RECEIPTS</b>				
One-Time Unclaimed Property	9,045,019	-	(9,045,019)	-100.0%
<b>SUBTOTAL (ONE-TIME RECEIPTS)</b>	<b>\$ 9,045,019</b>	<b>\$ 0</b>	<b>\$ (9,045,019)</b>	<b>-100.0%</b>
<b>GRAND TOTAL</b>	<b>\$ 182,995,004</b>	<b>\$ 199,003,218</b>	<b>\$ 16,008,214</b>	<b>8.7%</b>

**Actual Revenue FY2025 vs. Actual Revenue FY2026  
Year-To-Date Through MAY FY2026 Comparison**

	<b>Actual MAY YTD FY2025</b>	<b>Actual MAY YTD FY2026</b>	<b>DOLLAR CHANGE</b>	<b>YTD GROWTH OVER FY2025</b>
<b>ONGOING RECEIPTS</b>				
Net Sales and Use Tax (excl. cost of admin)	1,321,830,113	1,408,393,970	86,563,857	6.5%
Lottery	157,081,059	161,423,160	4,342,101	2.8%
Net Contractor's Excise Tax	196,668,830	201,685,655	5,016,825	2.6%
Insurance Company Tax	142,641,943	142,886,985	245,042	0.2%
Unclaimed Property Receipts	69,046,729	61,384,827	(7,661,902)	-11.1%
Licenses, Permits, and Fees	59,149,978	57,530,044	(1,619,934)	-2.7%
Tobacco Taxes	36,528,311	38,642,018	2,113,708	5.8%
Trust Funds	50,366,006	52,387,122	2,021,116	4.0%
Net Transfers In (excluding one-time)	26,149,712	25,347,314	(802,398)	-3.1%
Alcohol Beverage Tax	6,680,179	6,552,304	(127,876)	-1.9%
Bank Franchise Tax	25,788,252	34,672,266	8,884,014	34.4%
Charges for Goods and Services	10,776,839	11,375,178	598,338	5.6%
Telecommunications Tax	1,812,928	2,545,701	732,773	40.4%
Severance Taxes	14,717,662	20,709,249	5,991,586	40.7%
Investment Income and Interest	95,935,154	71,927,632	(24,007,522)	-25.0%
Alcohol Beverage 2% Wholesale Tax	2,771,351	2,769,166	(2,185)	-0.1%
<b>SUBTOTAL (ONGOING RECEIPTS)</b>	<b>\$ 2,217,945,047</b>	<b>\$ 2,300,232,591</b>	<b>\$ 82,287,544</b>	<b>3.7%</b>
<b>ONE-TIME RECEIPTS</b>				
One-Time Sales and Use Tax	-	4,135,875	4,135,875	N/A
Bank Franchise Tax Prior Year Revenue	1,414,044	1,761,519	347,475	24.6%
One-Time Unclaimed Property	224,059,807	-	(224,059,807)	-100.0%
<b>SUBTOTAL (ONE-TIME RECEIPTS)</b>	<b>\$ 225,473,851</b>	<b>\$ 5,897,394</b>	<b>\$ (219,576,457)</b>	<b>-97.4%</b>
<b>GRAND TOTAL</b>	<b>\$ 2,443,418,898</b>	<b>\$ 2,306,129,985</b>	<b>\$ (137,288,913)</b>	<b>-5.6%</b>

## Ongoing State Sales and Use Tax (Excludes one-time receipts)



**Legislative Revised FY2026 Estimate (Feb. 2026) vs. Actual Revenues  
MAY FY2026 Comparison**

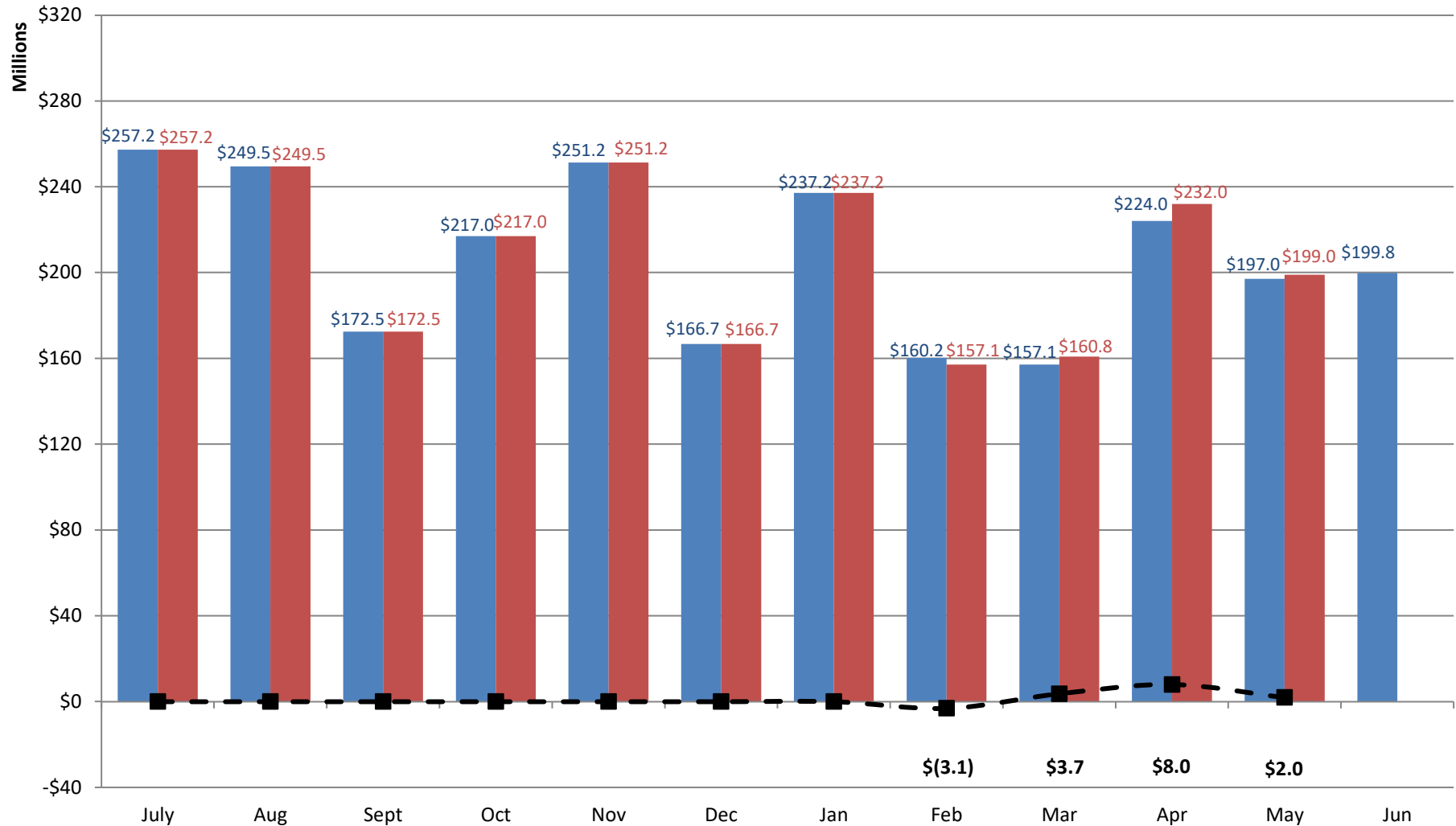
	<b>Leg. Revised MAY FY2026</b>	<b>Actual MAY FY2026</b>	<b>DOLLAR CHANGE</b>	<b>PERCENT CHANGE</b>
<b>ONGOING RECEIPTS</b>				
Net Sales and Use Tax (excl. cost of admin)	118,681,629	124,730,602	6,048,972	5.1%
Lottery	14,266,393	14,801,796	535,403	3.8%
Net Contractor's Excise Tax	13,975,368	13,987,739	12,371	0.1%
Insurance Company Tax	18,213,456	19,789,908	1,576,452	8.7%
Unclaimed Property Receipts	0	(685,790)	0	N/A
Licenses, Permits, and Fees	6,541,073	3,430,081	(3,110,992)	-47.6%
Tobacco Taxes	3,684,940	3,530,251	(154,689)	-4.2%
Trust Funds	15,080,000	15,079,721	(280)	0.0%
Net Transfers In (excluding one-time)	3,635,620	671,874	(2,963,746)	-81.5%
Alcohol Beverage Tax	108,423	3,342	(105,080)	-96.9%
Bank Franchise Tax	450,402	1,720,326	1,269,924	282.0%
Charges for Goods and Services	1,183,748	1,429,011	245,262	20.7%
Telecommunications Tax	242,451	256,072	13,622	5.6%
Severance Taxes	712,340	1,950	(710,390)	-99.7%
Investment Income and Interest	1,780	17,517	15,736	883.9%
Alcohol Beverage 2% Wholesale Tax	266,719	238,817	(27,902)	-10.5%
<b>TOTAL (ONGOING RECEIPTS)</b>	<b>\$ 197,044,343</b>	<b>\$ 199,003,218</b>	<b>\$ 1,958,875</b>	<b>1.0%</b>
<b>GRAND TOTAL</b>	<b>\$ 197,044,343</b>	<b>\$ 199,003,218</b>	<b>\$ 1,958,875</b>	<b>1.0%</b>

**Legislative Revised FY2026 Estimate (Feb. 2026) vs. Actual Revenues  
Year-to-Date Through MAY FY2026 Comparison**

	<b>Leg. Adopted MAY YTD FY2026</b>	<b>Actual MAY YTD FY2026</b>	<b>DOLLAR CHANGE</b>	<b>YTD % Chg. Actual/Adopt Comparison</b>
<b>ONGOING RECEIPTS</b>				
Net Sales and Use Tax (excl. cost of admin)	1,393,596,278	1,408,393,970	14,797,691	1.1%
Lottery	160,424,082	161,423,160	999,078	0.6%
Net Contractor's Excise Tax	201,583,037	201,685,655	102,617	0.1%
Insurance Company Tax	155,002,997	142,886,985	(12,116,012)	-7.8%
Unclaimed Property Receipts	61,384,827	61,384,827	0	0.0%
Licenses, Permits, and Fees	54,219,724	57,530,044	3,310,320	6.1%
Tobacco Taxes	38,330,639	38,642,018	311,380	0.8%
Trust Funds	52,387,402	52,387,122	(280)	0.0%
Net Transfers In (excluding one-time)	24,876,725	25,347,314	470,589	1.9%
Alcohol Beverage Tax	6,883,168	6,552,304	(330,865)	-4.8%
Bank Franchise Tax	28,509,704	34,672,266	6,162,562	21.6%
Charges for Goods and Services	11,261,293	11,375,178	113,885	1.0%
Telecommunications Tax	2,547,822	2,545,701	(2,121)	-0.1%
Severance Taxes	23,987,067	20,709,249	(3,277,819)	-13.7%
Investment Income and Interest	71,832,137	71,927,632	95,495	0.1%
Alcohol Beverage 2% Wholesale Tax	2,880,777	2,769,166	(111,611)	-3.9%
<b>SUBTOTAL (ONGOING RECEIPTS)</b>	<b>\$ 2,289,707,680</b>	<b>\$ 2,300,232,591</b>	<b>\$ 10,524,911</b>	<b>0.5%</b>
<b>ONE-TIME RECEIPTS</b>				
One-Time Sales and Use Tax	-	4,135,875	4,135,875	N/A
Bank Franchise Tax Prior Year Revenue	155,380	1,761,519	1,606,139	1033.7%
<b>SUBTOTAL (ONE-TIME RECEIPTS)</b>	<b>\$ 155,380</b>	<b>\$ 5,897,394</b>	<b>\$ 5,742,014</b>	<b>3695.5%</b>
<b>GRAND TOTAL</b>	<b>\$ 2,289,863,060</b>	<b>\$ 2,306,129,985</b>	<b>\$ 16,266,925</b>	<b>0.7%</b>

# Legislative Revised FY2026 vs. Actual FY2026 Receipts

■ Leg. Revised FY2026 Receipts    
 ■ Actual FY2026 Receipts    
  Actual vs. Adopted



Through 11 months, total ongoing receipts are \$10.5 million MORE than the Legislative Revised FY2026 estimate.