

The South Dakota Economy

September 3, 2013

Employment growth in South Dakota

- On an annual basis during 2012, South Dakota nonfarm employment levels were 6,500 jobs higher than 2011, or an increase of 1.6% after annual benchmark revisions. The growth in 2012 was the largest annual employment gain since 2007. In addition, South Dakota's total nonfarm employment in 2012 was higher than the peak employment level that was reached before the '07-'09 national recession, meaning South Dakota's employment transitioned from a recovery phase to an expansion phase during 2012.
- As of July 2013, South Dakota's total employment level was 1.5% higher than the peak employment reached before the '07-'09 recession. In comparison, US employment was still 1.5% below the previous peak employment as of July 2013.
- In July 2013, total SD nonfarm employment was up 4,500 jobs or 1.1%, compared to July 2012.
 - Sectors that are currently experiencing year-over-year growth (July 2013 compared to July 2012 levels) include: trade, transportation, and utilities (+3.9%); leisure and hospitality (+3.9%); financial activities (+3.1%); education and health services (+1.2%); manufacturing (+0.5%); and, government (+0.4%).
 - Sectors that are experiencing year-over-year declines in July include: other services (-1.9%), professional and business services (-2.8%), and mining, logging, and construction (-6.7%).

The unemployment rate continues to be one of the lowest in the nation.

- The unemployment rate in South Dakota was the second lowest in the nation in July at 3.9%.
 - South Dakota's unemployment rate in July 2013 was the same as last month and 0.6% lower than last year.
- The U.S. unemployment rate was 7.4% in July 2013.

Income growth in South Dakota.

- South Dakota's preliminary personal income for the 1st quarter of 2013 increased 1.6% and was the only state to register a positive growth rate of the 50 states. The US average growth rate over the same time period was -1.2%.
- South Dakota's preliminary personal income for 2012 on an annual basis decreased 0.2% compared to 2011. The decrease is attributed to a decrease in farm income.
 - In 2012, South Dakota's farm income decreased 27.1% compared to 2011, which was the primary reason for the decrease in total personal income in 2012. South Dakota nonfarm income grew by 4.0% in 2012 compared to 2011, which was higher than the US growth rate of 3.5% over the same time period.
- Over the past four years (2008-2012), the average annual growth of South Dakota's personal income was 3.1%, which ranked second of all states. This compares to the US growth in personal income of 1.9% over the same time period.
- South Dakota's preliminary per capita personal income in 2012 was \$43,659, which ranked 18th in the nation and was 2.3% higher than the US per capita personal income of \$42,693 during 2012.

The housing market.

- In the last twelve months (August 2012 – July 2013) there were 1,564 more total family housing units authorized by building permits in South Dakota than there were the same period before.*
- The value of total family housing building permits is \$185.40 million higher in the last twelve months compared to the same period the year before. *

The agricultural economy.

- South Dakota's farm real estate, including land and buildings, averaged \$1,800 for 2013. This was an increase of \$400 per acre or 29 percent higher than the 2012 level, according to USDA's National Agriculture Statistics Service. Cropland averaged \$3,020 per acre, up 30% from last year. Pastureland was valued at \$710 per acre, an increase of \$120/acre compared to a year ago.
- Based on August 1st conditions, the SD corn crop is forecast at 731 million bushels, up 37% from last year according to the National Agriculture Statistics Service. Yield is forecast at 138 bushels per acre, up 37 bushels from 2012.
- Soybean production in SD is forecast at 167 million bushels, 18% higher than last year. Yield is forecast at 36 bushels per acre, up 6 bushels from 2012.
- As of August 25th, topsoil conditions were rated 45% short to very short, while subsoil conditions were rated 46% short to very short.
- As of August 1st, South Dakota's 1,000+ capacity feedlots reported 180,000 cattle on feed for the slaughter market. This was down 10% from last month and down 5% from a year ago.

* Building permit statistics are from monthly reporting places only.

Economic Indicators for the State of South Dakota for the latest 12 Month Period

Category	Time Period												12 Month Avg/Total
	Aug-12	Sep-12	Oct-12	Nov-12	Dec-12	Jan-13	Feb-13	Mar-13	Apr-13	May-13	Jun-13	Jul-13	
Nonfarm Employment Data (information is seasonally adjusted by BLS and expressed in thousands)													
Total Nonfarm	413.50	415.30	415.70	415.70	415.90	417.80	419.00	419.40	417.80	420.80	418.40	418.40	417.31
change from prior year	5.30	6.50	6.30	5.80	5.00	6.00	6.90	6.20	3.00	6.60	4.00	4.50	5.51
% change from prior year	1.30	1.59	1.54	1.41	1.22	1.46	1.67	1.50	0.72	1.59	0.97	1.09	1.34
N.R., Mining & Const.	20.60	20.50	20.30	20.30	20.40	20.30	20.50	20.40	19.50	20.30	19.90	19.40	20.20
change from prior year	(0.60)	(0.90)	(1.10)	(0.90)	(1.10)	(1.50)	(1.40)	(1.60)	(2.30)	(1.00)	(1.20)	(1.40)	(1.25)
% change from prior year	(2.83)	(4.21)	(5.14)	(4.25)	(5.12)	(6.88)	(6.39)	(7.27)	(10.55)	(4.69)	(5.69)	(6.73)	(5.83)
Manufacturing Employment	41.30	41.50	41.50	41.70	41.70	41.80	41.60	41.80	41.90	41.80	41.90	41.60	41.68
change from prior year	1.80	1.90	1.60	1.50	1.30	1.30	0.80	1.00	0.80	0.70	0.60	0.20	1.13
% change from prior year	4.56	4.80	4.01	3.73	3.22	3.21	1.96	2.45	1.95	1.70	1.45	0.48	2.77
Trade, Transp., & Utilities	83.40	83.40	83.30	83.00	82.60	84.00	84.10	84.50	84.50	86.50	85.20	86.20	84.23
change from prior year	1.60	1.50	1.30	0.80	0.30	1.40	1.40	1.70	1.50	3.40	2.00	3.20	1.68
% change from prior year	1.96	1.83	1.59	0.97	0.36	1.69	1.69	2.05	1.81	4.09	2.40	3.86	2.03
Financial Activities	28.90	29.00	29.20	29.20	29.20	29.40	29.80	29.70	29.60	29.20	29.60	29.70	29.38
change from prior year	0.90	1.10	1.20	1.20	1.20	1.30	1.70	1.60	1.20	0.50	0.90	0.90	1.14
% change from prior year	3.21	3.94	4.29	4.29	4.29	4.63	6.05	5.69	4.23	1.74	3.14	3.13	4.04
Prof. and Business Services	29.20	29.30	29.10	29.00	29.30	28.50	28.30	28.00	28.30	28.20	28.00	28.30	28.63
change from prior year	0.40	0.20	0.00	(0.10)	0.20	(0.50)	(0.70)	(1.20)	(0.90)	(0.80)	(1.10)	(0.80)	(0.44)
% change from prior year	1.39	0.69	0.00	(0.34)	0.69	(1.72)	(2.41)	(4.11)	(3.08)	(2.76)	(3.78)	(2.75)	(1.52)
Educ. & Health Services	67.30	67.50	67.70	67.80	68.10	68.30	68.40	68.80	68.60	68.70	68.70	68.30	68.18
change from prior year	1.60	2.10	2.10	2.00	2.30	2.30	2.40	2.60	1.30	1.50	1.10	0.80	1.84
% change from prior year	2.44	3.21	3.20	3.04	3.50	3.48	3.64	3.93	1.93	2.23	1.63	1.19	2.78
Leisure & Hospitality	44.10	44.20	44.90	45.00	45.20	45.70	46.20	46.30	46.10	46.70	46.00	45.90	45.53
change from prior year	0.60	0.40	1.20	1.20	1.30	1.50	2.00	1.90	1.70	2.30	1.60	1.70	1.45
% change from prior year	1.38	0.91	2.75	2.74	2.96	3.39	4.52	4.28	3.83	5.18	3.60	3.85	3.29
Other Services	15.90	15.80	15.80	15.80	15.70	15.70	15.90	16.00	16.00	15.50	15.70	15.60	15.78
change from prior year	0.20	0.20	0.20	0.10	0.00	(0.10)	0.10	0.20	0.20	(0.30)	(0.10)	(0.30)	0.03
% change from prior year	1.27	1.28	1.28	0.64	0.00	(0.63)	0.63	1.27	1.27	(1.90)	(0.63)	(1.89)	0.21
Government	76.70	78.00	77.90	77.90	77.80	78.00	78.20	77.90	77.20	77.70	77.40	77.30	77.67
change from prior year	(0.90)	0.30	0.20	0.30	(0.10)	0.40	0.90	0.30	(0.30)	0.40	0.40	0.30	0.18
% change from prior year	(1.16)	0.39	0.26	0.39	(0.13)	0.52	1.16	0.39	(0.39)	0.52	0.52	0.39	0.24
NonFarm (excluding Govt.)	336.8	337.3	337.8	337.8	338.1	339.8	340.8	341.5	340.6	343.1	341.0	341.1	339.64
change from prior year	6.2	6.2	6.1	5.5	5.1	5.6	6.0	5.9	3.3	6.2	3.6	4.2	5.32
% change from prior year	1.88	1.87	1.84	1.66	1.53	1.68	1.79	1.76	0.98	1.84	1.07	1.25	1.59

Economic Indicators for the State of South Dakota for the latest 12 Month Period

Category	Time Period												12 Month Avg/Total
	Aug-12	Sep-12	Oct-12	Nov-12	Dec-12	Jan-13	Feb-13	Mar-13	Apr-13	May-13	Jun-13	Jul-13	
Number of Housing Units Authorized by Building Permits (information is not seasonally adjusted):													
One-Family Units - S.D. Total	221	255	281	171	118	85	112	234	435	230	224	246	2,612
change from prior year	51	93	119	104	58	18	32	56	227	(2)	(2)	33	787
Total Family Units - S.D. Total	265	532	350	341	166	285	133	566	628	324	369	339	4,298
change from prior year	(1)	219	118	253	89	154	41	349	365	67	(74)	(16)	1564
Total Family Units - Minnehaha Co.	114	268	123	128	46	170	48	316	470	94	122	94	1,993
change from prior year	(24)	129	50	107	18	151	5	231	386	(15)	(156)	(27)	855
Total Family Units - Pennington Co.	38	31	84	28	50	19	25	88	51	38	43	56	551
change from prior year	14	1	65	17	25	(2)	4	65	3	12	(5)	22	221
Value of Building Permits Issued (information is not seasonally adjusted and is expressed in millions of dollars):													
One-Family units - S.D. Total	40.17	40.69	43.87	31.12	16.25	15.72	17.93	23.07	69.60	39.86	41.32	41.57	421.17
change from prior year	11.50	12.52	18.17	19.90	6.31	3.83	4.16	(6.13)	35.40	1.76	4.28	5.67	117.37
Total Family units - S.D. Total	44.59	61.76	50.63	43.49	19.79	32.57	20.12	51.22	85.56	46.34	51.65	46.81	554.52
change from prior year	9.13	21.81	19.92	30.65	7.87	16.89	5.68	19.53	48.02	6.74	(1.09)	0.26	185.40
Total Family Units - Minnehaha Co.	16.09	29.82	19.25	17.80	6.50	9.94	6.81	18.86	60.36	13.35	16.64	16.77	232.19
change from prior year	0.72	15.10	7.40	14.09	1.77	6.61	0.88	5.39	47.72	(3.33)	(12.14)	(0.33)	83.89
Total Family Units - Pennington Co.	5.67	6.22	8.78	5.92	5.19	3.41	4.67	15.02	7.70	6.52	7.69	5.45	82.22
change from prior year	1.86	0.74	5.68	4.16	1.45	(0.21)	1.09	11.20	0.75	1.46	0.02	(0.98)	27.22

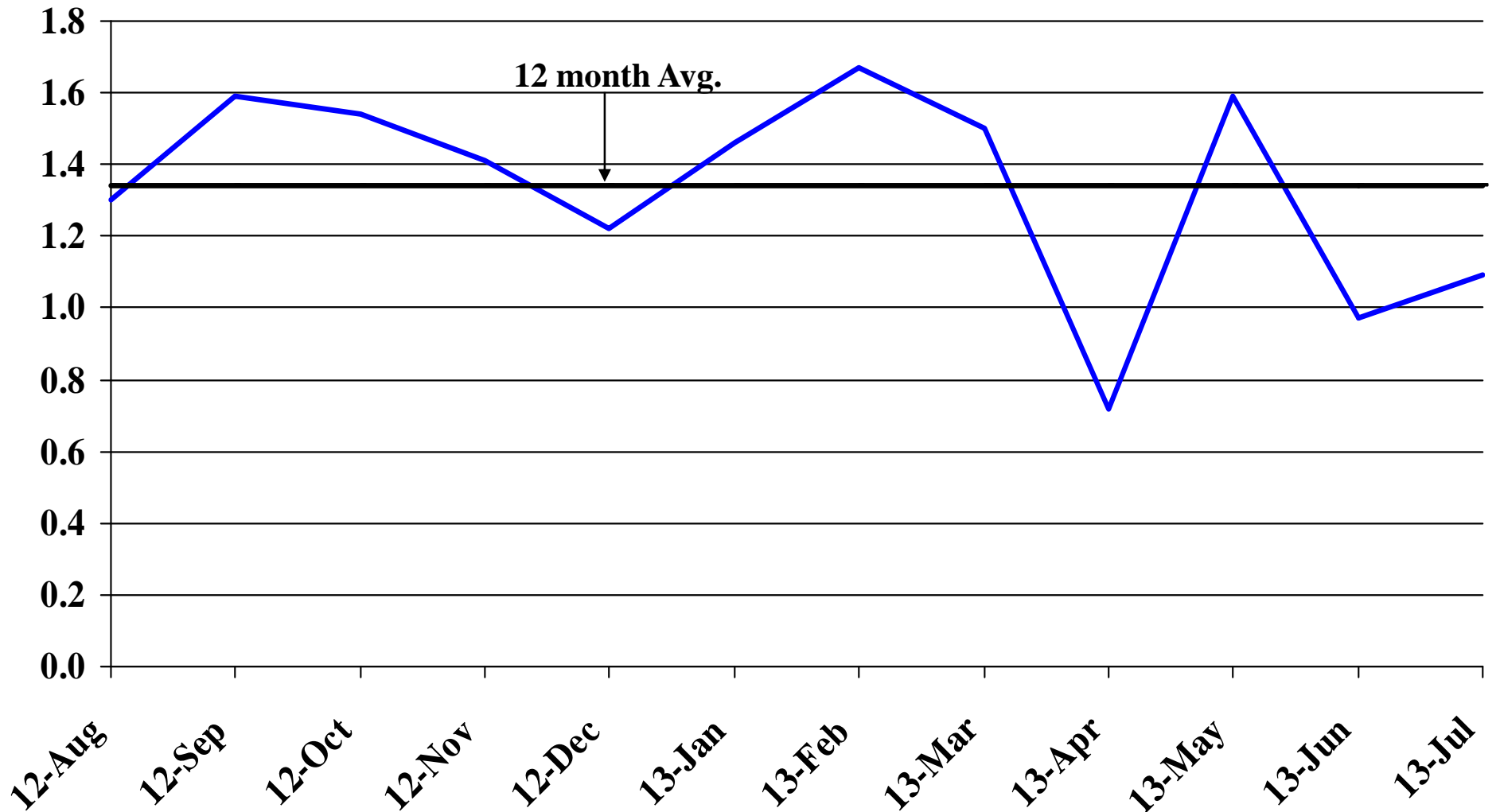
Automobile Data (information is not seasonally adjusted)													
New Non-Comm. Veh. Titled	3,358	3,055	3,393	3,164	3,136	3,863	3,293	2,851	3,674	3,762	3,396	3,767	40,712
change from prior year	121	180	260	486	(73)	140	869	(74)	247	181	(76)	(111)	2,150

Agriculture (information is not seasonally adjusted)													
Wheat	8.23	8.31	8.41	8.56	8.48	8.10	8.05	7.75	7.69	7.79	7.77	7.18	8.03
change from prior year	0.47	0.60	0.58	0.62	0.63	1.11	0.80	0.51	0.73	0.67	0.48	(0.85)	0.53
Corn	7.39	6.83	6.61	6.82	6.71	6.85	6.88	7.04	6.59	6.88	6.80	6.58	6.83
change from prior year	0.64	0.21	0.94	1.14	1.06	0.92	0.82	0.87	0.52	0.78	0.65	(0.15)	0.70
Soybeans	16.00	14.20	13.80	14.20	14.20	13.90	14.40	14.40	14.00	14.60	14.70	14.90	14.44
change from prior year	3.00	2.70	2.30	2.70	3.10	2.30	2.40	1.60	0.30	1.30	1.20	-	1.91
Hay	204.00	206.00	221.00	209.00	213.00	211.00	216.00	221.00	223.00	239.00	221.00	178.00	213.50
change from prior year	102.00	83.00	94.00	84.00	77.00	89.00	93.00	99.00	96.00	116.00	79.00	7.00	84.92

* Housing permit statistics are from monthly reporting places only.

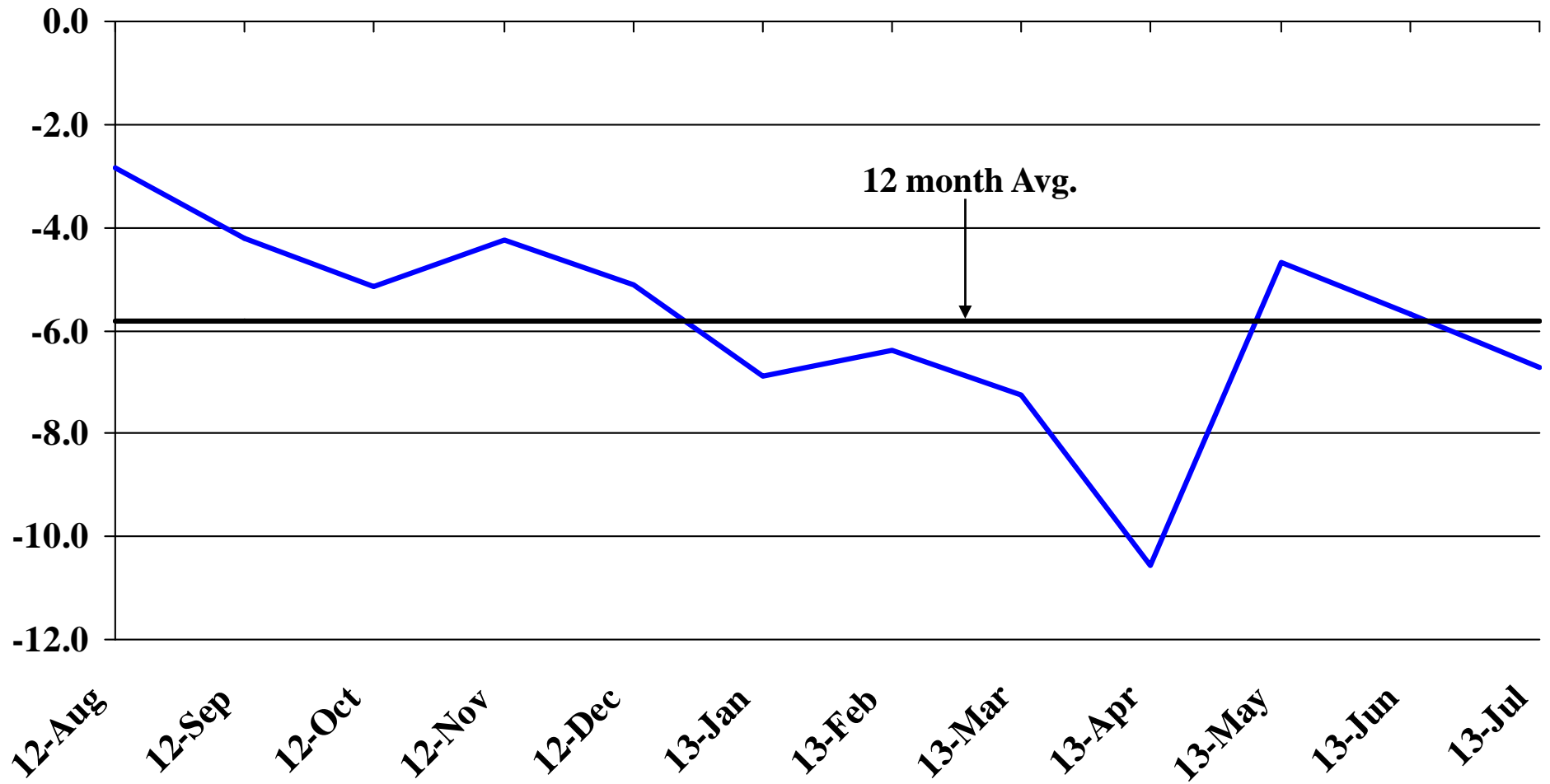
Recent Trends in Nonfarm Employment

Percent Change



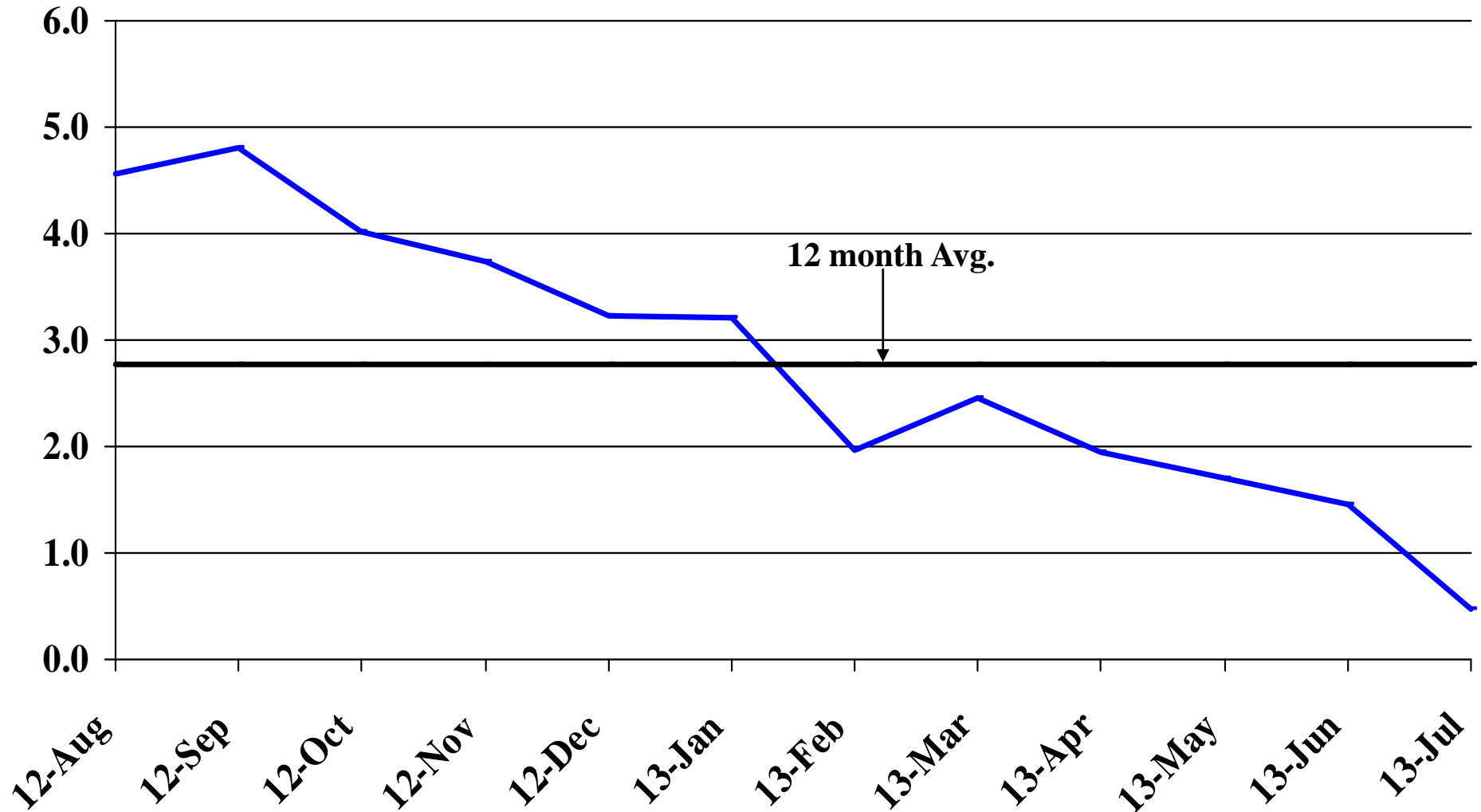
Recent Trends in Natural Resources, Mining and Construction Employment

Percent Change



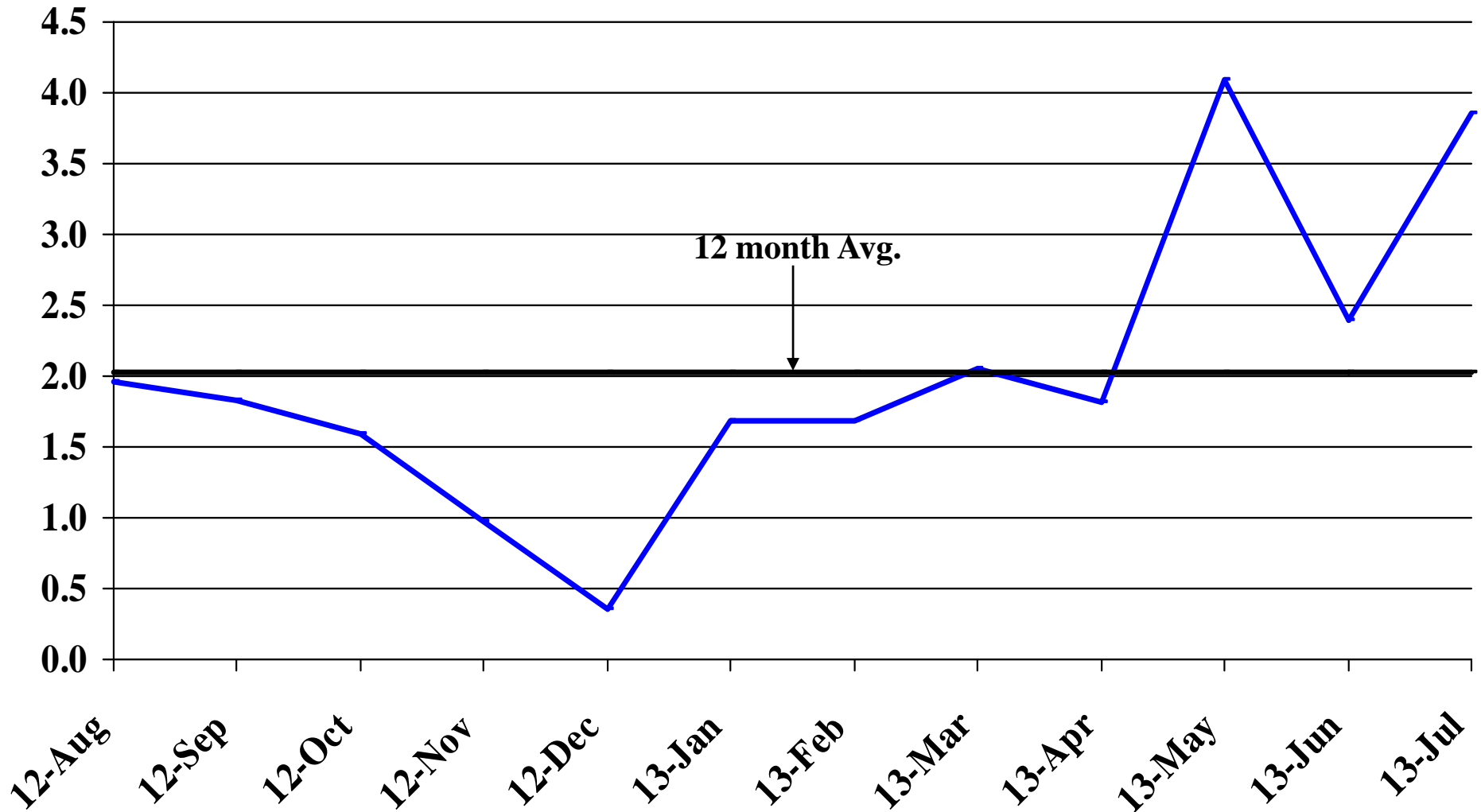
Recent Trends in Manufacturing Employment

Percent Change



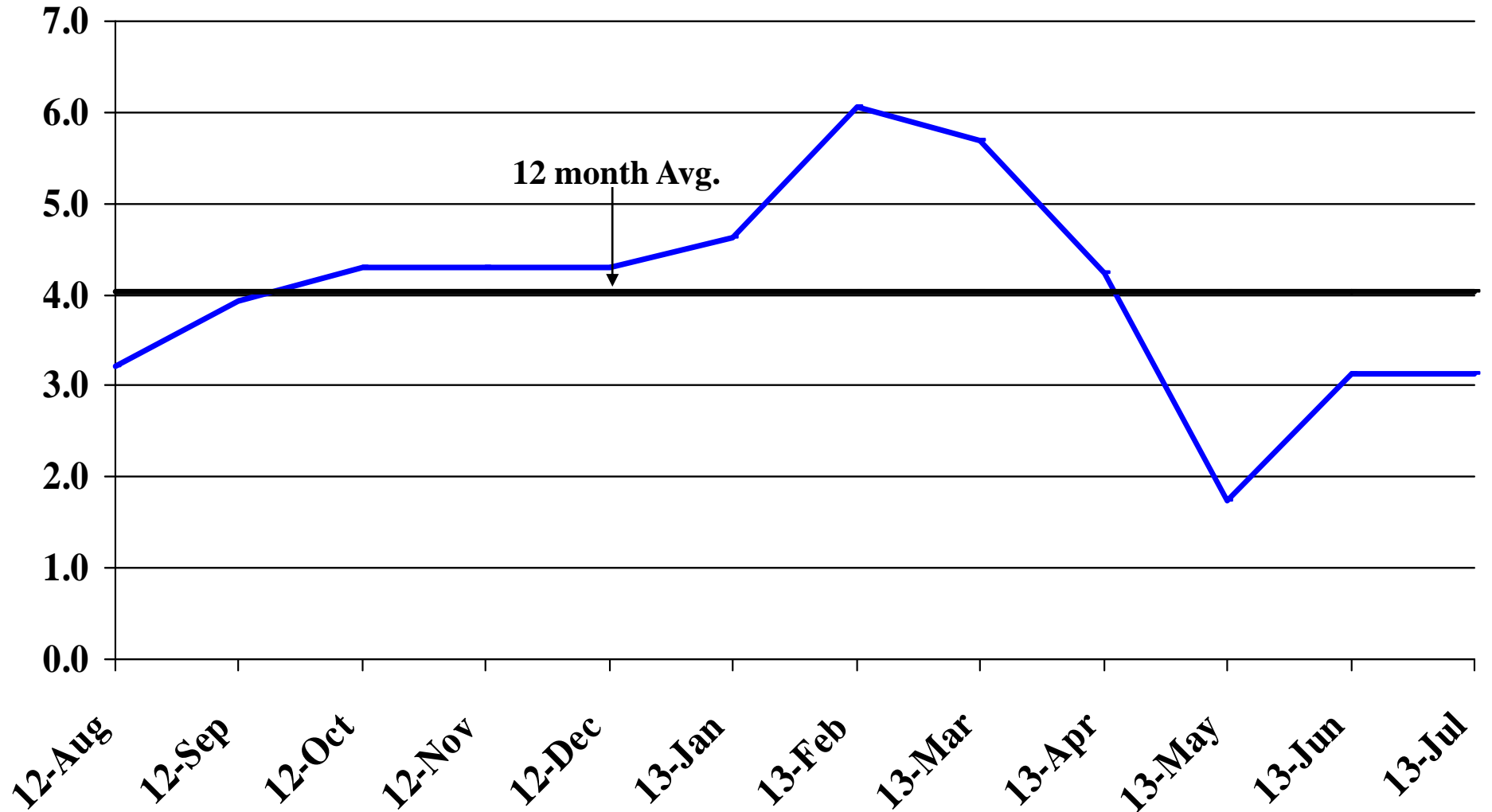
Recent Trends in Trade, Transportation, and Utilities Employment

Percent Change



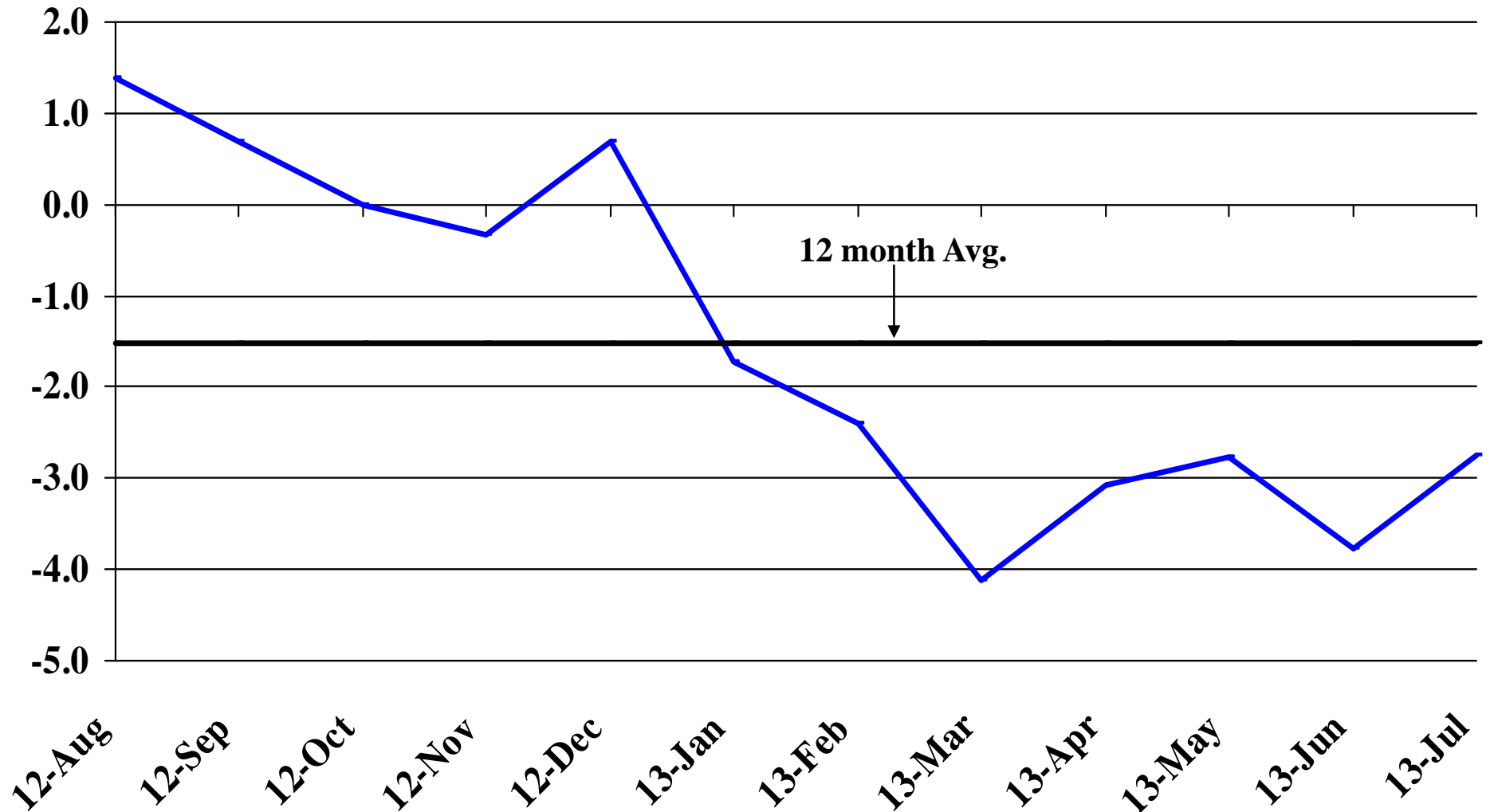
Recent Trends in Financial Activities Employment

Percent Change



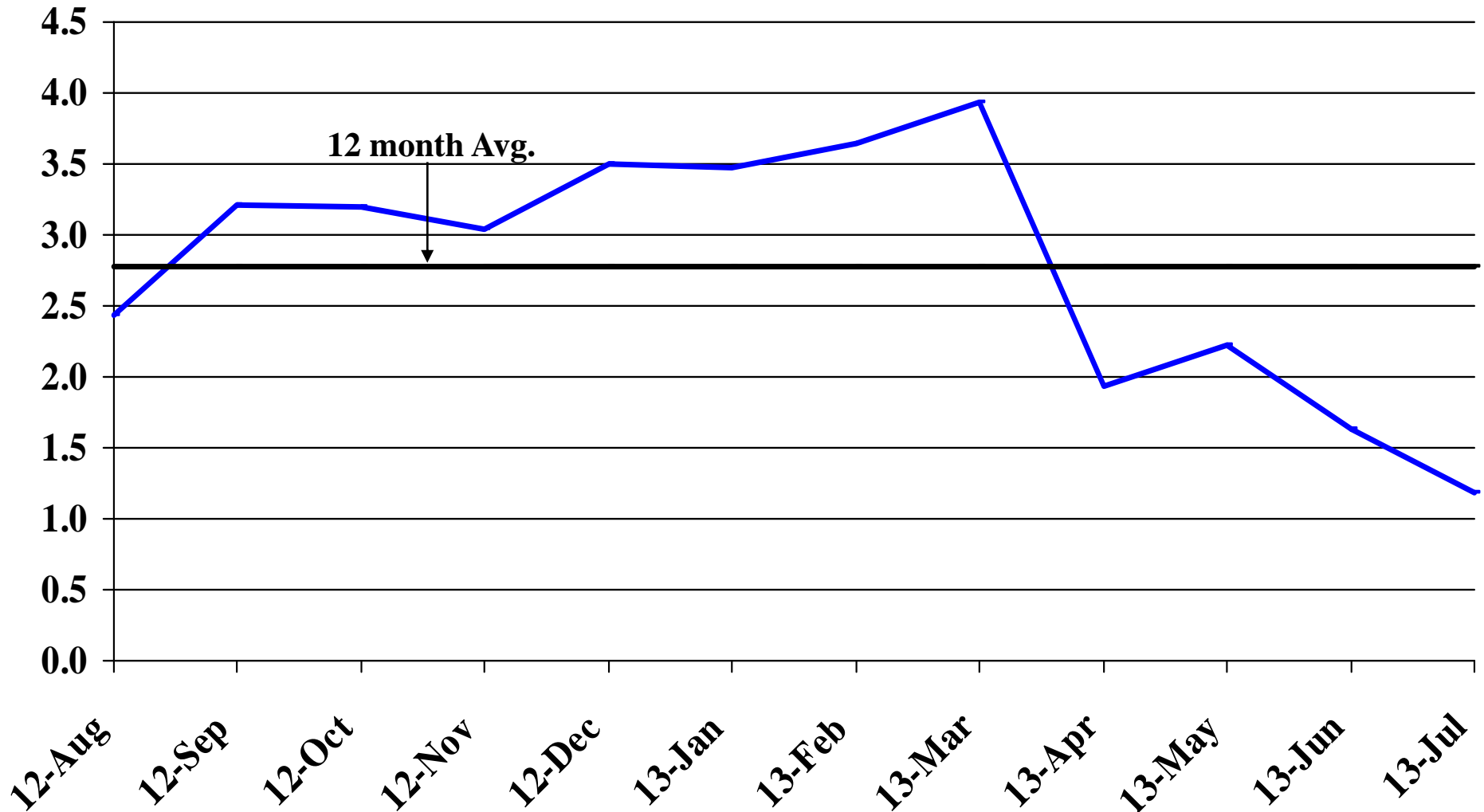
Recent Trends in Professional and Business Services Employment

Percent Change



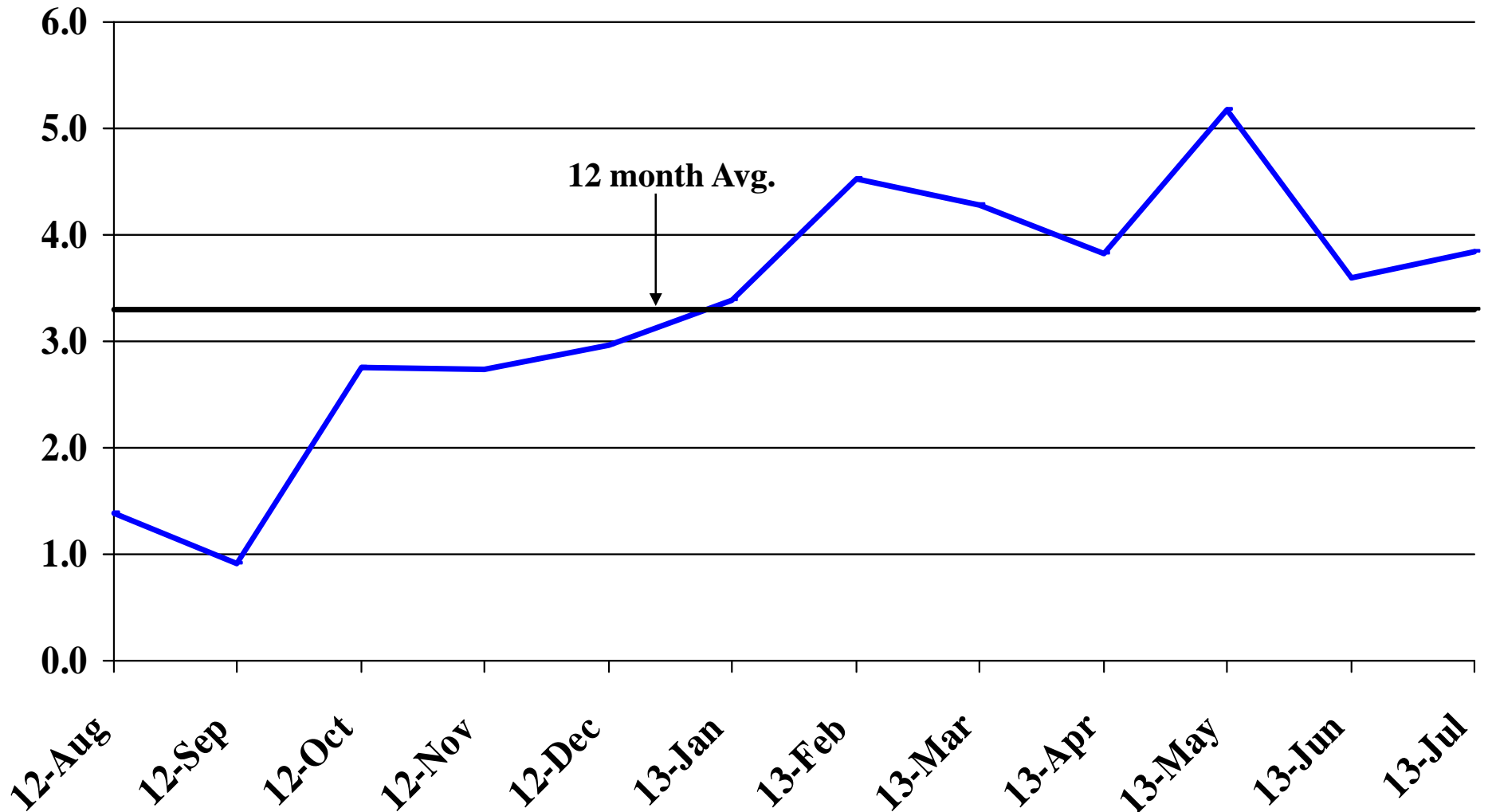
Recent Trends in Educational and Health Services Employment

Percent Change



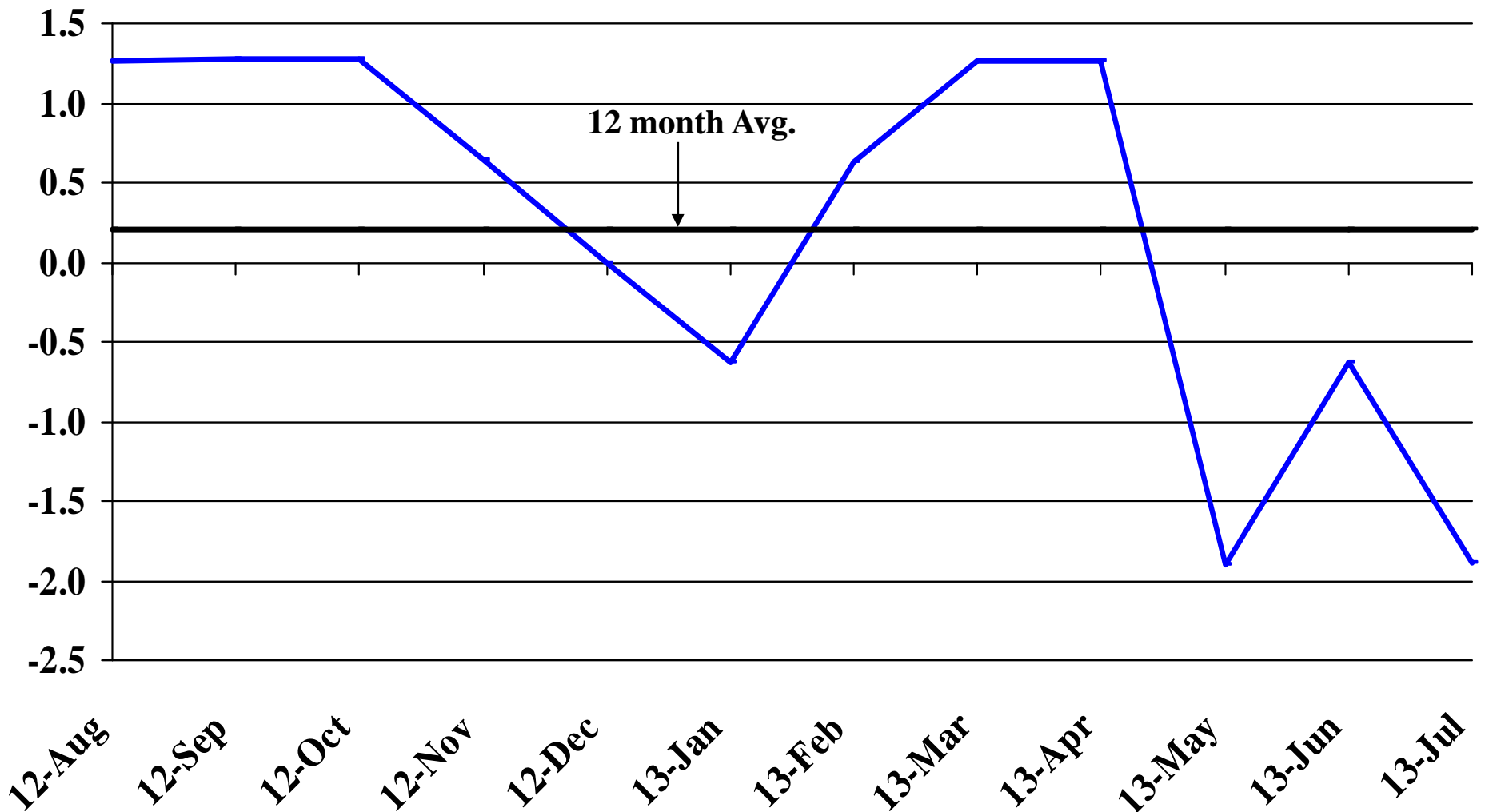
Recent Trends in Leisure and Hospitality Employment

Percent Change



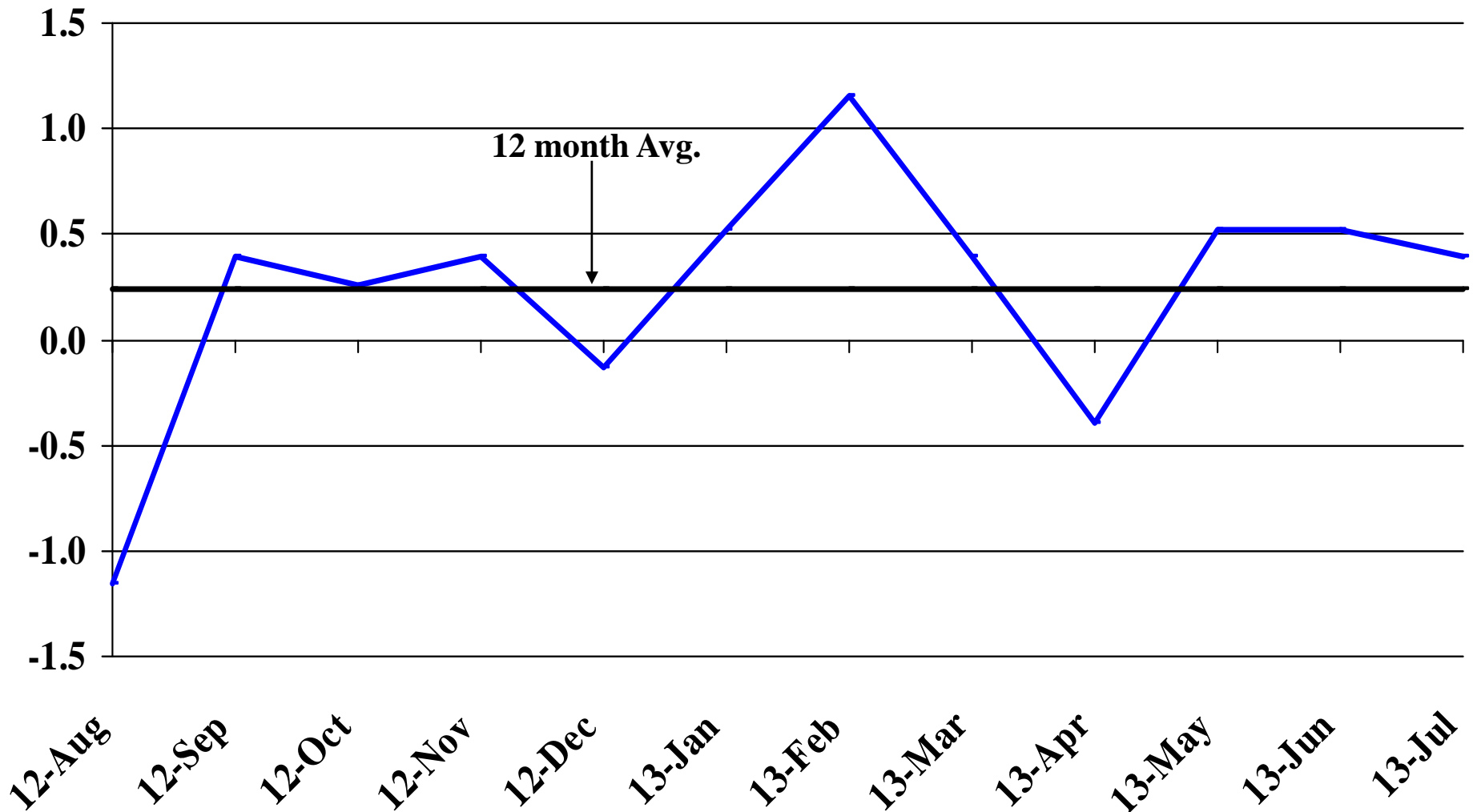
Recent Trends in Other Services Employment

Percent Change



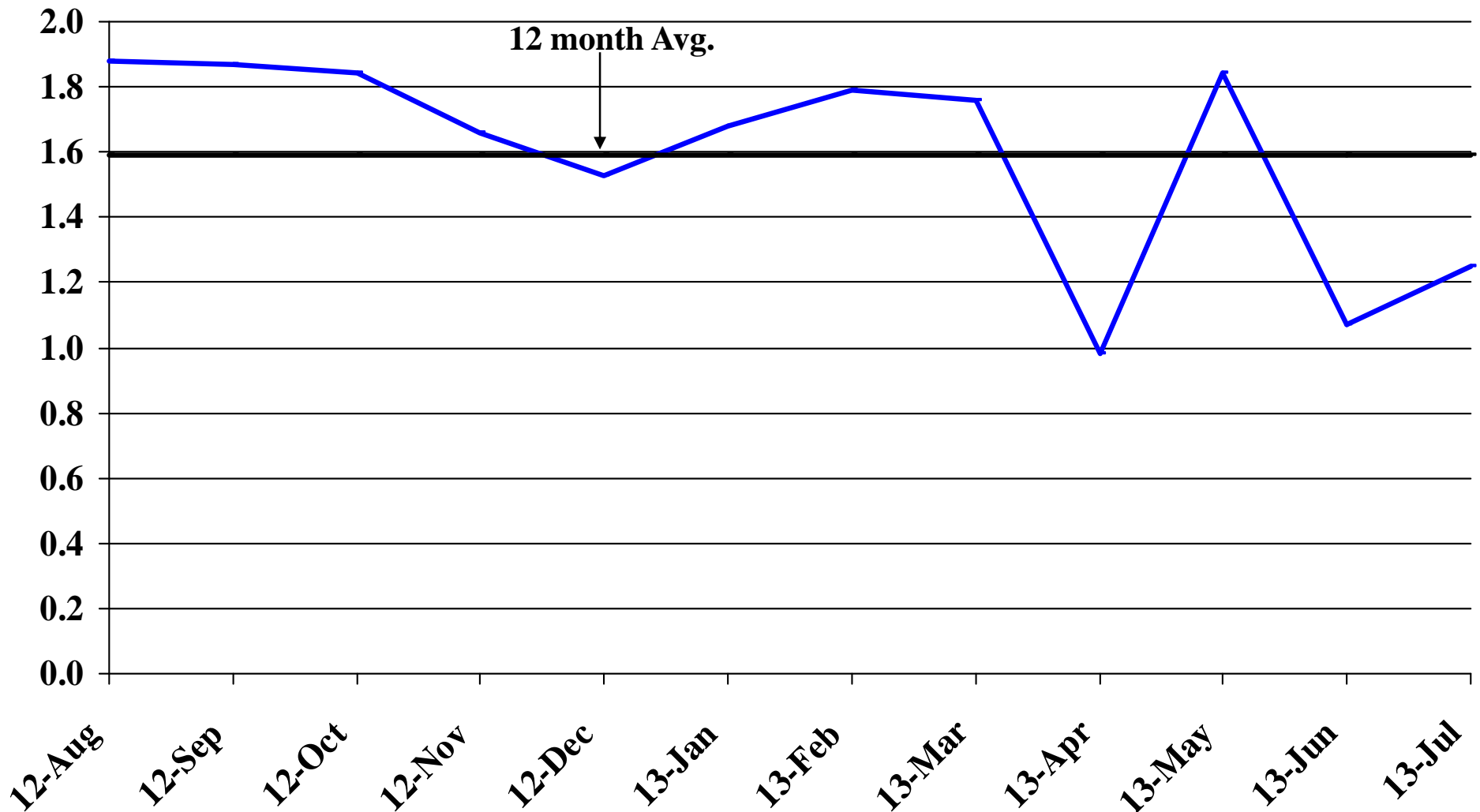
Recent Trends in Government Employment

Percent Change

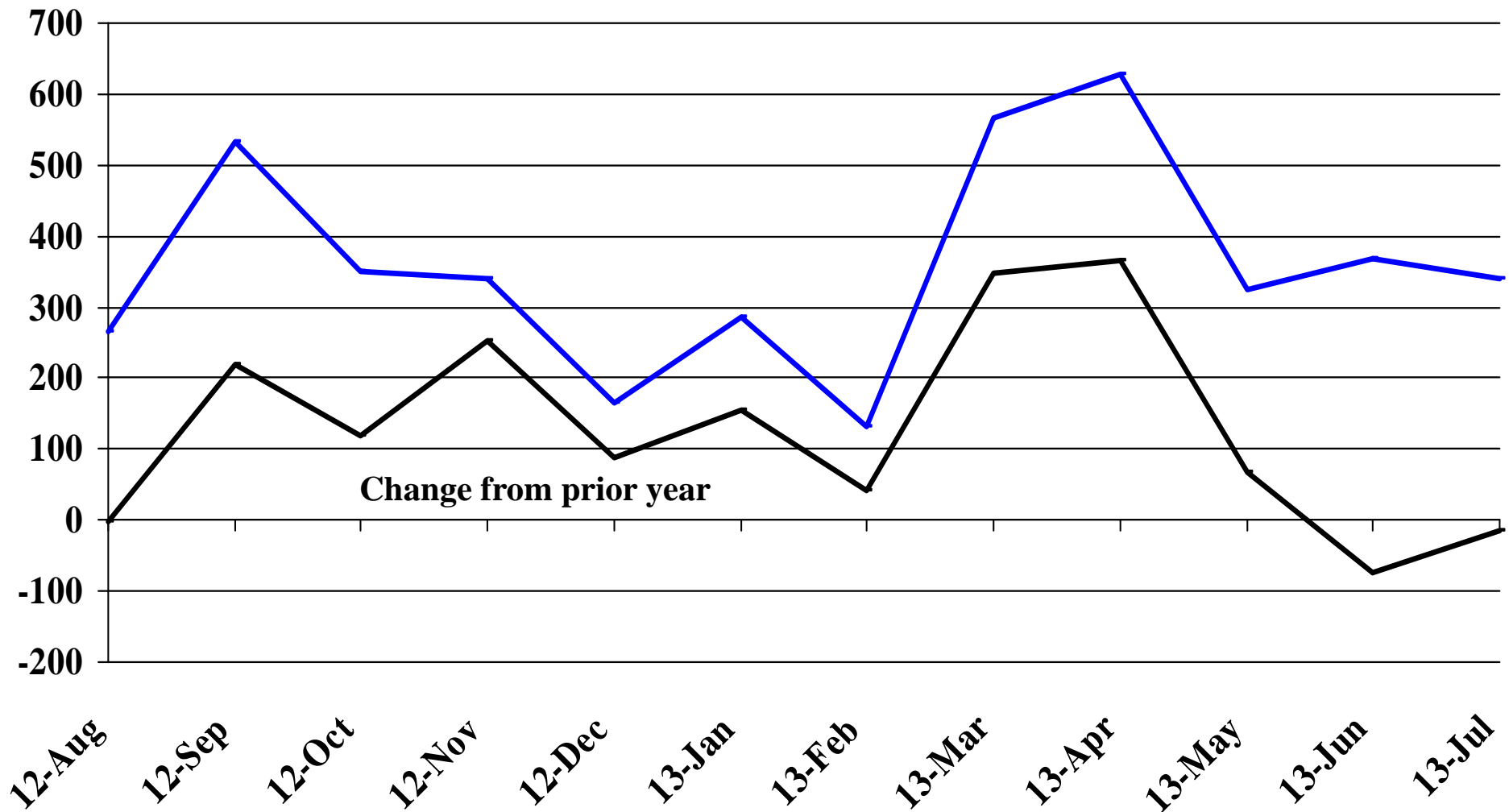


Recent Trends in Nonfarm Employment (excluding Government Employment)

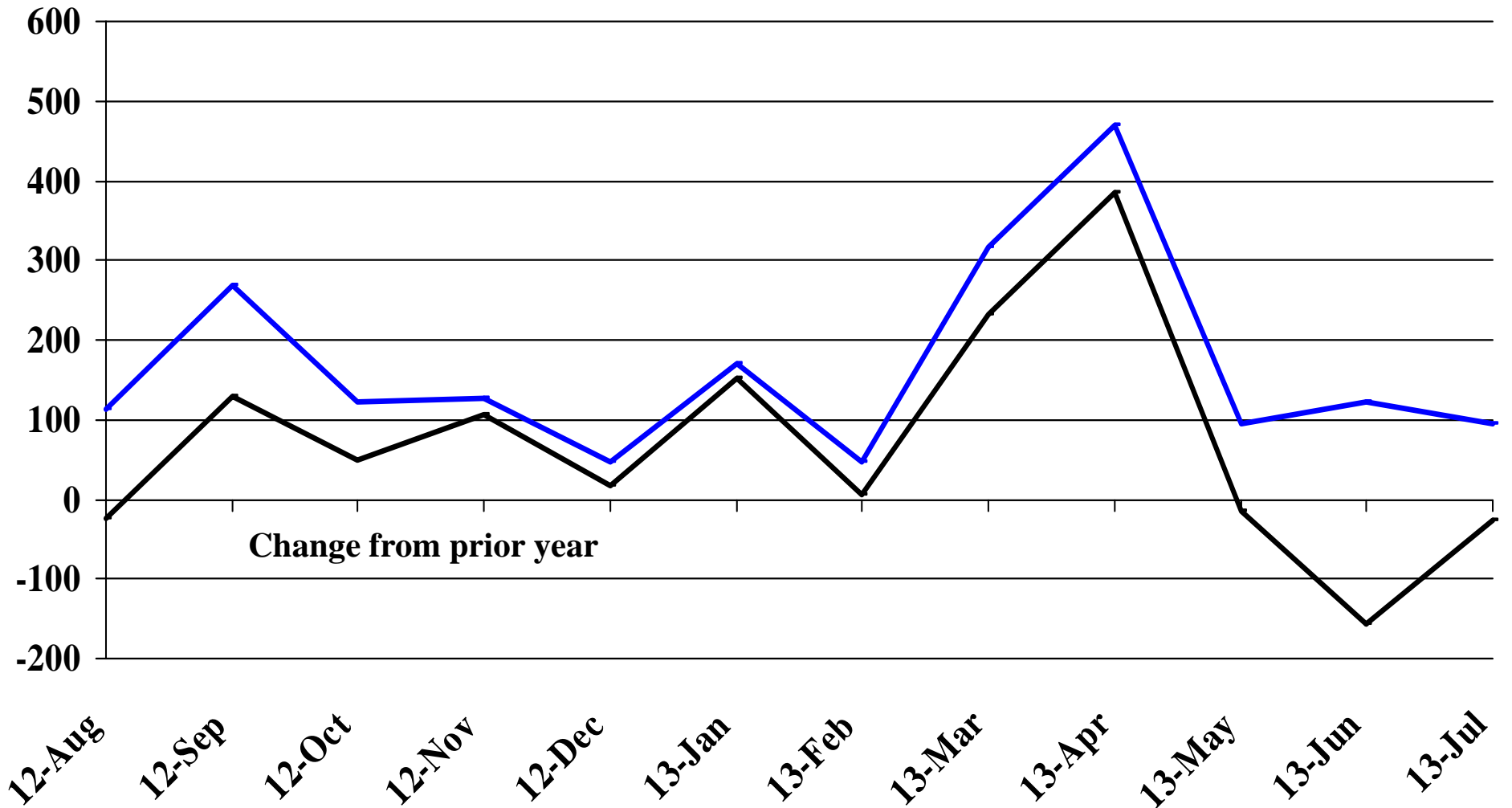
Percent Change



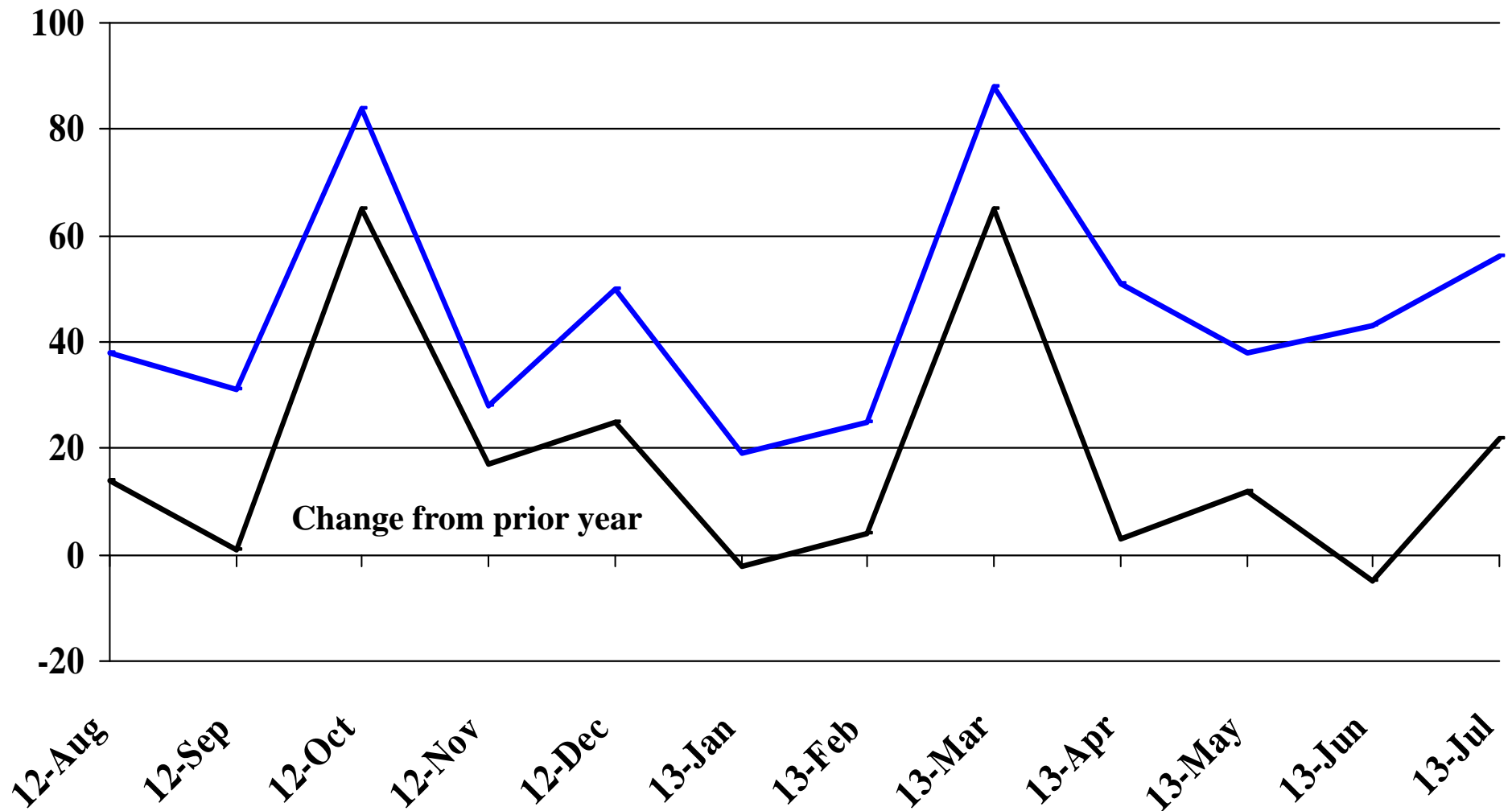
Recent Trends in the Number of Units Authorized by Residential Building Permits for South Dakota



Recent Trends in the Number of Residential Units Authorized by Building Permits for Minnehaha County

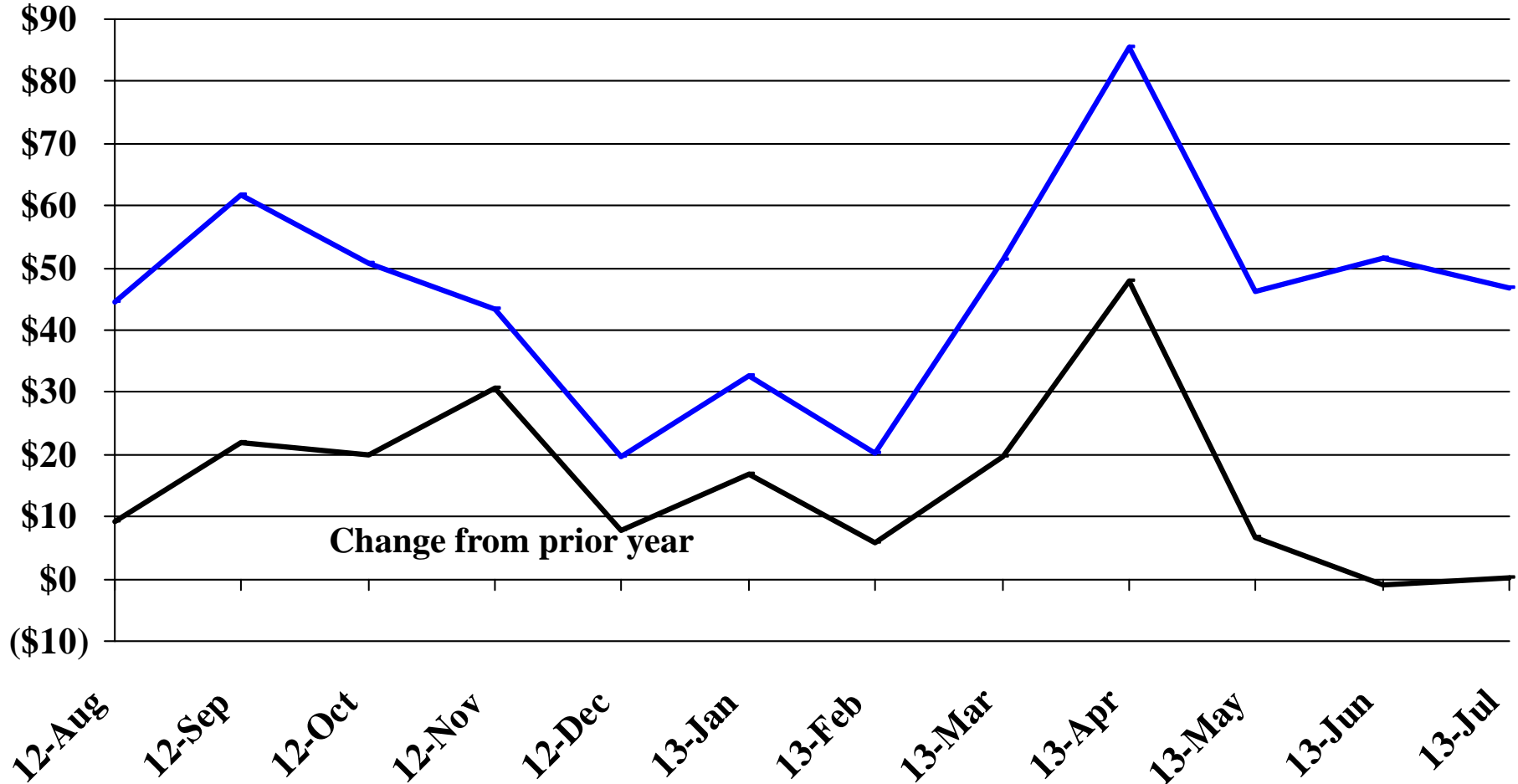


Recent Trends in the Number of Residential Units Authorized by Building Permits for Pennington County



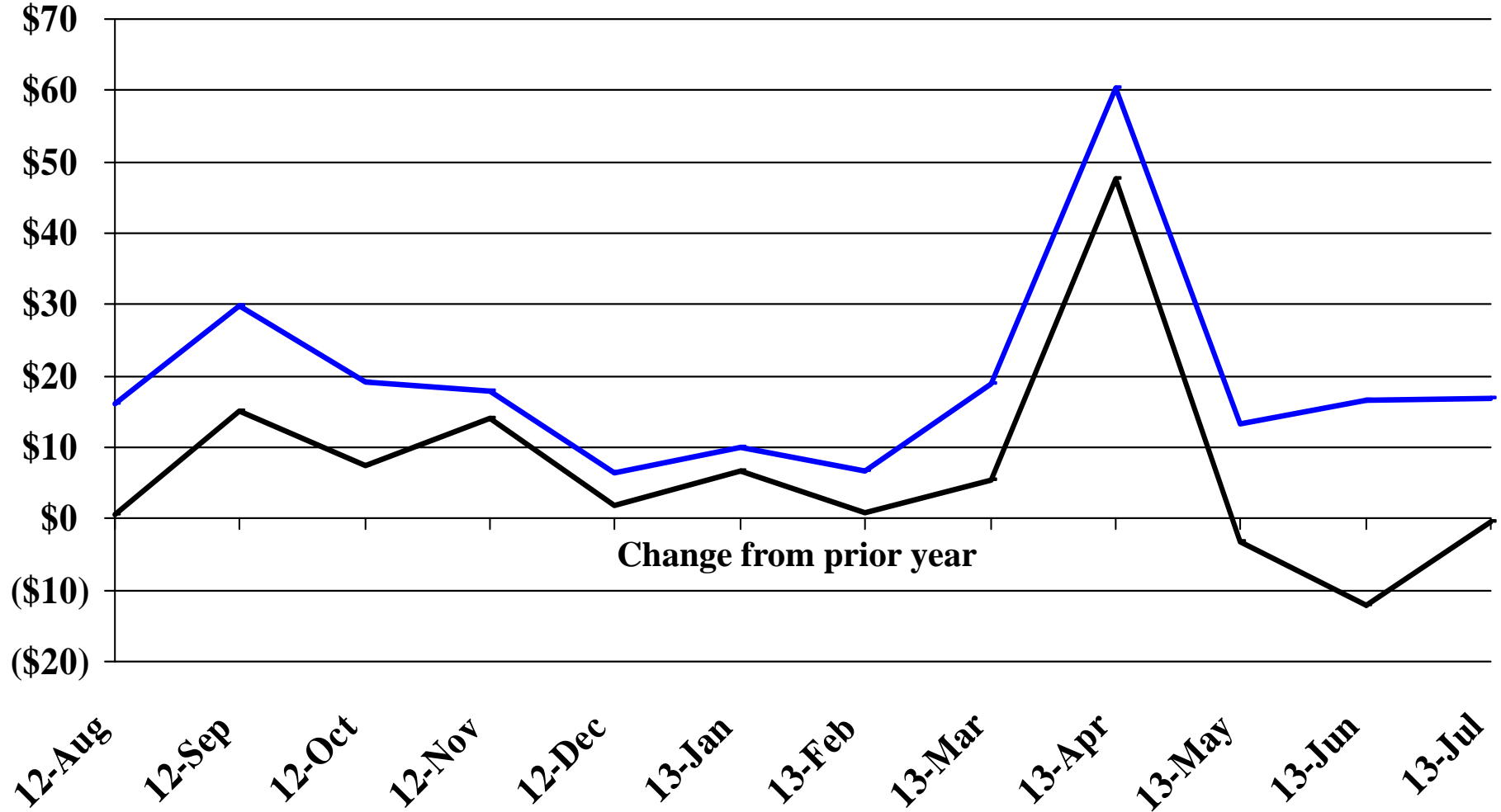
Recent Trends in the Value of Residential Building Permits Issued for South Dakota

Millions



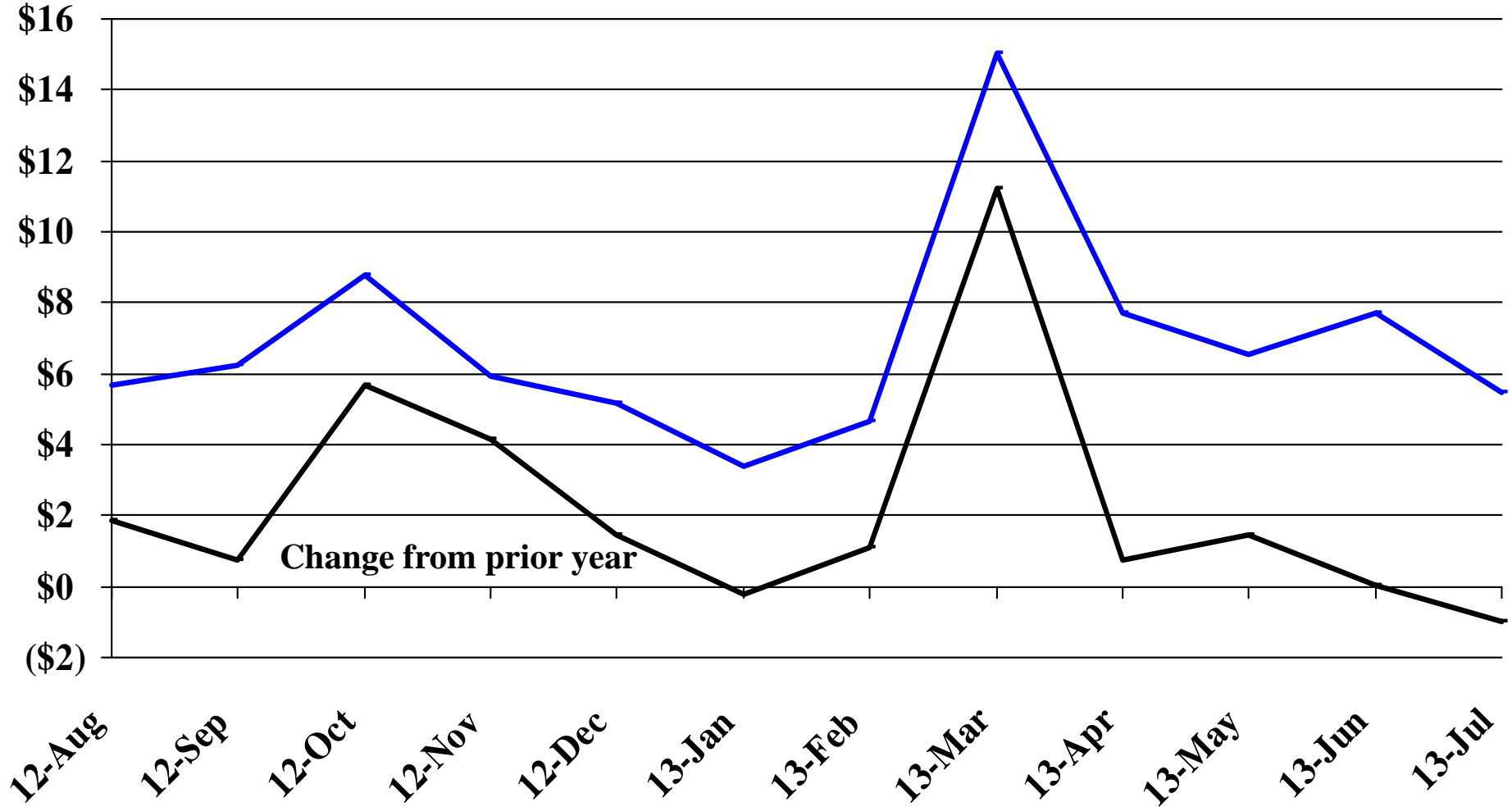
Recent Trends in the Value of Residential Building Permits Issued for Minnehaha County

Millions

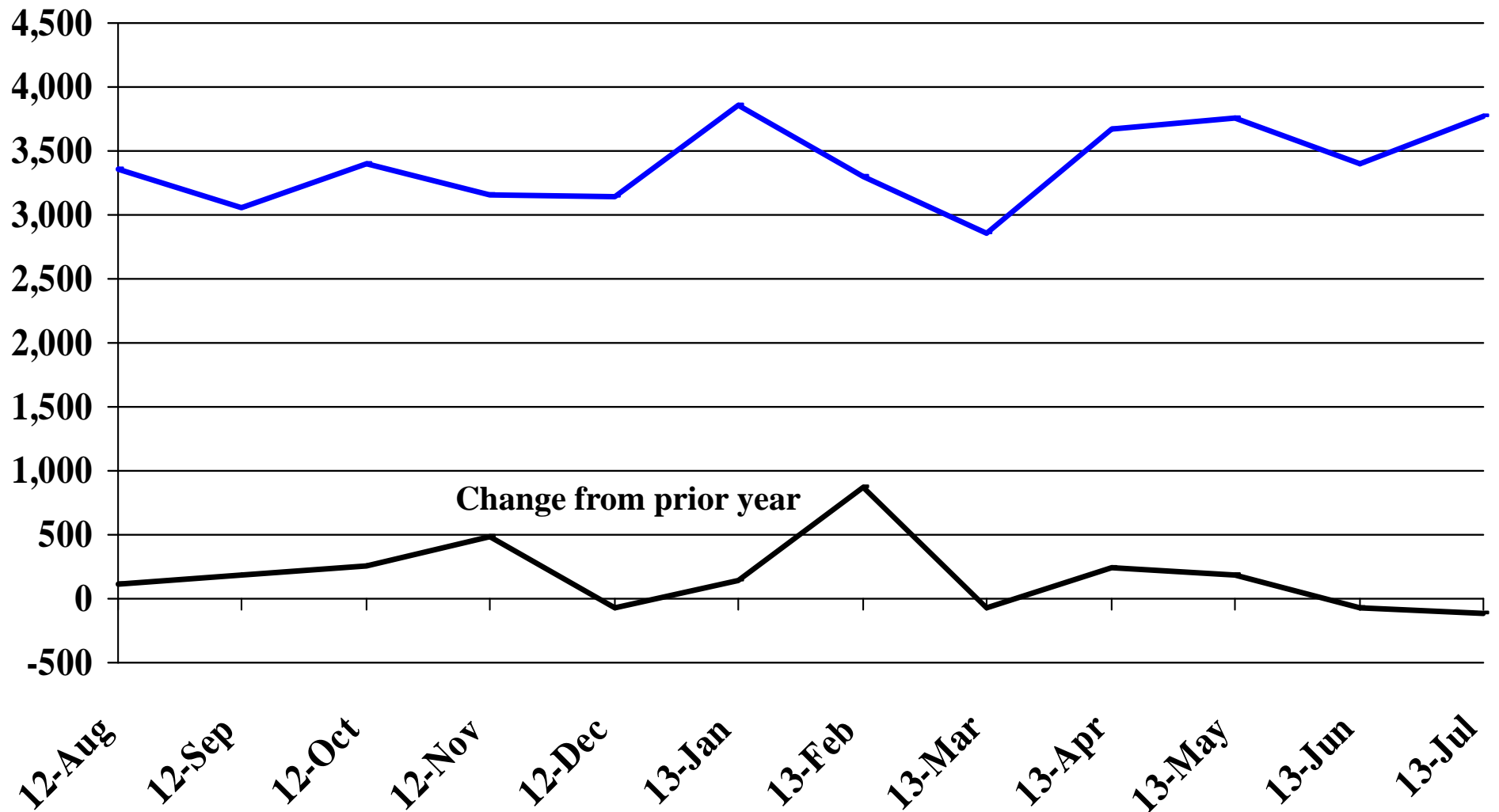


Recent Trends in the Value of Residential Building Permits Issued for Pennington County

Millions

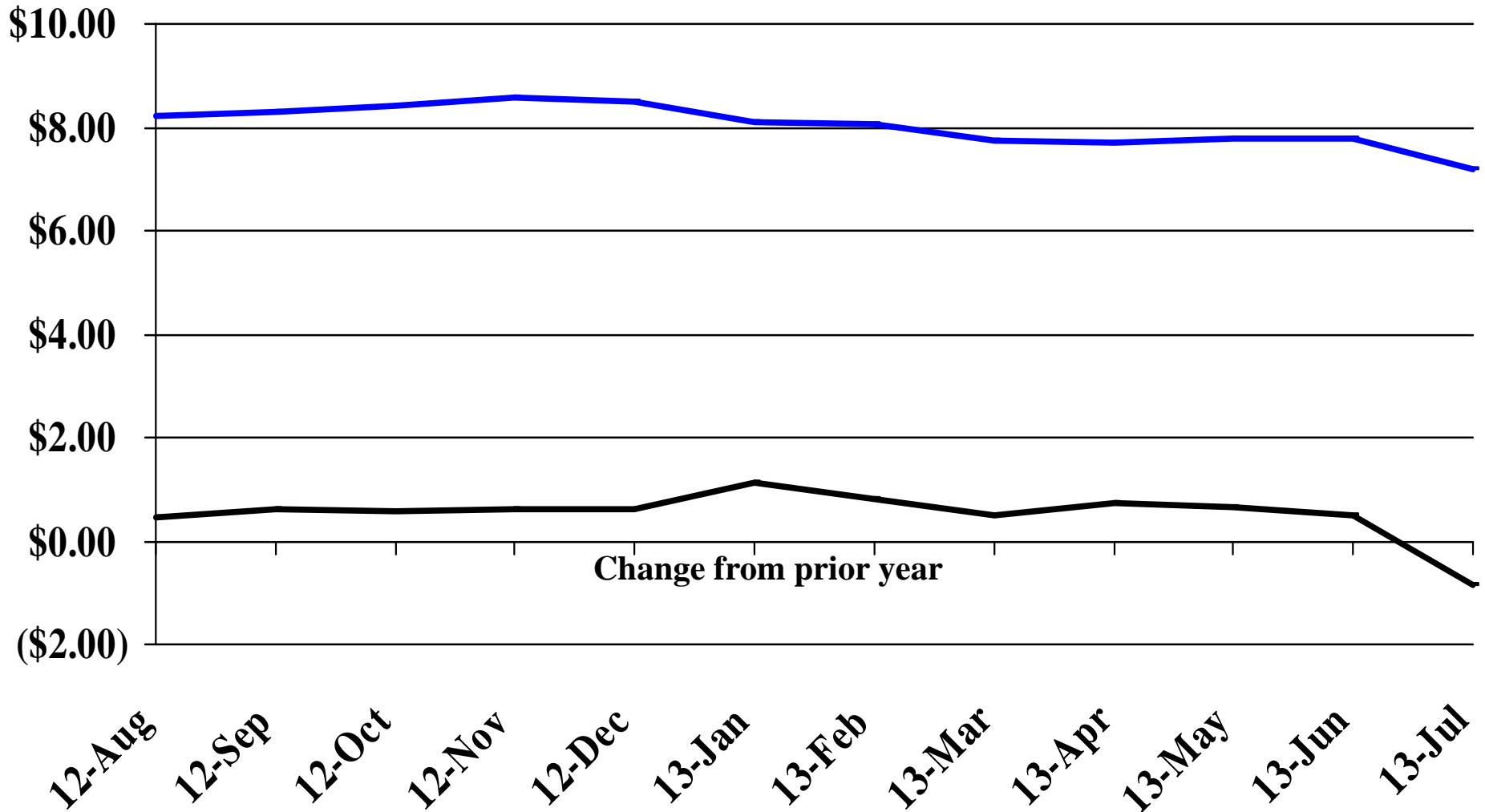


Recent Trends in the Number of New Non-Commercial Vehicles Titled



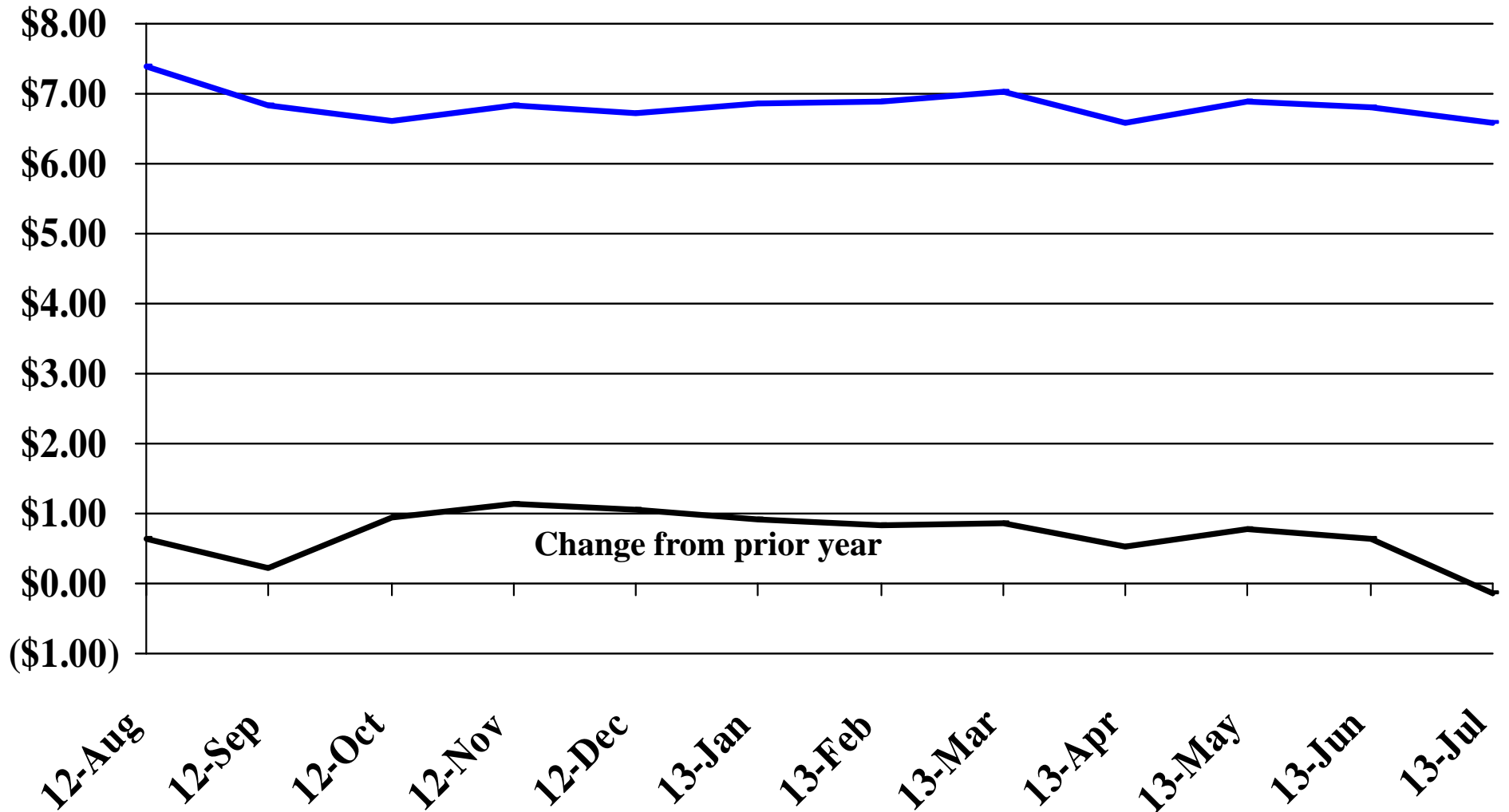
Recent Trends in the Price of Wheat

\$'s Per Bushel



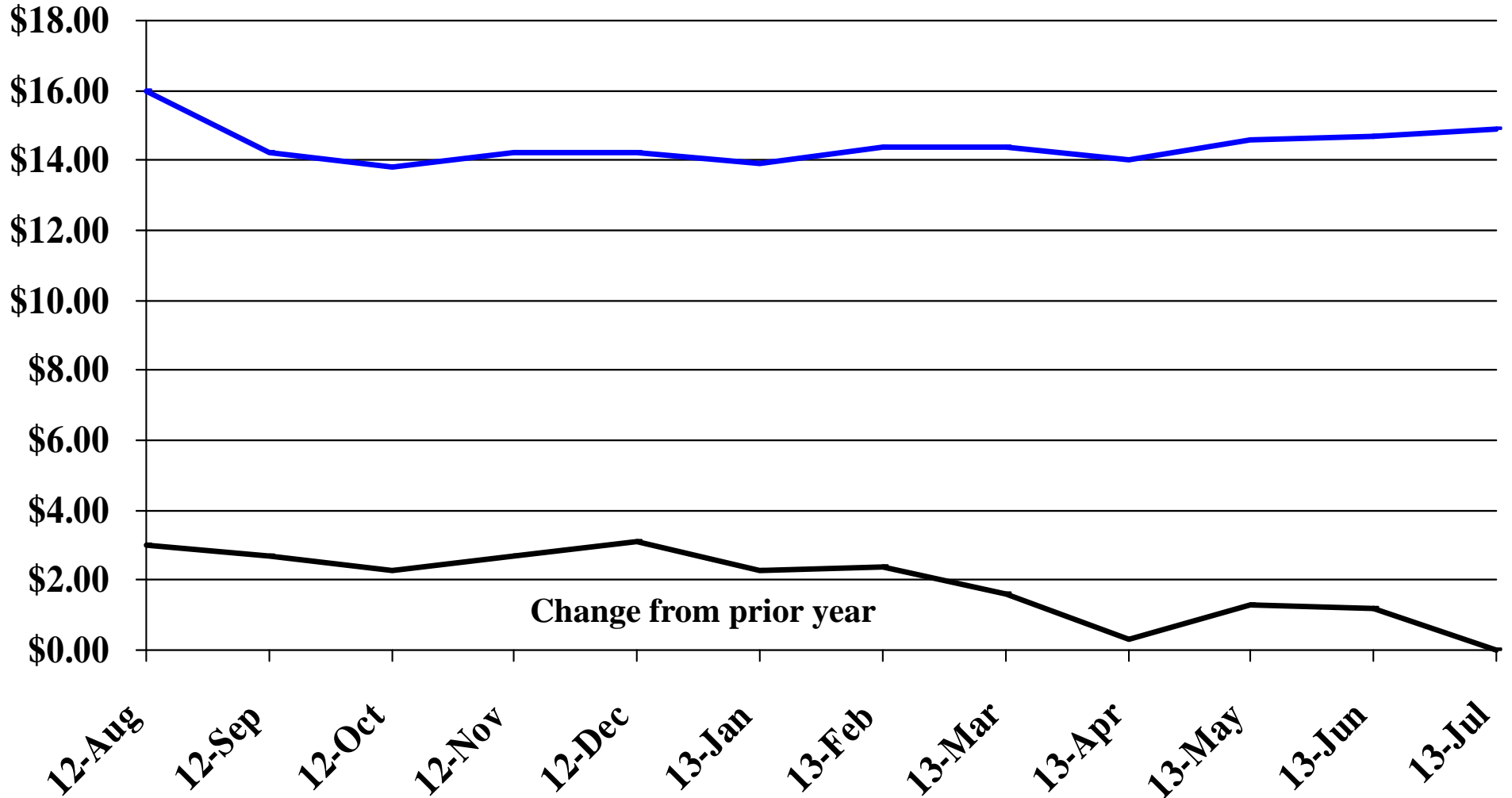
Recent Trends in the Price of Corn

\$'s Per Bushel



Recent Trends in the Price of Soybeans

\$'s Per Bushel



Recent Trends in the Price of Hay

\$'s Per Ton

