

The South Dakota Economy

December 5, 2013

Employment growth in South Dakota

- On an annual basis during 2012, South Dakota nonfarm employment levels were 6,500 jobs higher than 2011, or an increase of 1.6% after annual benchmark revisions. The growth in 2012 was the largest annual employment gain since 2007. In addition, South Dakota's total nonfarm employment in 2012 was higher than the peak employment level that was reached before the '07-'09 national recession, meaning South Dakota's employment transitioned from a recovery phase to an expansion phase during 2012.
- As of October 2013, South Dakota's total employment level was 2.0%, or 8,100 jobs, higher than the peak employment reached before the '07-'09 recession. In comparison, US employment was still 1.1%, or 1.5 million jobs, below the previous peak employment as of October 2013.
- In October 2013, total SD nonfarm employment was up 4,500 jobs or 1.1%, compared to October 2012.
 - Sectors that are currently experiencing year-over-year growth (October 2013 compared to October 2012 levels) include: leisure and hospitality (+2.7%); trade, transportation, and utilities (+1.6%); education and health services (+1.5%); financial activities (+0.7%); and, government (+1.0%). There was no change in manufacturing, professional and business services and other services sectors in October.
 - The logging, mining, and construction category was the only sector experiencing a year-over-year decline in October at -0.5%.

The unemployment rate continues to be one of the lowest in the nation.

- The unemployment rate in South Dakota was the second lowest in the nation in October at 3.7%.
 - SD's unemployment rate in October 2013 was the same as last month and 0.7% lower than last year.
- The U.S. unemployment rate was 7.3% in October 2013.

Income growth in South Dakota.

- In the second quarter of 2013, South Dakota's personal income grew 3.5% compared to the same quarter a year ago, which was higher than the US growth rate of 2.7% over the same time period. South Dakota's 3.5% growth rate was the fourth highest among all states.
- South Dakota's revised personal income for 2012 on an annual basis increased 2.4% compared to 2011. The lower growth rate in 2012 is attributable to a decline in farm income in 2012.
 - From 2010 to 2012, SD's personal income grew 14.1%, which was the 6th highest growth rate of all states over the same time period. The United States growth rate was 10.5% from 2010 to 2012.
- South Dakota's per capita personal income in 2012 was \$45,381, which ranked 17th in the nation, and was 3.8% higher than the US per capita personal income of \$43,735 during 2012.

The housing market.

- In the last twelve months (November 2012 – October 2013) there were 1,561 more total family housing units authorized by building permits in South Dakota than there were the same period before.*
- The value of total family housing building permits is \$163.76 million higher in the last twelve months compared to the same period the year before. *

The agricultural economy.

- Based on November 1st conditions, the SD corn crop is forecast at 812 million bushels, up 52% from last year and would be a record high according to the National Agriculture Statistics Service. Yield is forecast at 145 bushels per acre, up 44 bushels from 2012.
- Soybean production in SD is forecast at 182 million bushels, 26% higher than last year. If realized, the soybean production would also be the highest on record. Yield is forecast at 40 bushels per acre, up 9.5 bushels from 2012.
- The quarterly milk production in South Dakota for July-September totaled 510 million pounds, up 25 million pounds from the same quarter a year ago. The number of milk cows totaled 94,000 head, up 2,000 head from the July-September quarter from a year ago.
- As of November 1st, South Dakota's 1,000+ capacity feedlots reported 200,000 cattle on feed for the slaughter market. This was up 11% from last month but down 9% from a year ago.

* Building permit statistics are from monthly reporting places only.

Economic Indicators for the State of South Dakota for the latest 12 Month Period

| Category | Time Period | | | | | | | | | | | | 12 Month Avg/Total |
|---|-------------|--------|--------|--------|--------|---------|--------|--------|--------|--------|--------|--------|--------------------|
| | Nov-12 | Dec-12 | Jan-13 | Feb-13 | Mar-13 | Apr-13 | May-13 | Jun-13 | Jul-13 | Aug-13 | Sep-13 | Oct-13 | |
| Nonfarm Employment Data (information is seasonally adjusted by BLS and expressed in thousands) | | | | | | | | | | | | | |
| Total Nonfarm | 415.70 | 415.90 | 417.80 | 419.00 | 419.40 | 417.80 | 420.80 | 418.40 | 418.20 | 420.20 | 422.80 | 420.20 | 418.85 |
| change from prior year | 5.80 | 5.00 | 6.00 | 6.90 | 6.20 | 3.00 | 6.60 | 4.00 | 4.30 | 6.70 | 7.50 | 4.50 | 5.54 |
| % change from prior year | 1.41 | 1.22 | 1.46 | 1.67 | 1.50 | 0.72 | 1.59 | 0.97 | 1.04 | 1.62 | 1.81 | 1.08 | 1.34 |
| N.R., Mining & Const. | 20.30 | 20.40 | 20.30 | 20.50 | 20.40 | 19.50 | 20.30 | 19.90 | 19.40 | 20.50 | 20.60 | 20.20 | 20.19 |
| change from prior year | (0.90) | (1.10) | (1.50) | (1.40) | (1.60) | (2.30) | (1.00) | (1.20) | (1.40) | (0.10) | 0.10 | (0.10) | (1.04) |
| % change from prior year | (4.25) | (5.12) | (6.88) | (6.39) | (7.27) | (10.55) | (4.69) | (5.69) | (6.73) | (0.49) | 0.49 | (0.49) | (4.91) |
| Manufacturing Employment | 41.70 | 41.70 | 41.80 | 41.60 | 41.80 | 41.90 | 41.80 | 41.90 | 41.50 | 41.60 | 41.80 | 41.50 | 41.72 |
| change from prior year | 1.50 | 1.30 | 1.30 | 0.80 | 1.00 | 0.80 | 0.70 | 0.60 | 0.10 | 0.30 | 0.30 | - | 0.73 |
| % change from prior year | 3.73 | 3.22 | 3.21 | 1.96 | 2.45 | 1.95 | 1.70 | 1.45 | 0.24 | 0.73 | 0.72 | - | 1.77 |
| Trade, Transp., & Utilities | 83.00 | 82.60 | 84.00 | 84.10 | 84.50 | 84.50 | 86.50 | 85.20 | 86.00 | 85.50 | 85.60 | 84.60 | 84.68 |
| change from prior year | 0.80 | 0.30 | 1.40 | 1.40 | 1.70 | 1.50 | 3.40 | 2.00 | 3.00 | 2.10 | 2.20 | 1.30 | 1.76 |
| % change from prior year | 0.97 | 0.36 | 1.69 | 1.69 | 2.05 | 1.81 | 4.09 | 2.40 | 3.61 | 2.52 | 2.64 | 1.56 | 2.12 |
| Financial Activities | 29.20 | 29.20 | 29.40 | 29.80 | 29.70 | 29.60 | 29.20 | 29.60 | 29.70 | 29.60 | 29.60 | 29.40 | 29.50 |
| change from prior year | 1.20 | 1.20 | 1.30 | 1.70 | 1.60 | 1.20 | 0.50 | 0.90 | 0.90 | 0.70 | 0.60 | 0.20 | 1.00 |
| % change from prior year | 4.29 | 4.29 | 4.63 | 6.05 | 5.69 | 4.23 | 1.74 | 3.14 | 3.13 | 2.42 | 2.07 | 0.68 | 3.51 |
| Prof. and Business Services | 29.00 | 29.30 | 28.50 | 28.30 | 28.00 | 28.30 | 28.20 | 28.00 | 28.30 | 28.10 | 28.60 | 29.10 | 28.48 |
| change from prior year | (0.10) | 0.20 | (0.50) | (0.70) | (1.20) | (0.90) | (0.80) | (1.10) | (0.80) | (1.10) | (0.70) | 0.00 | (0.64) |
| % change from prior year | (0.34) | 0.69 | (1.72) | (2.41) | (4.11) | (3.08) | (2.76) | (3.78) | (2.75) | (3.77) | (2.39) | 0.00 | (2.20) |
| Educ. & Health Services | 67.80 | 68.10 | 68.30 | 68.40 | 68.80 | 68.60 | 68.70 | 68.70 | 68.40 | 68.50 | 68.40 | 68.70 | 68.45 |
| change from prior year | 2.00 | 2.30 | 2.30 | 2.40 | 2.60 | 1.30 | 1.50 | 1.10 | 0.90 | 1.20 | 0.90 | 1.00 | 1.63 |
| % change from prior year | 3.04 | 3.50 | 3.48 | 3.64 | 3.93 | 1.93 | 2.23 | 1.63 | 1.33 | 1.78 | 1.33 | 1.48 | 2.43 |
| Leisure & Hospitality | 45.00 | 45.20 | 45.70 | 46.20 | 46.30 | 46.10 | 46.70 | 46.00 | 45.90 | 45.80 | 46.80 | 46.10 | 45.98 |
| change from prior year | 1.20 | 1.30 | 1.50 | 2.00 | 1.90 | 1.70 | 2.30 | 1.60 | 1.70 | 1.70 | 2.60 | 1.20 | 1.73 |
| % change from prior year | 2.74 | 2.96 | 3.39 | 4.52 | 4.28 | 3.83 | 5.18 | 3.60 | 3.85 | 3.85 | 5.88 | 2.67 | 3.90 |
| Other Services | 15.80 | 15.70 | 15.70 | 15.90 | 16.00 | 16.00 | 15.50 | 15.70 | 15.60 | 15.60 | 15.90 | 15.80 | 15.77 |
| change from prior year | 0.10 | 0.00 | (0.10) | 0.10 | 0.20 | 0.20 | (0.30) | (0.10) | (0.30) | (0.30) | 0.10 | 0.00 | (0.03) |
| % change from prior year | 0.64 | 0.00 | (0.63) | 0.63 | 1.27 | 1.27 | (1.90) | (0.63) | (1.89) | (1.89) | 0.63 | 0.00 | (0.21) |
| Government | 77.90 | 77.80 | 78.00 | 78.20 | 77.90 | 77.20 | 77.70 | 77.40 | 77.30 | 78.90 | 79.50 | 78.70 | 78.04 |
| change from prior year | 0.30 | (0.10) | 0.40 | 0.90 | 0.30 | (0.30) | 0.40 | 0.40 | 0.30 | 2.20 | 1.50 | 0.80 | 0.59 |
| % change from prior year | 0.39 | (0.13) | 0.52 | 1.16 | 0.39 | (0.39) | 0.52 | 0.52 | 0.39 | 2.87 | 1.92 | 1.03 | 0.76 |
| NonFarm (excluding Govt.) | 337.8 | 338.1 | 339.8 | 340.8 | 341.5 | 340.6 | 343.1 | 341.0 | 340.9 | 341.3 | 343.3 | 341.5 | 340.81 |
| change from prior year | 5.5 | 5.1 | 5.6 | 6.0 | 5.9 | 3.3 | 6.2 | 3.6 | 4.0 | 4.5 | 6.0 | 3.7 | 4.95 |
| % change from prior year | 1.66 | 1.53 | 1.68 | 1.79 | 1.76 | 0.98 | 1.84 | 1.07 | 1.19 | 1.34 | 1.78 | 1.10 | 1.47 |

Economic Indicators for the State of South Dakota for the latest 12 Month Period

| Category | Time Period | | | | | | | | | | | | 12 Month Avg/Total |
|---|-------------|--------|--------|--------|--------|--------|--------|---------|--------|--------|--------|--------|--------------------|
| | Nov-12 | Dec-12 | Jan-13 | Feb-13 | Mar-13 | Apr-13 | May-13 | Jun-13 | Jul-13 | Aug-13 | Sep-13 | Oct-13 | |
| Number of Housing Units Authorized by Building Permits (information is not seasonally adjusted): | | | | | | | | | | | | | |
| One-Family Units - S.D. Total | 171 | 118 | 85 | 112 | 234 | 435 | 230 | 224 | 246 | 204 | 264 | 217 | 2,540 |
| change from prior year | 104 | 58 | 18 | 32 | 56 | 227 | (2) | (2) | 33 | (17) | 9 | (64) | 452 |
| Total Family Units - S.D. Total | 341 | 166 | 285 | 133 | 566 | 628 | 324 | 369 | 339 | 570 | 625 | 285 | 4,631 |
| change from prior year | 253 | 89 | 154 | 41 | 349 | 365 | 67 | (74) | (16) | 305 | 93 | (65) | 1561 |
| Total Family Units - Minnehaha Co. | 128 | 46 | 170 | 48 | 316 | 470 | 94 | 122 | 94 | 368 | 180 | 126 | 2,162 |
| change from prior year | 107 | 18 | 151 | 5 | 231 | 386 | (15) | (156) | (27) | 254 | (88) | 3 | 869 |
| Total Family Units - Pennington Co. | 28 | 50 | 19 | 25 | 88 | 51 | 38 | 43 | 56 | 24 | 187 | 31 | 640 |
| change from prior year | 17 | 25 | (2) | 4 | 65 | 3 | 12 | (5) | 22 | (14) | 156 | (53) | 230 |
| Value of Building Permits Issued (information is not seasonally adjusted and is expressed in millions of dollars): | | | | | | | | | | | | | |
| One-Family units - S.D. Total | 31.12 | 16.25 | 15.72 | 17.93 | 23.07 | 69.60 | 39.86 | 41.32 | 41.57 | 37.07 | 46.43 | 37.78 | 417.71 |
| change from prior year | 19.90 | 6.31 | 3.83 | 4.16 | (6.13) | 35.40 | 1.76 | 4.28 | 5.67 | (3.10) | 5.74 | (6.09) | 71.73 |
| Total Family units - S.D. Total | 43.49 | 19.79 | 32.57 | 20.12 | 51.22 | 85.56 | 46.34 | 51.65 | 46.81 | 66.23 | 76.64 | 43.31 | 583.74 |
| change from prior year | 30.65 | 7.87 | 16.89 | 5.68 | 19.53 | 48.02 | 6.74 | (1.09) | 0.26 | 21.64 | 14.89 | (7.31) | 163.76 |
| Total Family Units - Minnehaha Co. | 17.80 | 6.50 | 9.94 | 6.81 | 18.86 | 60.36 | 13.35 | 16.64 | 16.77 | 38.75 | 24.47 | 18.39 | 248.65 |
| change from prior year | 14.09 | 1.77 | 6.61 | 0.88 | 5.39 | 47.72 | (3.33) | (12.14) | (0.33) | 22.66 | (5.35) | (0.85) | 77.13 |
| Total Family Units - Pennington Co. | 5.92 | 5.19 | 3.41 | 4.67 | 15.02 | 7.70 | 6.52 | 7.69 | 5.45 | 4.72 | 18.49 | 5.30 | 90.08 |
| change from prior year | 4.16 | 1.45 | (0.21) | 1.09 | 11.20 | 0.75 | 1.46 | 0.02 | (0.98) | (0.95) | 12.28 | (3.47) | 26.80 |

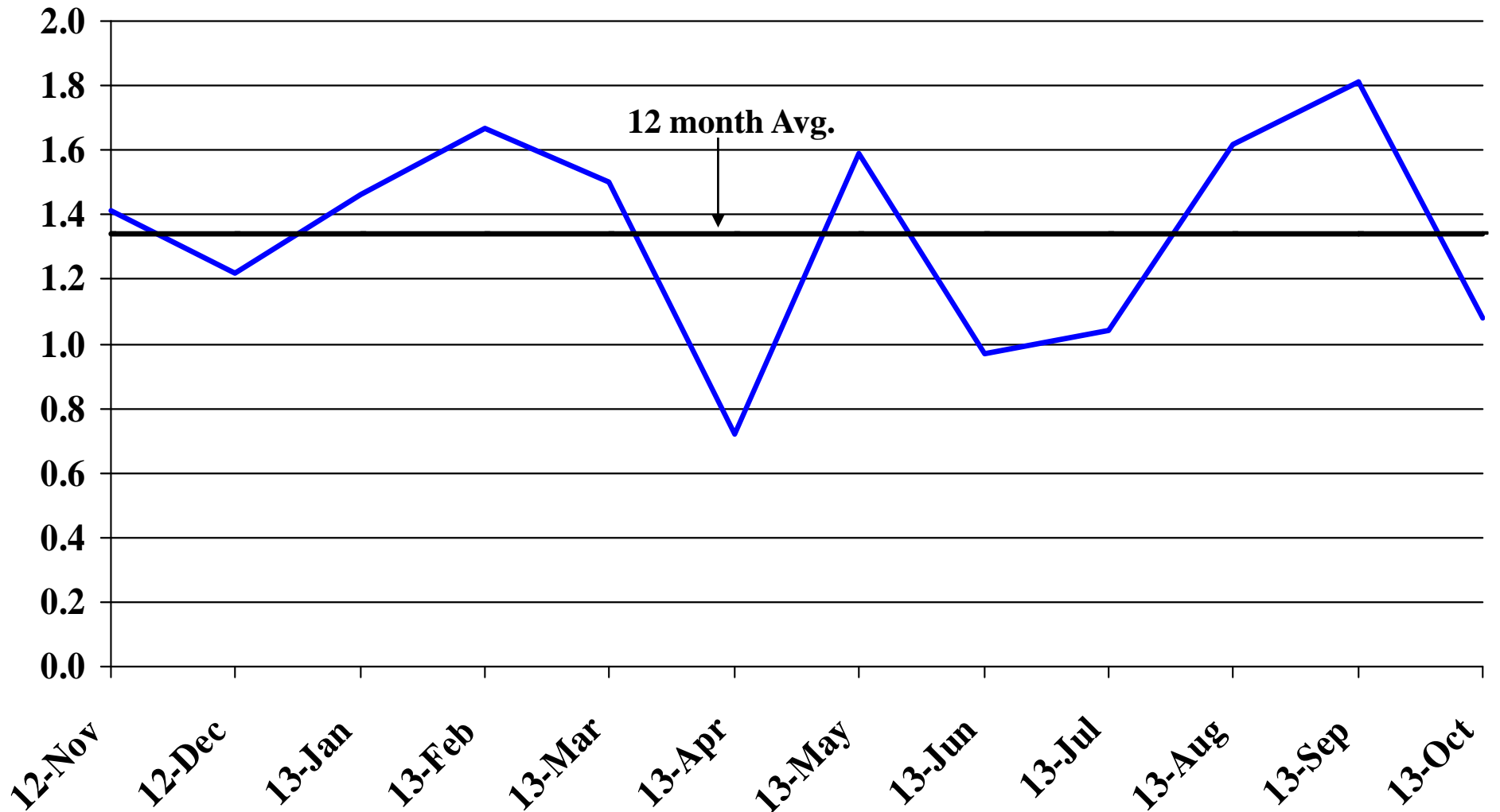
| Automobile Data (information is not seasonally adjusted) | | | | | | | | | | | | | |
|---|-------|-------|-------|-------|-------|-------|-------|-------|-------|-------|-------|-------|--------|
| New Non-Comm. Veh. Titled | 3,164 | 3,136 | 3,863 | 3,293 | 2,851 | 3,674 | 3,762 | 3,396 | 3,767 | 3,581 | 3,740 | 4,047 | 42,274 |
| change from prior year | 486 | (73) | 140 | 869 | (74) | 247 | 181 | (76) | (111) | 223 | 685 | 654 | 3,151 |

| Agriculture (information is not seasonally adjusted) | | | | | | | | | | | | | |
|---|--------|--------|--------|--------|--------|--------|--------|--------|--------|---------|---------|---------|--------|
| Wheat | 8.56 | 8.48 | 8.10 | 8.05 | 7.75 | 7.69 | 7.79 | 7.77 | 7.18 | 6.83 | 6.60 | 6.69 | 7.62 |
| change from prior year | 0.62 | 0.63 | 1.11 | 0.80 | 0.51 | 0.73 | 0.67 | 0.48 | (0.85) | (1.40) | (1.71) | (1.72) | (0.01) |
| Corn | 6.82 | 6.71 | 6.85 | 6.88 | 7.04 | 6.59 | 6.88 | 6.80 | 6.58 | 5.99 | 5.46 | 4.22 | 6.40 |
| change from prior year | 1.14 | 1.06 | 0.92 | 0.82 | 0.87 | 0.52 | 0.78 | 0.65 | (0.15) | (1.40) | (1.37) | (2.39) | 0.12 |
| Soybeans | 14.20 | 14.20 | 13.90 | 14.40 | 14.40 | 14.00 | 14.60 | 14.70 | 14.90 | 13.80 | 12.80 | 12.30 | 14.02 |
| change from prior year | 2.70 | 3.10 | 2.30 | 2.40 | 1.60 | 0.30 | 1.30 | 1.20 | - | (2.20) | (1.40) | (1.50) | 0.82 |
| Hay | 209.00 | 213.00 | 211.00 | 216.00 | 221.00 | 223.00 | 239.00 | 221.00 | 178.00 | 159.00 | 128.00 | 159.00 | 198.08 |
| change from prior year | 84.00 | 77.00 | 89.00 | 93.00 | 99.00 | 96.00 | 116.00 | 79.00 | 7.00 | (45.00) | (78.00) | (62.00) | 46.25 |

* Housing permit statistics are from monthly reporting places only.

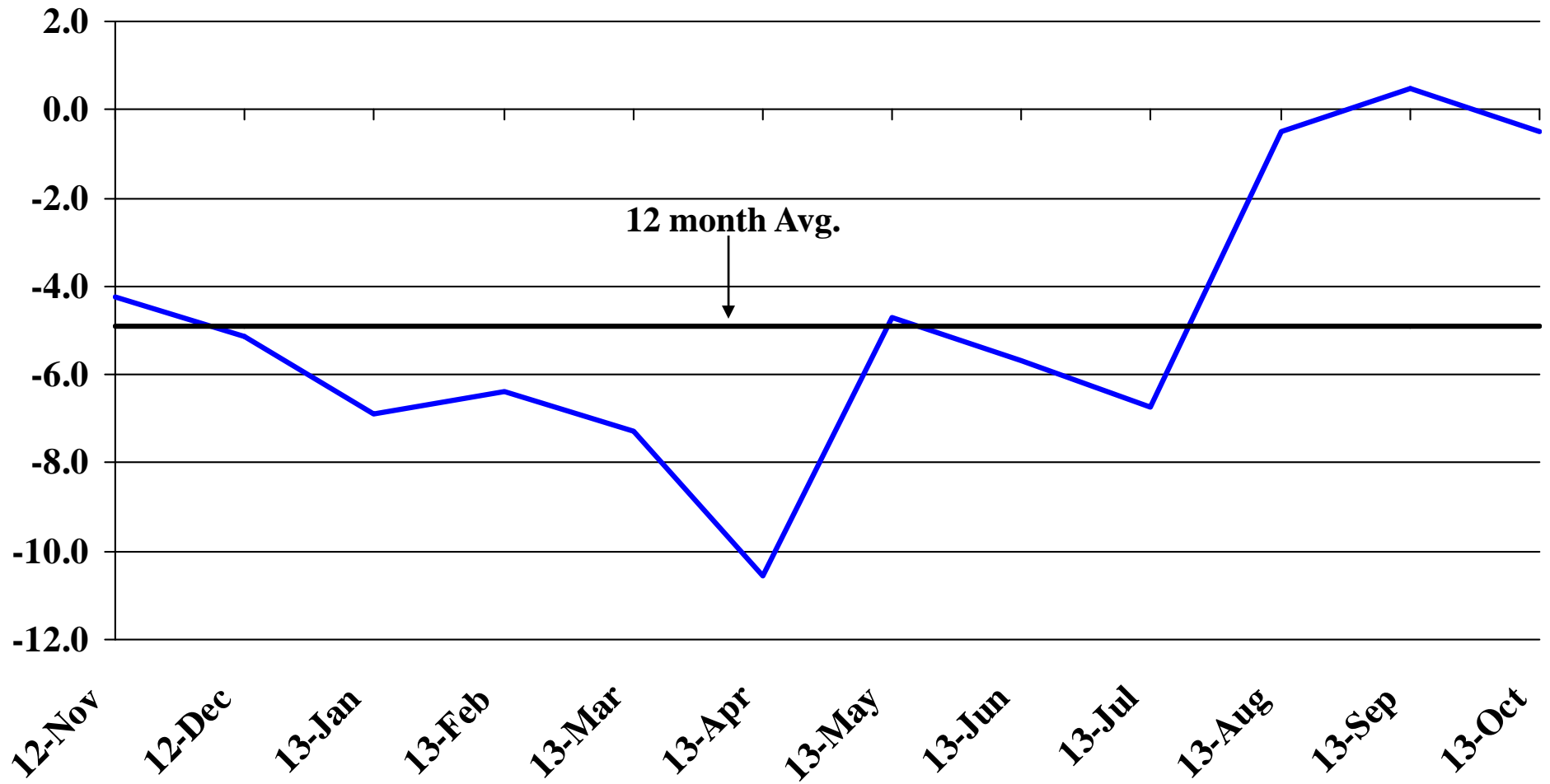
Recent Trends in Nonfarm Employment

Percent Change



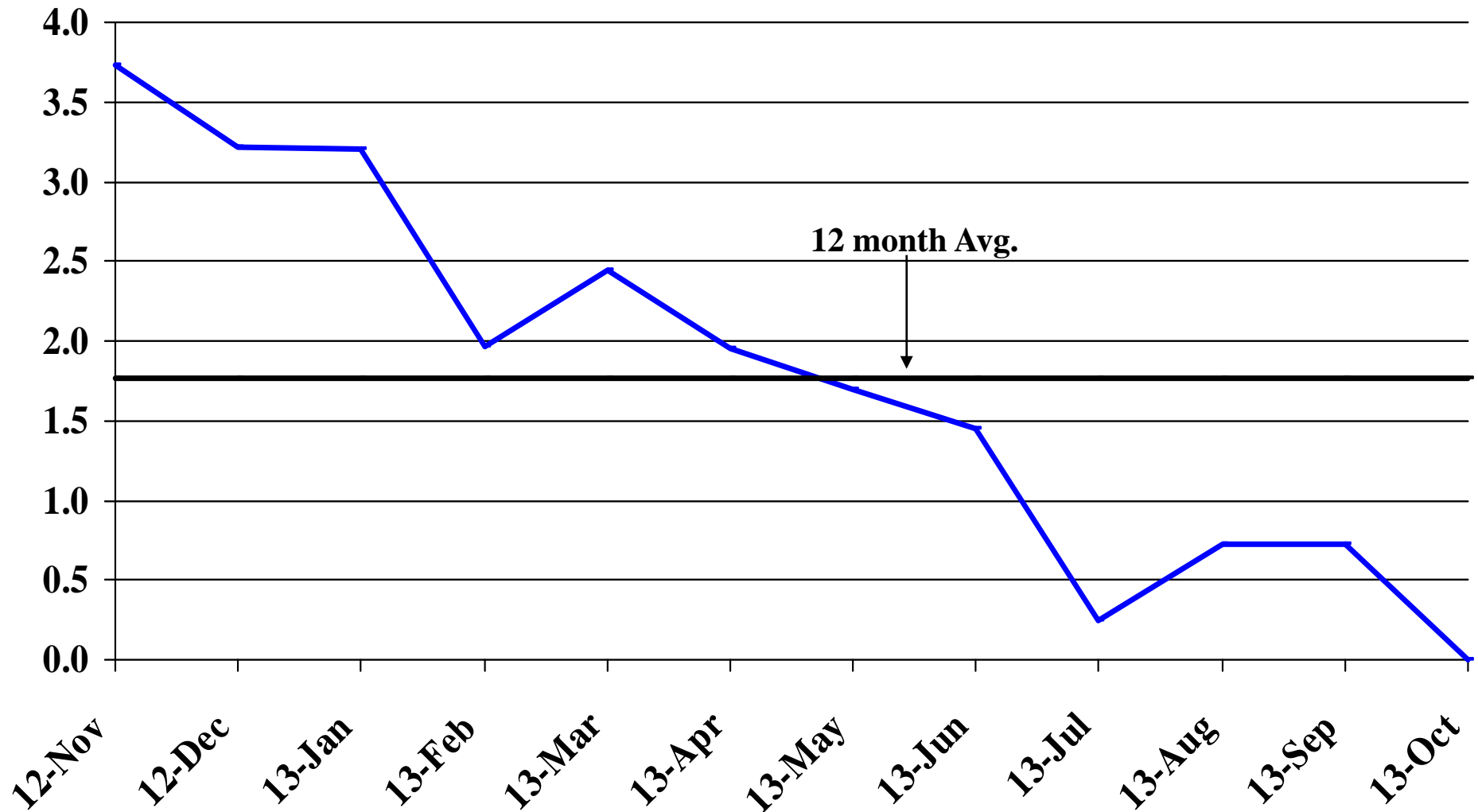
Recent Trends in Natural Resources, Mining and Construction Employment

Percent Change



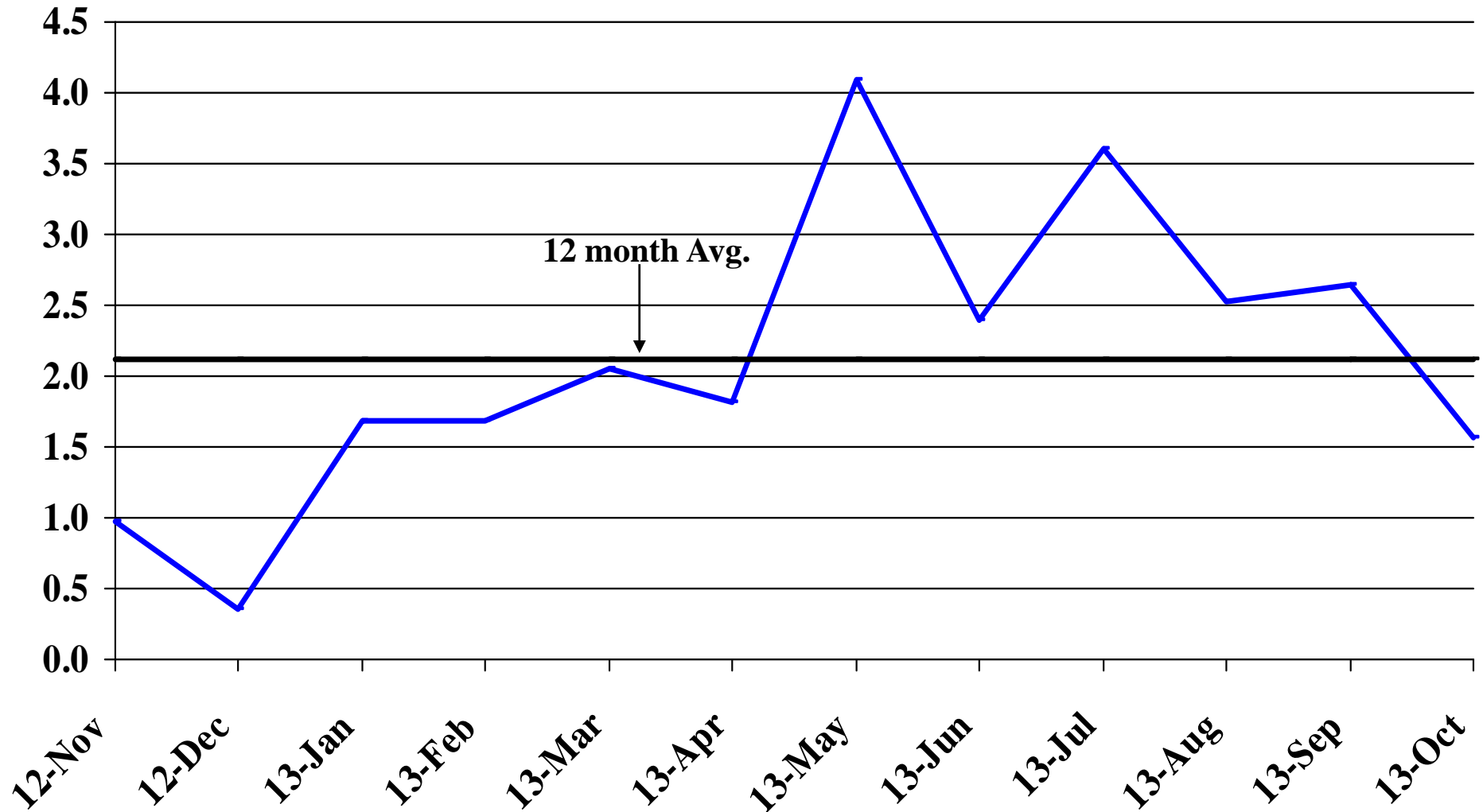
Recent Trends in Manufacturing Employment

Percent Change



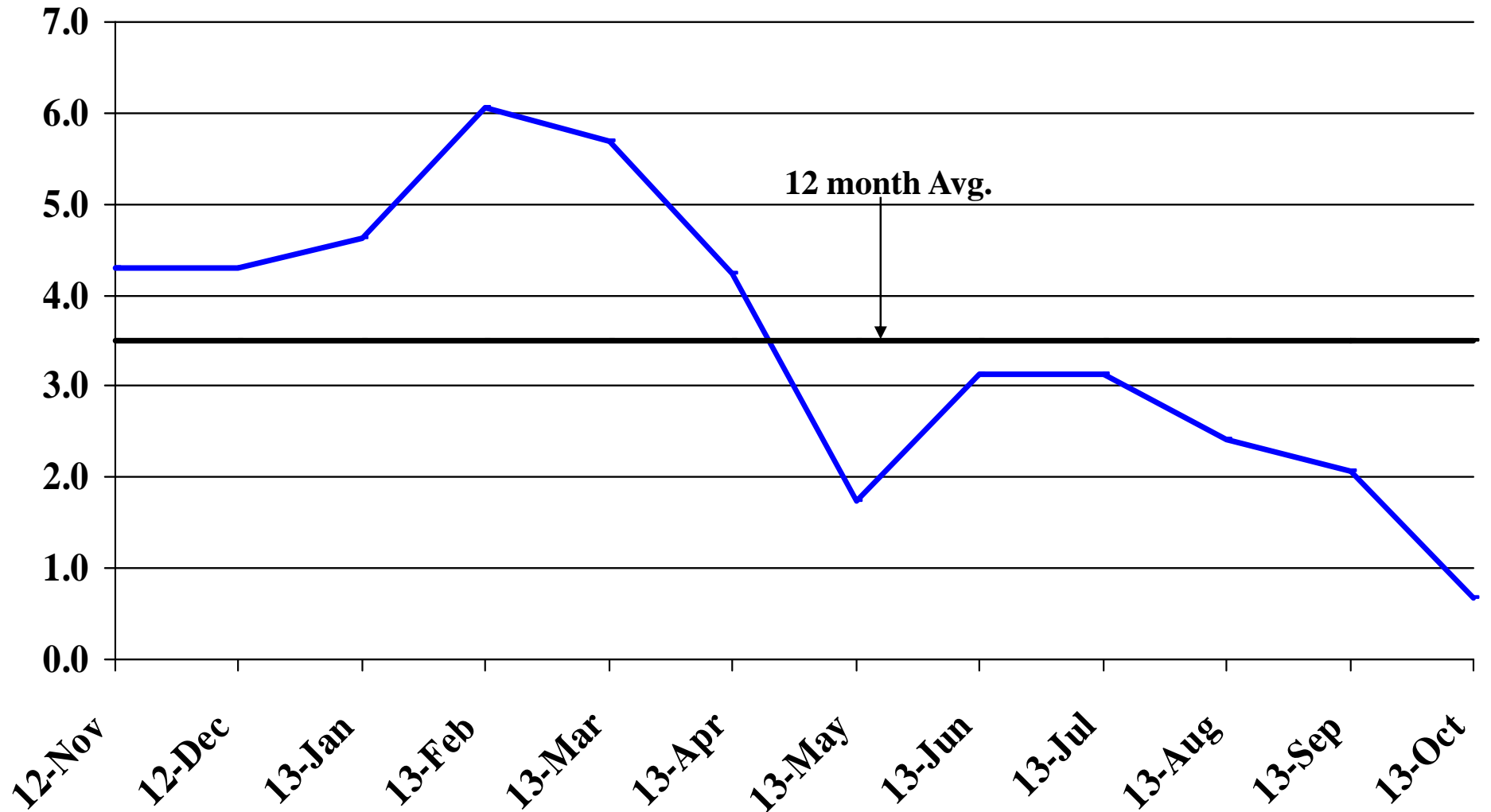
Recent Trends in Trade, Transportation, and Utilities Employment

Percent Change



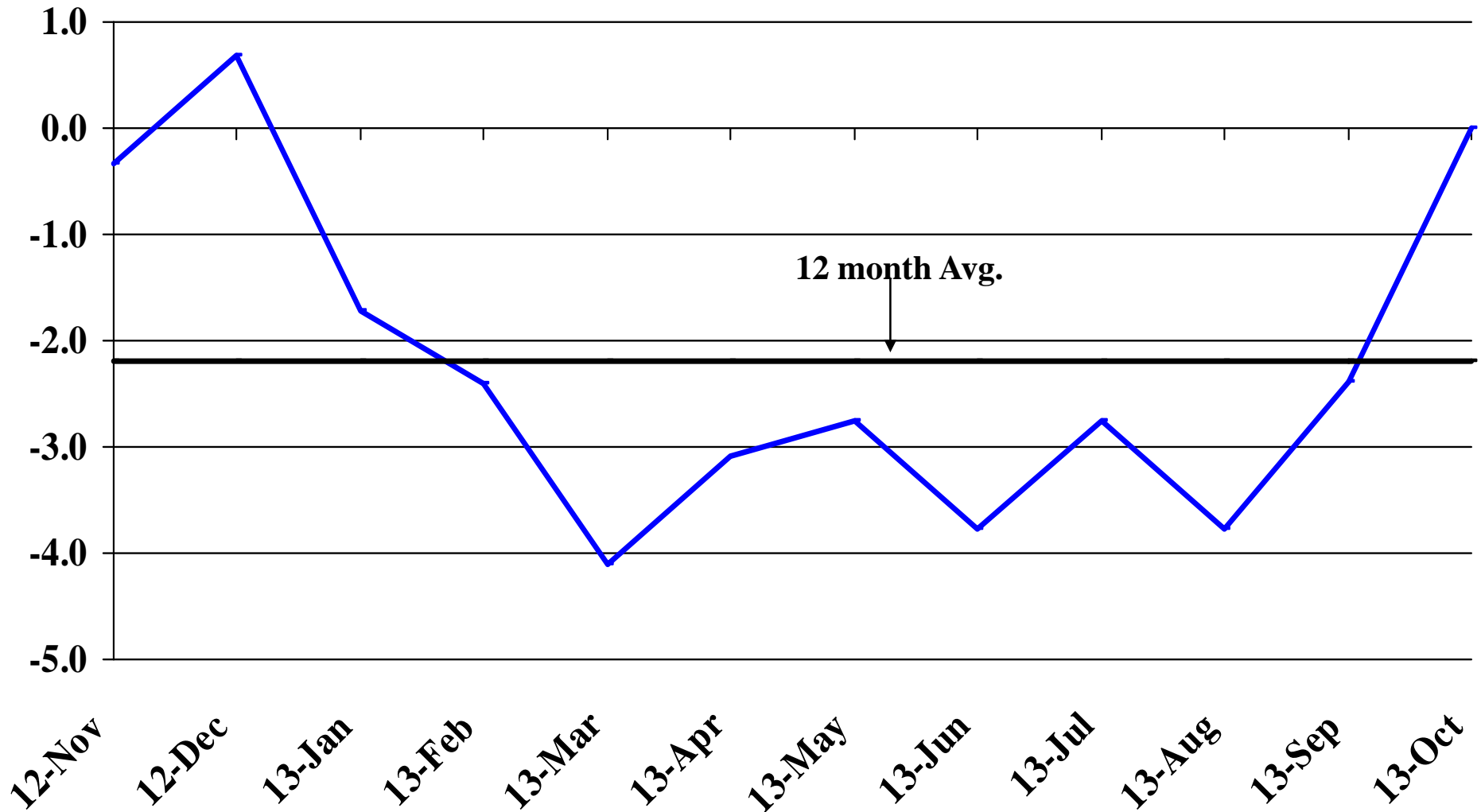
Recent Trends in Financial Activities Employment

Percent Change



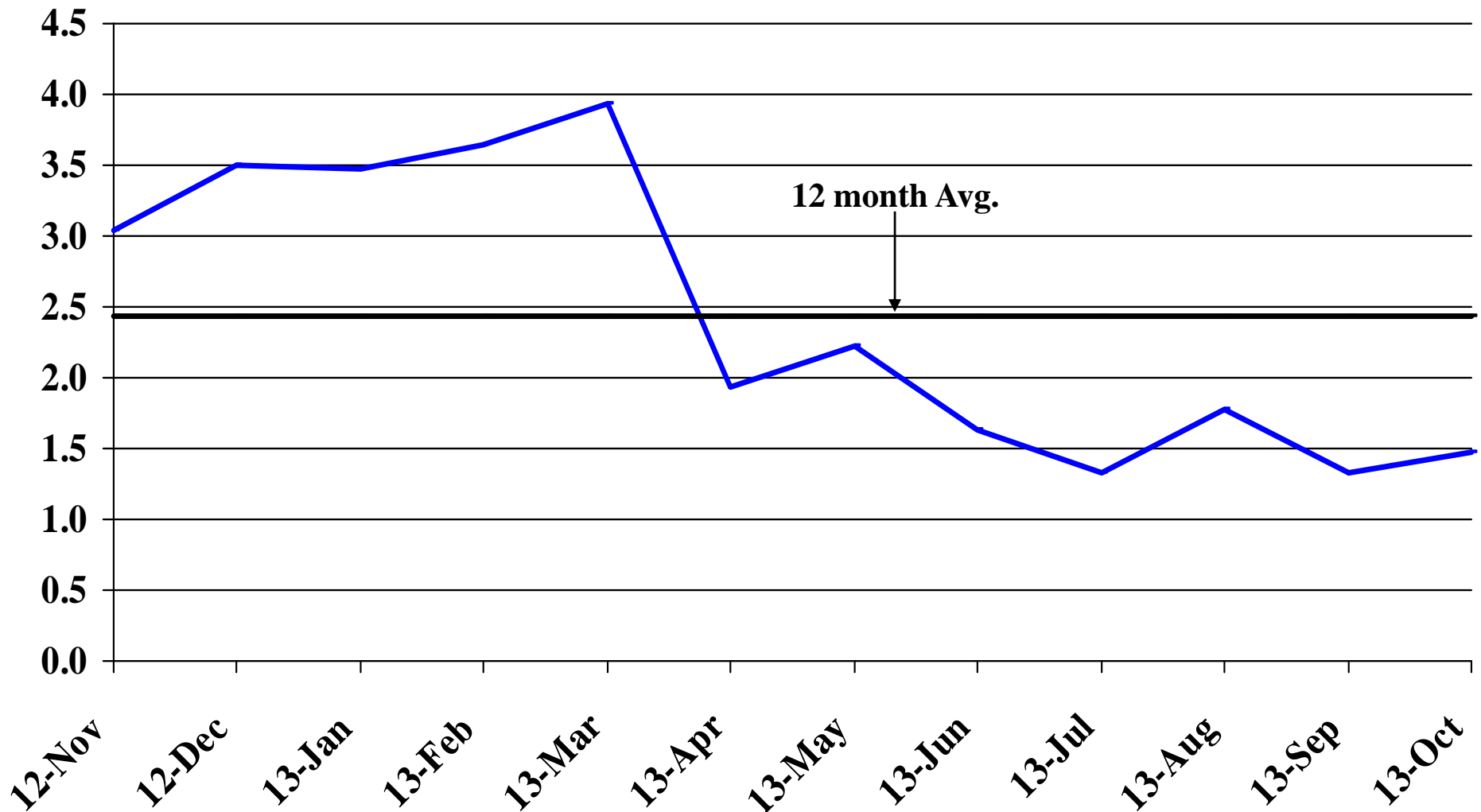
Recent Trends in Professional and Business Services Employment

Percent Change



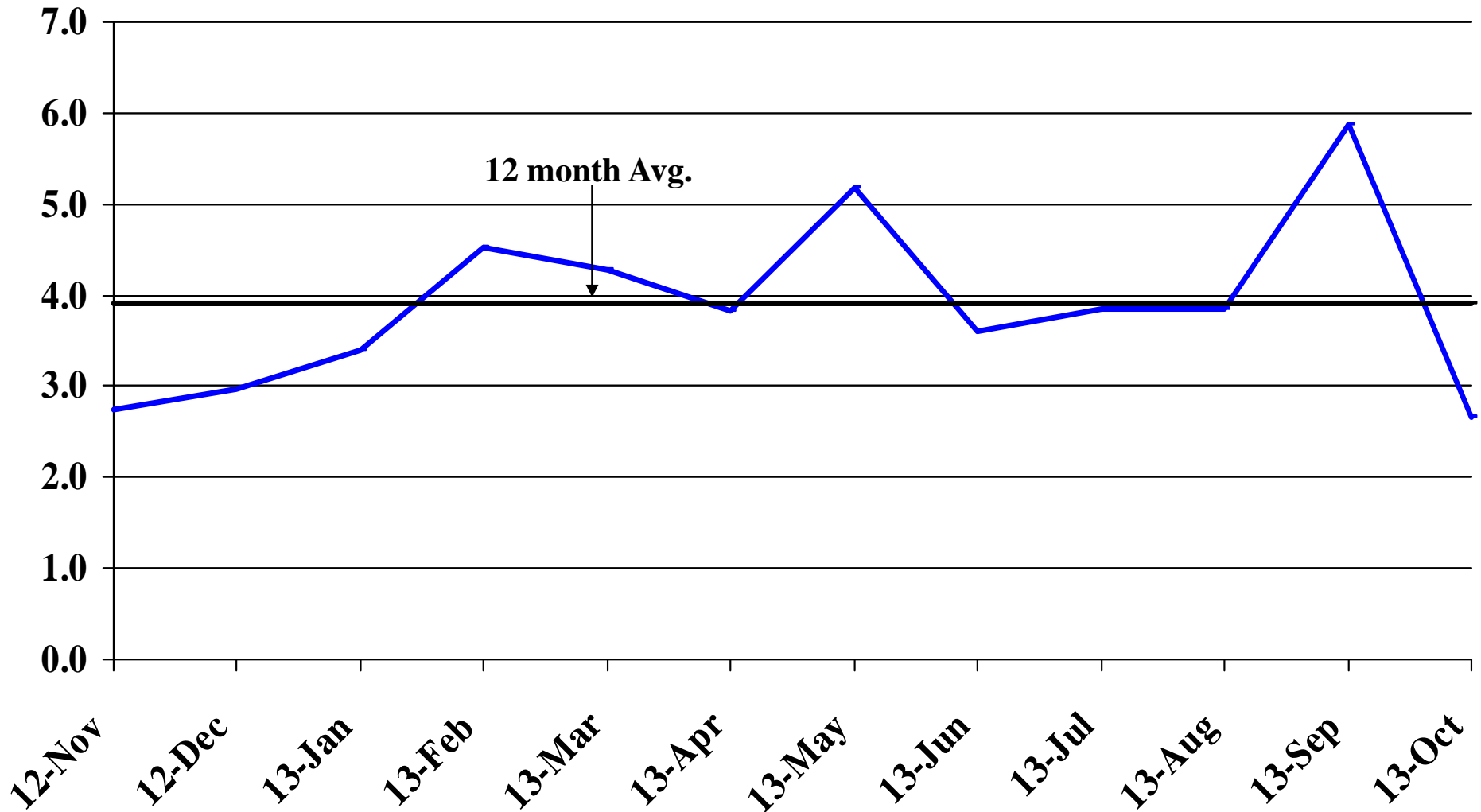
Recent Trends in Educational and Health Services Employment

Percent Change



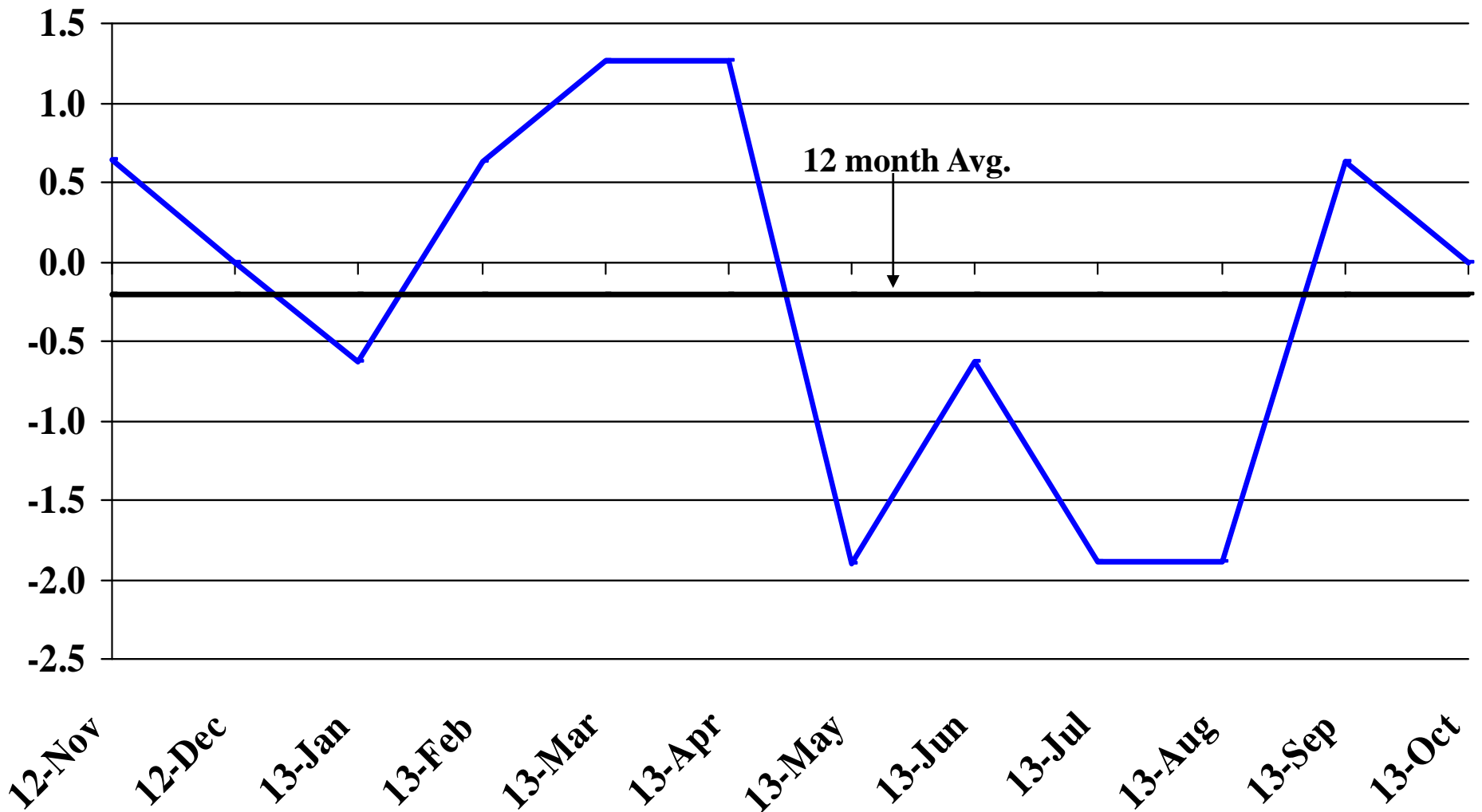
Recent Trends in Leisure and Hospitality Employment

Percent Change



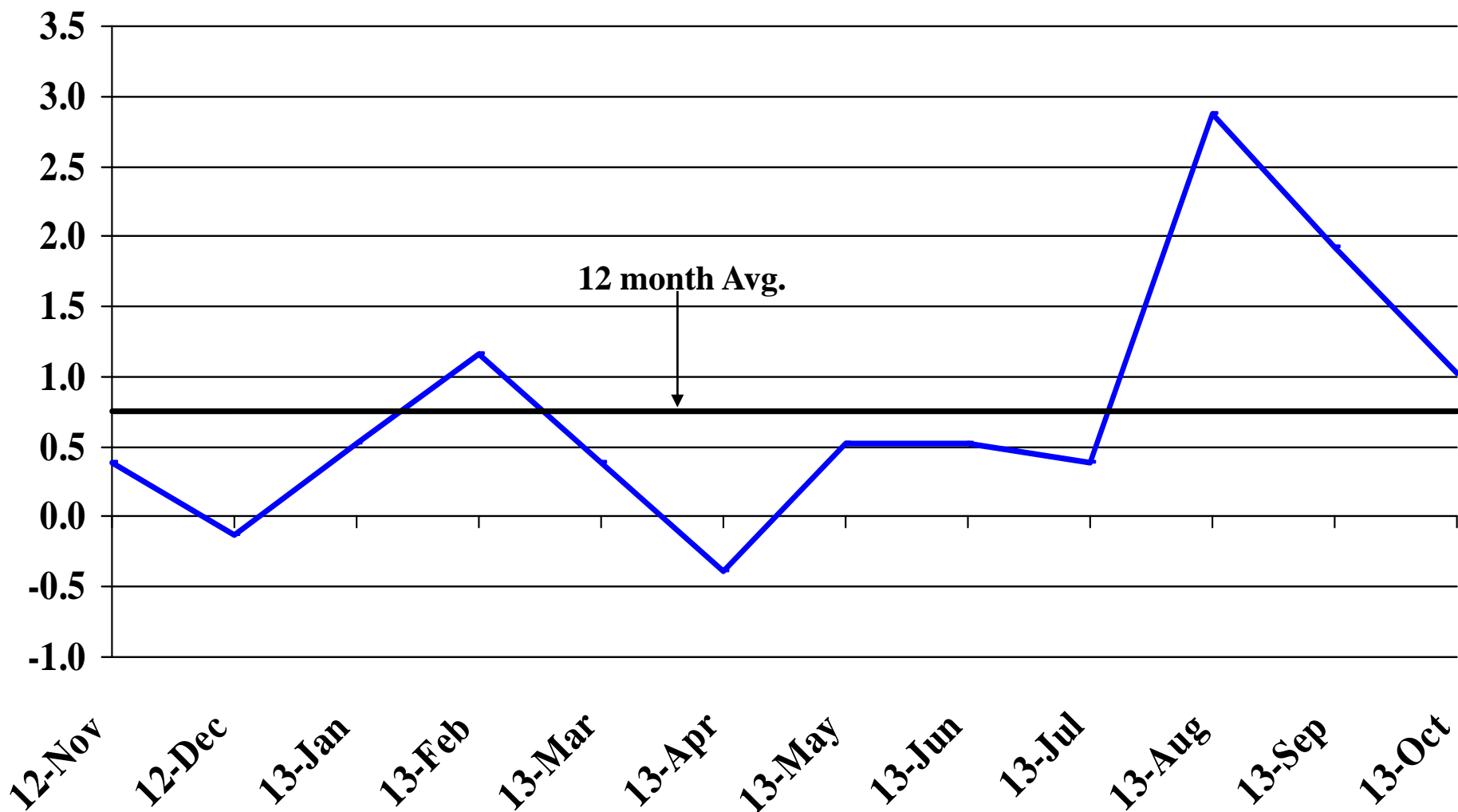
Recent Trends in Other Services Employment

Percent Change



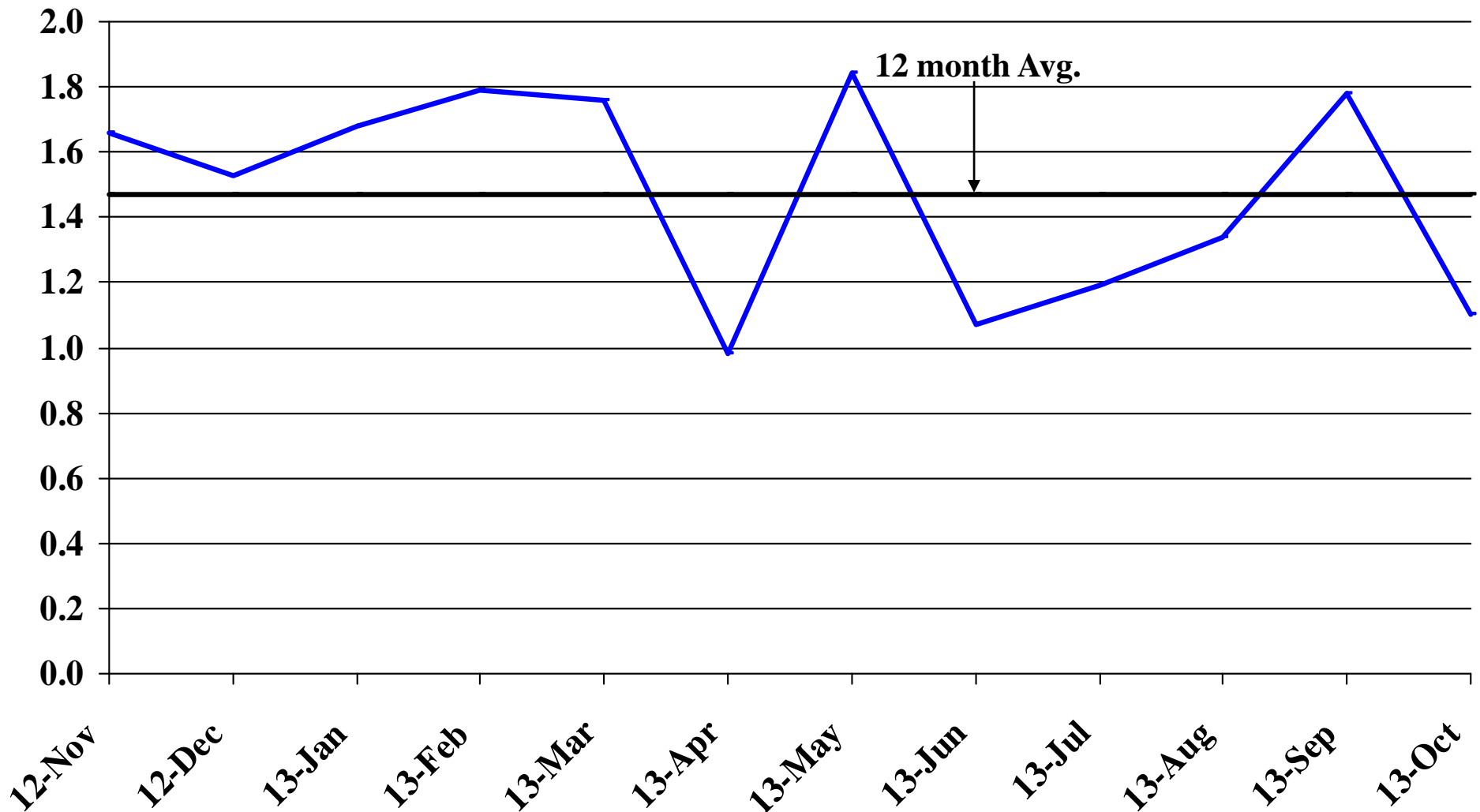
Recent Trends in Government Employment

Percent Change

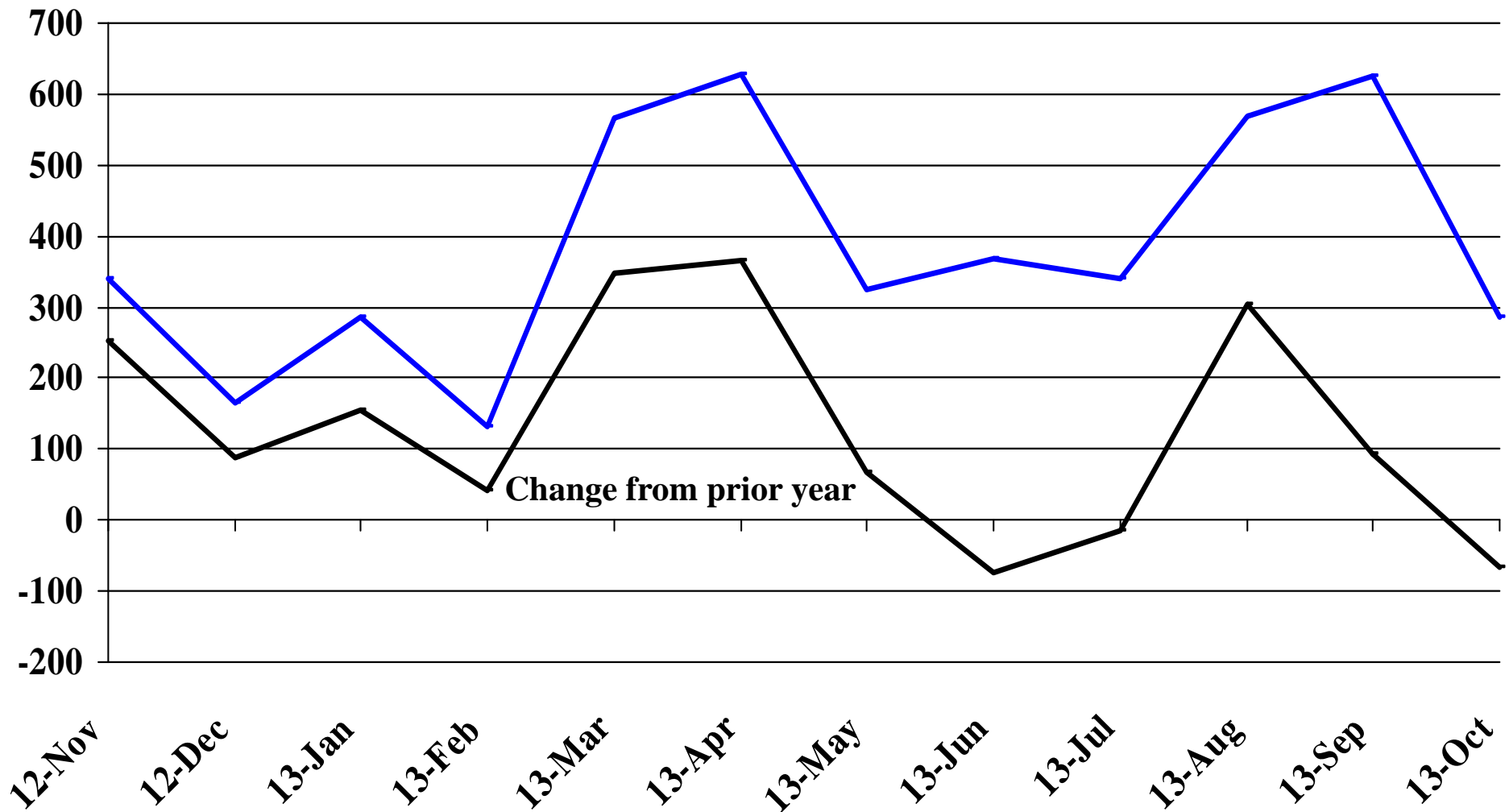


Recent Trends in Nonfarm Employment (excluding Government Employment)

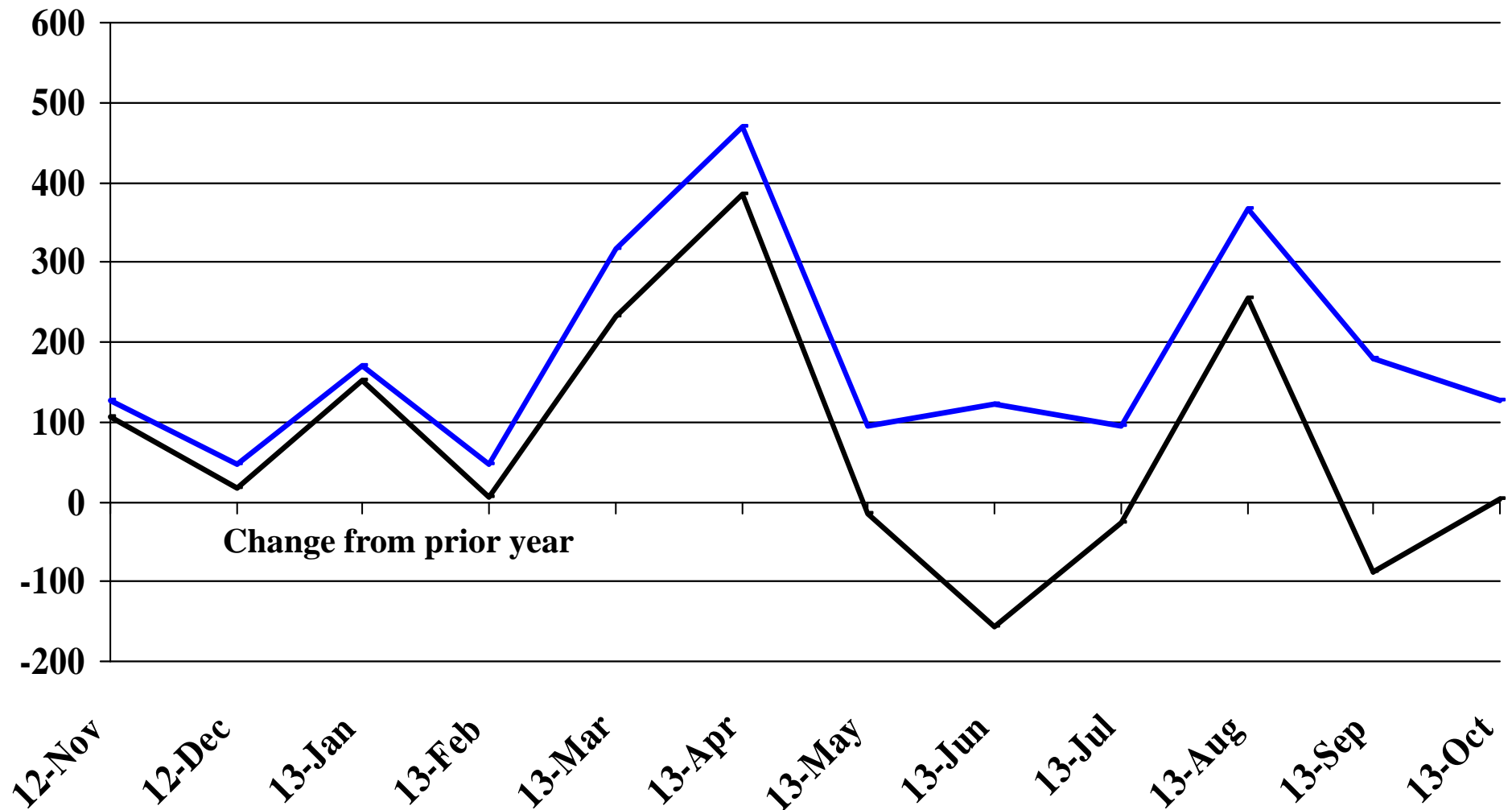
Percent Change



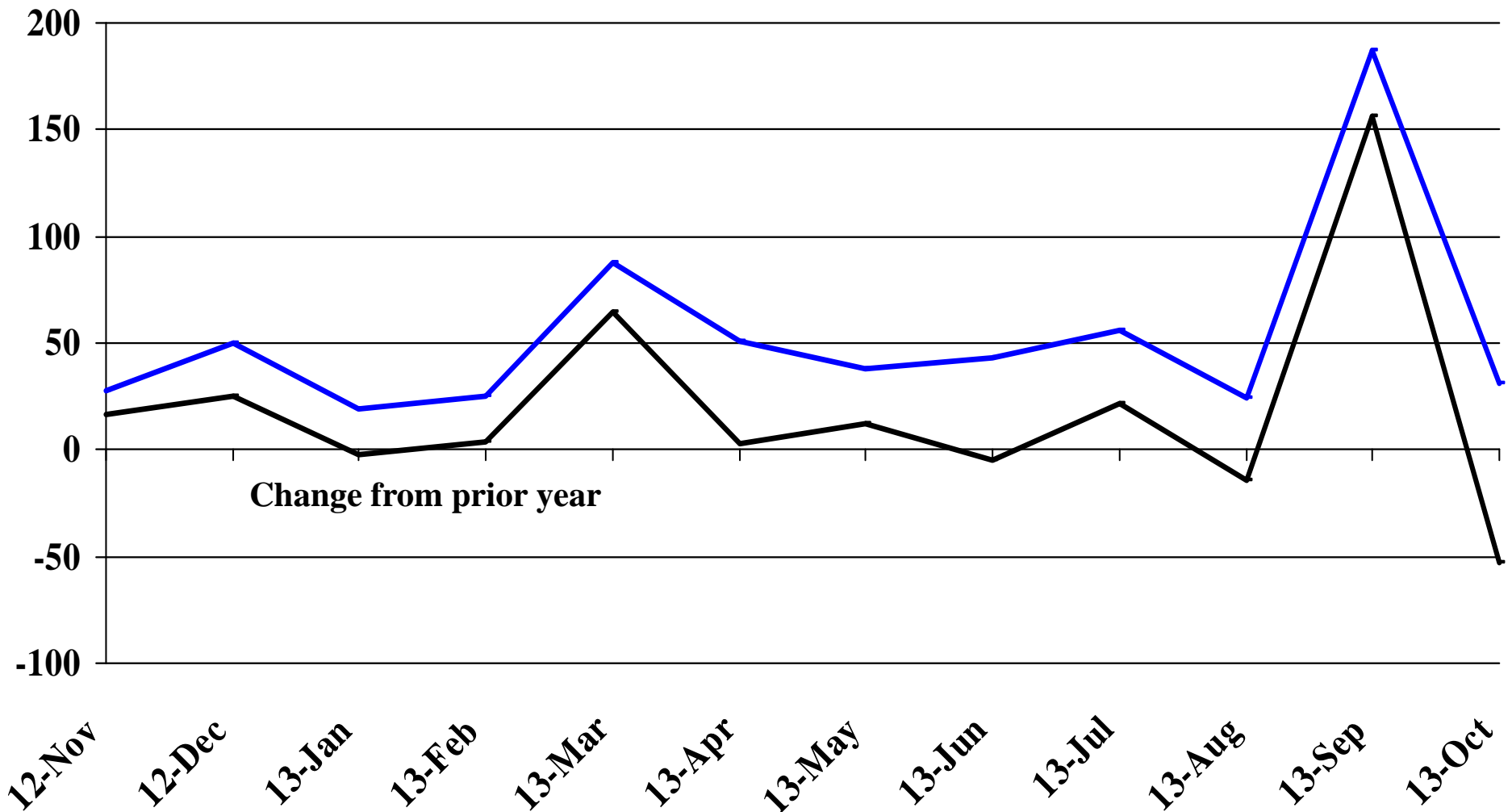
Recent Trends in the Number of Units Authorized by Residential Building Permits for South Dakota



Recent Trends in the Number of Residential Units Authorized by Building Permits for Minnehaha County

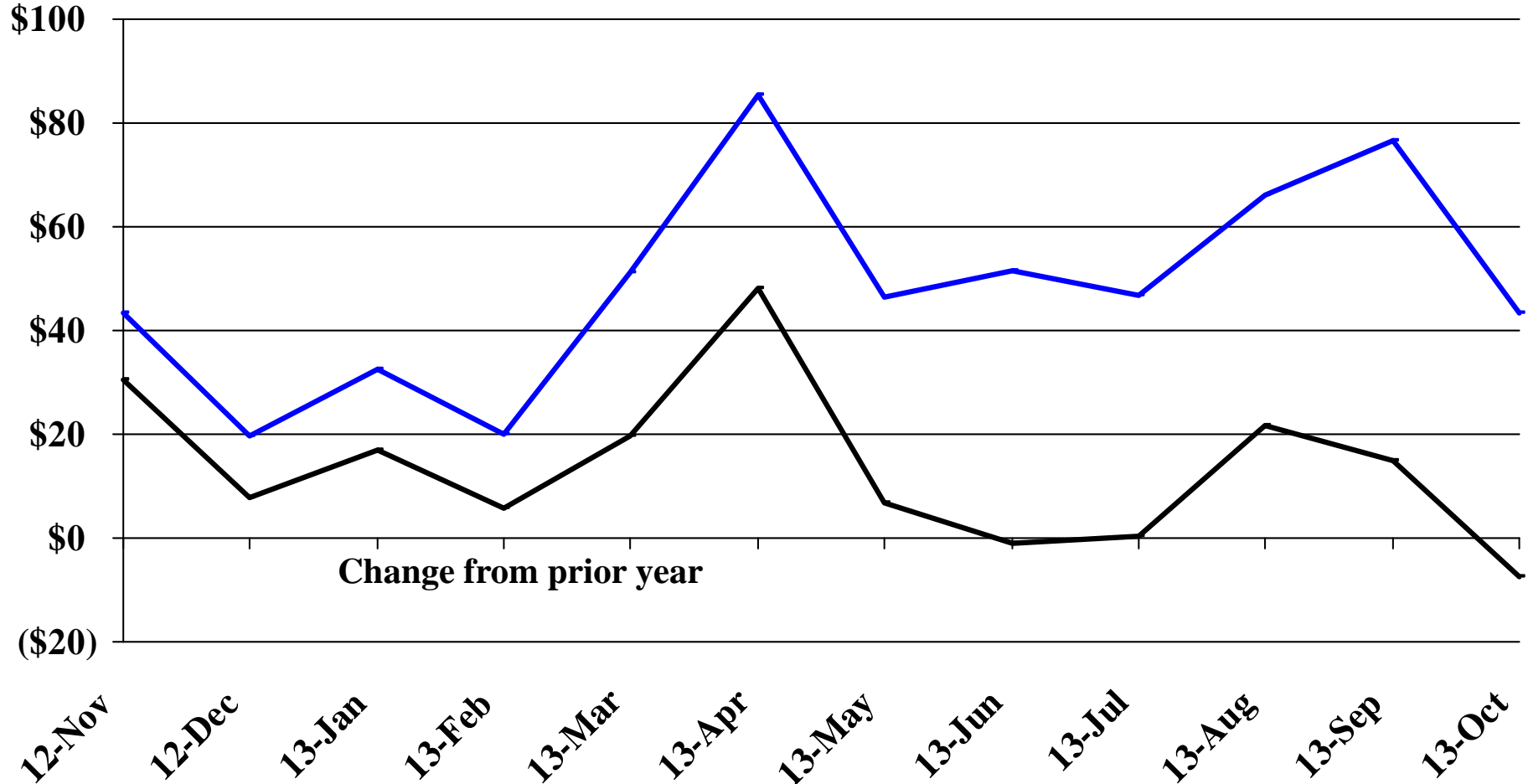


Recent Trends in the Number of Residential Units Authorized by Building Permits for Pennington County



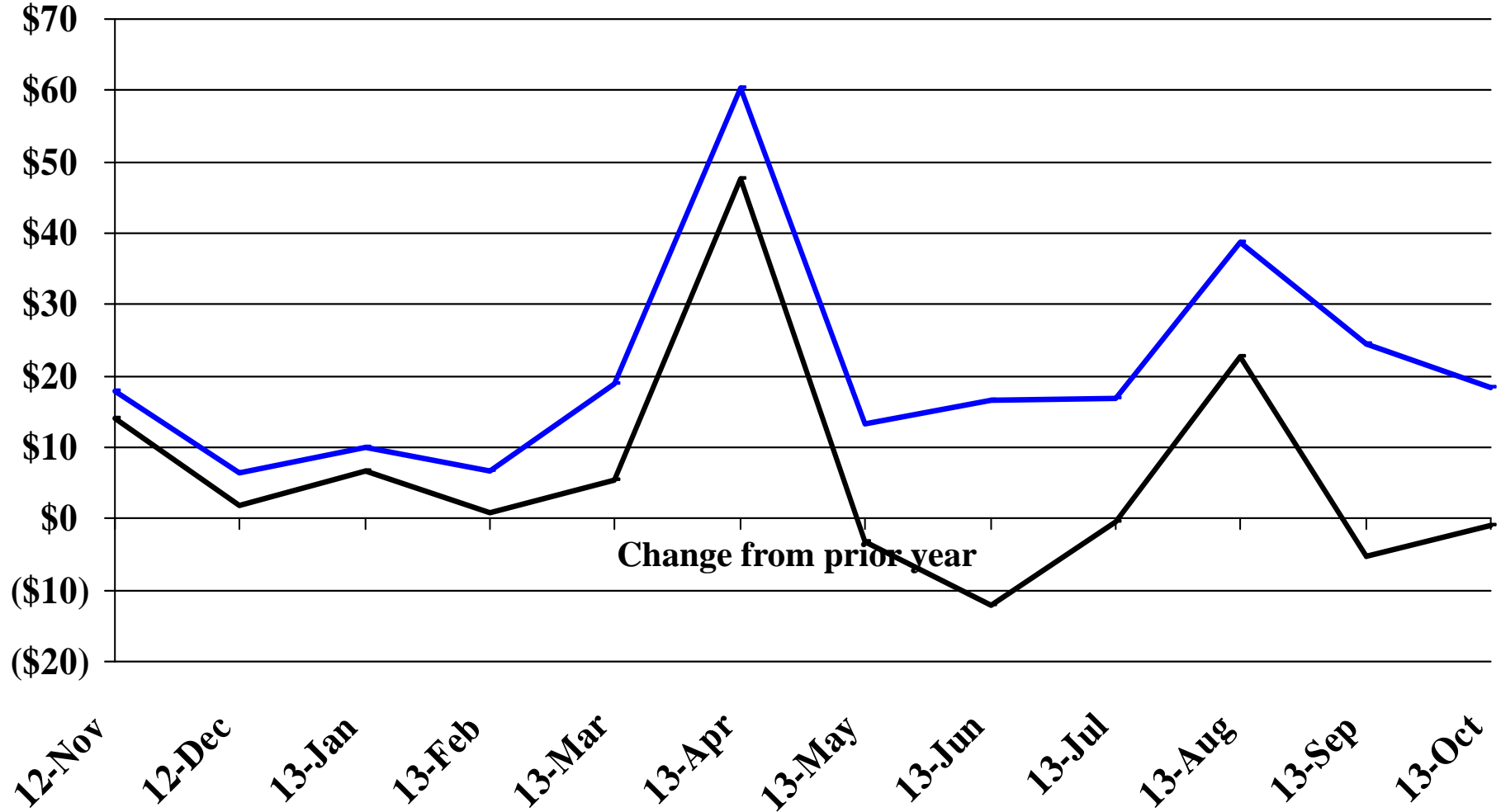
Recent Trends in the Value of Residential Building Permits Issued for South Dakota

Millions



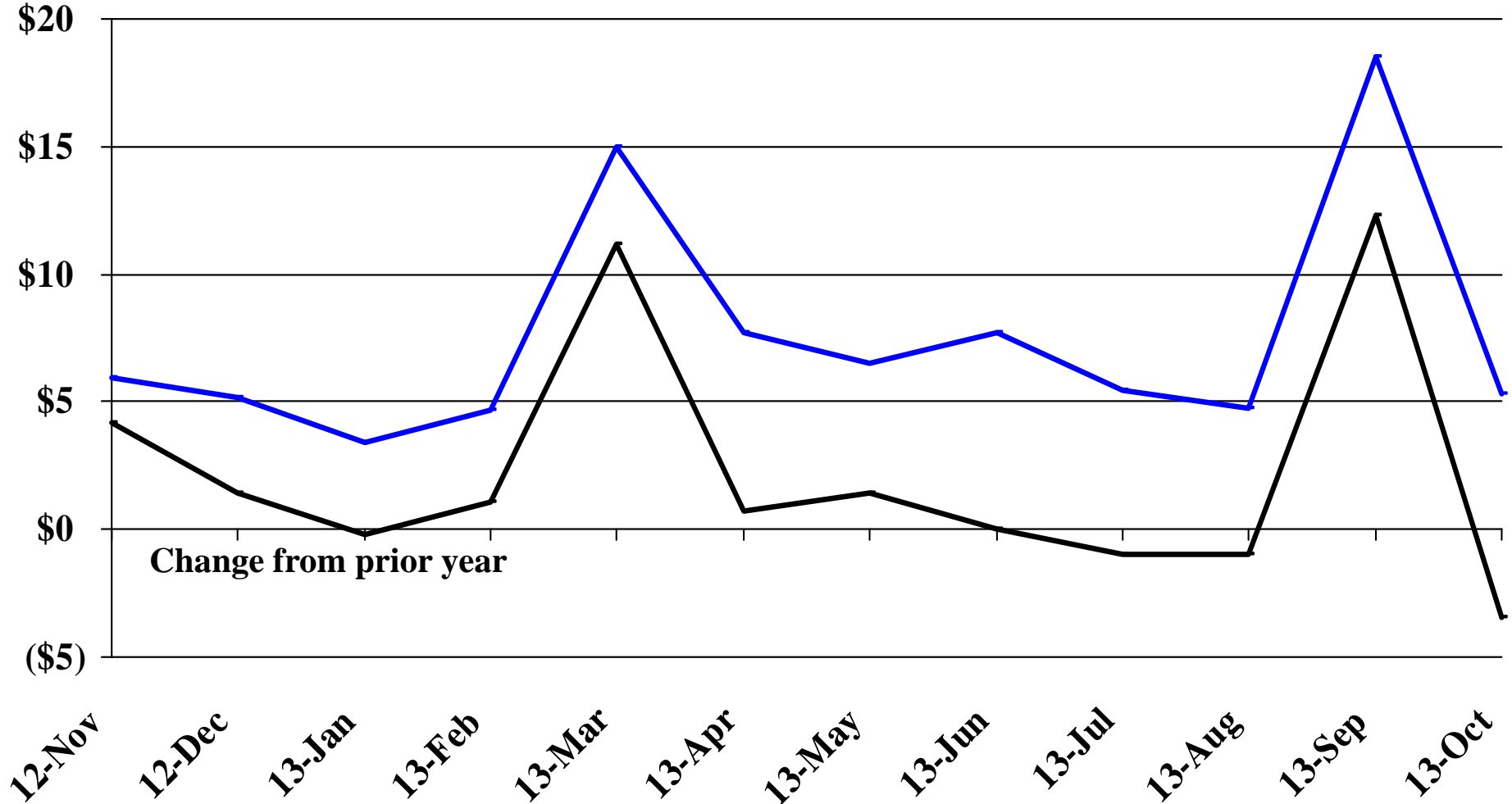
Recent Trends in the Value of Residential Building Permits Issued for Minnehaha County

Millions

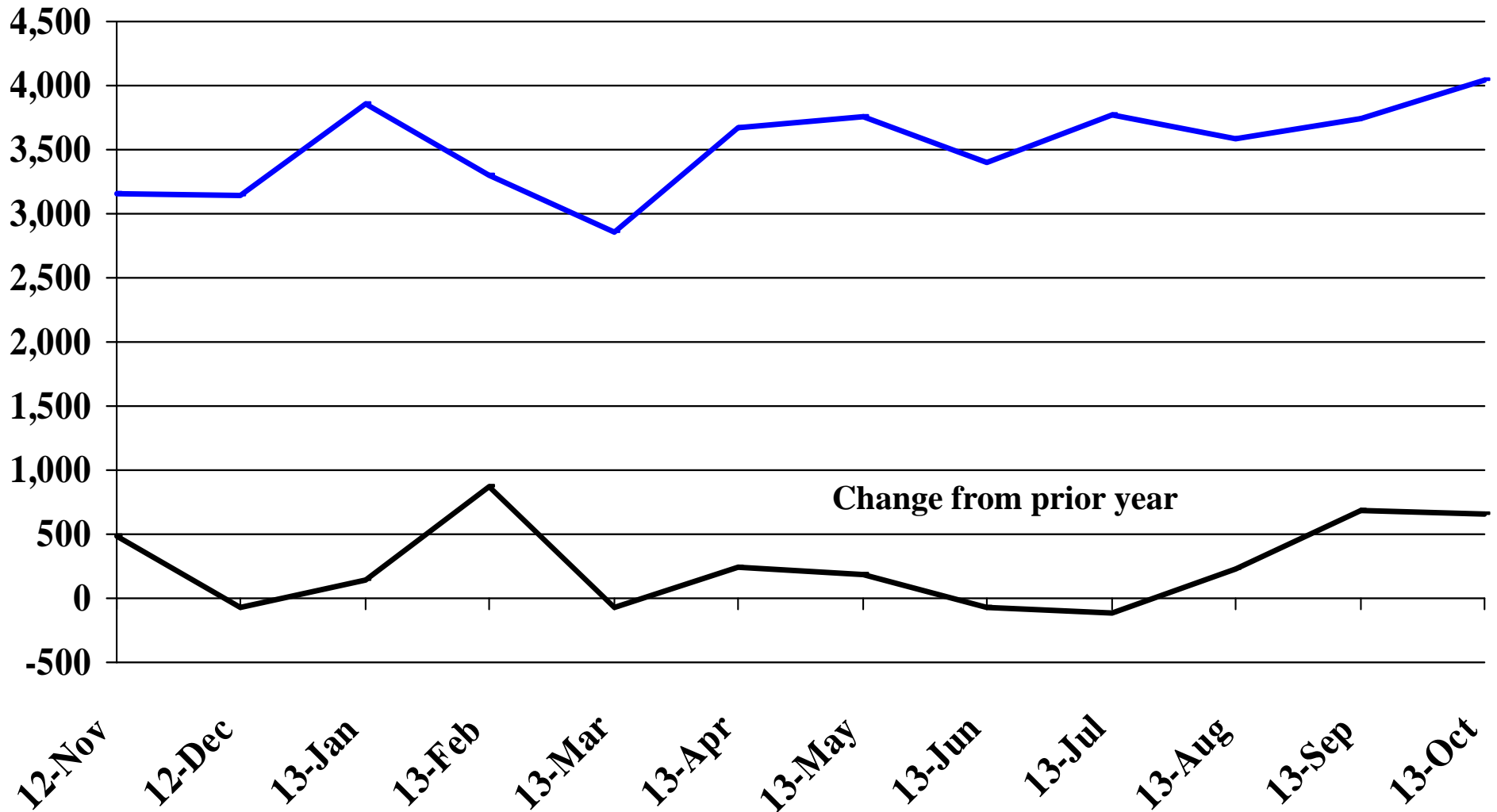


Recent Trends in the Value of Residential Building Permits Issued for Pennington County

Millions

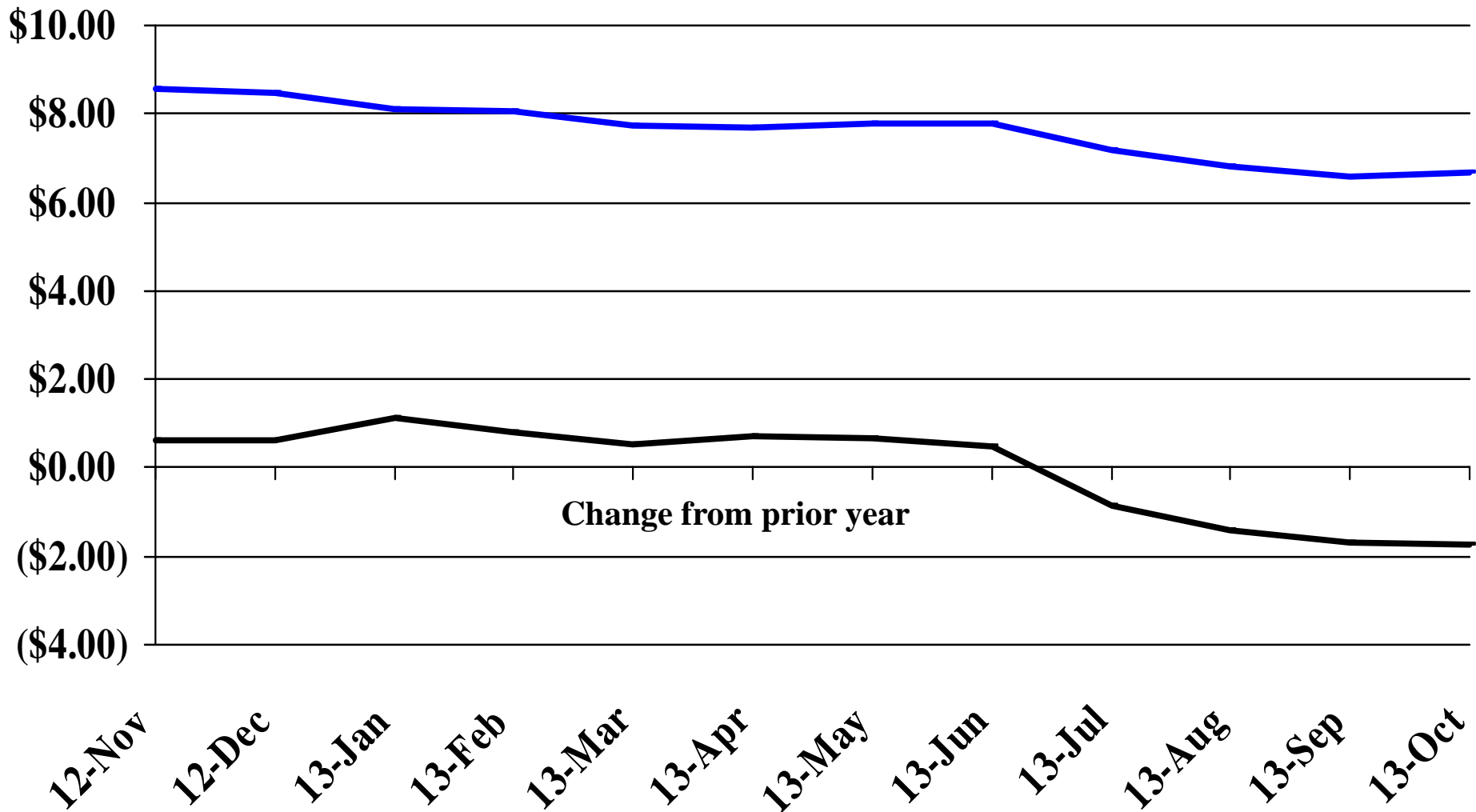


Recent Trends in the Number of New Non-Commercial Vehicles Titled



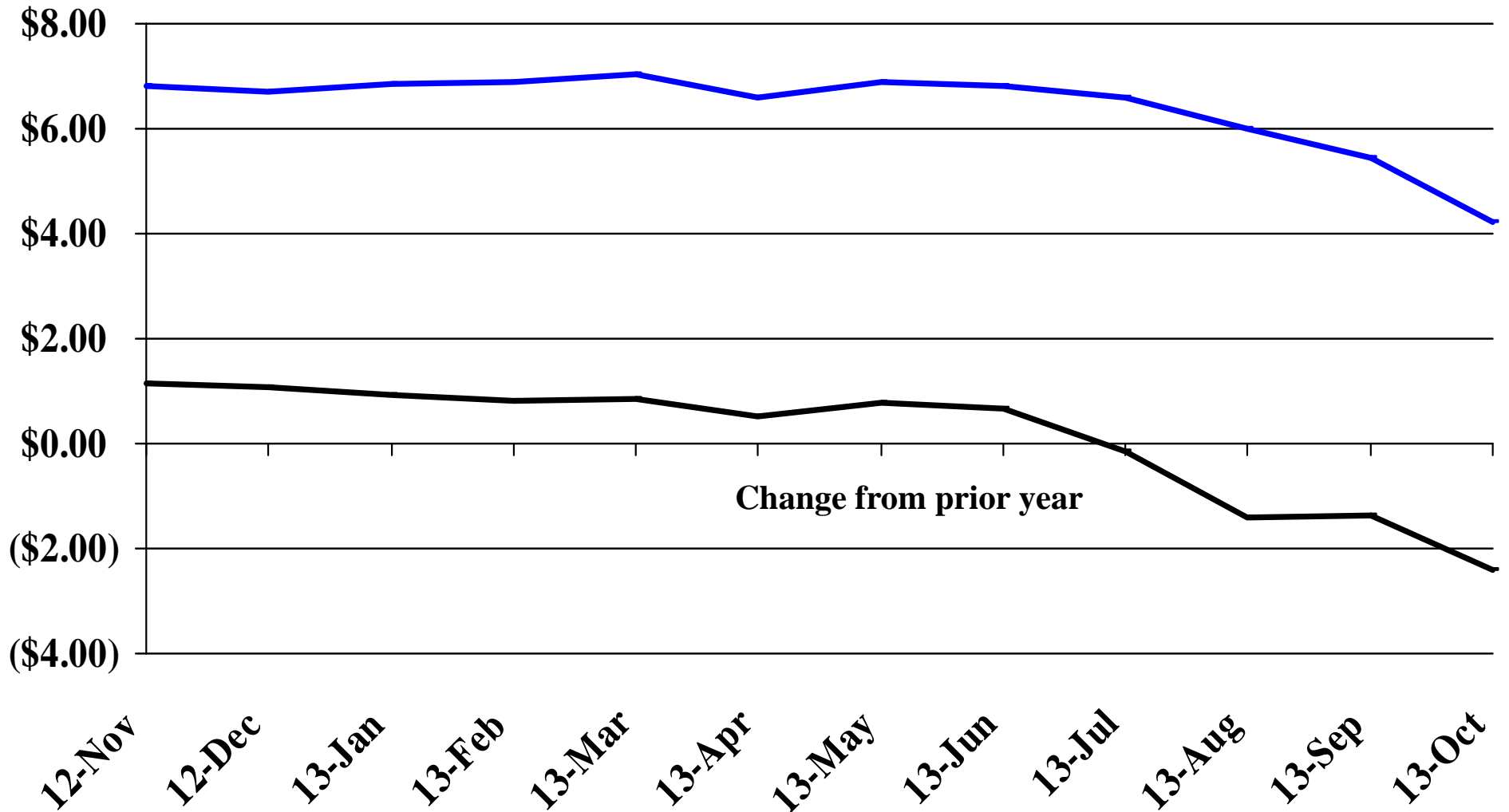
Recent Trends in the Price of Wheat

\$'s Per Bushel



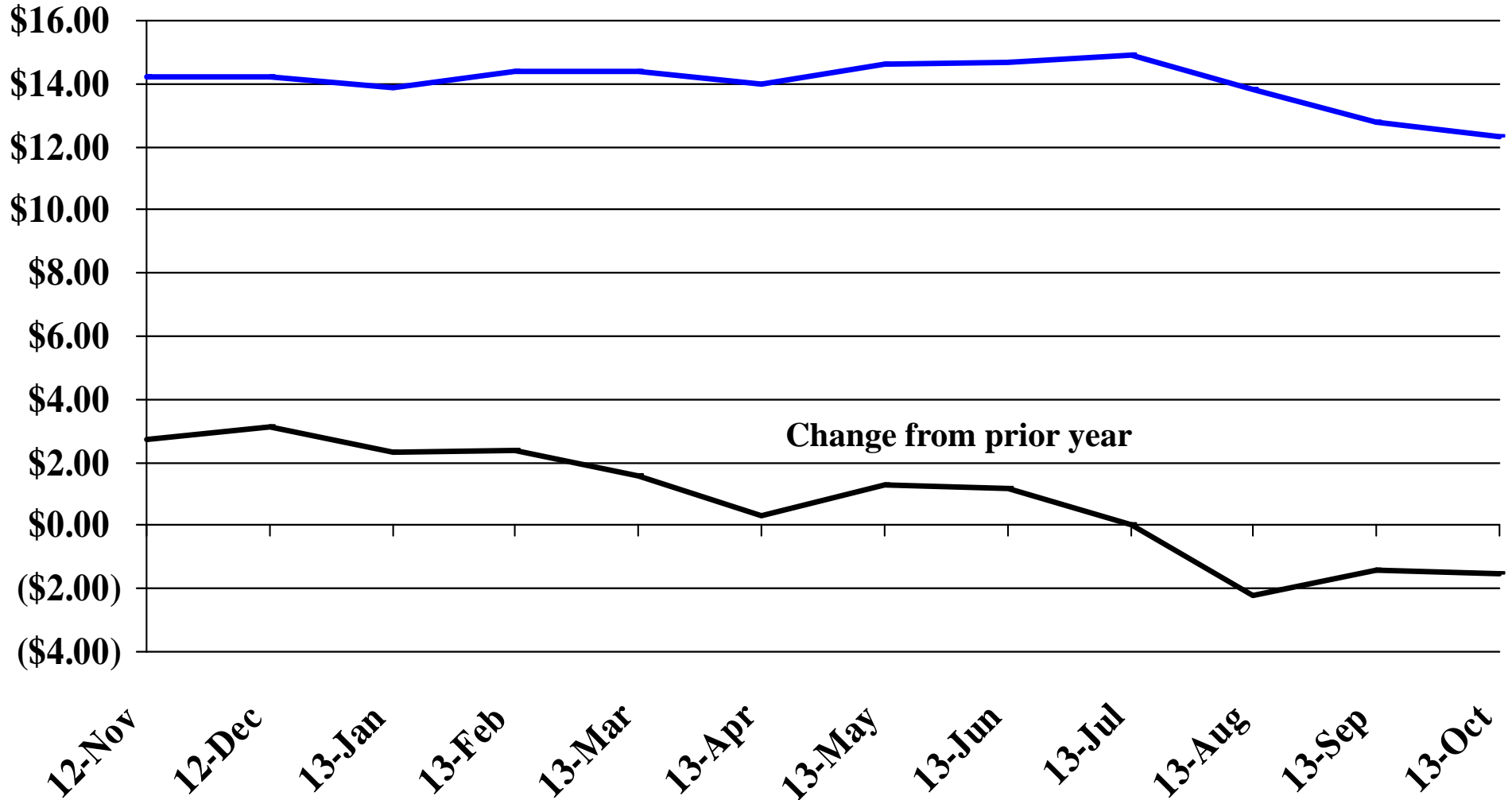
Recent Trends in the Price of Corn

\$'s Per Bushel



Recent Trends in the Price of Soybeans

\$'s Per Bushel



Recent Trends in the Price of Hay

