

The South Dakota Economy

July 11, 2014

GDP by State

- During 2013, South Dakota's economy registered strong growth as the current dollar Gross Domestic Product (GDP) by state totaled \$46.7 billion, a growth of 6.8% over 2012. This growth was 4th highest of all states and compares to the US growth of 3.5% over the same time period.
- South Dakota's real (inflation adjusted) GDP by state in 2013 increased at a rate of 3.1%, 9th highest growth rate among all states and was higher than the national average growth of 1.8% on an inflation adjusted basis.
 - The largest contributor to growth in real GDP was from the agriculture industry, which grew 14.4% in 2013 as the Ag economy rebounded from the 2012 drought.

Employment growth in South Dakota

- On an annual basis during 2013, South Dakota nonfarm employment levels were 3,100 jobs higher than 2012, or an increase of 0.7% after annual benchmark revisions.
- In May 2014, total SD nonfarm employment was up 1,900 jobs or 0.5%, compared to May 2013.
 - Sectors that are currently experiencing year-over-year growth (May 2014 compared to May 2013 levels) include: other services (+2.5%); trade, transportation, and utilities (+1.4%); professional and business services (+1.4%); manufacturing (+1.0%); financial activities (+0.3%); and, government (+0.3%).
 - Sectors currently experiencing year-over-year declines include: education and health services (-0.4%); logging, mining, and construction (-0.9%); and, leisure and hospitality (-1.1%).

The unemployment rate continues to be one of the lowest in the nation.

- The unemployment rate in South Dakota was tied for the fifth lowest in the nation in May at 3.8%.
 - SD's unemployment rate in April was 0.1% higher than last month and 0.1% lower than a year ago.
- The U.S. unemployment rate was 6.3% in May 2014.

Income growth in South Dakota.

- South Dakota's preliminary total personal income for 2013 increased 1.8% compared to 2012. The soft growth rate realized is partially attributed to a decrease in farm income in 2013.
 - In 2013, South Dakota's farm income decreased 6.0% compared to 2012. South Dakota's nonfarm income grew by 2.5% in 2013 compared to 2012, which was the same as the US growth rate of 2.5% over the same time period.
- Over the past three years (2010-2013), the average annual growth of South Dakota's personal income was 5.1%, which was 9th highest of all states. This compares to the US growth in total personal income of 4.3% over the same time period.
- South Dakota's preliminary per capita personal income in 2013 was \$45,558, which ranked 21st in the nation, and was 2.3% higher than the US per capita personal income of \$44,543 during 2013.

The housing market.

- In the last twelve months (June 2013 – May 2014) there were 135 more total family housing units authorized by building permits in South Dakota than there were the same period before.*
- The value of total family housing building permits is \$41.12 million higher in the last twelve months compared to the same period the year before. *

The agricultural economy.

- In 2014, South Dakota producers planted 5.90 million acres of corn, down 5% from last year, while planted soybean acreage is estimated at 4.95 million, up 8% from a year ago and represents a record high.
- As of July 6th, corn condition was rated 97% fair to excellent, soybean condition rated 96% fair to excellent, winter wheat condition was rated 96% fair to excellent and pasture and range conditions were rated 99% fair to excellent.
- As of July 6th, topsoil moisture conditions were rated just 6% short to very short while subsoil moisture conditions were rated 5% short to very short.
- As of June 1st, South Dakota's 1,000+ capacity feedlots reported 225,000 cattle on feed for the slaughter market. This was down 4% from the prior month but up 5% from a year ago.
- Crop prices received by South Dakota farmers continue to be lower than a year ago. In May, corn prices received were \$4.24/bushel, down \$2.64 compared to a year ago; soybean prices were \$14.00/bushel, down \$0.60 from a year ago; wheat prices were \$7.26/bushel, down \$0.53 compared to a year ago; and, hay prices were \$131/ton, down \$108/ton from a year ago.

* Building permit statistics are from monthly reporting places only.

Economic Indicators for the State of South Dakota for the latest 12 Month Period

Category	Time Period												12 Month Avg/Total
	Jun-13	Jul-13	Aug-13	Sep-13	Oct-13	Nov-13	Dec-13	Jan-14	Feb-14	Mar-14	Apr-14	May-14	
Nonfarm Employment Data (information is seasonally adjusted by BLS and expressed in thousands)													
Total Nonfarm	417.20	417.10	418.10	418.50	416.70	418.10	418.10	418.90	419.90	419.90	421.30	419.00	418.57
change from prior year	2.90	3.10	4.20	3.80	1.80	2.50	1.80	2.60	2.90	3.10	5.80	1.90	3.03
% change from prior year	0.70	0.75	1.01	0.92	0.43	0.60	0.43	0.62	0.70	0.74	1.40	0.46	0.73
N.R., Mining & Const.	21.40	21.60	21.60	21.50	21.10	21.30	21.70	21.90	21.10	21.30	21.40	20.90	21.40
change from prior year	0.30	0.90	1.00	1.00	0.70	0.60	0.70	1.00	(0.10)	0.30	0.60	(0.20)	0.57
% change from prior year	1.42	4.35	4.85	4.88	3.43	2.90	3.33	4.78	(0.47)	1.43	2.88	(0.95)	2.72
Manufacturing Employment	41.70	41.50	41.50	41.40	41.10	41.40	41.80	41.80	42.10	42.20	42.10	42.00	41.72
change from prior year	0.30	0.00	0.00	(0.10)	(0.50)	(0.30)	0.30	0.20	0.40	0.50	0.50	0.40	0.14
% change from prior year	0.72	0.00	0.00	(0.24)	(1.20)	(0.72)	0.72	0.48	0.96	1.20	1.20	0.96	0.34
Trade, Transp., & Utilities	83.50	83.60	83.40	83.50	82.80	83.40	83.40	83.50	84.40	84.40	85.10	84.80	83.82
change from prior year	0.50	0.70	0.40	0.40	(0.30)	0.00	0.00	0.30	1.10	1.00	1.80	1.20	0.59
% change from prior year	0.60	0.84	0.48	0.48	(0.36)	0.00	0.00	0.36	1.32	1.20	2.16	1.44	0.71
Financial Activities	29.90	29.80	29.90	29.90	29.90	30.00	30.00	29.50	29.50	29.60	29.90	29.70	29.80
change from prior year	1.20	1.00	1.00	1.00	1.00	1.00	0.80	0.20	0.00	0.10	0.40	0.10	0.65
% change from prior year	4.18	3.47	3.46	3.46	3.46	3.45	2.74	0.68	0.00	0.34	1.36	0.34	2.23
Prof. and Business Services	29.50	29.40	29.30	29.40	29.70	29.70	29.60	30.10	29.90	29.90	29.60	30.00	29.68
change from prior year	0.40	0.20	0.10	0.10	0.40	0.40	0.30	0.80	0.60	0.60	0.40	0.40	0.39
% change from prior year	1.37	0.68	0.34	0.34	1.37	1.37	1.02	2.73	2.05	2.05	1.37	1.35	1.34
Educ. & Health Services	67.90	67.90	67.90	67.80	68.20	68.30	68.10	68.00	68.50	68.30	68.10	67.60	68.05
change from prior year	0.40	0.50	0.60	0.30	0.70	0.80	0.60	0.30	0.60	0.40	0.30	(0.30)	0.43
% change from prior year	0.59	0.74	0.89	0.44	1.04	1.19	0.89	0.44	0.88	0.59	0.44	(0.44)	0.64
Leisure & Hospitality	44.50	44.70	44.70	44.70	44.50	44.40	44.20	44.30	44.70	44.70	45.20	44.10	44.56
change from prior year	0.10	0.50	0.50	0.40	0.10	0.10	(0.40)	(0.40)	0.10	0.10	1.10	(0.50)	0.14
% change from prior year	0.23	1.13	1.13	0.90	0.23	0.23	(0.90)	(0.89)	0.22	0.22	2.49	(1.12)	0.32
Other Services	16.00	16.00	16.00	16.00	15.80	15.90	15.90	16.30	16.10	15.90	16.10	16.40	16.03
change from prior year	0.20	0.10	0.10	0.20	0.00	0.10	0.00	0.40	0.20	0.00	0.10	0.40	0.15
% change from prior year	1.27	0.63	0.63	1.27	0.00	0.63	0.00	2.52	1.26	0.00	0.63	2.50	0.94
Government	76.70	76.60	77.80	78.30	77.50	77.50	77.20	77.40	77.40	77.40	77.70	77.20	77.39
change from prior year	(0.40)	(0.60)	0.60	0.60	(0.30)	(0.30)	(0.60)	(0.30)	(0.20)	0.00	0.60	0.20	(0.06)
% change from prior year	(0.52)	(0.78)	0.78	0.77	(0.39)	(0.39)	(0.77)	(0.39)	(0.26)	0.00	0.78	0.26	(0.08)
NonFarm (excluding Govt.)	340.5	340.5	340.3	340.2	339.2	340.6	340.9	341.5	342.5	342.5	343.6	341.8	341.18
change from prior year	3.3	3.7	3.6	3.2	2.1	2.8	2.4	2.9	3.1	3.1	5.2	1.7	3.09
% change from prior year	0.98	1.10	1.07	0.95	0.62	0.83	0.71	0.86	0.91	0.91	1.54	0.50	0.91

Economic Indicators for the State of South Dakota for the latest 12 Month Period

Category	Time Period												12 Month Avg/Total
	Jun-13	Jul-13	Aug-13	Sep-13	Oct-13	Nov-13	Dec-13	Jan-14	Feb-14	Mar-14	Apr-14	May-14	
Number of Housing Units Authorized by Building Permits (information is not seasonally adjusted):													
One-Family Units - S.D. Total	224	246	204	264	217	179	83	76	75	158	308	234	2,268
change from prior year	(2)	33	(17)	9	(64)	8	(35)	(9)	(37)	(76)	(127)	4	(313)
Total Family Units - S.D. Total	369	339	570	625	285	200	195	246	116	492	646	440	4,523
change from prior year	(74)	(16)	305	93	(65)	(141)	29	(39)	(17)	(74)	18	116	135
Total Family Units - Minnehaha Co.	122	94	368	180	126	71	115	54	54	365	452	271	2,272
change from prior year	(156)	(27)	254	(88)	3	(57)	69	(116)	6	49	(18)	177	96
Total Family Units - Pennington Co.	43	56	24	187	31	31	23	22	18	61	34	36	566
change from prior year	(5)	22	(14)	156	(53)	3	(27)	3	(7)	(27)	(17)	(2)	32
Value of Building Permits Issued (information is not seasonally adjusted and is expressed in millions of dollars):													
One-Family units - S.D. Total	41.32	41.57	37.07	46.43	37.78	28.79	15.32	14.09	15.88	30.21	59.79	44.87	413.10
change from prior year	4.28	5.67	(3.10)	5.74	(6.09)	(2.33)	(0.93)	(1.63)	(2.05)	7.14	(9.81)	5.01	1.89
Total Family units - S.D. Total	51.65	46.81	66.23	76.64	43.31	31.98	22.82	27.95	19.41	57.40	89.51	62.76	596.47
change from prior year	(1.09)	0.26	21.64	14.89	(7.31)	(11.50)	3.02	(4.63)	(0.71)	6.18	3.95	16.42	41.12
Total Family Units - Minnehaha Co.	16.64	16.77	38.75	24.47	18.39	11.37	10.96	7.50	8.26	38.85	53.86	31.32	277.14
change from prior year	(12.14)	(0.33)	22.66	(5.35)	(0.85)	(6.43)	4.45	(2.44)	1.45	19.99	(6.49)	17.97	32.48
Total Family Units - Pennington Co.	7.69	5.45	4.72	18.49	5.30	6.48	4.85	3.29	3.63	7.38	7.53	7.49	82.30
change from prior year	0.02	(0.98)	(0.95)	12.28	(3.47)	0.56	(0.34)	(0.12)	(1.04)	(7.65)	(0.17)	0.97	(0.88)

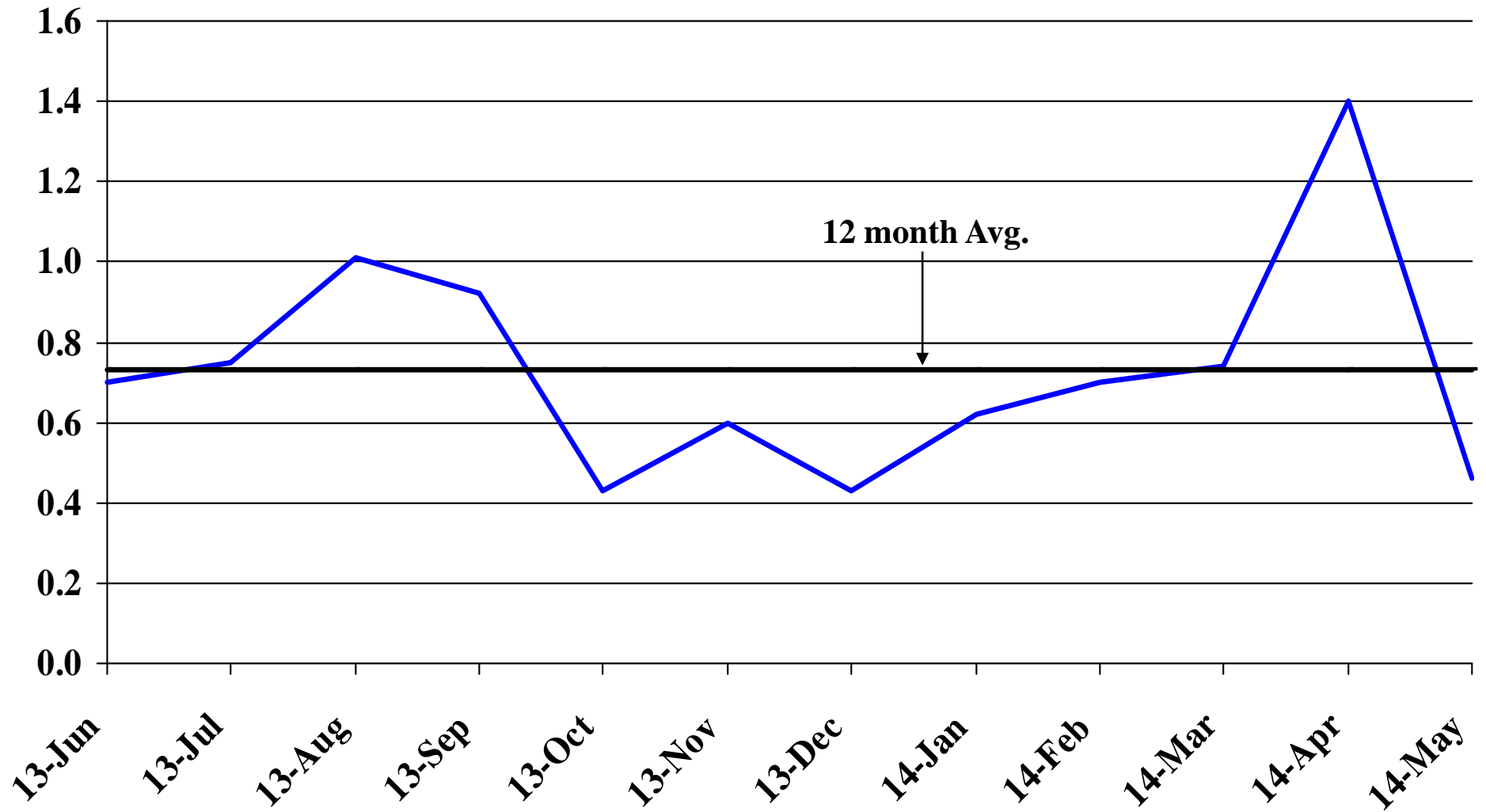
Automobile Data (information is not seasonally adjusted)													
New Non-Comm. Veh. Titled	3,396	3,767	3,581	3,740	4,047	2,923	3,421	4,314	2,746	2,829	3,323	3,365	41,452
change from prior year	(76)	(111)	223	685	654	(241)	285	451	(547)	(22)	(351)	(397)	553

Agriculture (information is not seasonally adjusted)													
Wheat	7.77	7.18	6.83	6.60	6.69	6.62	6.48	6.46	6.70	7.05	6.99	7.26	6.89
change from prior year	0.48	(0.85)	(1.40)	(1.71)	(1.72)	(1.94)	(2.00)	(1.64)	(1.35)	(0.70)	(0.70)	(0.53)	(1.17)
Corn	6.80	6.58	5.99	5.46	4.22	3.98	3.96	4.11	4.10	4.10	4.19	4.24	4.81
change from prior year	0.65	(0.15)	(1.40)	(1.37)	(2.39)	(2.84)	(2.75)	(2.74)	(2.78)	(2.94)	(2.40)	(2.64)	(1.98)
Soybeans	14.70	14.90	13.80	12.80	12.30	12.20	12.70	12.50	12.70	14.00	13.70	14.00	13.36
change from prior year	1.20	-	(2.20)	(1.40)	(1.50)	(2.00)	(1.50)	(1.40)	(1.70)	(0.40)	(0.30)	(0.60)	(0.98)
Hay	221.00	178.00	159.00	128.00	159.00	148.00	139.00	135.00	126.00	123.00	127.00	131.00	147.83
change from prior year	79.00	7.00	(45.00)	(78.00)	(62.00)	(61.00)	(74.00)	(76.00)	(90.00)	(98.00)	(95.00)	(108.00)	(58.42)

* Housing permit statistics are from monthly reporting places only.

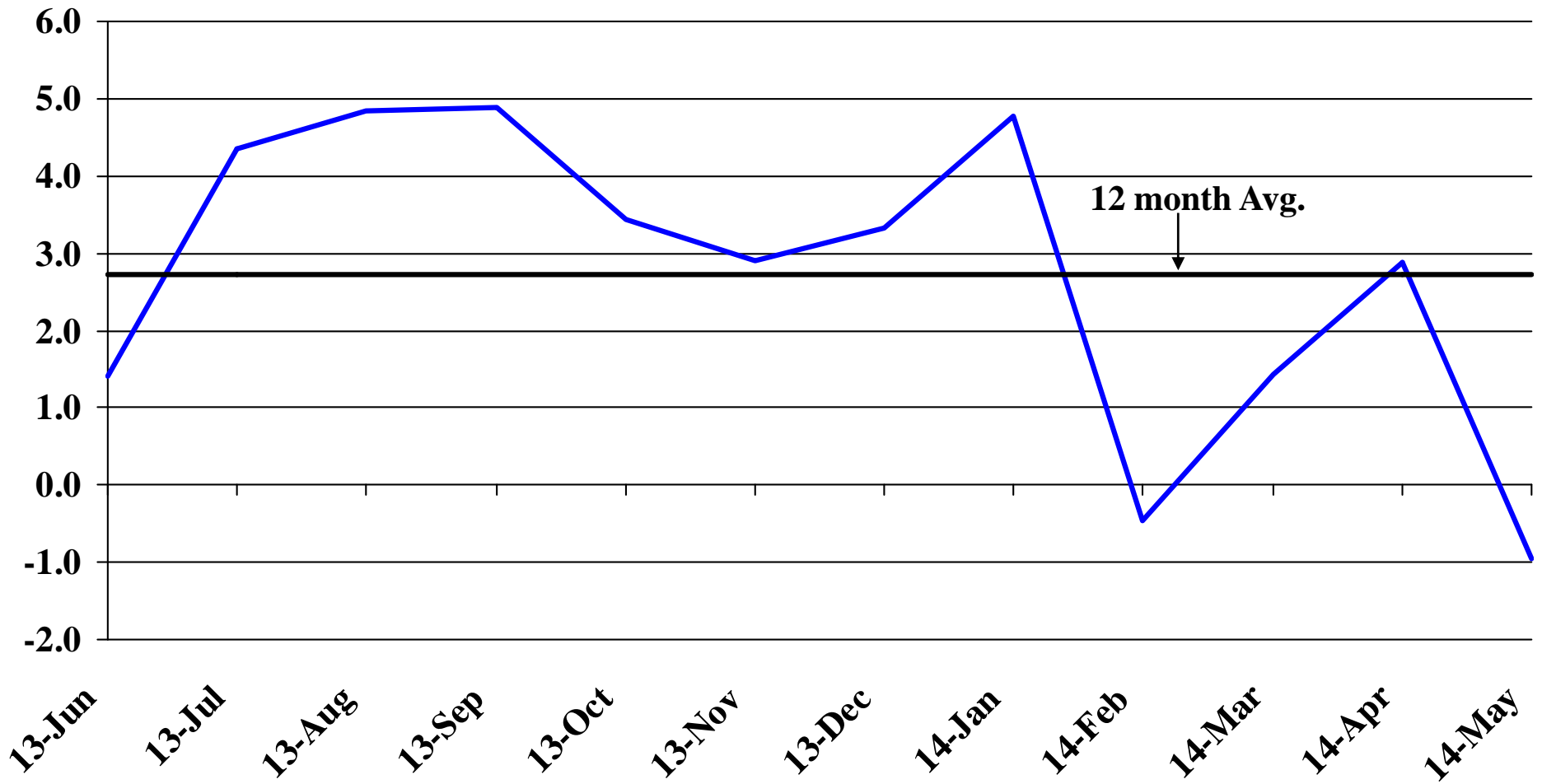
Recent Trends in Nonfarm Employment

Percent Change



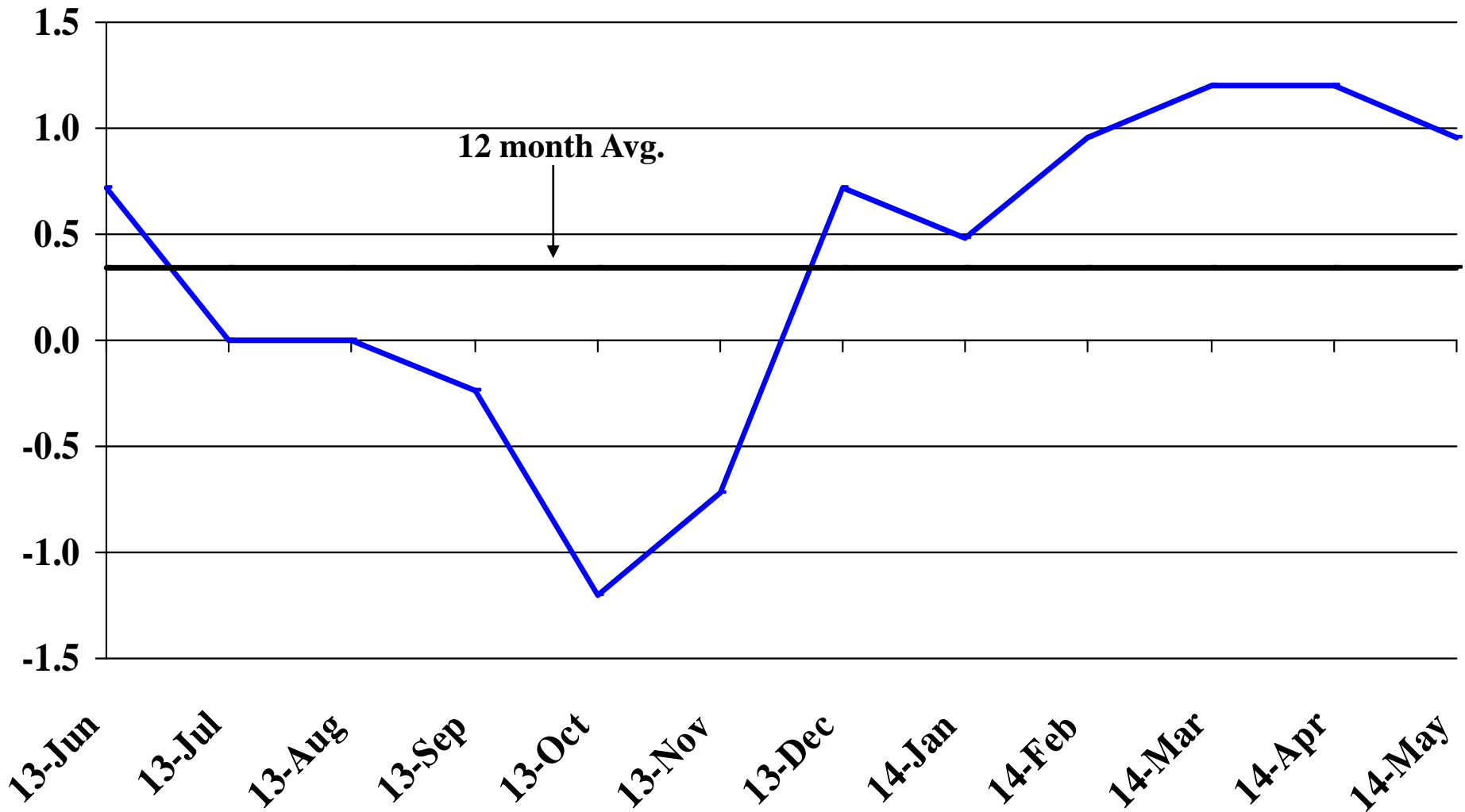
Recent Trends in Natural Resources, Mining and Construction Employment

Percent Change



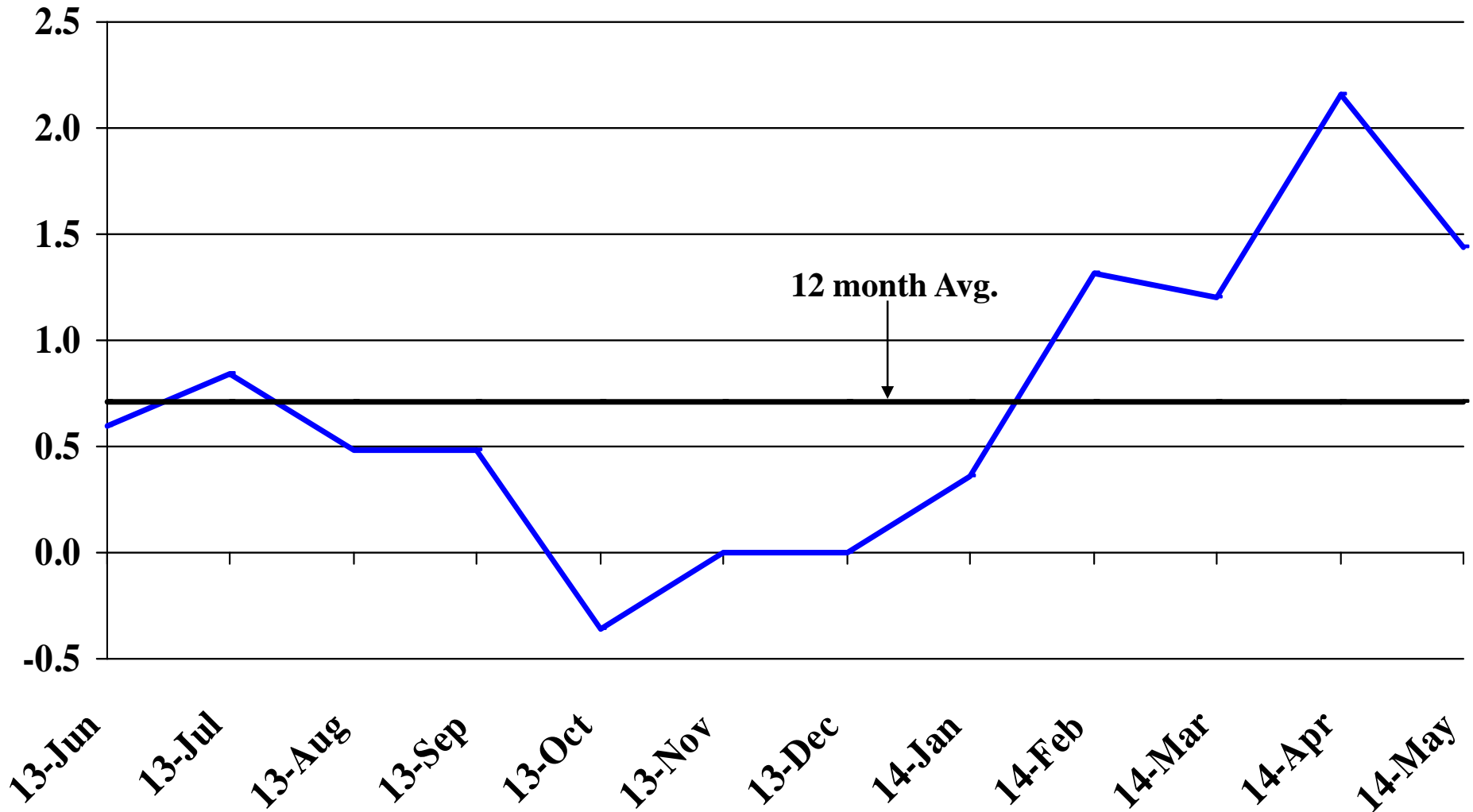
Recent Trends in Manufacturing Employment

Percent Change



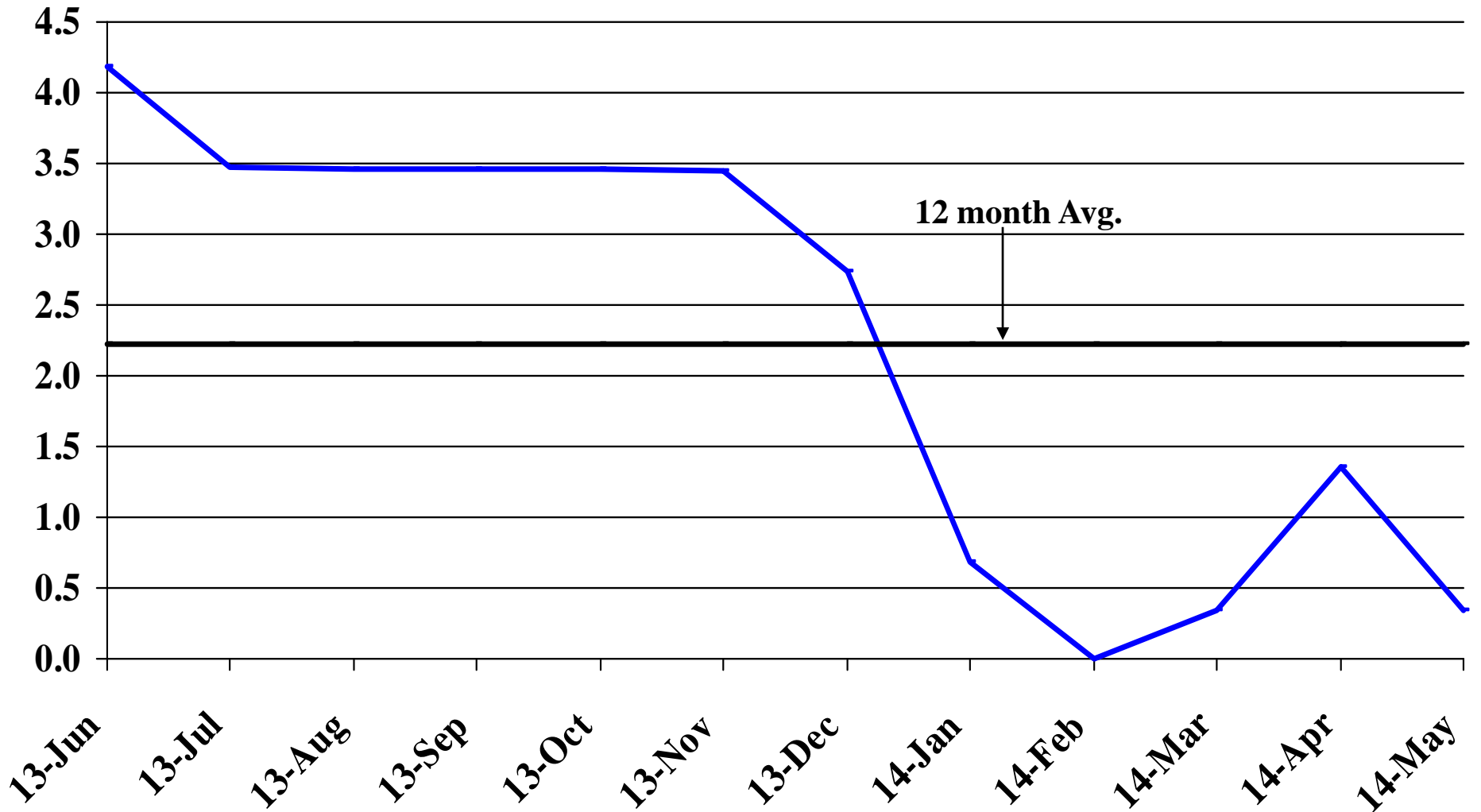
Recent Trends in Trade, Transportation, and Utilities Employment

Percent Change



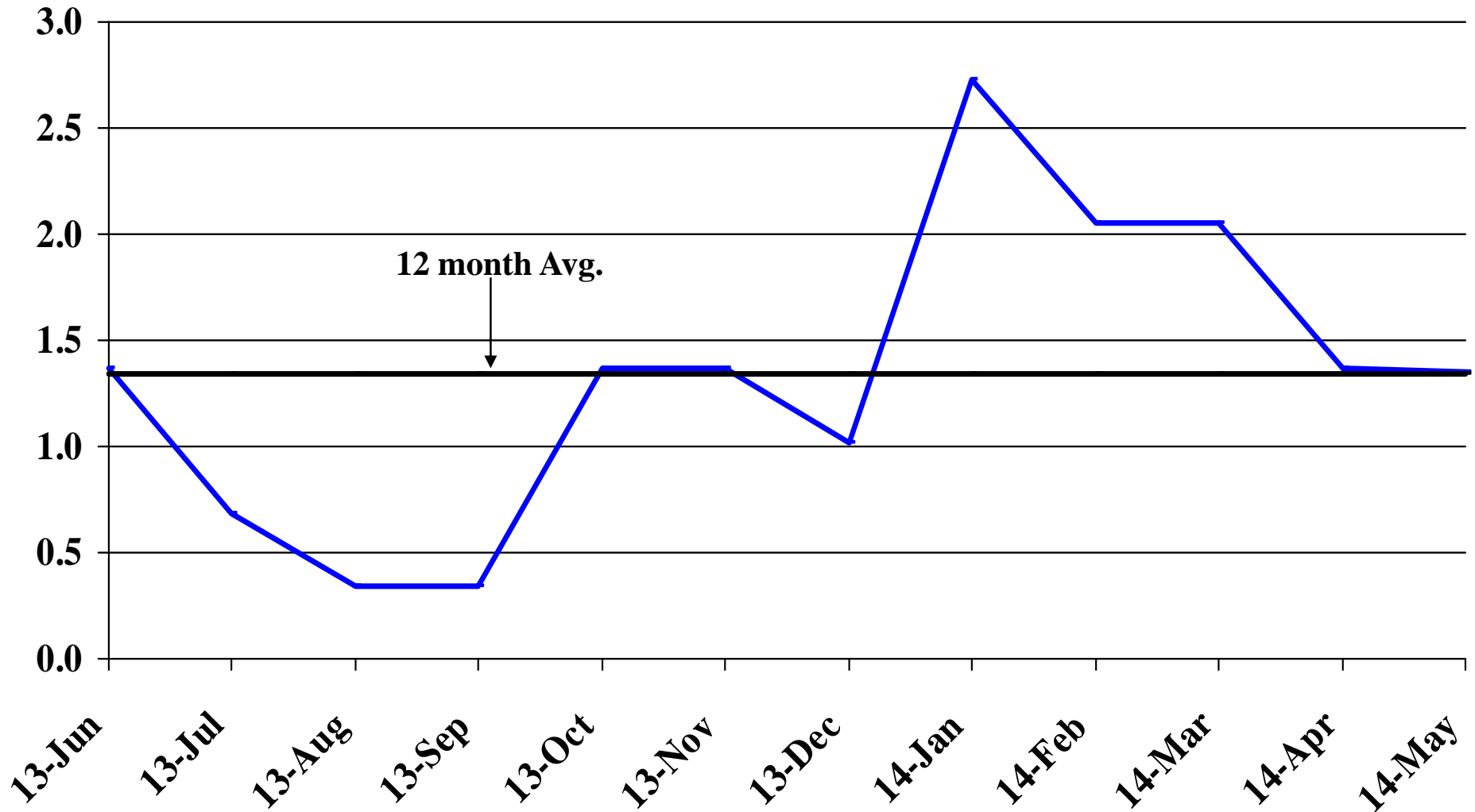
Recent Trends in Financial Activities Employment

Percent Change



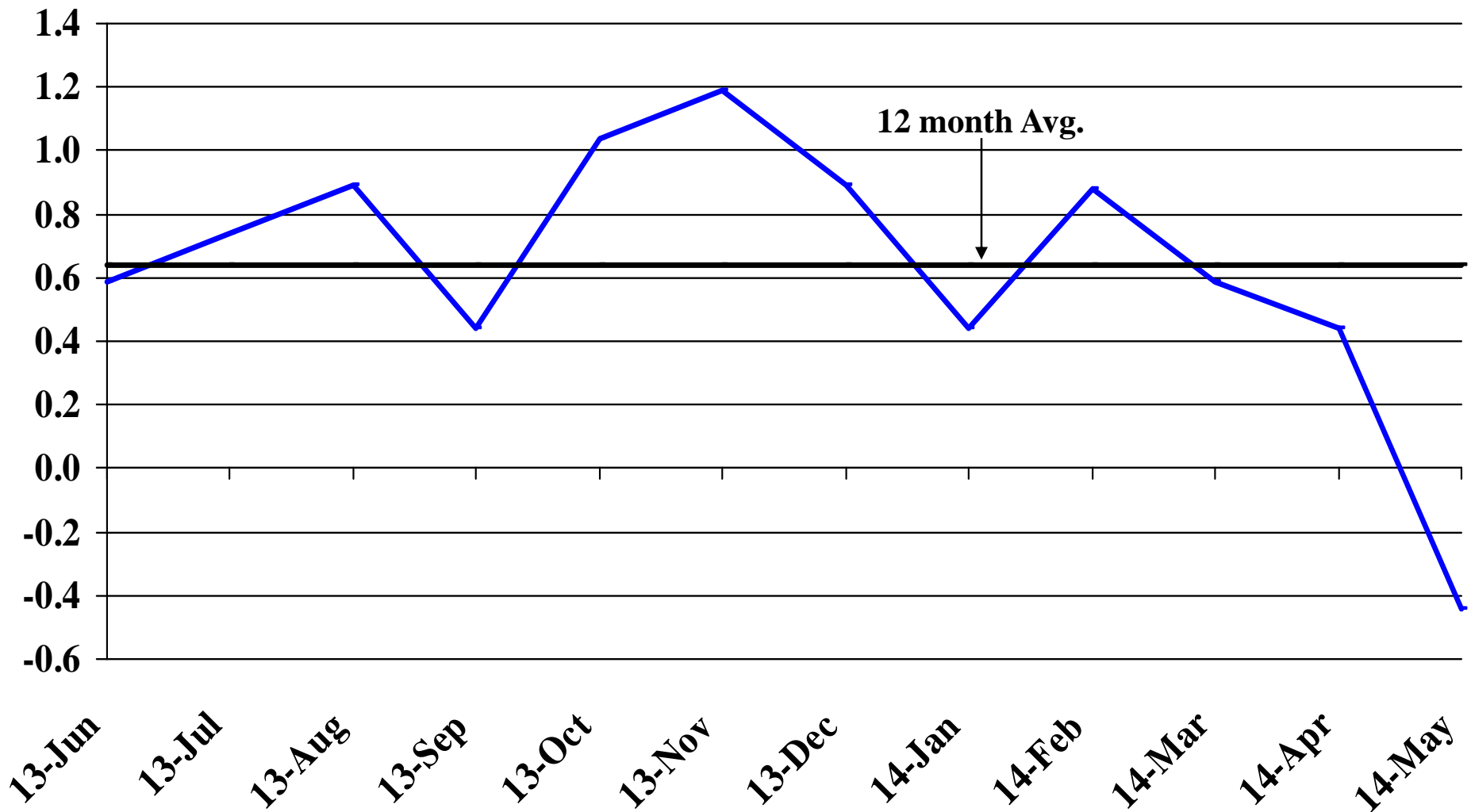
Recent Trends in Professional and Business Services Employment

Percent Change



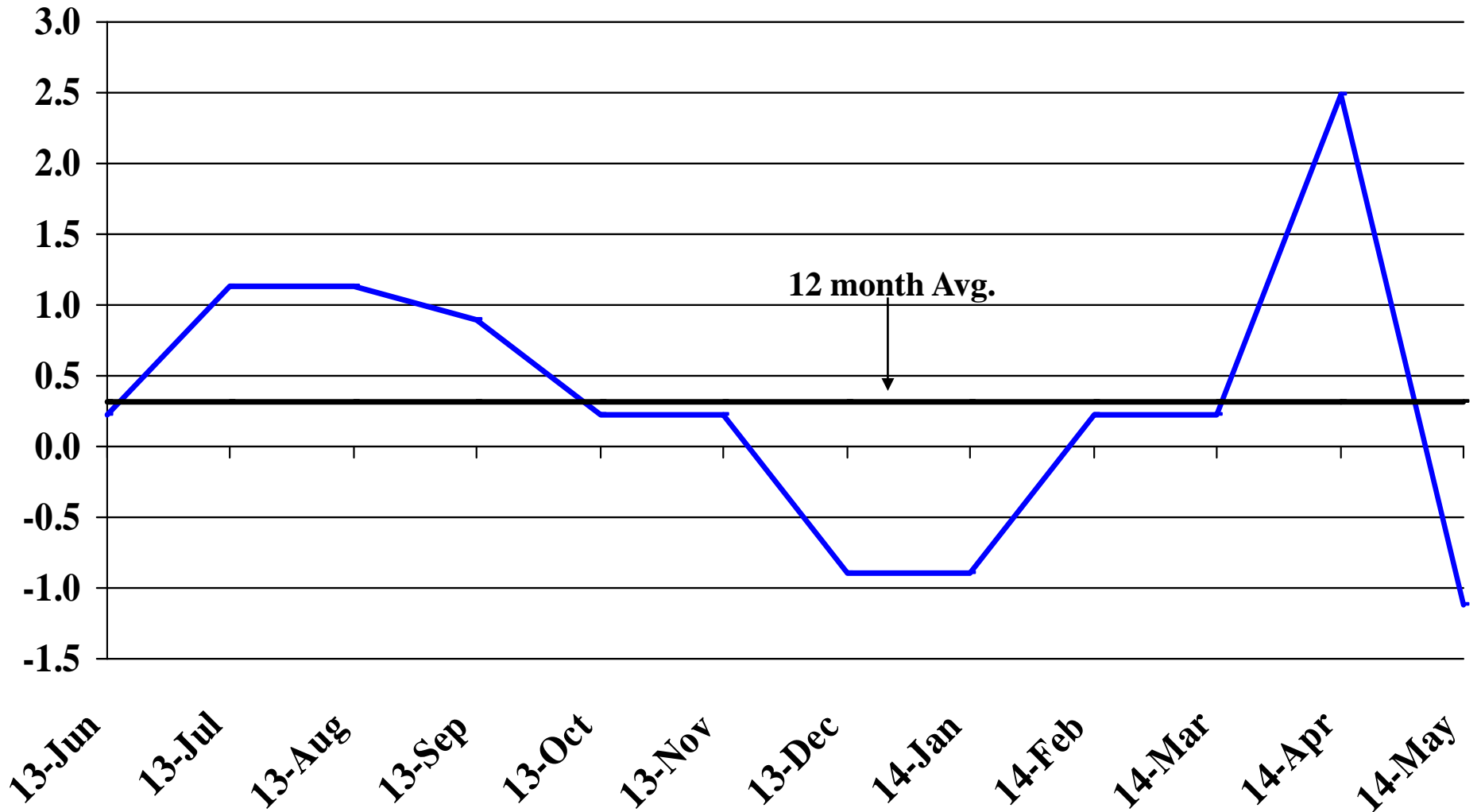
Recent Trends in Educational and Health Services Employment

Percent Change



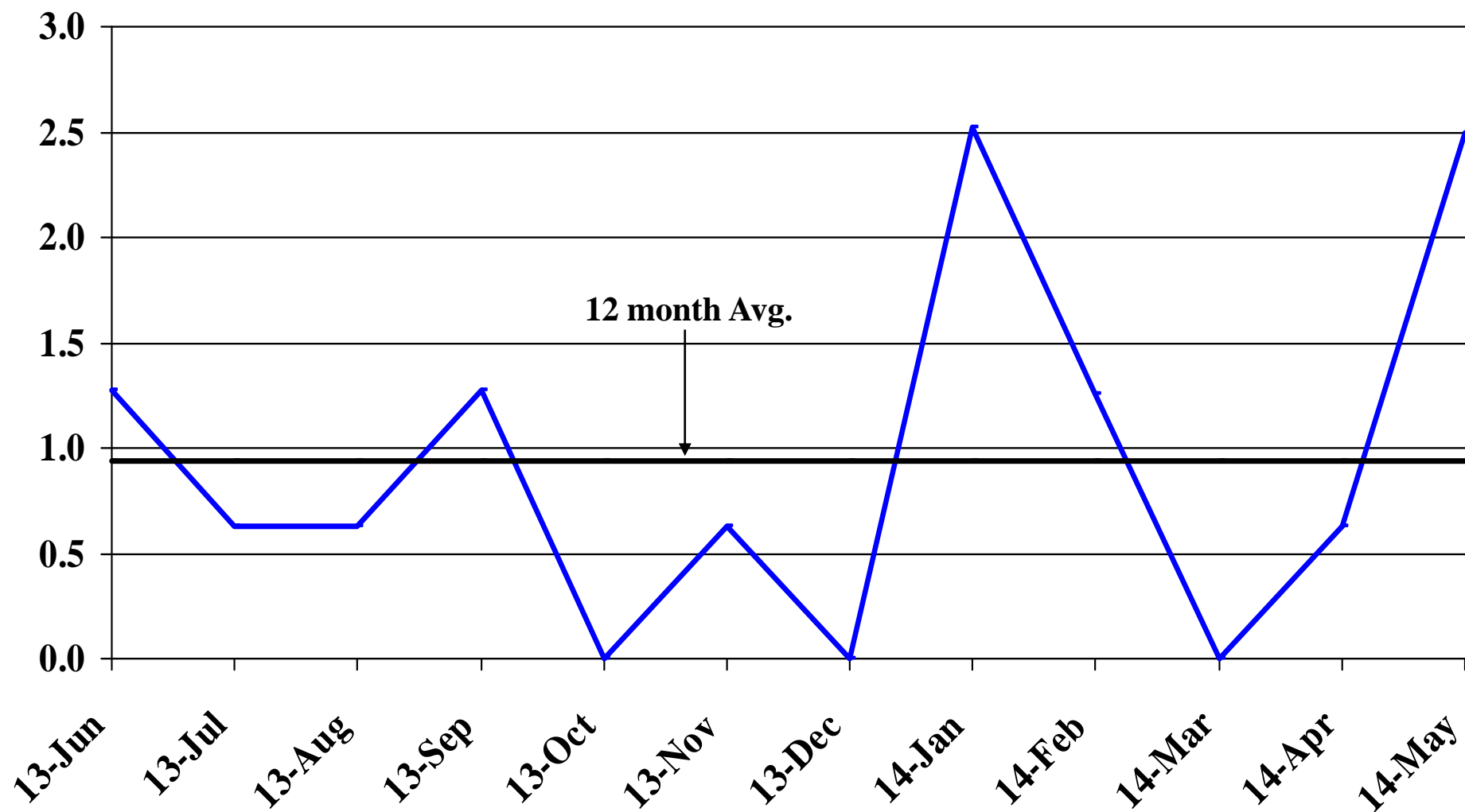
Recent Trends in Leisure and Hospitality Employment

Percent Change



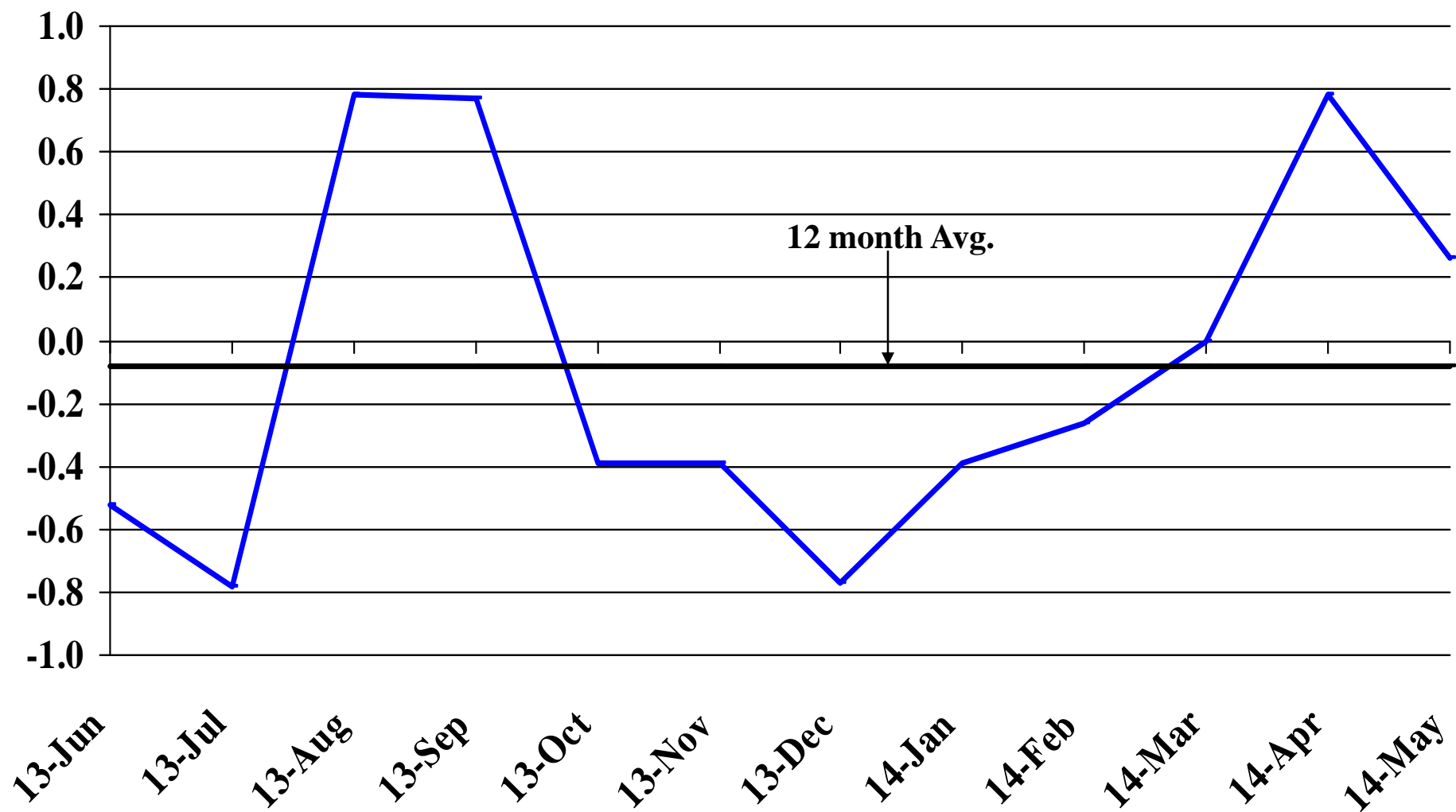
Recent Trends in Other Services Employment

Percent Change



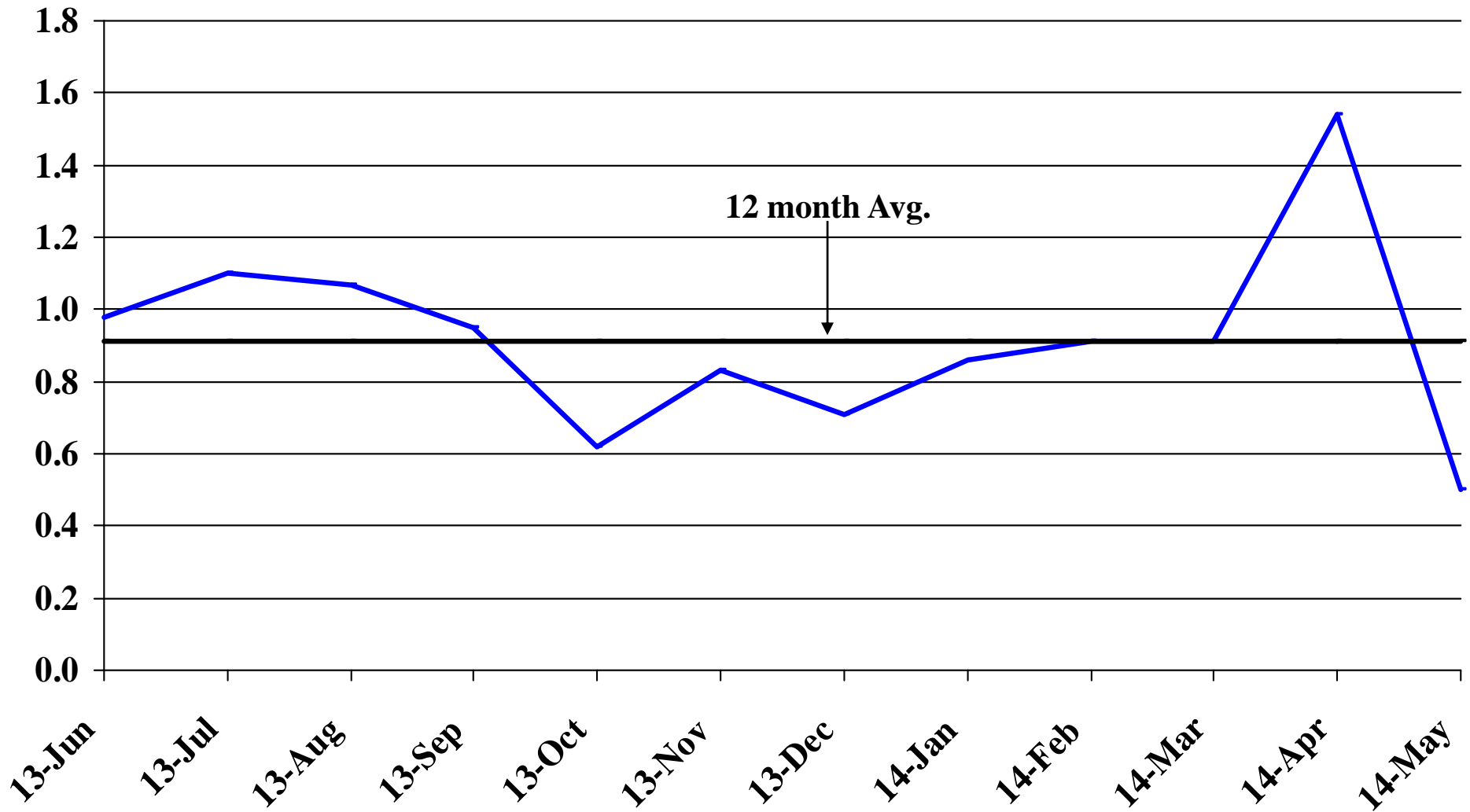
Recent Trends in Government Employment

Percent Change

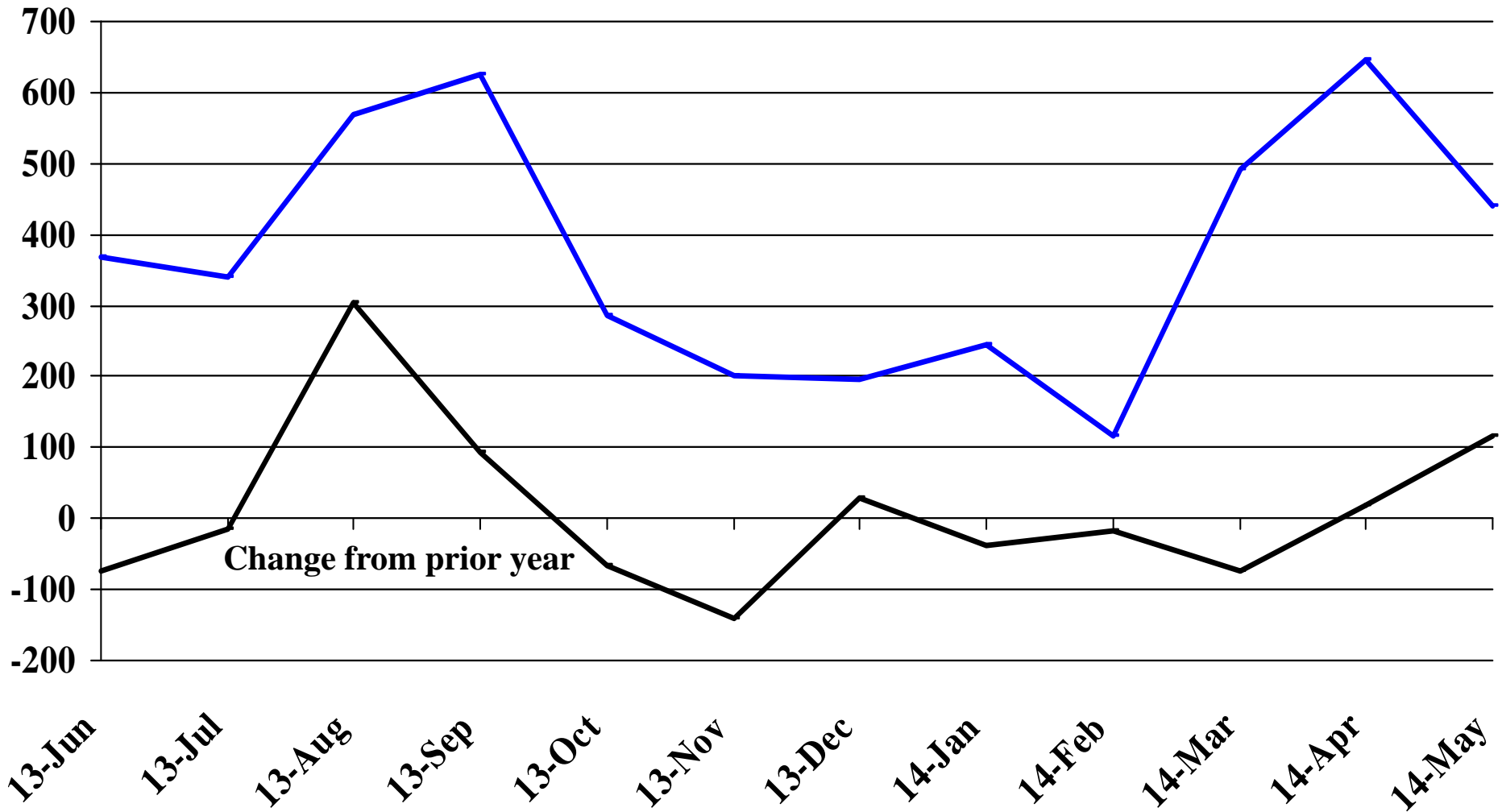


Recent Trends in Nonfarm Employment (excluding Government Employment)

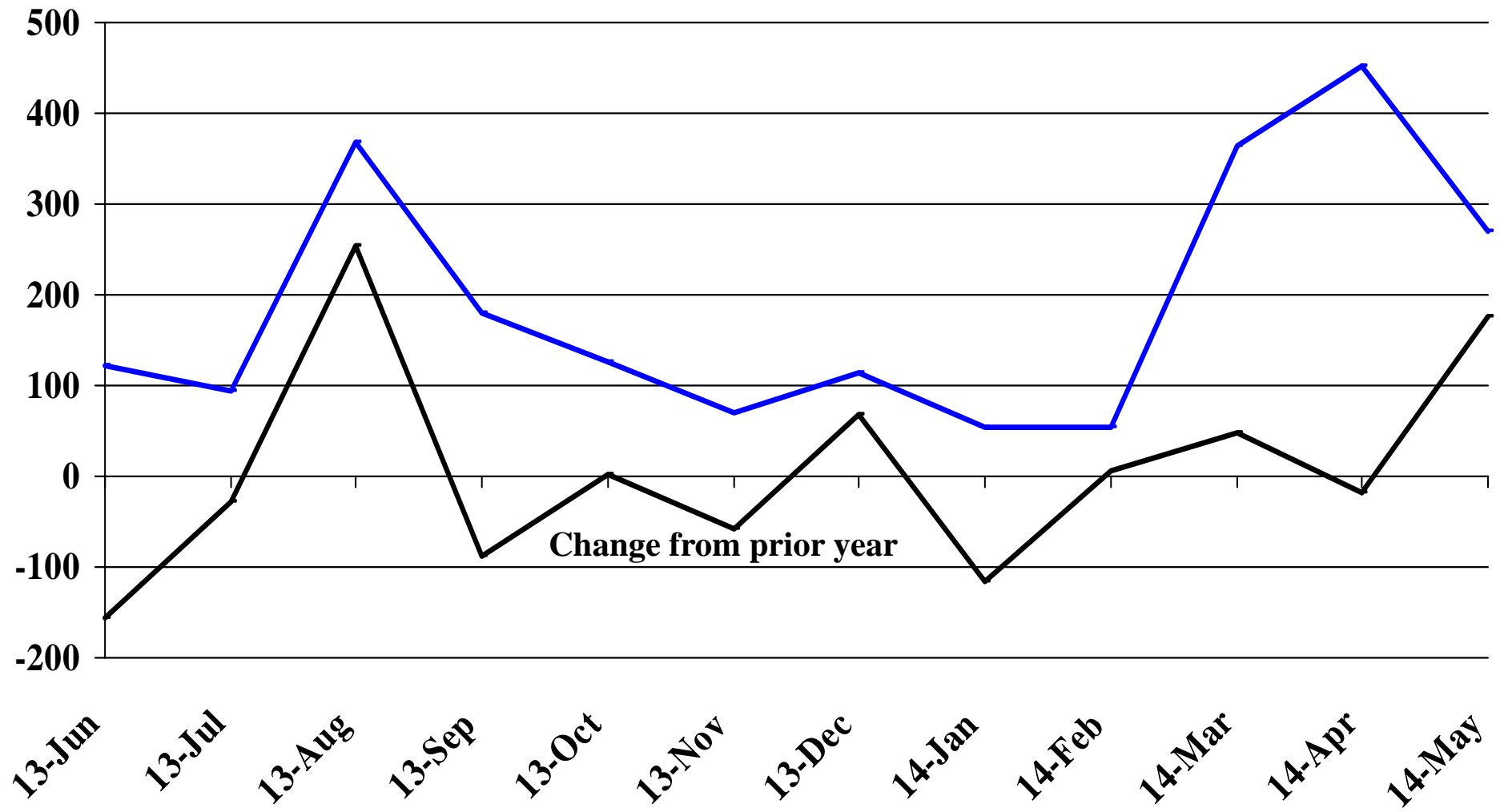
Percent Change



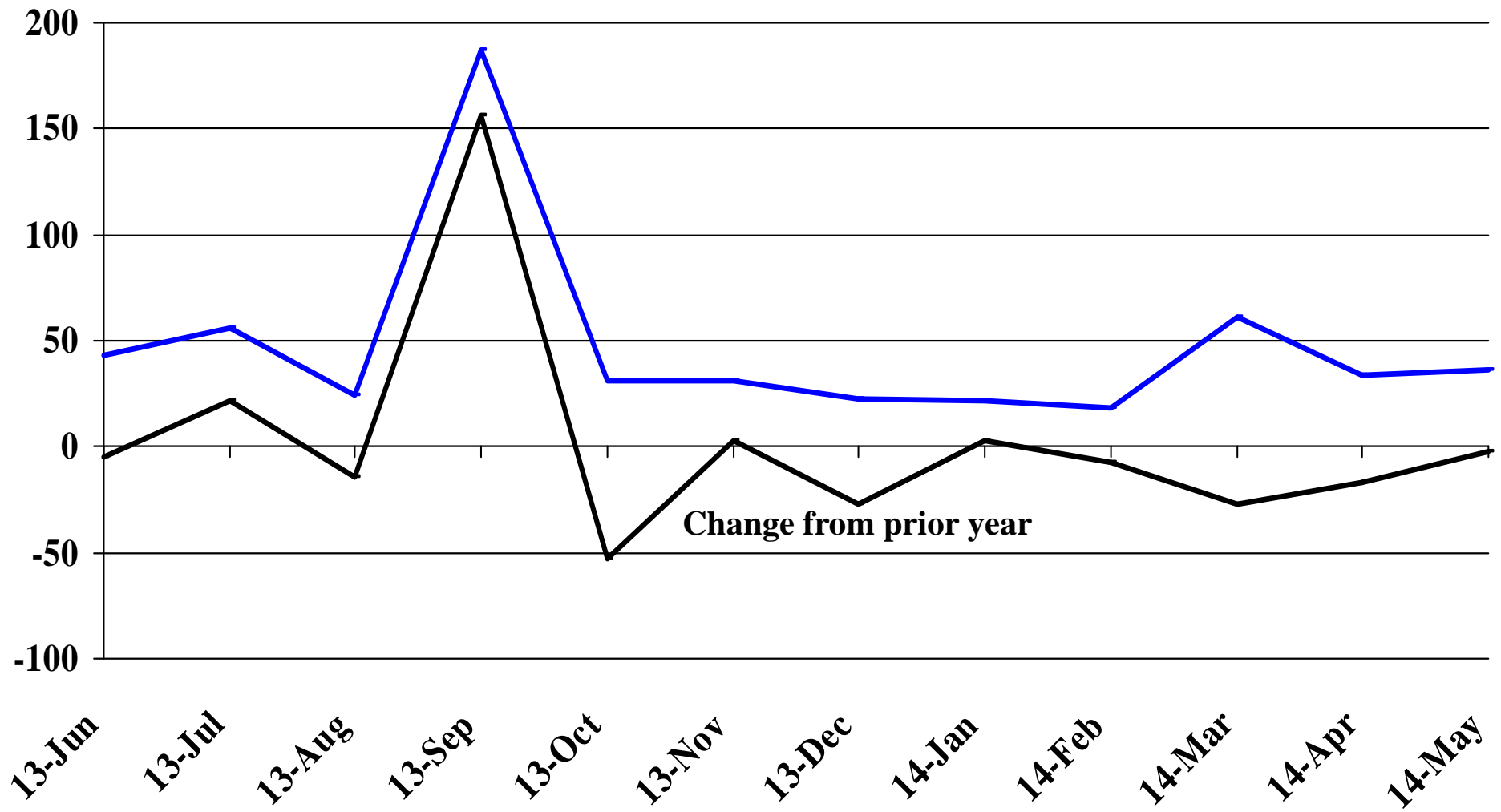
Recent Trends in the Number of Units Authorized by Residential Building Permits for South Dakota



Recent Trends in the Number of Residential Units Authorized by Building Permits for Minnehaha County

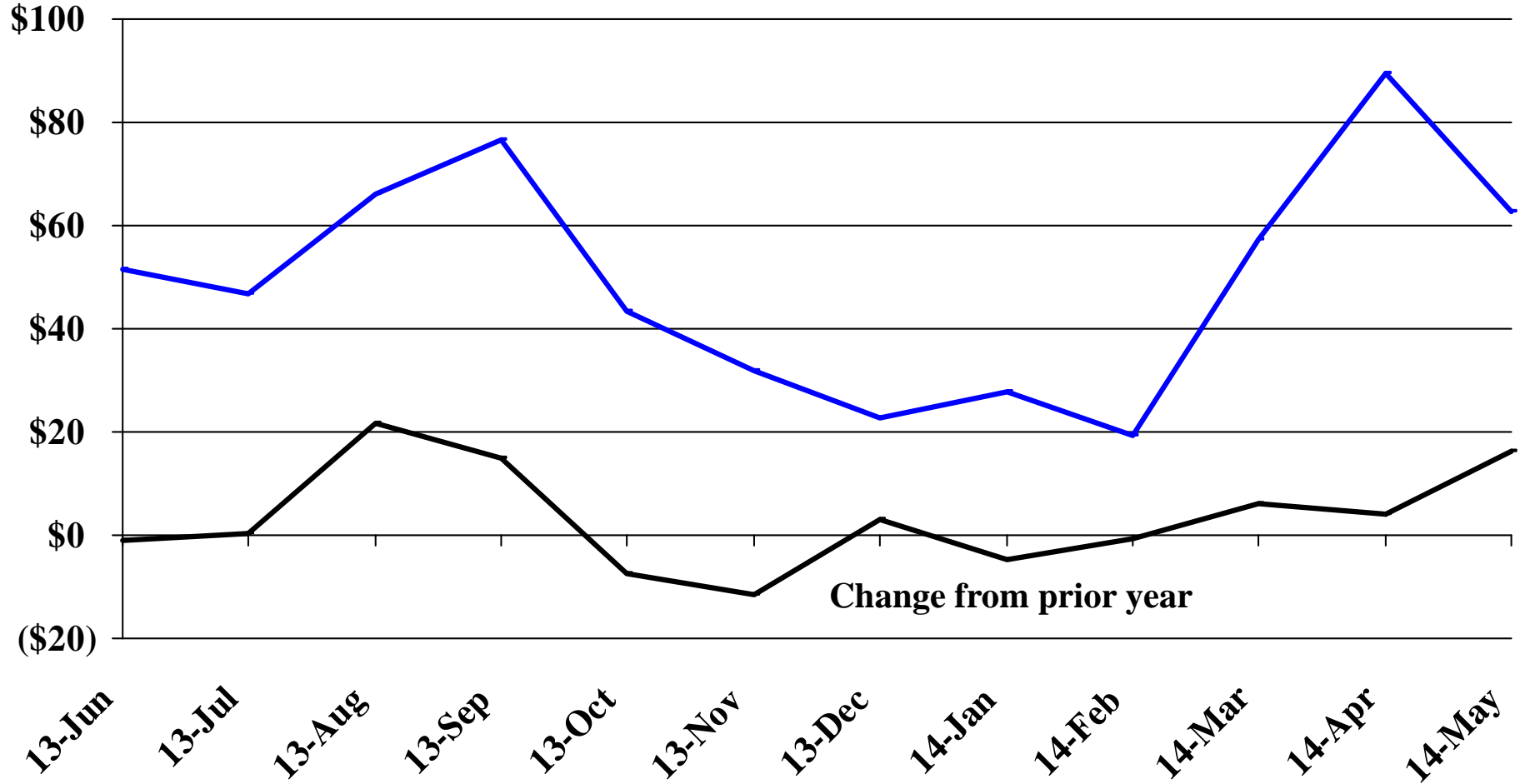


Recent Trends in the Number of Residential Units Authorized by Building Permits for Pennington County



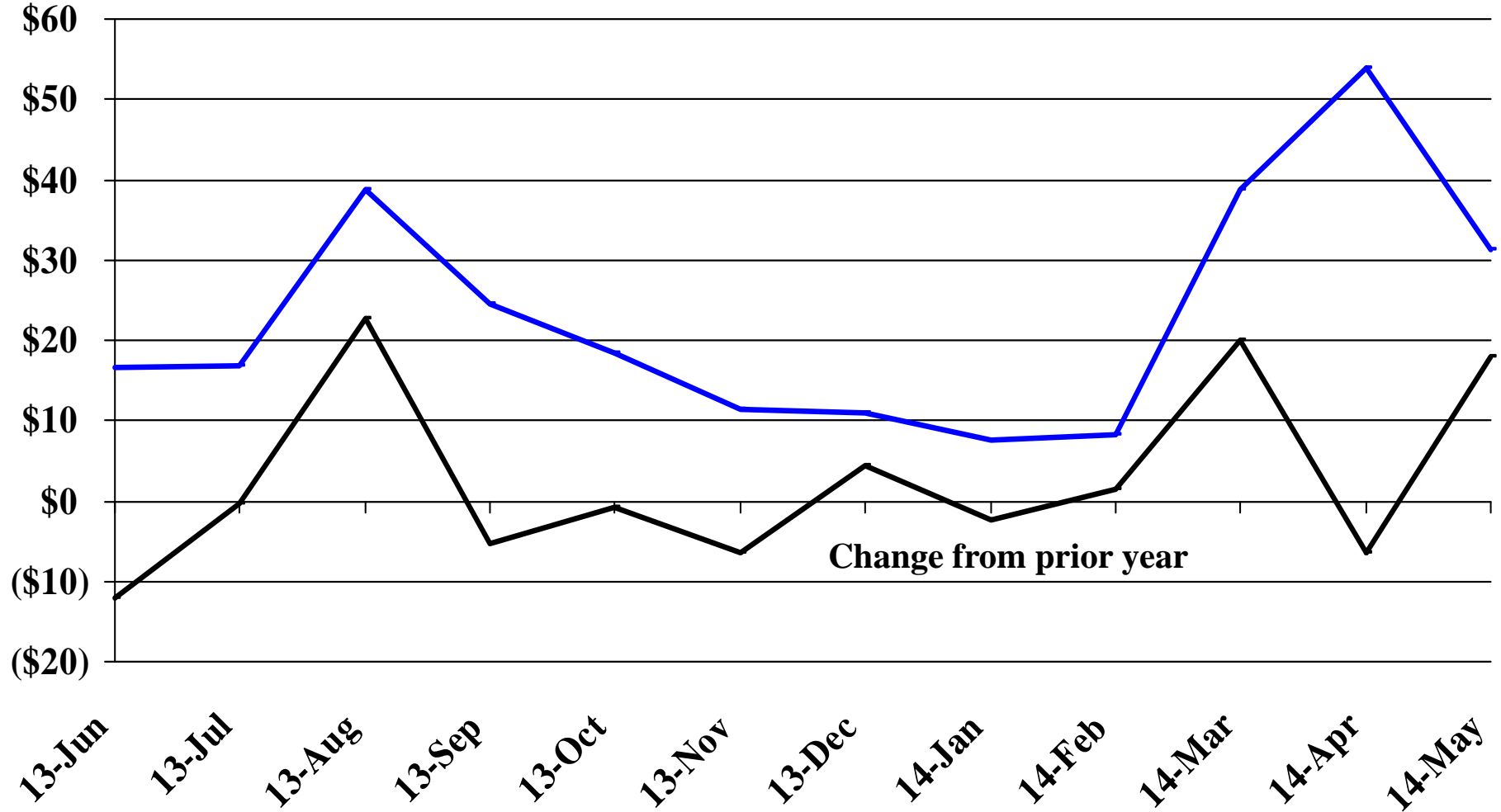
Recent Trends in the Value of Residential Building Permits Issued for South Dakota

Millions



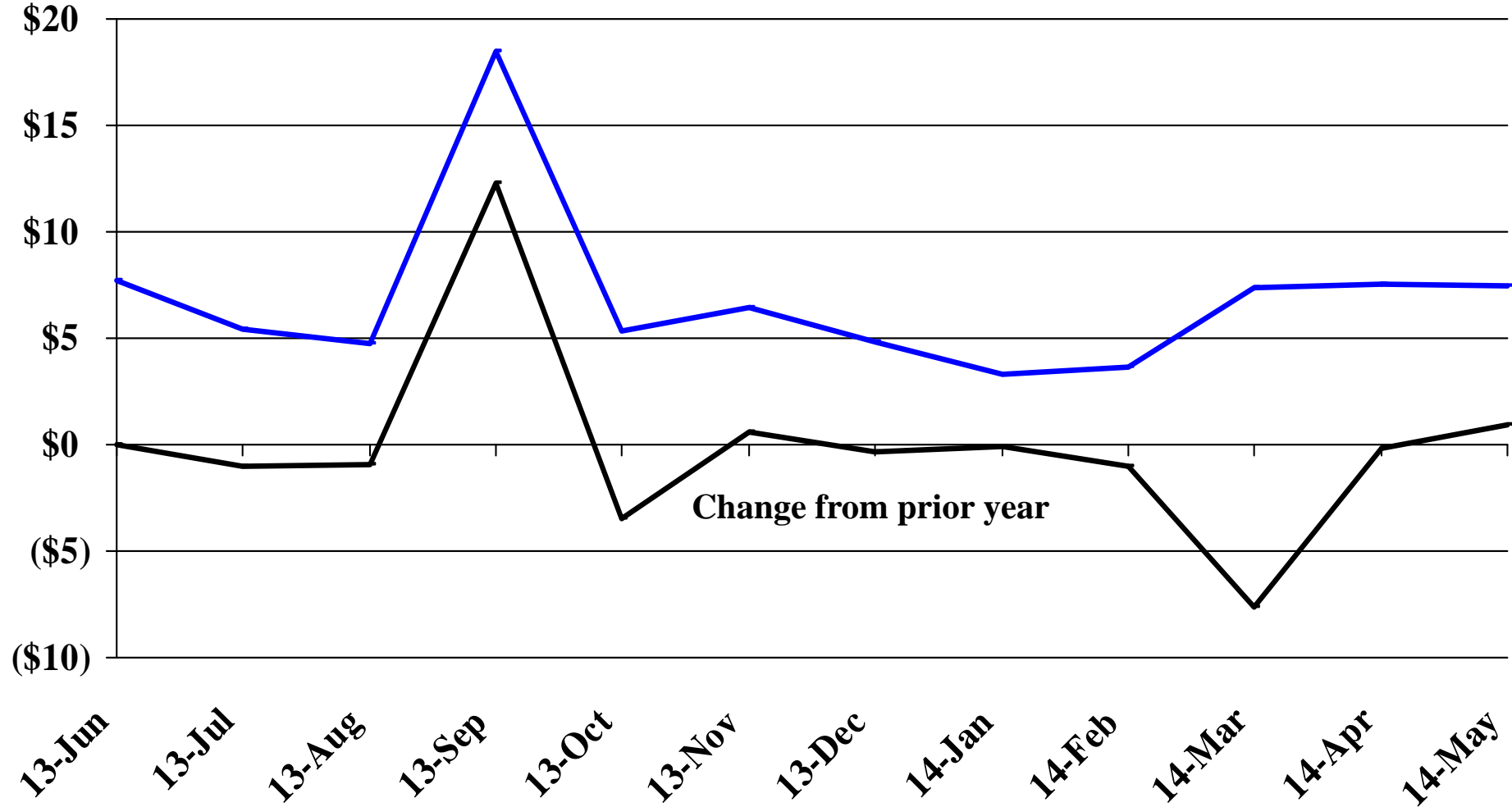
Recent Trends in the Value of Residential Building Permits Issued for Minnehaha County

Millions

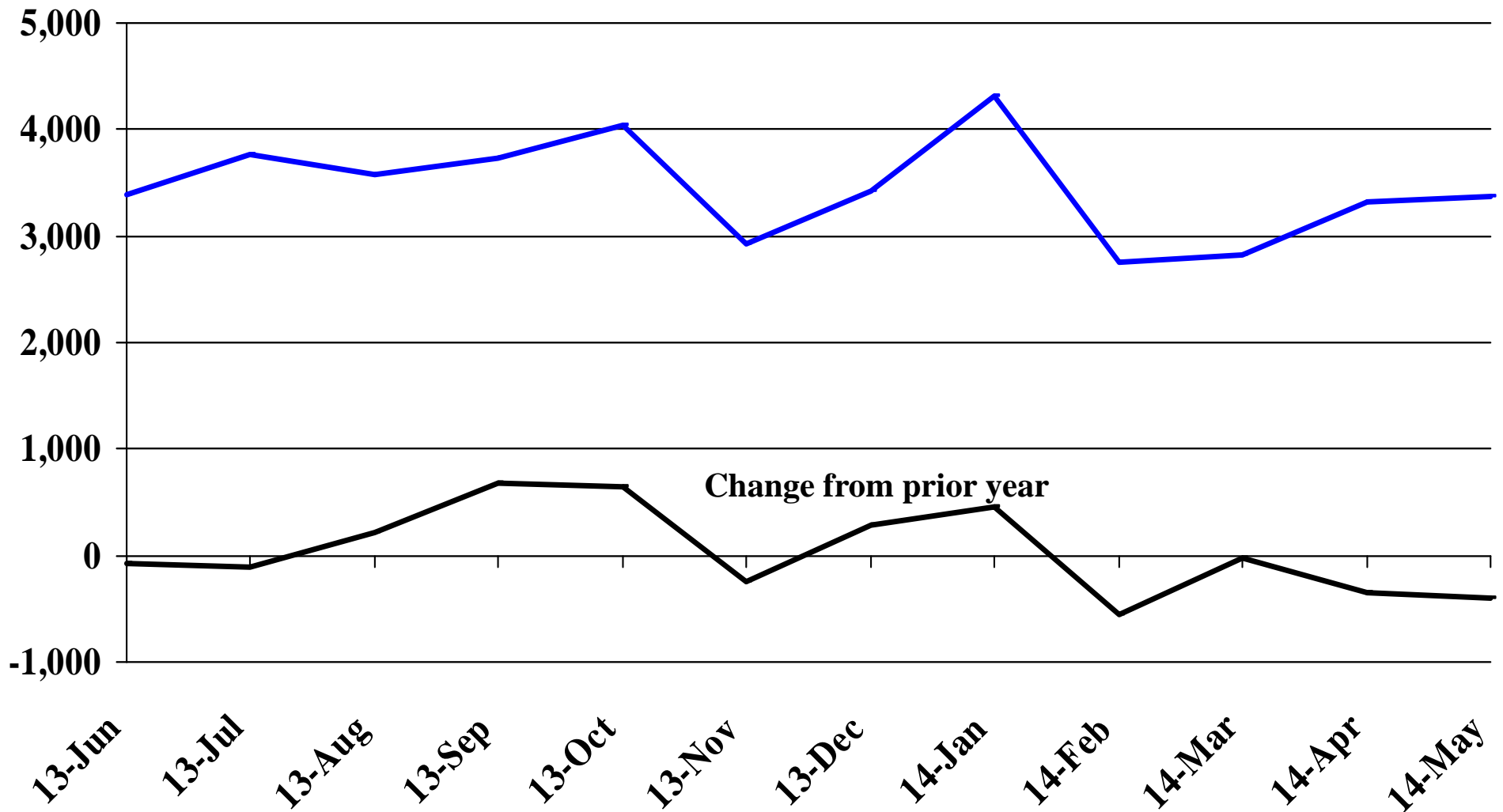


Recent Trends in the Value of Residential Building Permits Issued for Pennington County

Millions

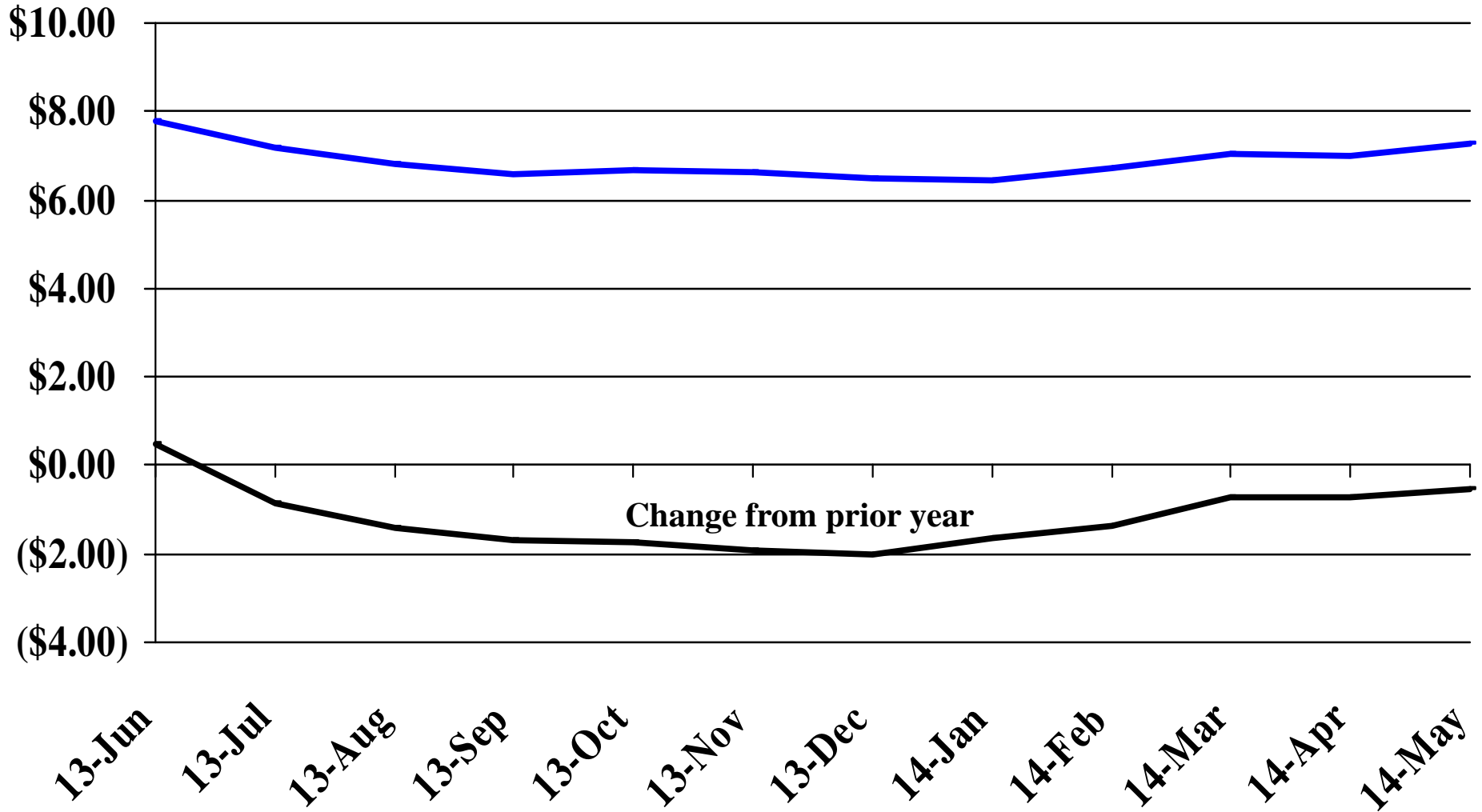


Recent Trends in the Number of New Non-Commercial Vehicles Titled



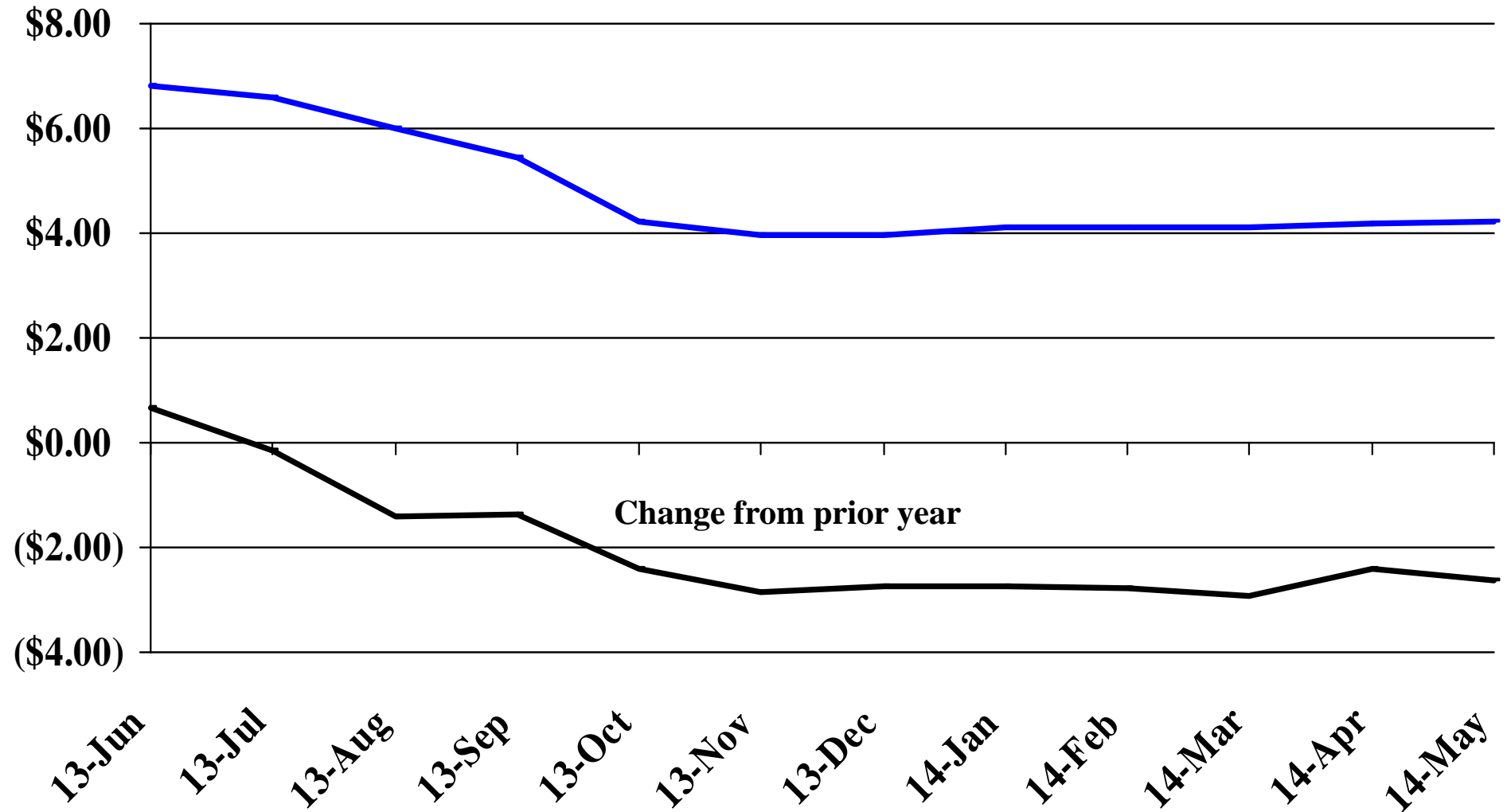
Recent Trends in the Price of Wheat

\$'s Per Bushel



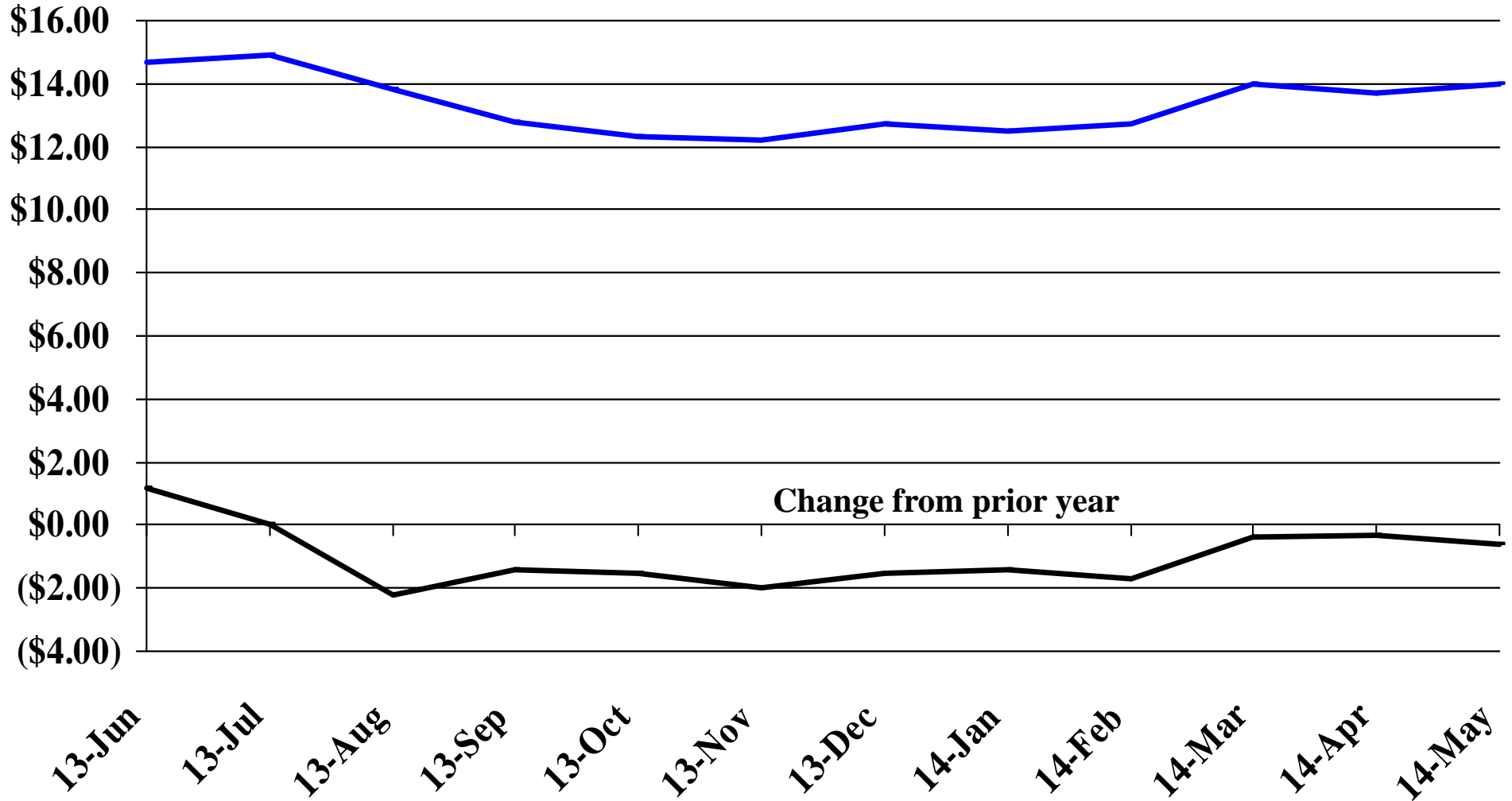
Recent Trends in the Price of Corn

\$'s Per Bushel



Recent Trends in the Price of Soybeans

\$'s Per Bushel



Recent Trends in the Price of Hay

