

# The South Dakota Economy

May 6, 2015

## Employment growth in South Dakota

- On an annual basis during 2014, South Dakota nonfarm employment levels were 5,700 jobs higher than 2013, or an increase of 1.4% after recent benchmark revisions.
- In March 2015, total SD nonfarm employment was up 7,000 jobs or 1.7%, compared to March 2014.
  - Sectors that are currently experiencing year-over-year growth (March '15 compared to March '14 levels) include: logging, mining, and construction (+7.3%); manufacturing (+3.3%); other services (+3.2%); trade, transportation, and utilities (+2.3%); education and health services (+2.2%); professional and business services (+0.7%); and government (+0.3%). The leisure/hospitality sector was unchanged compared to the prior year.
  - The only sector currently experiencing a year-over-year decline during March was financial activities (-1.3%).

## The unemployment rate continues to be one of the lowest in the nation

- The unemployment rate in South Dakota was the fourth lowest in the nation in March at 3.5%.
  - SD's unemployment rate in March was 0.1% higher than February and the same as a year ago.
- The US unemployment rate was 5.5% in March 2015.

## Income growth in South Dakota

- South Dakota's preliminary personal income in 2014 increased 1.7% compared to 2013. This compares to the US growth rate of 3.9% over the same time period.
  - In 2014, South Dakota's farm income decreased 20.7% compared to 2013, which was the primary reason for the soft growth rate in total personal income in 2014. South Dakota nonfarm income grew 3.9%, slightly less than the national average growth rate of 4.1% in 2014.
- South Dakota's per capita personal income in 2014 was \$46,345, which ranked 21<sup>st</sup> in the nation, and was 0.5% higher than the US per capita personal income of \$46,129 during 2014.
- In the fourth quarter of 2014, South Dakota's total personal income grew 3.0% year-over-year compared to the fourth quarter of 2013, lower than the US growth rate of 4.5% over the same time period. The lower growth rate is primarily due to a 13.0% decrease in SD farm income compared to the prior fourth quarter. SD's nonfarm income in the fourth quarter grew 4.4% year-over-year, slightly less than the US growth rate of 4.6%.

## The housing market

- In the last twelve months (April 2014 – March 2015) there were 303 less total family housing units authorized by building permits in South Dakota than there were the same period before.\*
- The value of total family housing building permits is \$7.88 million higher in the last twelve months compared to the same period the year before.\*

## The agricultural economy

- As of April 1<sup>st</sup>, South Dakota's 1,000+ capacity feedlots reported 235,000 cattle on feed for the slaughter market, which was up 4% from a year ago.
- Milk production in South Dakota during March of 2015 totaled 194 million pounds, up 10% from the same month a year ago. The average number of milk cows was 102,000 head, up 6,000 head compared to March of 2014.
- As of April 26<sup>th</sup>, Cattle and calf conditions were rated 100% fair to excellent with calving progress at 78% complete.
- As of April 26<sup>th</sup>, topsoil moisture supplies across the state were rated 69% short to very short while subsoil moisture supplies were rated 67% short to very short.
- Crop prices received by South Dakota farmers continue to be lower than a year ago. In March, corn prices received were \$3.44/bushel, down \$0.66/bushel compared to a year ago; soybean prices were \$9.22/bushel, down \$4.78 from a year ago; wheat prices were \$5.45/bushel, down \$1.60 compared to a year ago; and, hay prices were \$109/ton, down \$14/ton from a year ago.

\* Building permit statistics are from monthly reporting places only.

**Economic Indicators for the State of South Dakota for the latest 12 Month Period**

Category	Time Period												12 Month Avg/Total
	Apr-14	May-14	Jun-14	Jul-14	Aug-14	Sep-14	Oct-14	Nov-14	Dec-14	Jan-15	Feb-15	Mar-15	
<b>Nonfarm Employment Data (information is seasonally adjusted by BLS and expressed in thousands)</b>													
<b>Total Nonfarm</b>	422.80	423.00	423.30	424.00	424.00	424.40	424.90	423.90	424.70	425.00	427.60	429.20	424.73
change from prior year	7.80	5.80	5.90	6.90	6.60	6.10	5.60	3.50	4.00	3.00	5.20	7.00	5.62
% change from prior year	1.88	1.39	1.41	1.65	1.58	1.46	1.34	0.83	0.95	0.71	1.23	1.66	1.34
<b>N.R., Mining &amp; Const.</b>	22.00	22.00	22.10	22.10	22.10	22.30	22.20	22.00	22.50	22.90	23.50	23.60	22.44
change from prior year	1.40	0.80	0.80	0.50	0.40	0.60	0.60	0.00	0.70	0.70	1.40	1.60	0.79
% change from prior year	6.80	3.77	3.76	2.31	1.84	2.76	2.78	0.00	3.21	3.15	6.33	7.27	3.66
<b>Manufacturing Employment</b>	42.10	42.00	42.10	42.30	42.60	42.60	42.70	42.90	43.20	43.60	43.50	43.30	42.74
change from prior year	0.60	0.50	0.40	0.90	1.10	1.30	1.30	1.50	1.70	2.00	1.80	1.40	1.21
% change from prior year	1.45	1.20	0.96	2.17	2.65	3.15	3.14	3.62	4.10	4.81	4.32	3.34	2.91
<b>Trade, Transp., &amp; Utilities</b>	85.60	85.50	85.80	86.30	86.40	86.20	85.80	85.40	85.90	86.50	86.80	87.30	86.13
change from prior year	2.40	1.70	2.00	2.50	2.80	2.40	1.60	1.10	1.30	1.60	1.50	2.00	1.91
% change from prior year	2.88	2.03	2.39	2.98	3.35	2.86	1.90	1.30	1.54	1.88	1.76	2.34	2.27
<b>Financial Activities</b>	29.70	29.60	29.50	29.60	29.60	29.60	29.40	29.60	29.50	29.50	29.20	29.40	29.52
change from prior year	0.20	-	(0.30)	(0.20)	(0.20)	(0.30)	(0.50)	(0.40)	(0.50)	(0.40)	(0.60)	(0.40)	(0.30)
% change from prior year	0.68	-	(1.01)	(0.67)	(0.67)	(1.00)	(1.67)	(1.33)	(1.67)	(1.34)	(2.01)	(1.34)	(1.01)
<b>Prof. and Business Services</b>	30.30	30.40	30.40	30.40	30.10	30.00	30.10	29.90	29.90	30.20	30.00	30.20	30.16
change from prior year	1.20	1.10	1.10	1.20	0.90	0.70	(0.10)	(0.40)	(0.40)	(0.10)	(0.20)	0.20	0.43
% change from prior year	4.12	3.75	3.75	4.11	3.08	2.39	(0.33)	(1.32)	(1.32)	(0.33)	(0.66)	0.67	1.46
<b>Educ. &amp; Health Services</b>	68.30	68.30	68.40	68.40	68.40	68.30	68.70	68.70	68.60	68.70	69.60	69.80	68.68
change from prior year	0.30	0.20	0.40	0.40	0.40	0.30	0.60	0.70	0.50	0.50	1.30	1.50	0.59
% change from prior year	0.44	0.29	0.59	0.59	0.59	0.44	0.88	1.03	0.73	0.73	1.90	2.20	0.87
<b>Leisure &amp; Hospitality</b>	45.30	45.50	45.10	45.00	45.10	45.50	45.90	45.30	45.00	44.50	45.40	45.40	45.25
change from prior year	1.30	0.90	0.40	0.20	0.40	0.80	1.00	0.20	(0.10)	(1.00)	(0.10)	0.00	0.33
% change from prior year	2.95	2.02	0.89	0.45	0.89	1.79	2.23	0.44	(0.22)	(2.20)	(0.22)	0.00	0.74
<b>Other Services</b>	15.80	15.80	15.80	15.90	15.80	15.80	15.70	15.80	16.00	15.70	16.00	16.30	15.87
change from prior year	(0.20)	(0.10)	(0.10)	0.00	0.00	(0.10)	(0.10)	(0.10)	0.20	(0.10)	0.30	0.50	0.02
% change from prior year	(1.25)	(0.63)	(0.63)	0.00	0.00	(0.63)	(0.63)	(0.63)	1.27	(0.63)	1.91	3.16	0.11
<b>Government</b>	77.60	77.80	78.00	77.90	77.90	78.10	78.40	78.20	78.00	77.40	77.60	77.80	77.89
change from prior year	0.60	0.60	1.10	1.30	0.80	0.40	1.10	0.80	0.50	(0.10)	(0.10)	0.20	0.60
% change from prior year	0.78	0.78	1.43	1.70	1.04	0.51	1.42	1.03	0.65	(0.13)	(0.13)	0.26	0.78
<b>NonFarm (excluding Govt.)</b>	345.2	345.2	345.3	346.1	346.1	346.3	346.5	345.7	346.7	347.6	350.0	351.4	346.84
change from prior year	7.2	5.2	4.8	5.6	5.8	5.7	4.5	2.7	3.5	3.1	5.3	6.8	5.02
% change from prior year	2.13	1.53	1.41	1.64	1.70	1.67	1.32	0.79	1.02	0.90	1.54	1.97	1.47

**Economic Indicators for the State of South Dakota for the latest 12 Month Period**

Category	Time Period												12 Month Avg/Total
	Apr-14	May-14	Jun-14	Jul-14	Aug-14	Sep-14	Oct-14	Nov-14	Dec-14	Jan-15	Feb-15	Mar-15	
<b>Number of Housing Units Authorized by Building Permits (information is not seasonally adjusted)*</b>													
<b>One-Family Units - S.D. Total</b>	308	234	257	242	203	244	239	107	107	90	119	239	2,389
change from prior year	(127)	4	33	(4)	(1)	(20)	22	(72)	24	14	44	81	(2)
<b>Total Family Units - S.D. Total</b>	646	440	311	310	343	265	450	110	468	133	206	404	4,086
change from prior year	18	116	(58)	(29)	(227)	(360)	165	(90)	273	(113)	90	(88)	(303)
<b>Total Family Units - Minnehaha Co.</b>	452	271	120	124	137	105	43	43	295	90	140	178	1,998
change from prior year	(18)	177	(2)	30	(231)	(75)	(83)	(28)	180	36	86	(187)	(115)
<b>Total Family Units - Pennington Co.</b>	34	36	38	36	26	28	14	14	115	14	39	132	526
change from prior year	(17)	(2)	(5)	(20)	2	(159)	(17)	(17)	92	(8)	21	71	(59)
<b>Value of Building Permits Issued (information is not seasonally adjusted and is expressed in millions of dollars)*</b>													
<b>One-Family units - S.D. Total</b>	59.79	44.87	47.33	47.43	37.56	42.78	28.04	22.39	21.33	15.93	22.37	42.36	432.18
change from prior year	(9.81)	5.01	6.01	5.86	0.50	(3.65)	(9.74)	(6.39)	6.01	1.84	6.49	12.15	14.28
<b>Total Family units - S.D. Total</b>	89.51	62.76	52.75	53.38	49.23	44.36	46.28	22.64	55.45	19.54	29.83	58.24	583.97
change from prior year	3.95	16.42	1.10	6.57	(17.00)	(32.28)	2.96	(9.34)	32.63	(8.40)	10.42	0.84	7.88
<b>Total Family Units - Minnehaha Co.</b>	53.86	31.32	19.76	21.07	21.41	18.60	8.33	8.33	31.49	10.47	16.09	22.79	263.51
change from prior year	(6.49)	17.97	3.12	4.31	(17.35)	(5.87)	(10.07)	(3.04)	20.53	2.97	7.84	(16.06)	(2.16)
<b>Total Family Units - Pennington Co.</b>	7.53	7.49	6.75	7.01	5.11	5.82	3.52	3.52	12.78	3.05	8.15	18.28	89.02
change from prior year	(0.17)	0.97	(0.93)	1.57	0.38	(12.67)	(1.79)	(2.97)	7.93	(0.24)	4.52	10.90	7.52

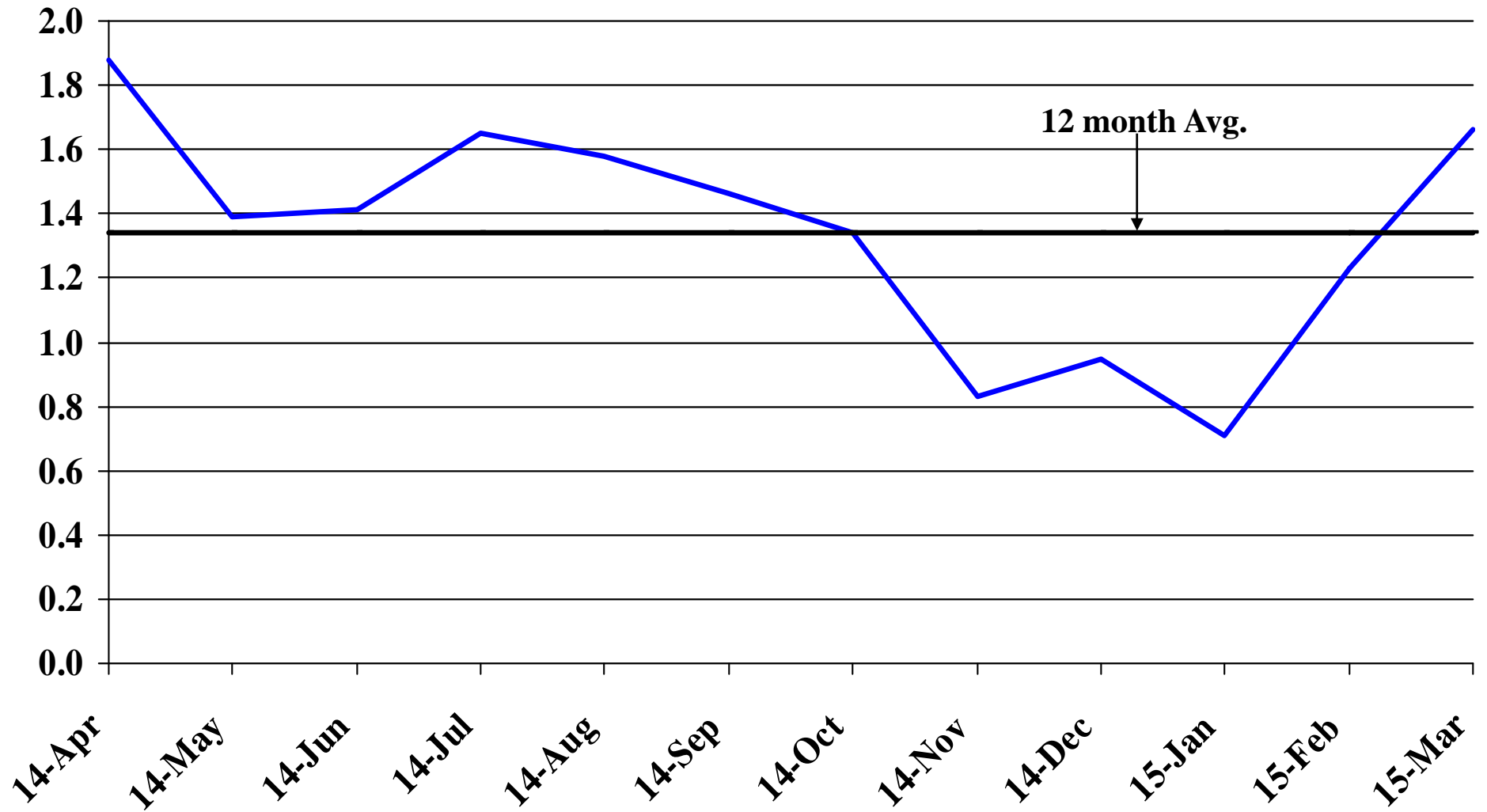
<b>Automobile Data (information is not seasonally adjusted)</b>													
<b>New Non-Comm. Veh. Titled</b>	3,323	3,365	4,877	2,698	4,174	2,171	5,920	1,830	2,803	3,748	3,556	2,716	41,181
change from prior year	(351)	(397)	1,481	(1,069)	593	(1,569)	1,873	(1,093)	(618)	(566)	810	(113)	(1,019)

<b>Agriculture (information is not seasonally adjusted)</b>													
<b>Wheat</b>	6.99	7.26	6.83	6.33	5.64	5.30	5.35	5.62	5.87	5.68	5.45	5.45	5.98
change from prior year	(0.70)	(0.53)	(0.94)	(0.85)	(1.19)	(1.30)	(1.34)	(1.00)	(0.61)	(0.78)	(1.25)	(1.60)	(1.01)
<b>Corn</b>	4.19	4.24	4.06	3.67	3.13	2.91	3.09	3.24	3.43	3.41	3.43	3.44	3.52
change from prior year	(2.40)	(2.64)	(2.74)	(2.91)	(2.86)	(2.55)	(1.13)	(0.74)	(0.53)	(0.70)	(0.67)	(0.66)	(1.71)
<b>Soybeans</b>	13.70	14.00	13.90	12.70	11.80	9.98	9.24	9.52	9.87	9.79	9.30	9.22	11.09
change from prior year	(0.30)	(0.60)	(0.80)	(2.20)	(2.00)	(2.82)	(3.06)	(2.68)	(2.83)	(2.71)	(3.40)	(4.78)	(2.35)
<b>Hay</b>	127.00	131.00	126.00	117.00	116.00	109.00	113.00	111.00	113.00	109.00	108.00	109.00	115.75
change from prior year	(95.00)	(108.00)	(95.00)	(61.00)	(43.00)	(19.00)	(46.00)	(37.00)	(26.00)	(26.00)	(18.00)	(14.00)	(49.00)

\* Housing permit statistics are from monthly reporting places only.

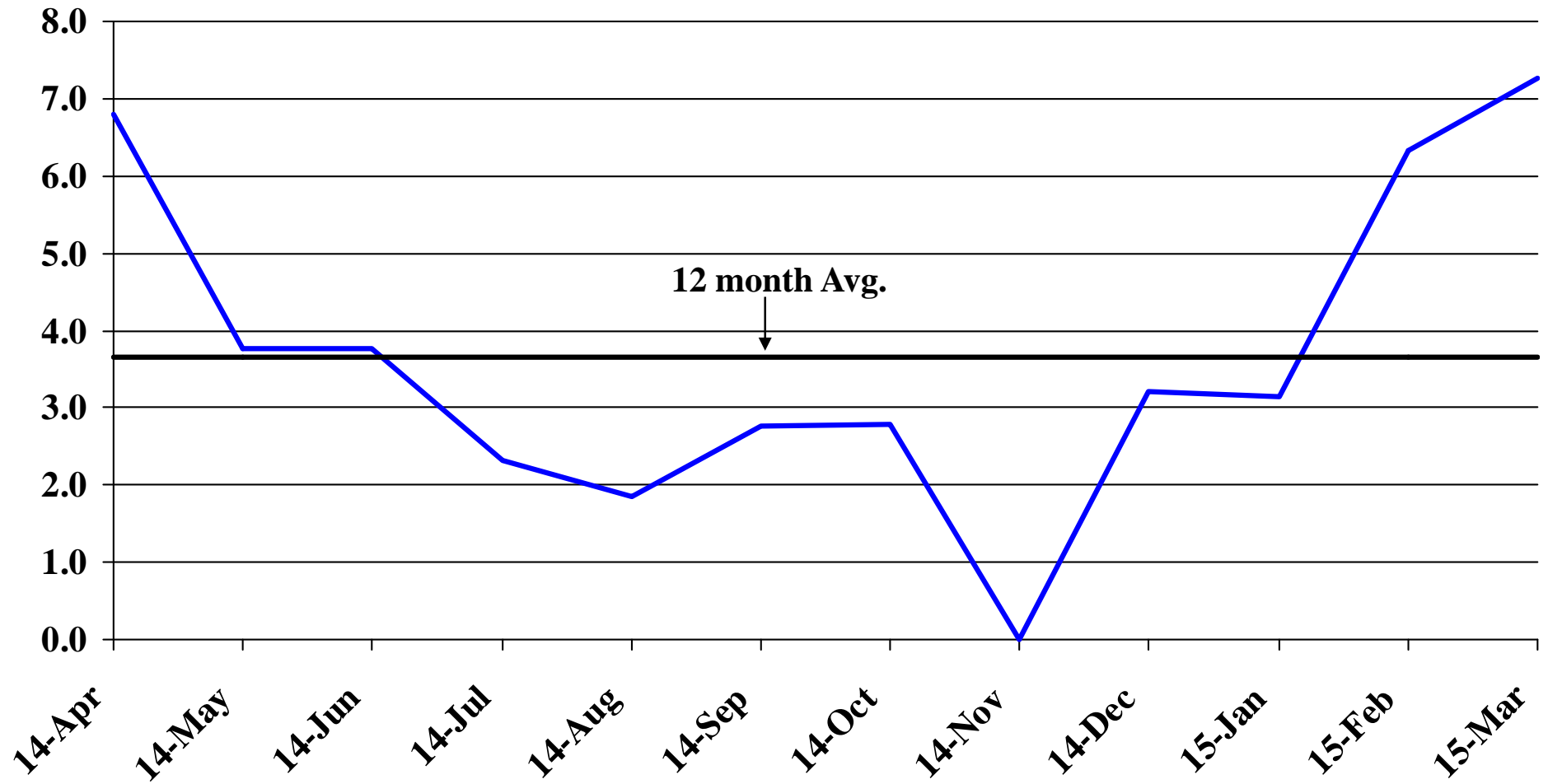
# Recent Trends in Nonfarm Employment

Percent Change



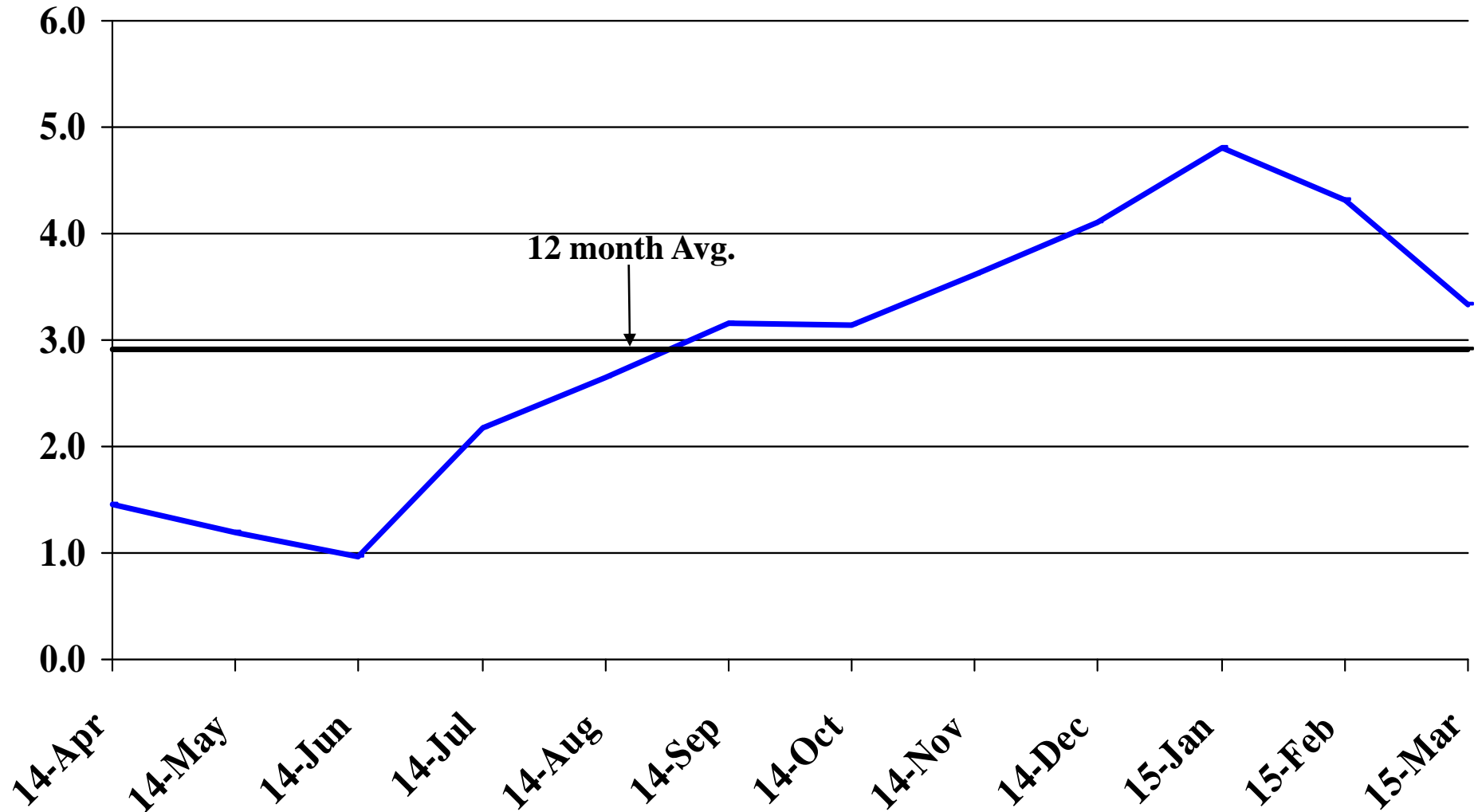
# Recent Trends in Natural Resources, Mining and Construction Employment

Percent Change



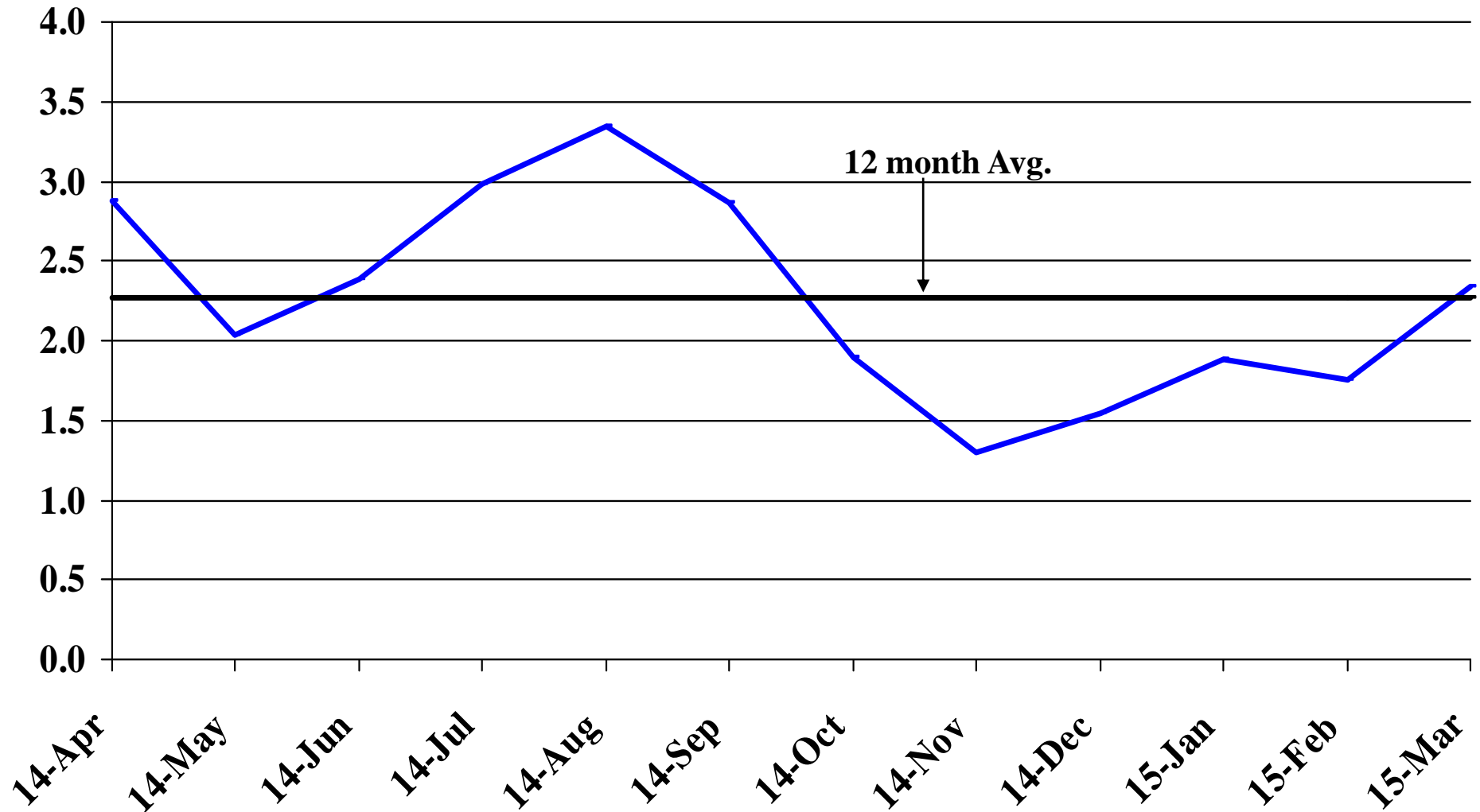
# Recent Trends in Manufacturing Employment

Percent Change



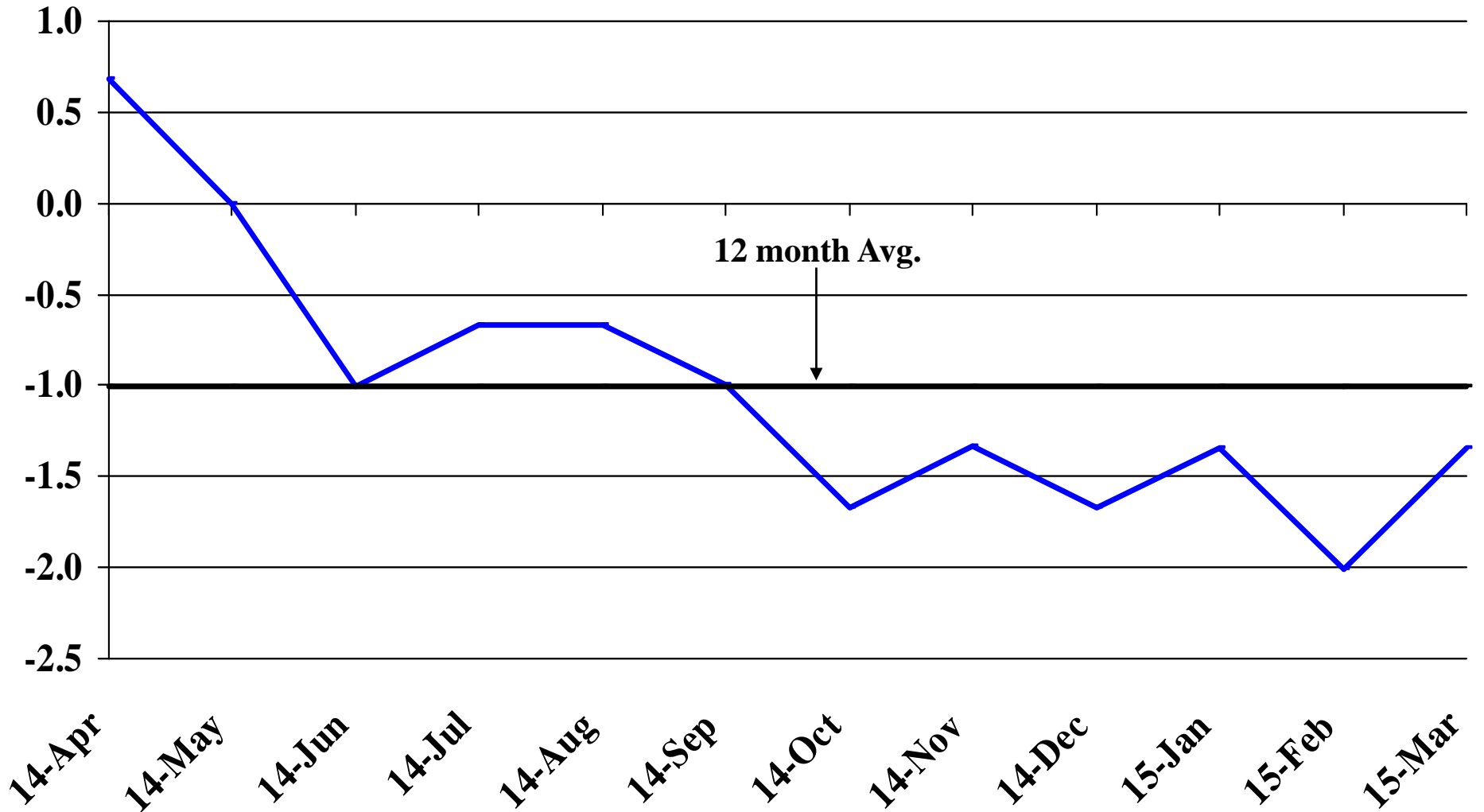
# Recent Trends in Trade, Transportation, and Utilities Employment

Percent Change



# Recent Trends in Financial Activities Employment

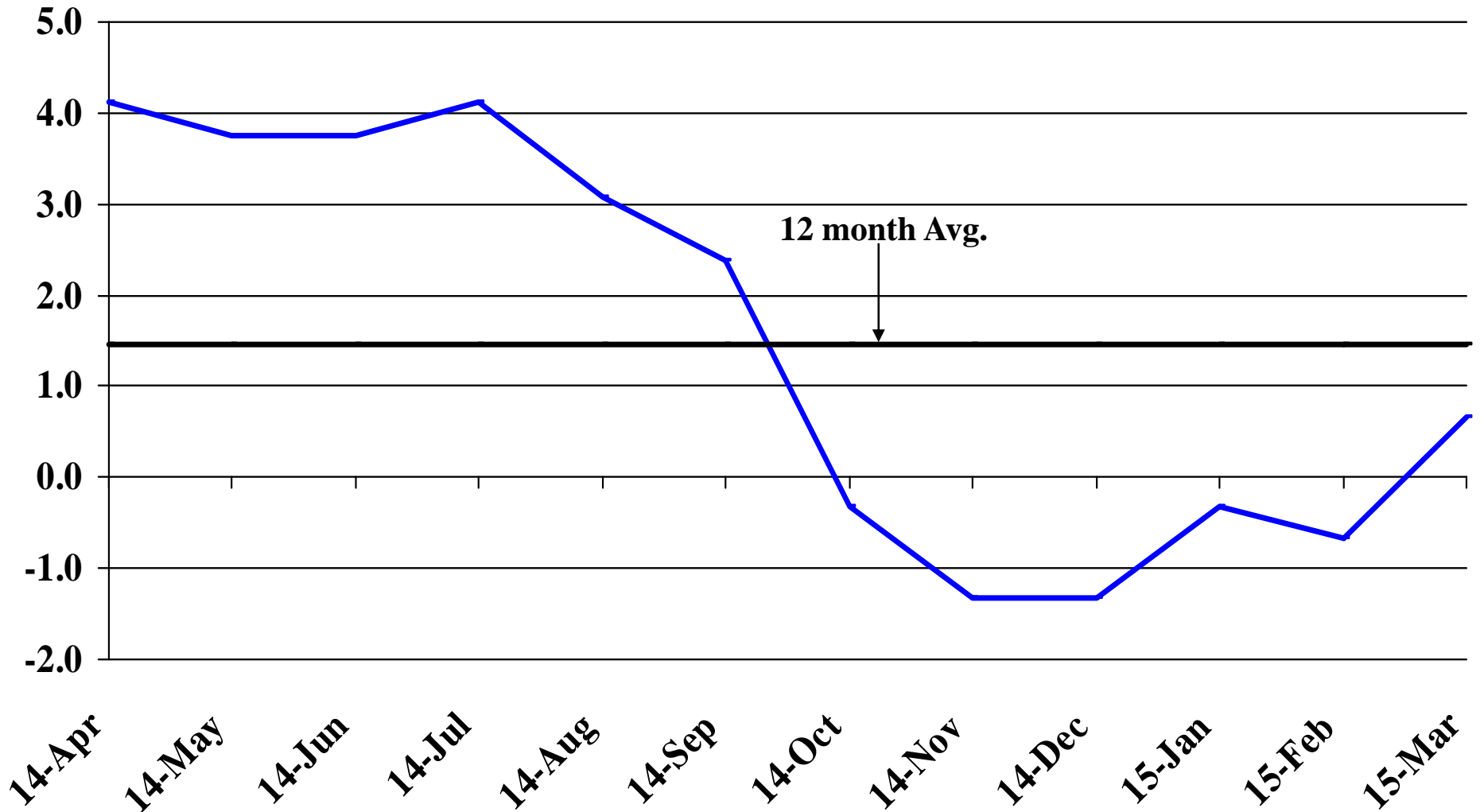
Percent Change





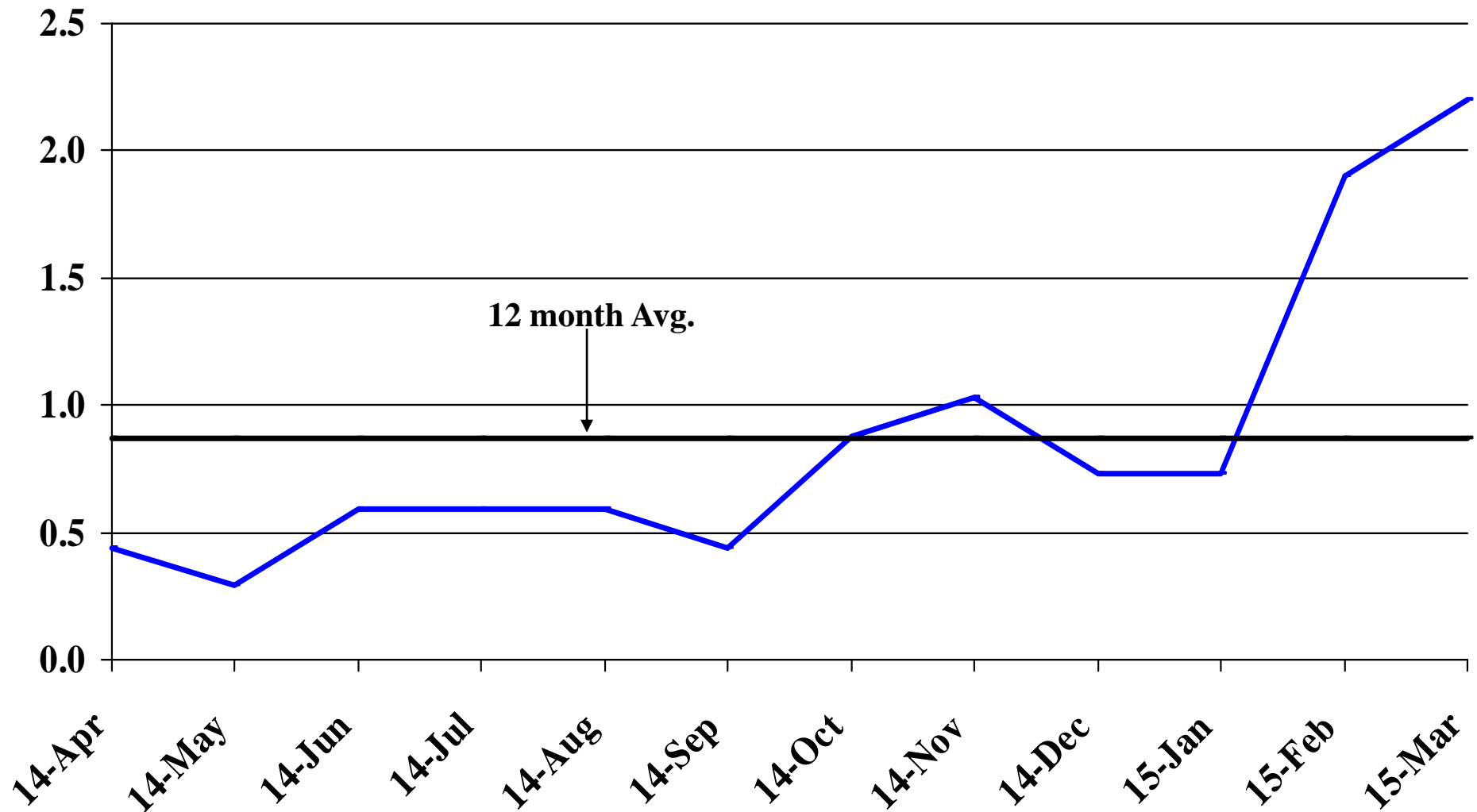
# Recent Trends in Professional and Business Services Employment

Percent Change



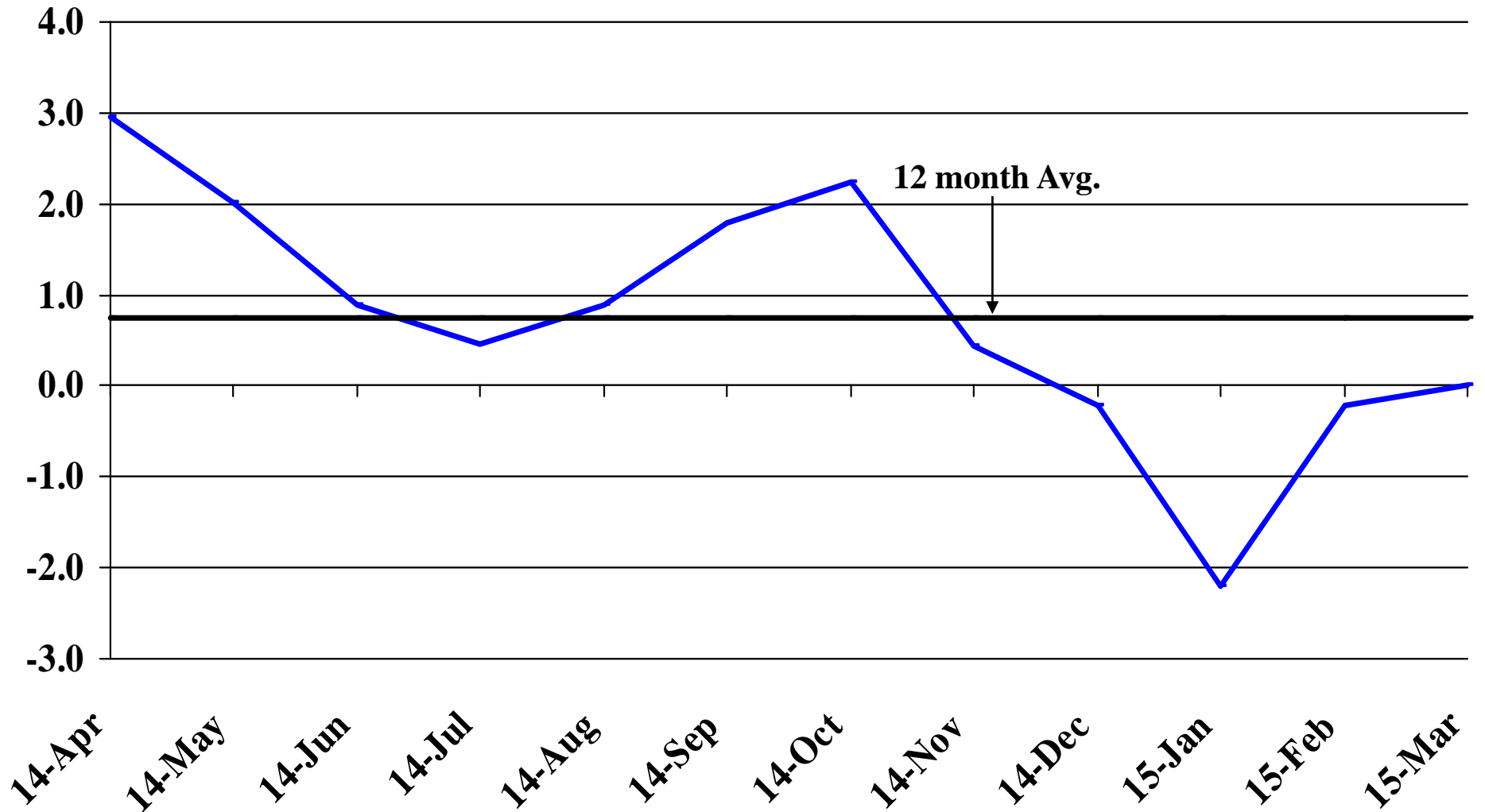
# Recent Trends in Educational and Health Services Employment

Percent Change



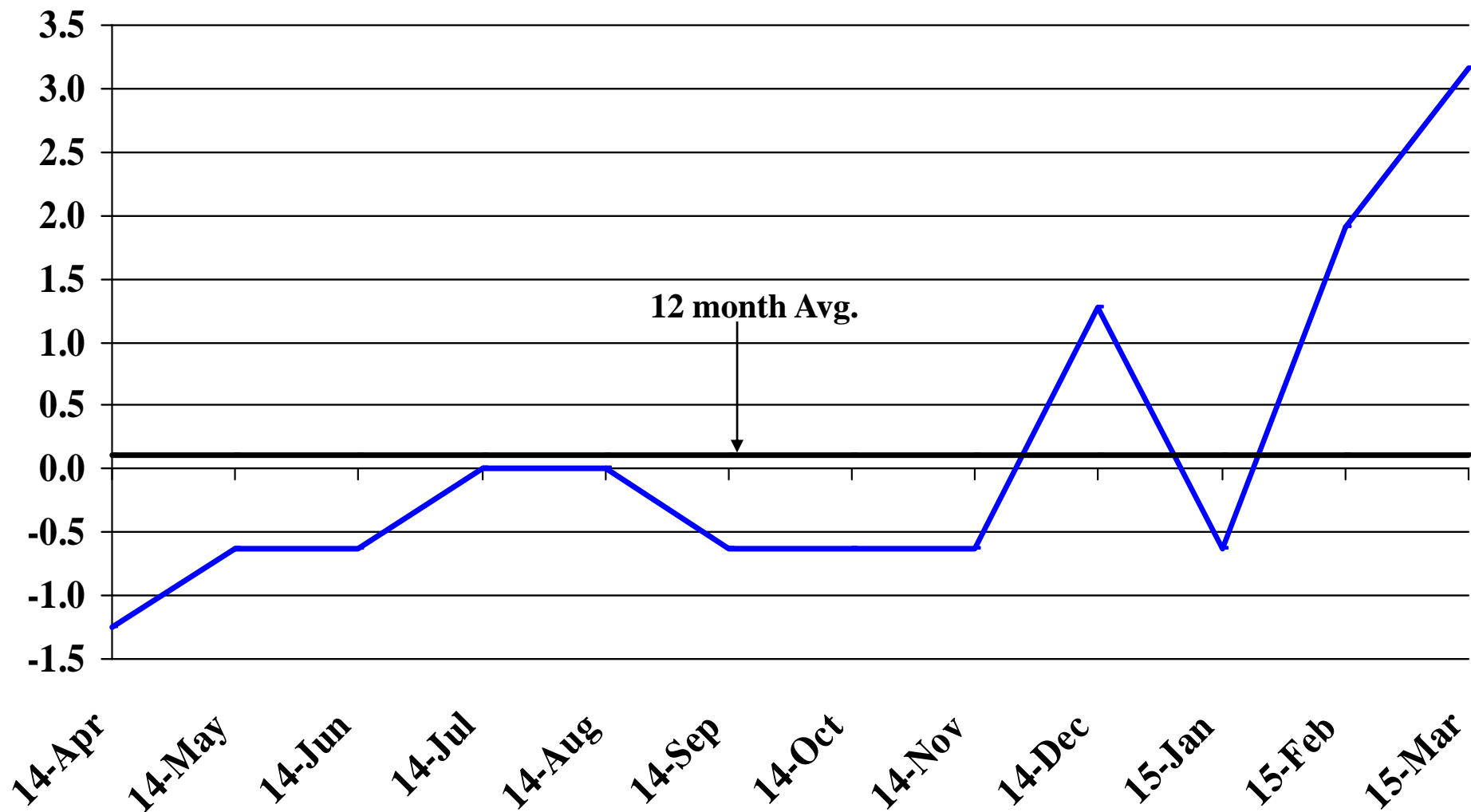
# Recent Trends in Leisure and Hospitality Employment

Percent Change



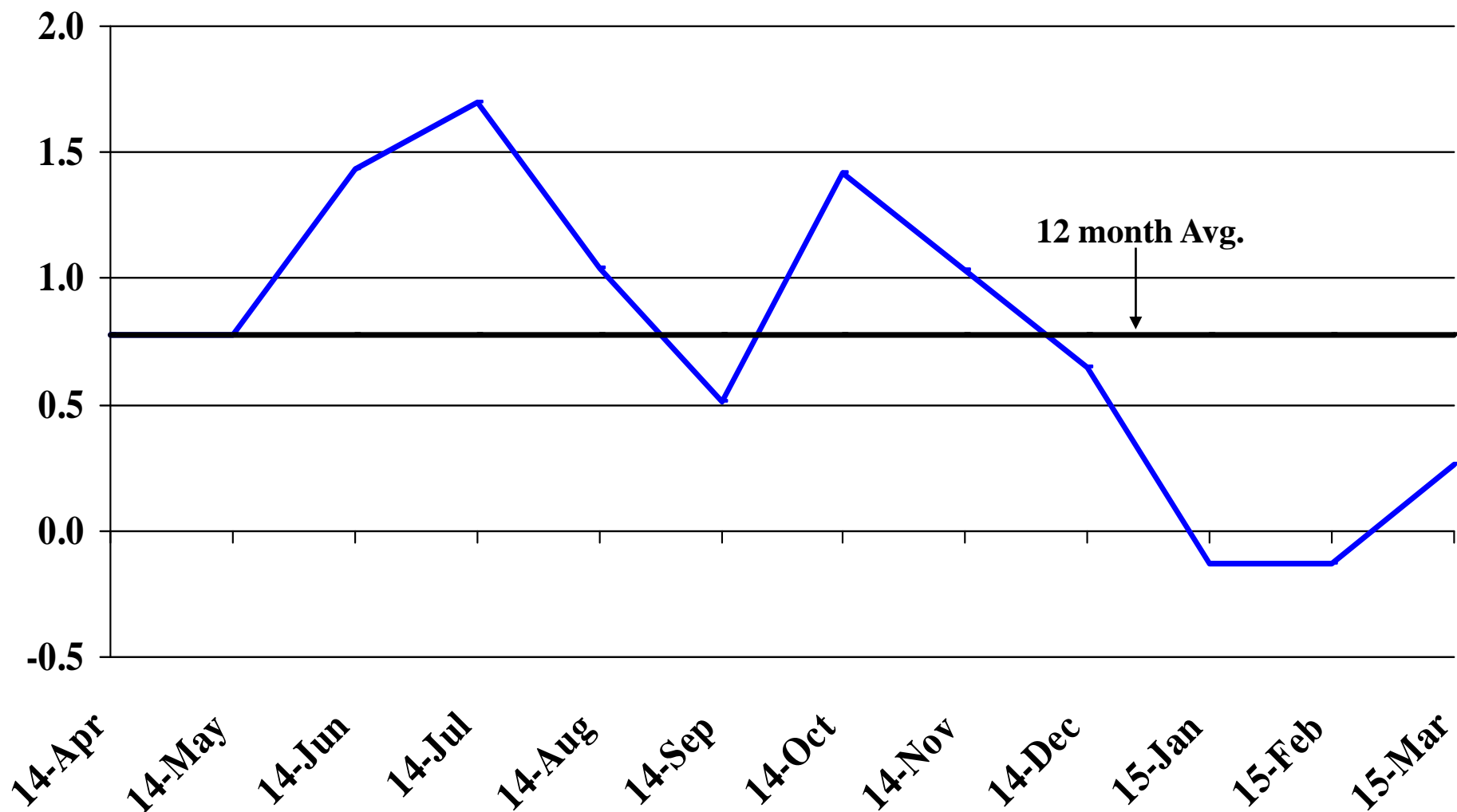
# Recent Trends in Other Services Employment

Percent Change



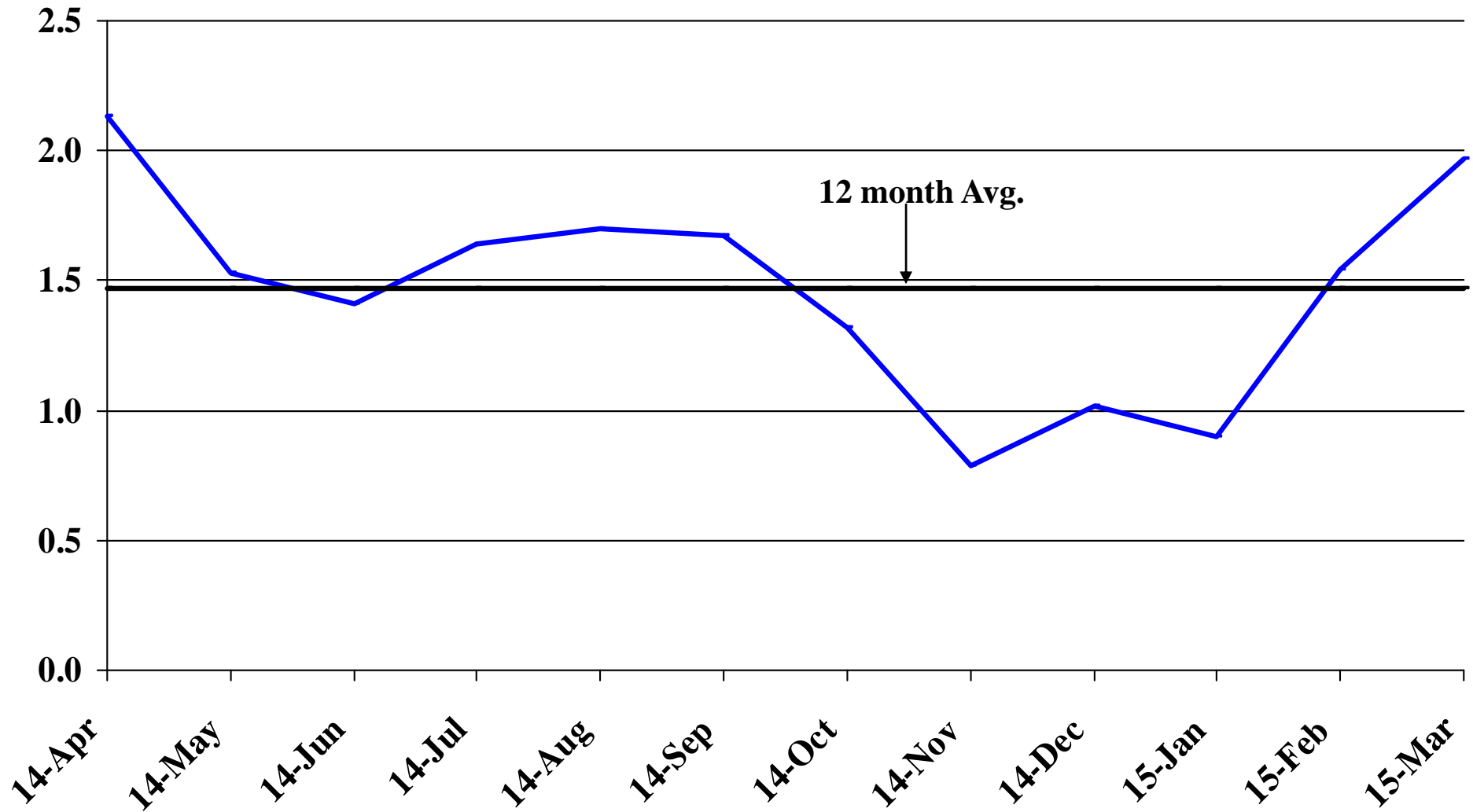
# Recent Trends in Government Employment

Percent Change

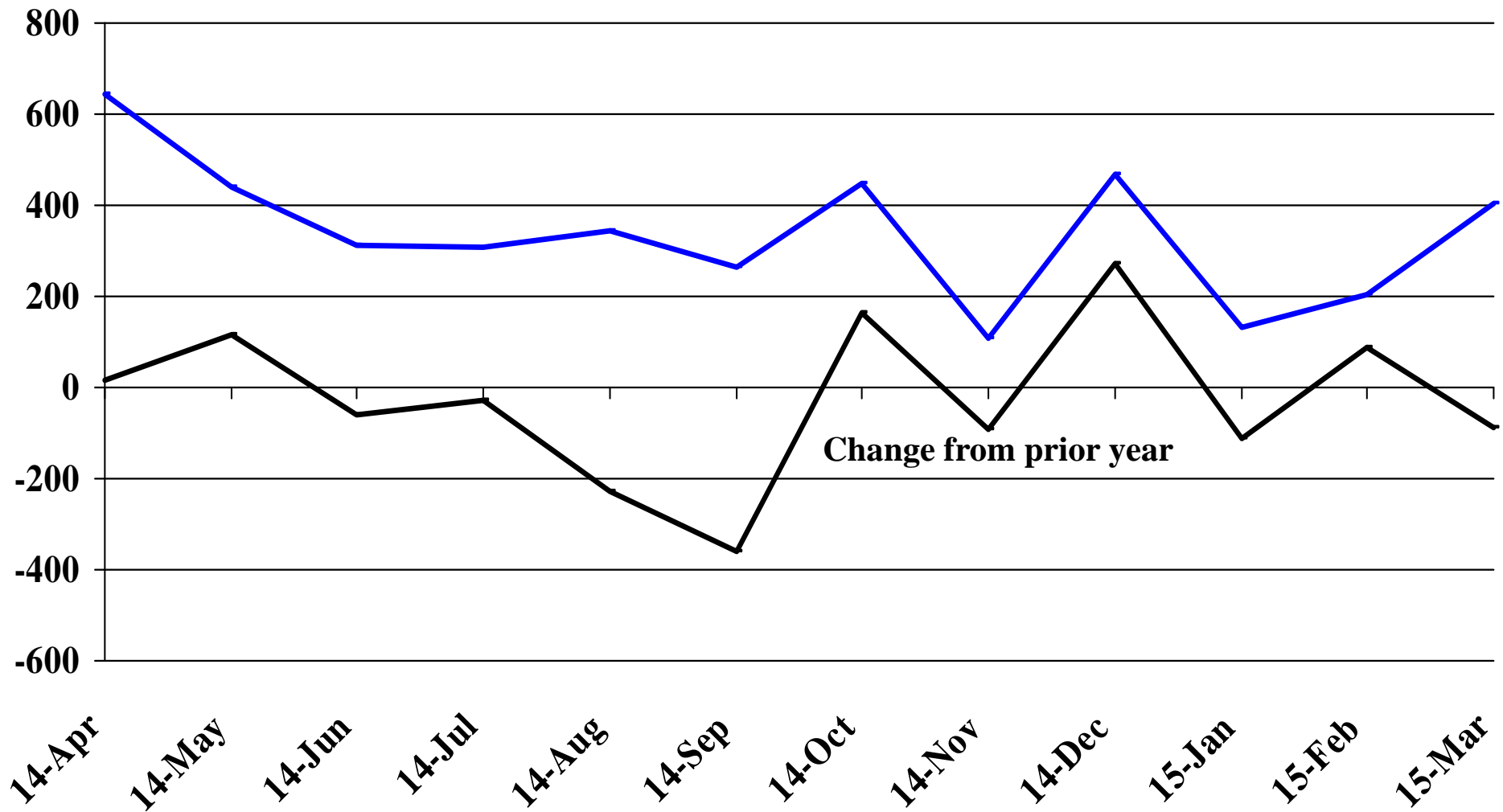


# Recent Trends in Nonfarm Employment (excluding Government Employment)

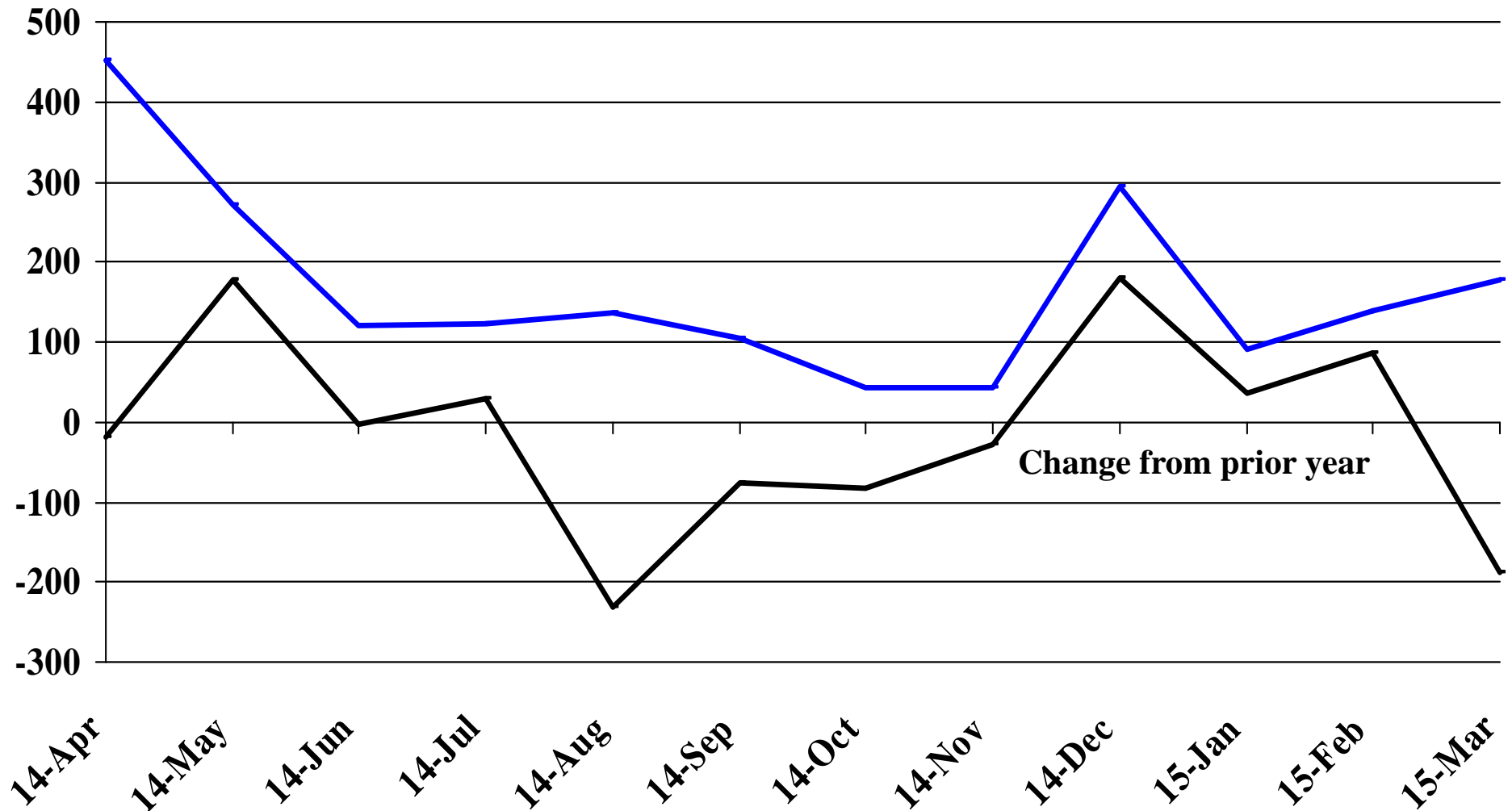
Percent Change



# Recent Trends in the Number of Units Authorized by Residential Building Permits for South Dakota

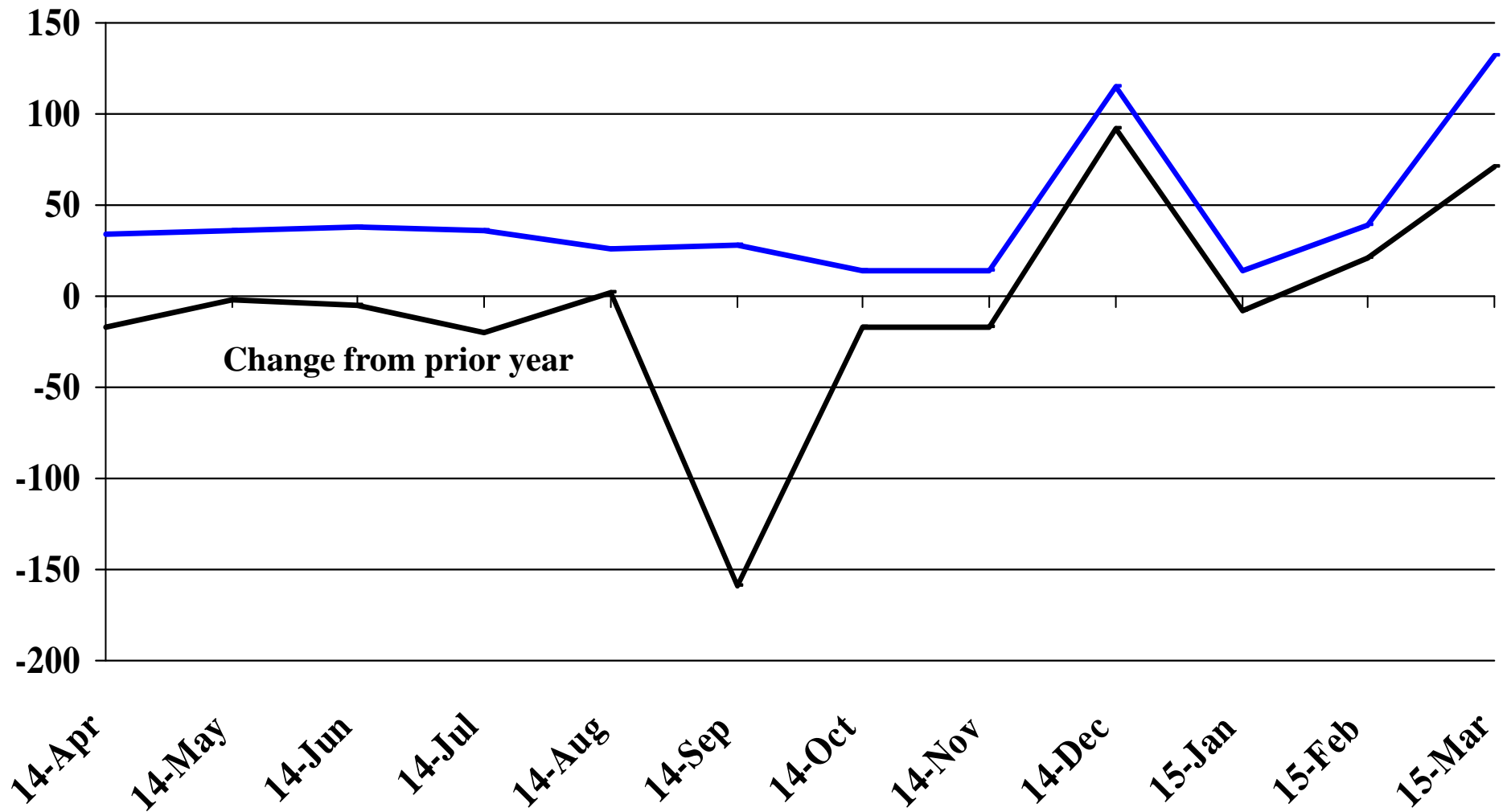


# Recent Trends in the Number of Residential Units Authorized by Building Permits for Minnehaha County



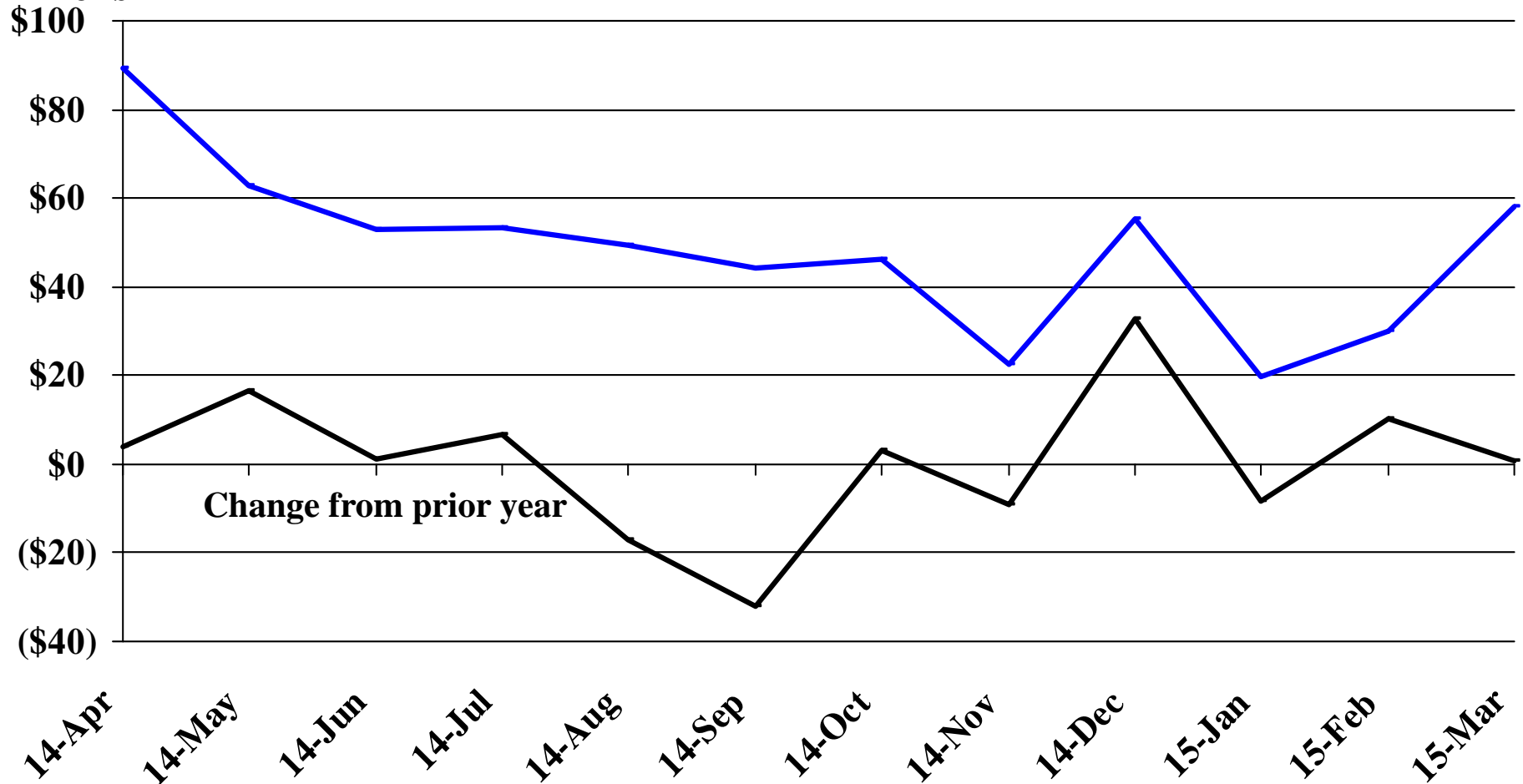


# Recent Trends in the Number of Residential Units Authorized by Building Permits for Pennington County



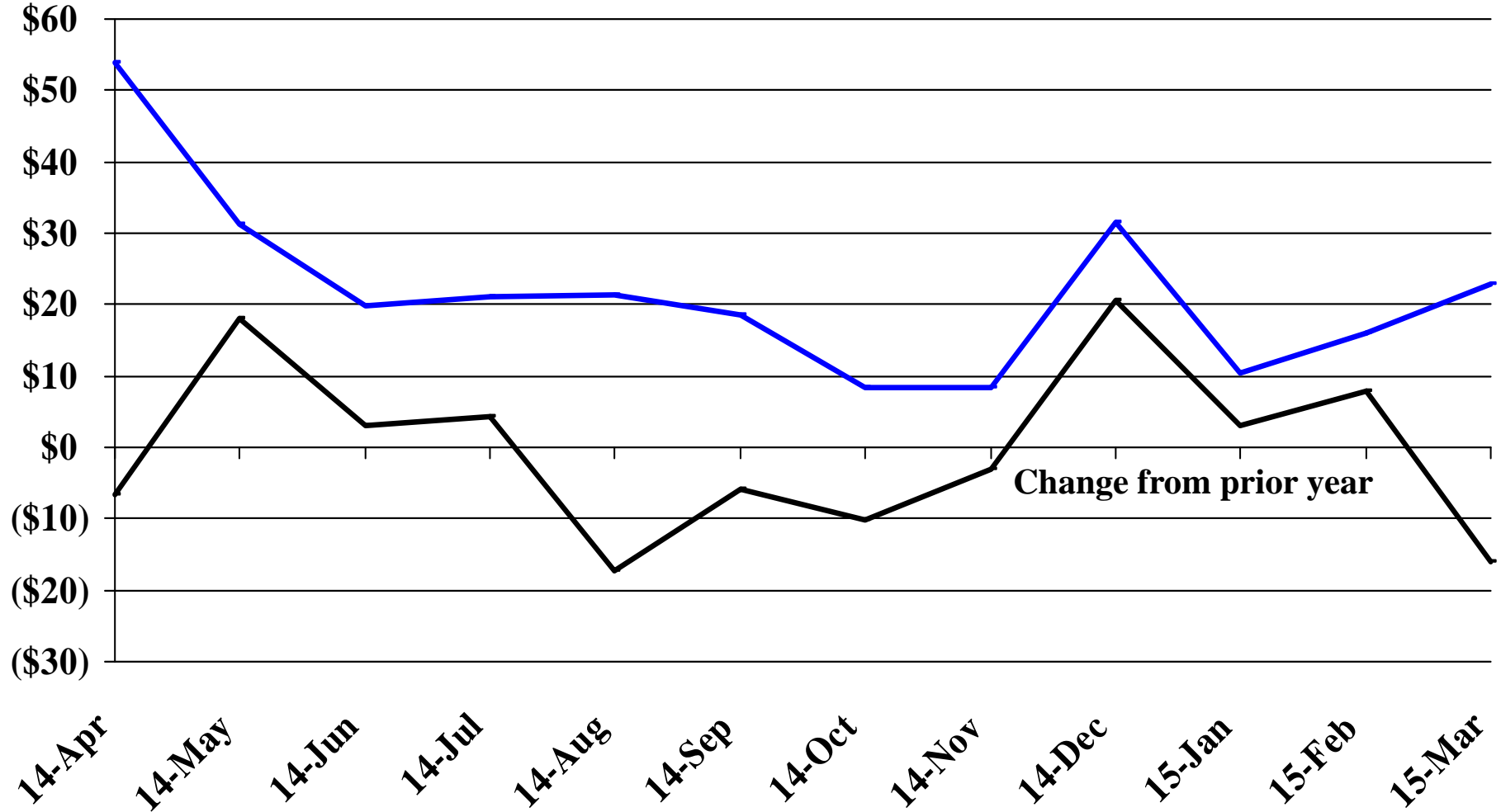
# Recent Trends in the Value of Residential Building Permits Issued for South Dakota

Millions



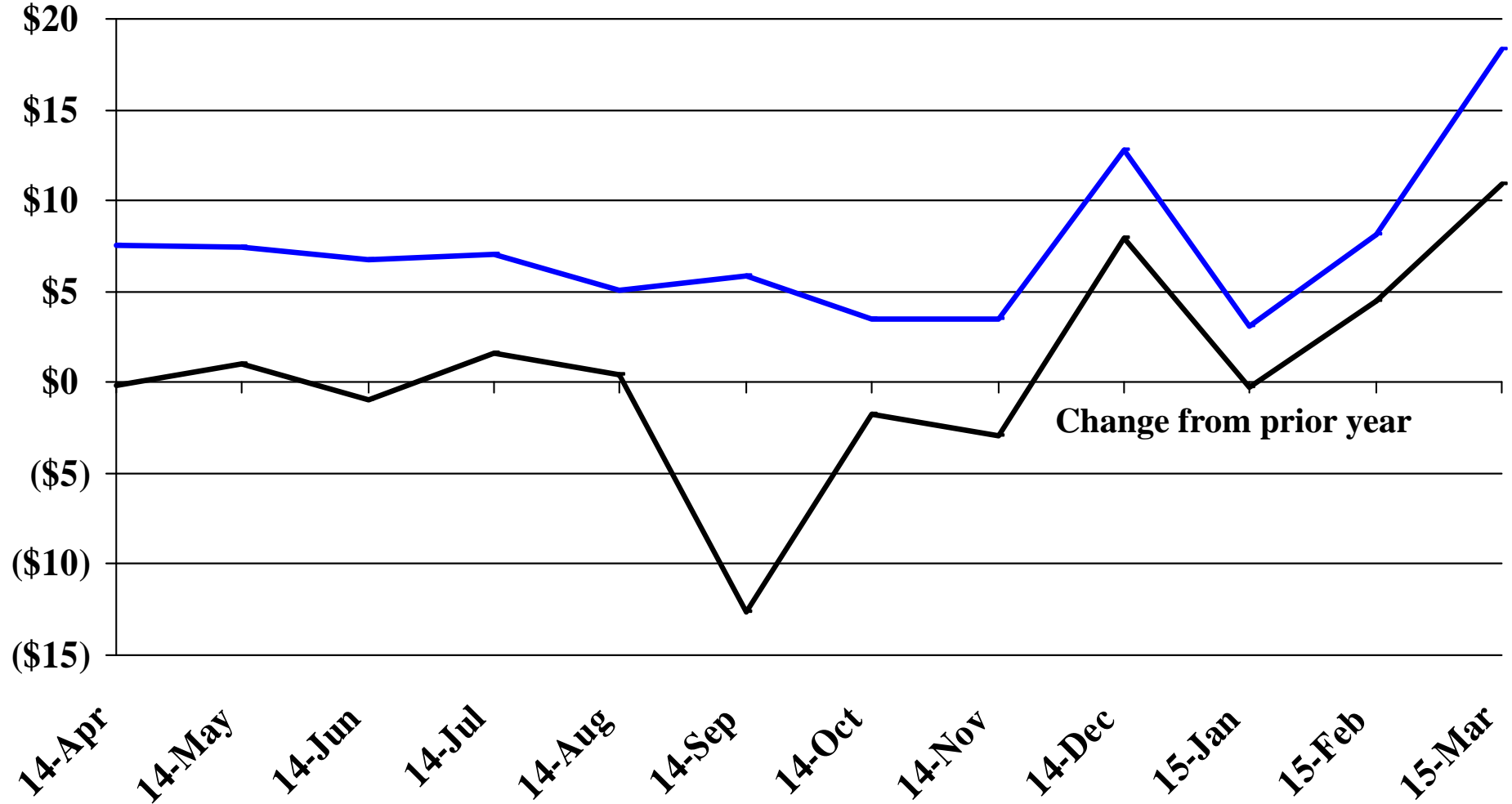
# Recent Trends in the Value of Residential Building Permits Issued for Minnehaha County

Millions

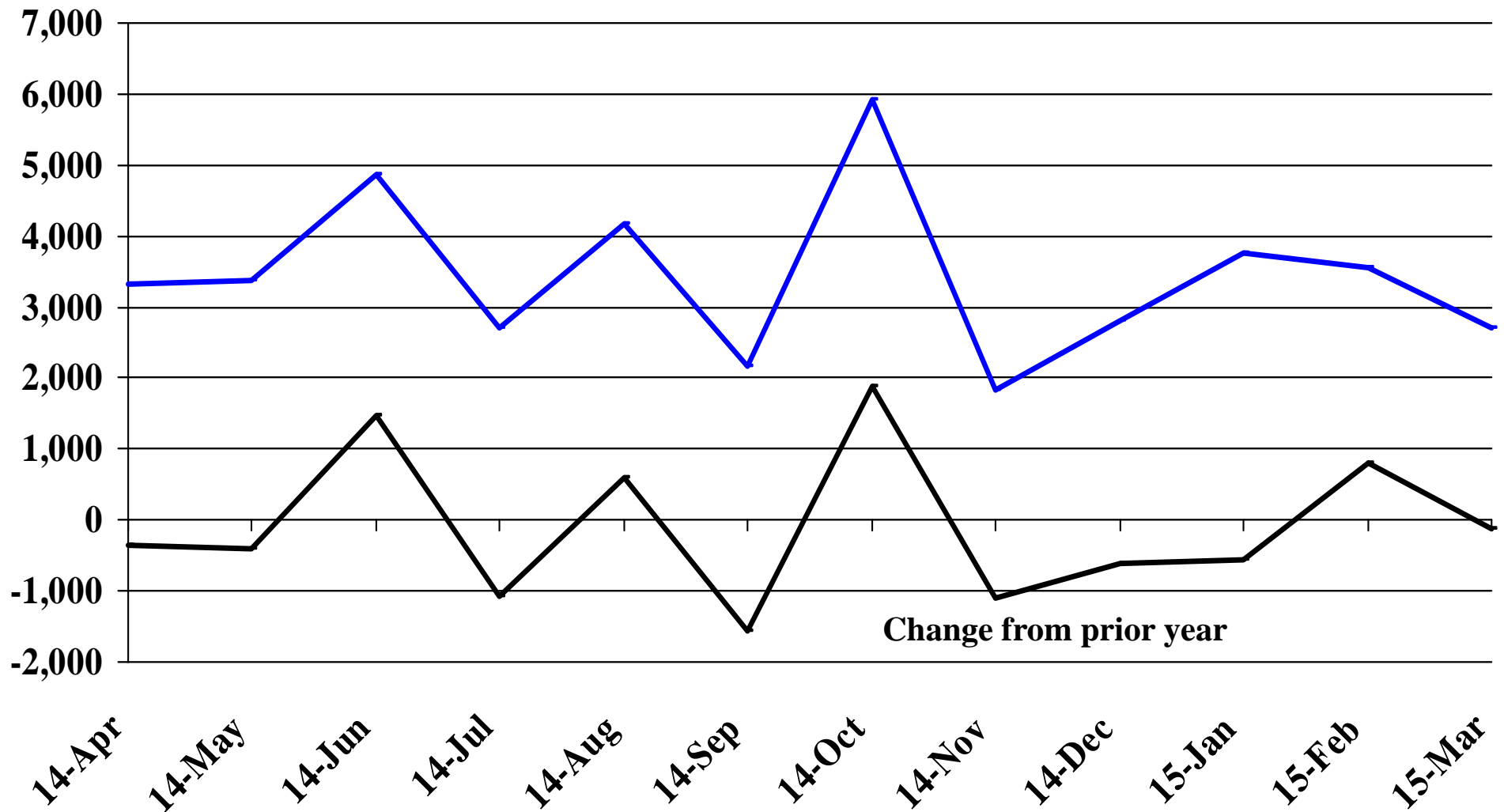


# Recent Trends in the Value of Residential Building Permits Issued for Pennington County

Millions

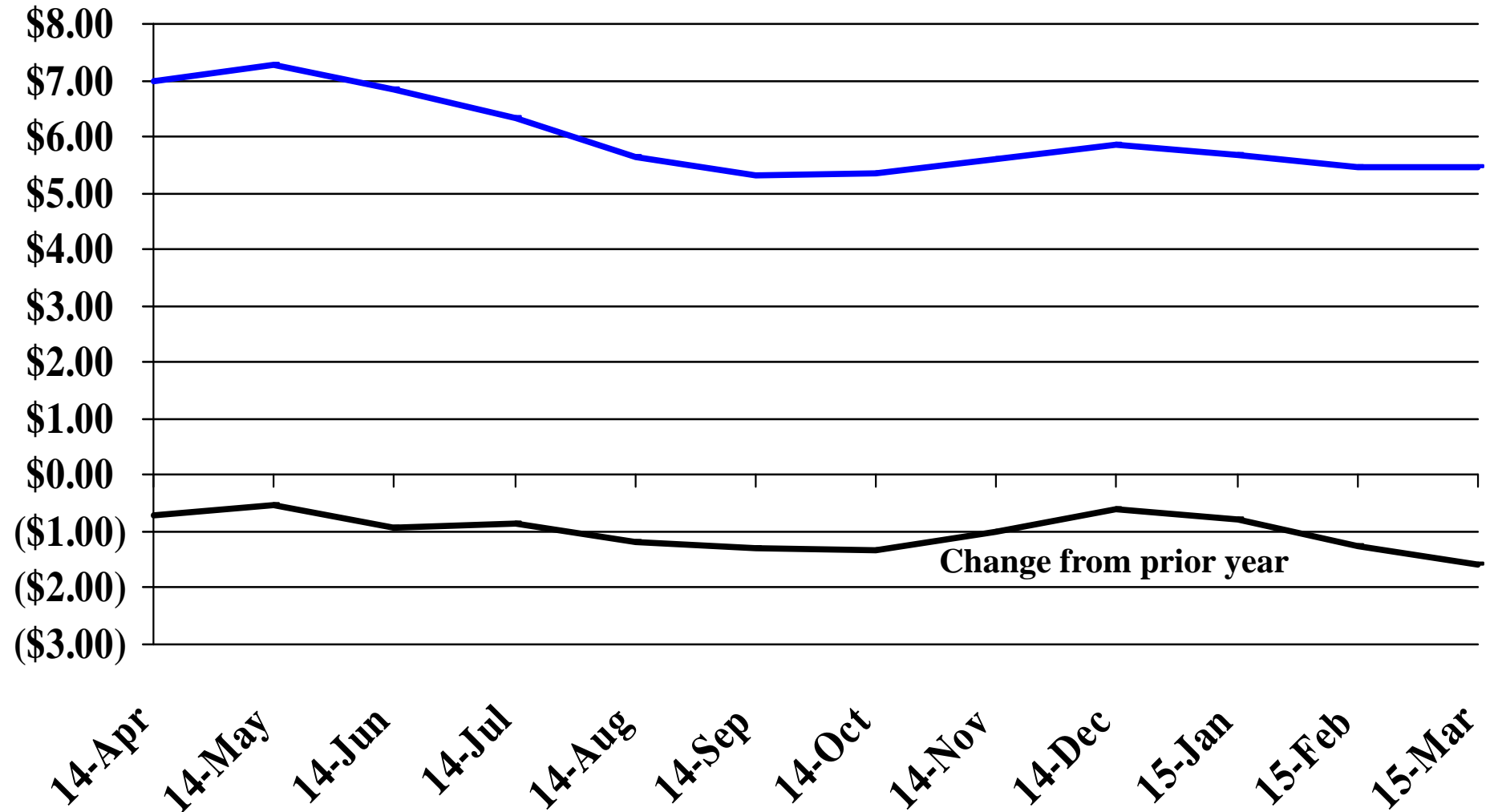


# Recent Trends in the Number of New Non-Commercial Vehicles Titled



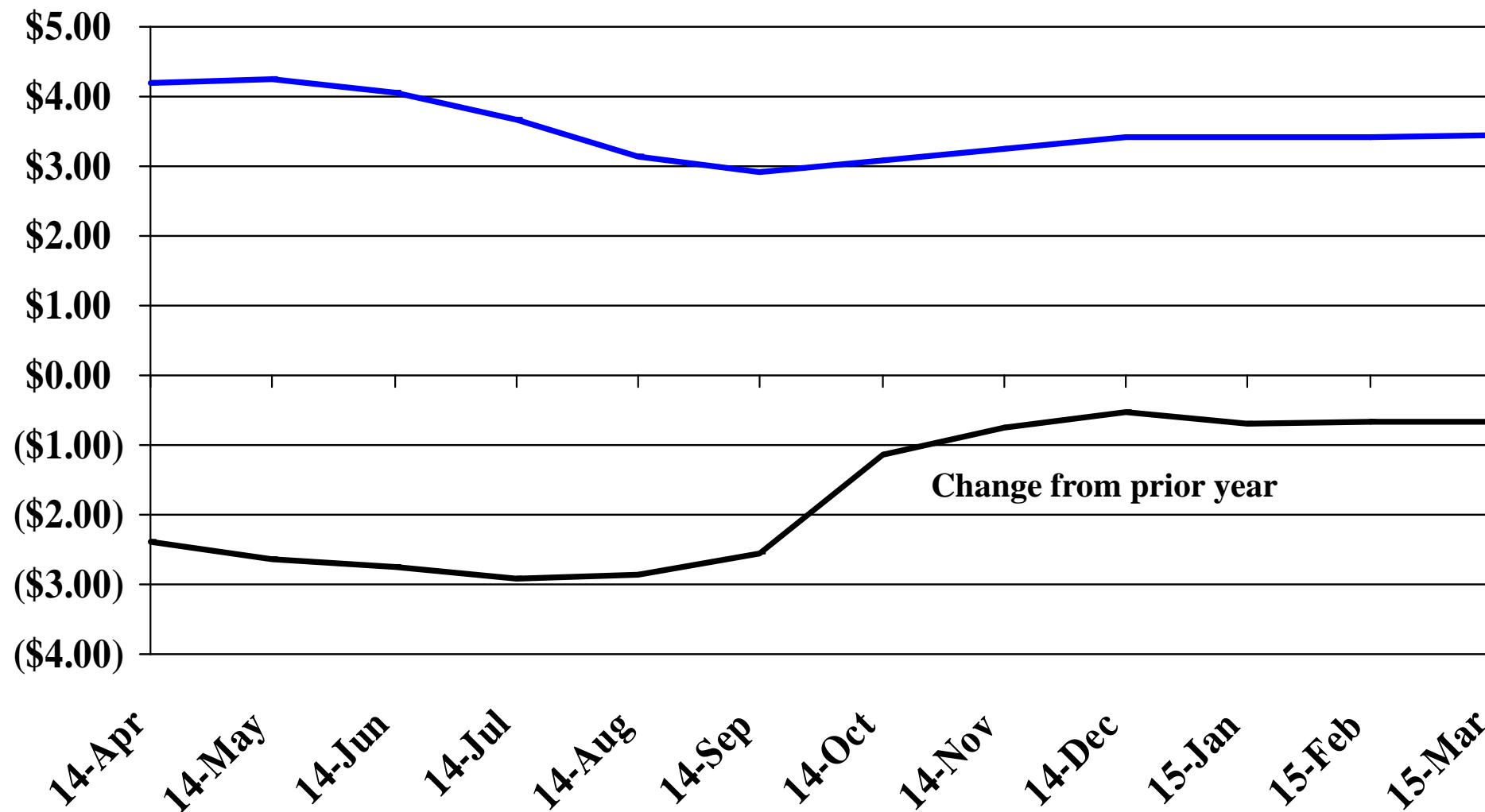
# Recent Trends in the Price of Wheat

\$'s Per Bushel



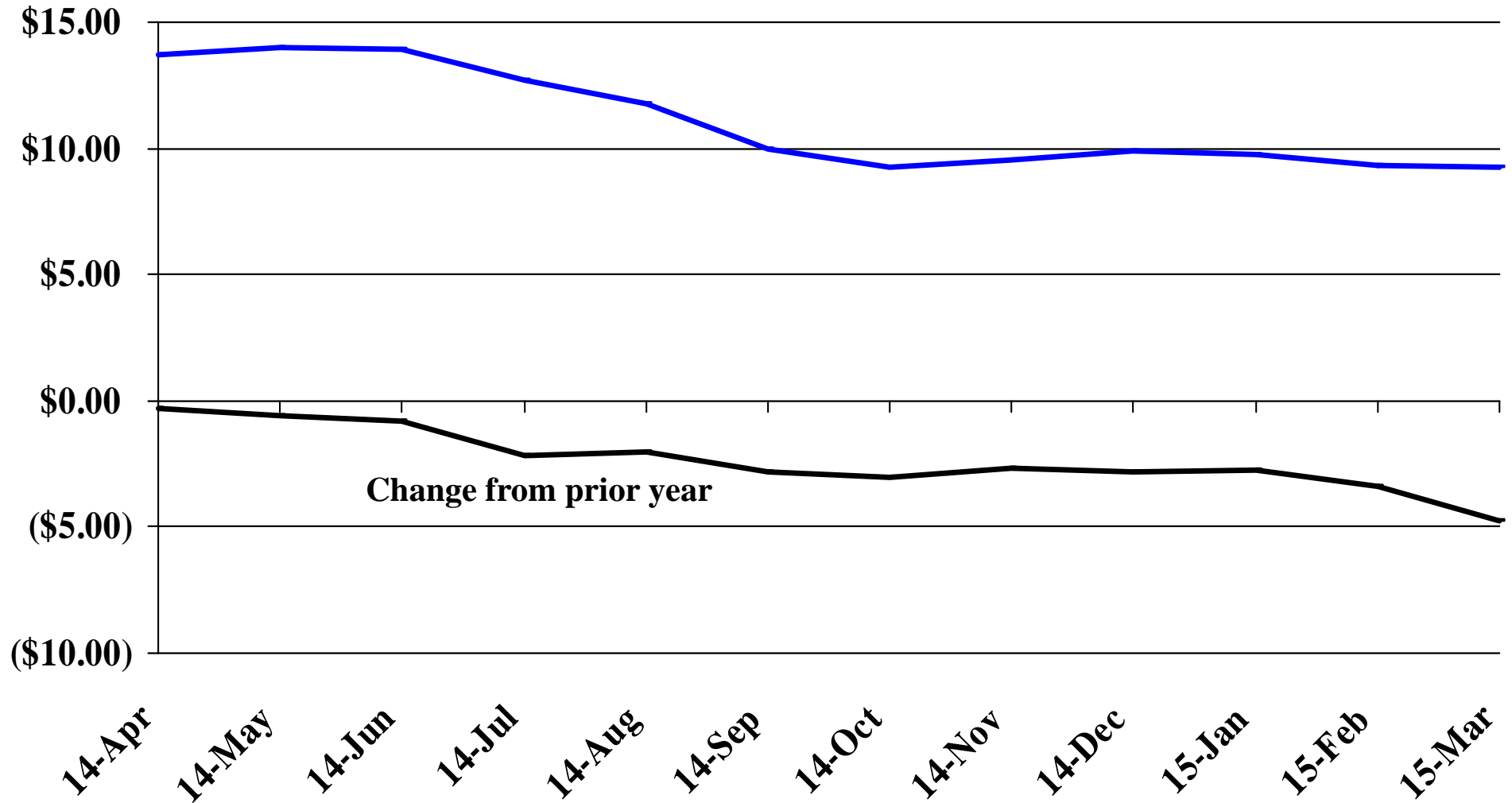
# Recent Trends in the Price of Corn

\$'s Per Bushel



# Recent Trends in the Price of Soybeans

\$'s Per Bushel





# Recent Trends in the Price of Hay

\$'s Per Ton

